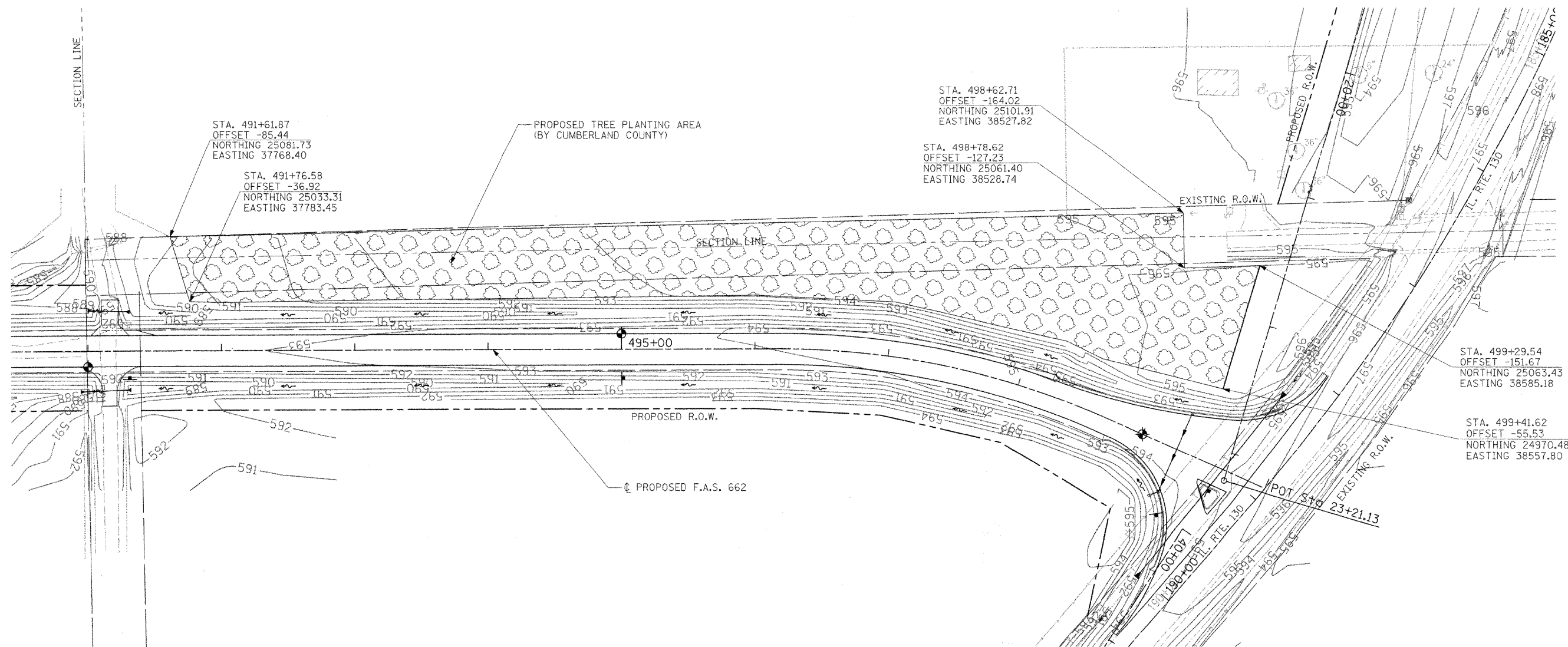


© Copyright Hanson Professional Services Inc. 2008
HANSON
 Hanson Professional Services Inc.



STA. 491+61.87
 OFFSET -85.44
 NORTHING 25081.73
 EASTING 37768.40

STA. 491+76.58
 OFFSET -36.92
 NORTHING 25033.31
 EASTING 37783.45

STA. 498+62.71
 OFFSET -164.02
 NORTHING 25101.91
 EASTING 38527.82

STA. 498+78.62
 OFFSET -127.23
 NORTHING 25061.40
 EASTING 38528.74

STA. 499+29.54
 OFFSET -151.67
 NORTHING 25063.43
 EASTING 38585.18

STA. 499+41.62
 OFFSET -55.53
 NORTHING 24970.48
 EASTING 38557.80



PLANT NATIVE MAST-PRODUCING TREE SPECIES. PLANT IN EQUAL PARTS AND IN RANDOM ORDER ON 15 FOOT CENTERS. TREE SPECIES TO BE PLANTED INCLUDE PIN OAK, BITTERNUT HICKORY, BLACK OAK, WHITE OAK, AND SHAGBARK HICKORY. IF COMERCIAALLY AVAILABLE. (WORK TO BE COMPLETED BY CUMBERLAND COUNTY.)

TYPE	QUANTITY (EA.)
PIN OAK	: 40
BITTERNUT HICKORY	: 40
BLACK OAK	: 40
WHITE OAK	: 40
SHAGBARK HICKORY	: 40
TOTAL	200

LAYOUT	MAN/DLP	10/10/07
DRAWN	DJP	10/10/07
REVIEWED	JMB	02/04/08

FILE NAME =	USER NAME = Pop00275	DESIGNED - JLB	REVISED -
Tr:\01\jobs\01s20218\VCADD\Road\Sheet\C-506	grddgn	DRAWN - DJP	REVISED -
PLOT SCALE = 40.0000" = 1"	CHECKED - JLB	REVISED -	REVISED -
PLOT DATE = 04\04\2008, 12:57 PM	DATE - 12/07/07	REVISED -	REVISED -

**STATE OF ILLINOIS
 DEPARTMENT OF TRANSPORTATION**

TREE REPLACEMENT PLAN

SCALE: SHEET NO. 1 OF 1 SHEETS

F.A.S. RTE.	SECTION	COUNTY	TOTAL SHEETS	SHEET NO.
662	00-00061-00-BR	CUMBERLAND	85	23
CONTRACT NO. 95552				
FED. ROAD DIST. NO. [ILLINOIS] FED. AID PROJECT				