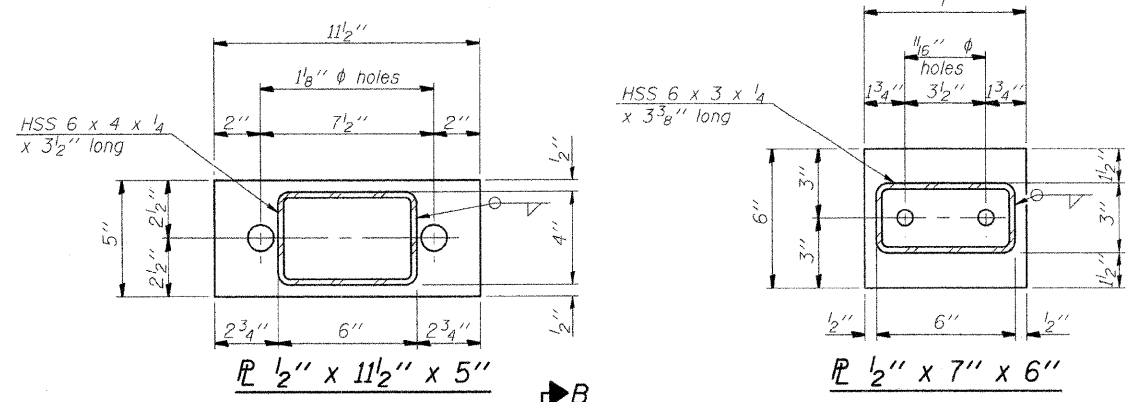
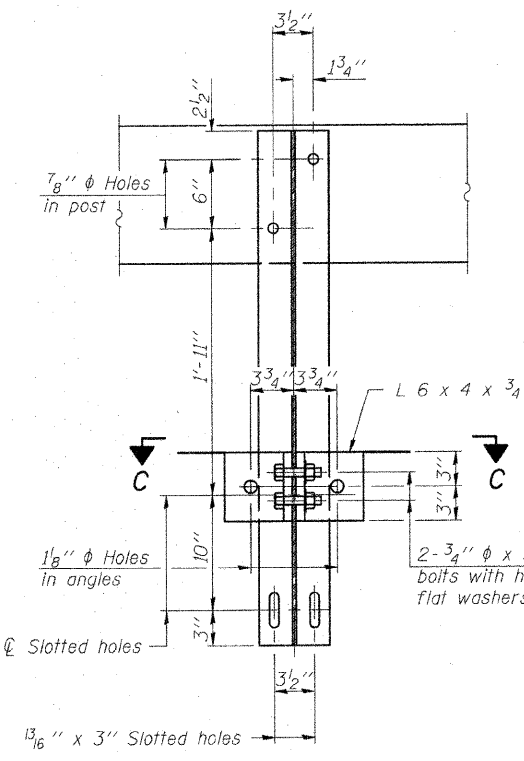


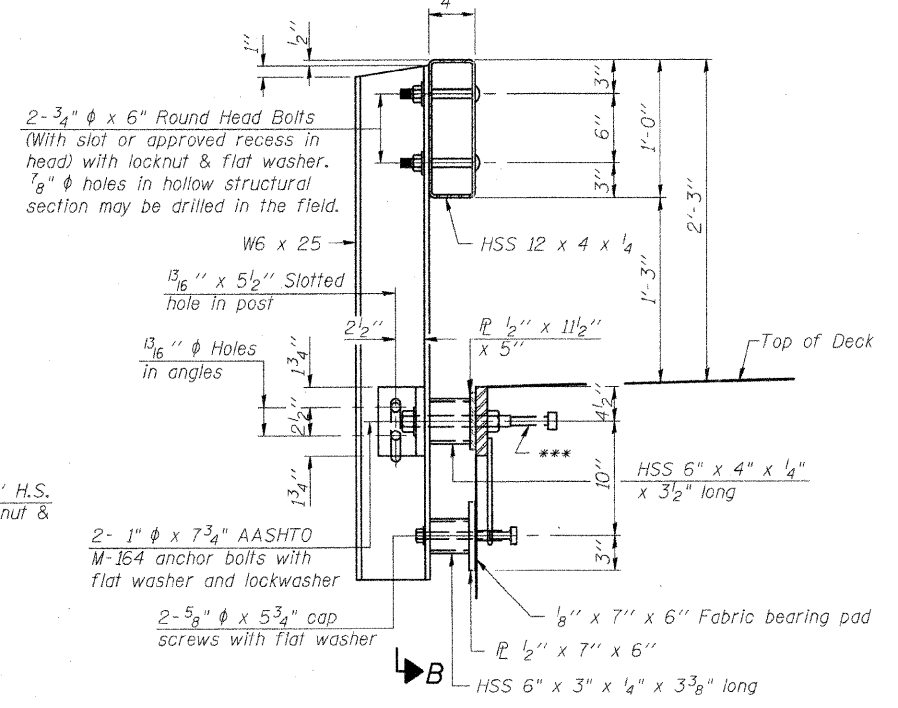
**VIEW A-A
ROUND HEAD BOLT**



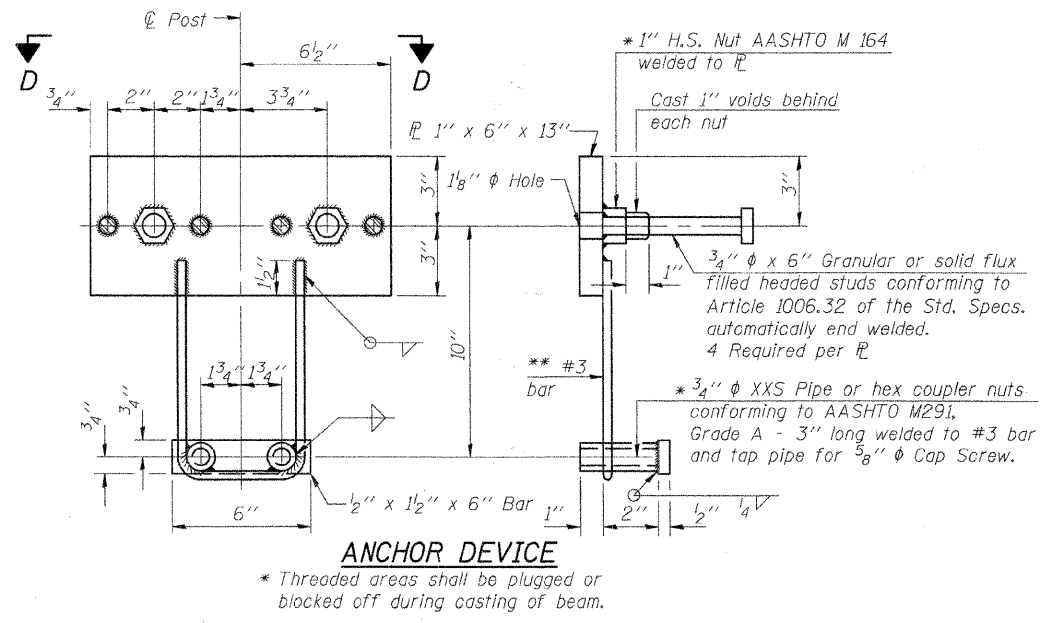
For Rail Post Spacing. See Partial Plan Sheet B of 26.



SECTION B-B

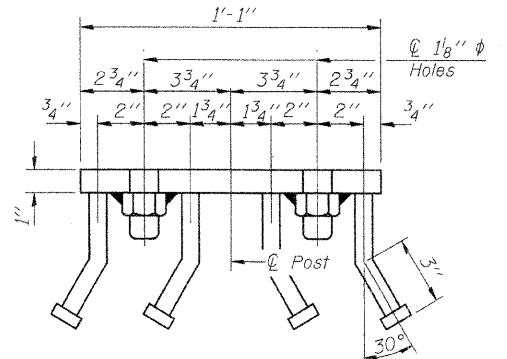


SECTION AT RAILING POST

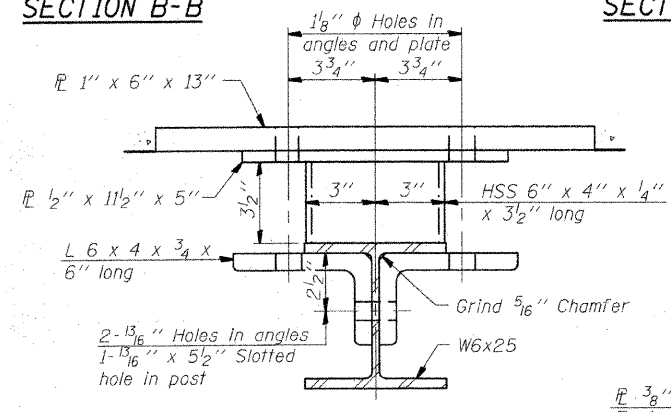


ANCHOR DEVICE

Notes:
 All field drilled holes shall be coated with an approved zinc rich paint before erection.
 For multi-span bridges, sufficient 1/4 inch x 6 inch x 1-2 inch galvanized steel shims shall be provided to align rail between adjacent spans. Cost included with Steel Railing, Type S-1.
 All steel rail elements shall be galvanized according to Article 509.05 of the Standard Specifications.
 *** The studs of the anchor devices shall be placed below the top reinforcement bars and the outermost longitudinal reinforcement bar shall be placed directly above the studs of the rail post anchor device.

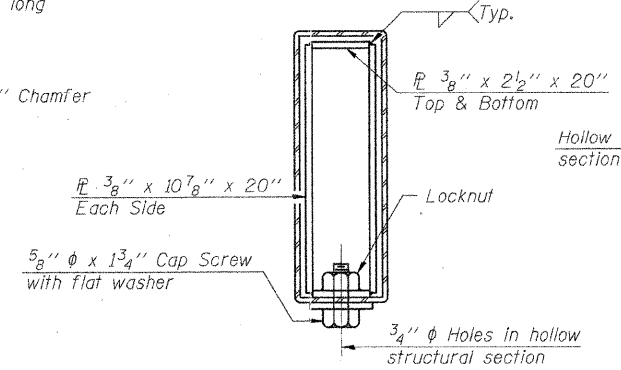


VIEW D-D

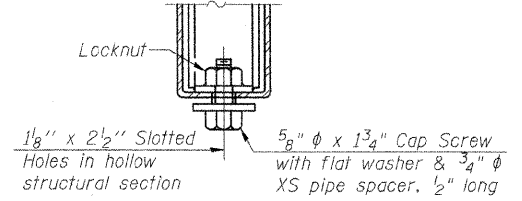


SECTION C-C

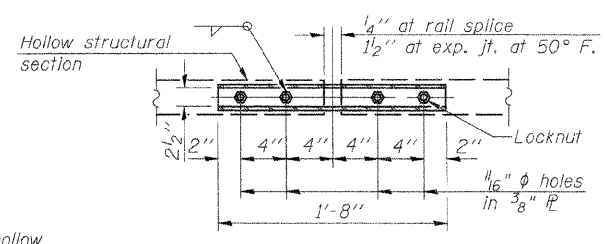
** Whenever the lower insert assemblies interfere with reinforcement locations, the #3 bars shall be cut and adjusted in order to allow raising or lowering of the lower inserts. Maximum adjustment not to exceed 1/2 inch.



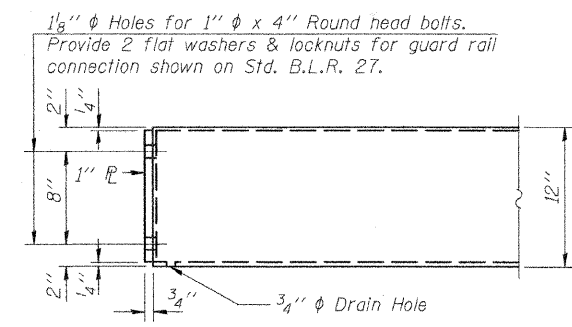
SECTIONS AT RAIL SPLICE



RAIL SPLICE CONNECTION AT EXPANSION JT.



PLAN-BOTT. SPLICE TYPICAL



END OF RAIL DETAILS

BILL OF MATERIAL

Item	Unit	Quantity
Steel Railing, Type S-1	Foot	896

STEEL RAILING, TYPE S-1
 F.A.S. 662 (TR 61) OVER EMBARRAS RIVER
 CUMBERLAND COUNTY
 SECTION 01-00061-00-BR
 STA. 470+75.00
 STRUCTURE NUMBER 018-3191
 PROFESSIONAL DESIGN FIRM LICENSE #184-001084
 © Copyright Hanson Professional Services Inc. 2008

HANSON
 Hanson Professional Services Inc.

JOB NO. 01S2021B
 DATE 02/04/08

04/01/2008 03:56 PM
 I:\Jobs\01S2021\Records\Struct\Steel\River_Bridge_Plans.dgn
 LAYOUT 11/20/07
 DRAWN DAP 12/28/07
 REVIEWED JMM 02/04/08