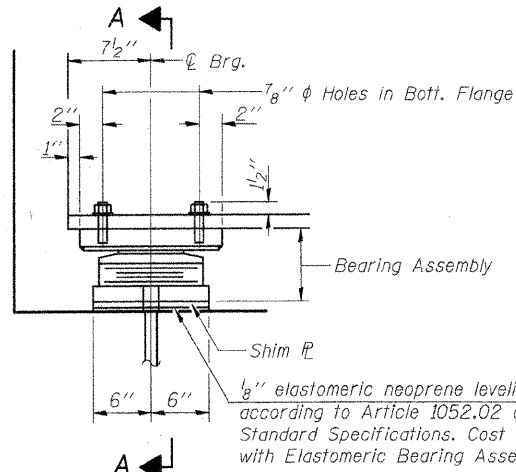
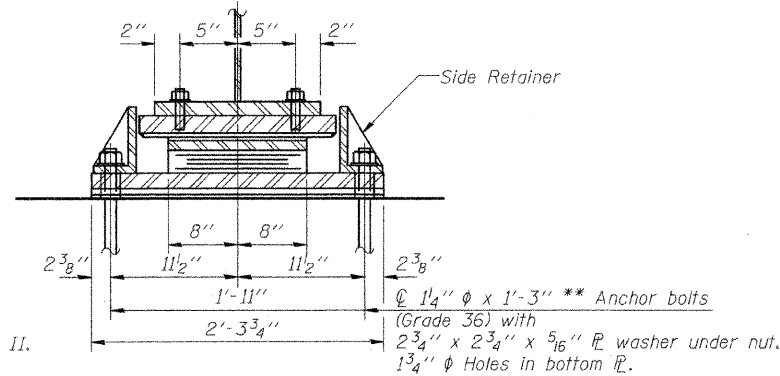


\*\* Lengths show are the required total lengths for cast-in-place headed anchor bolts. The required total length for the sealed capsule alternative anchor bolt shall be according to the manufacturer's recommendations.

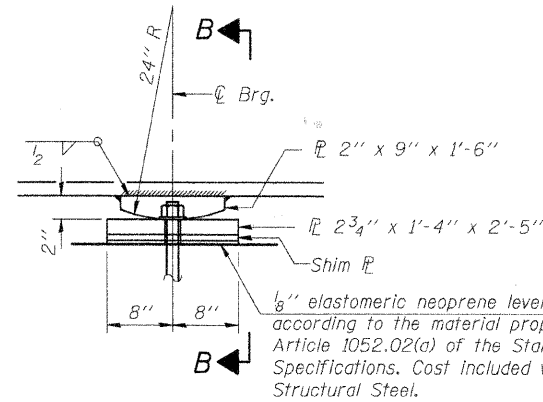


**ELEVATION AT ABUT.**

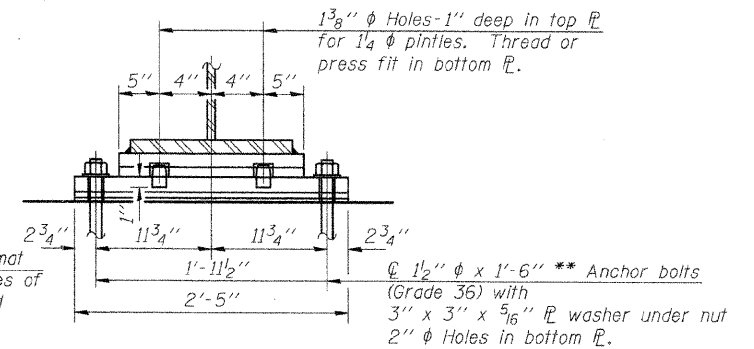
**TYPE II ELASTOMERIC EXP. BRG.**



**SECTION A-A**

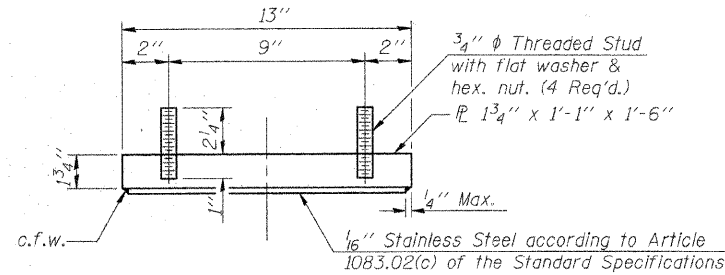


**ELEVATION AT PIER**

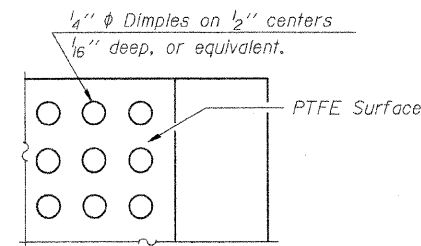


**SECTION B-B**

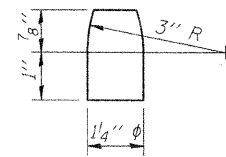
**FIXED BEARING**



**TOP BEARING ASSEMBLY**



**PLAN-PTFE SURFACE**



**PINTLE**

Notes:  
Anchor bolts shall be ASTM F1554 all-thread (or an Engineer-approved alternate material) of the grade(s) and diameter(s) specified. ASTM A307 Grade C anchor bolts may be used in lieu of ASTM F1554 Grade 36 (Fy=36ksi). The corresponding specified grade of AASHTO M314 anchor bolts may be used in lieu of ASTM F1554.

Anchor bolts at fixed bearings may be either cast in place or installed in holes drilled after the supported member is in place.

Anchor bolts for Type II bearings shall be placed in holes drilled through the bottom bearing plate after members are in place. Side retainers shall be placed after bolts are installed.

Drilled and set anchor bolts shall be installed according to Article 521.06 of the Standard Specifications.

Side retainers and other steel members required for the bearing assembly shall be included in the cost of Elastomeric Bearing Assembly, Type II.

The 1/8 inch PTFE sheet shall be bonded directly to the top steel plate with a two-component, medium viscosity epoxy resin, conforming to the requirements of the Federal Specification MMM-A-134, Type I. The bond agent shall be applied on the full area of the contact surfaces.

Bonding of 1/8 inch PTFE sheet during vulcanizing process will be permitted provided the process and method of adjusting assembly height is approved by the Engineer.

Two 1/8 inch adjusting shims shall be provided for each bearing in addition to all other plates or shims and placed as shown on bearing details.

**BILL OF MATERIAL**

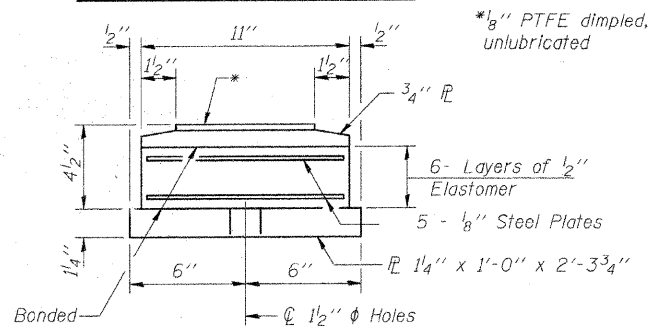
Item	Unit	Total
Elastomeric Bearing Assembly, Type II	Each	8
Steel Bearing Assembly	Each	8
Anchor Bolts, 1 1/4 inch diameter	Each	16
Anchor Bolts, 1 1/2 inch diameter	Each	16

**ELASTOMERIC BEARING ASSEMBLY, TYPE II**  
 F.A.S. 662 (TR 6D) OVER EMBARRAS RIVER  
 CUMBERLAND COUNTY  
 SECTION 01-00061-00-BR  
 STA. 470+75.00  
 STRUCTURE NUMBER 018-3191  
 PROFESSIONAL DESIGN FIRM LICENSE #184-001084

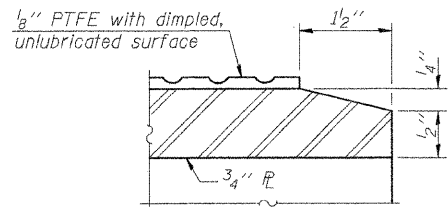
© Copyright Hanson Professional Services Inc. 2008

**HANSON**  
 Hanson Professional Services Inc.

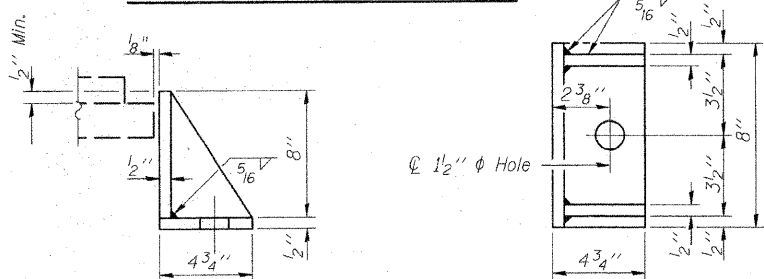
JOB NO. 01S2021B  
 DATE 02/04/08



**BOTTOM BEARING ASSEMBLY**

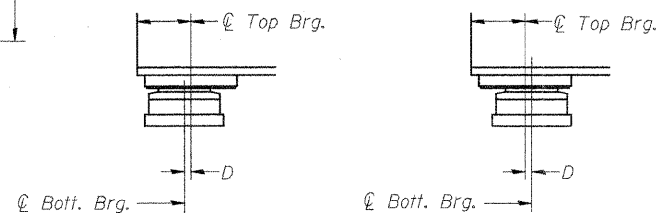


**SECTION THRU PTFE**



**SIDE RETAINER**

Equivalent rolled angle with stiffeners will be allowed in lieu of welded plates.



**BELOW 50°F.** (Move bott. brg. away from fixed brg.)  
**ABOVE 50°F.** (Move bott. brg. toward fixed brg.)

**SETTING ANCHOR BOLTS AT EXP. BRG.**

D=1/8 inch per each 100 feet of expansion for every 15 degrees temp. change from the normal temp. of 50 degrees Fahrenheit.