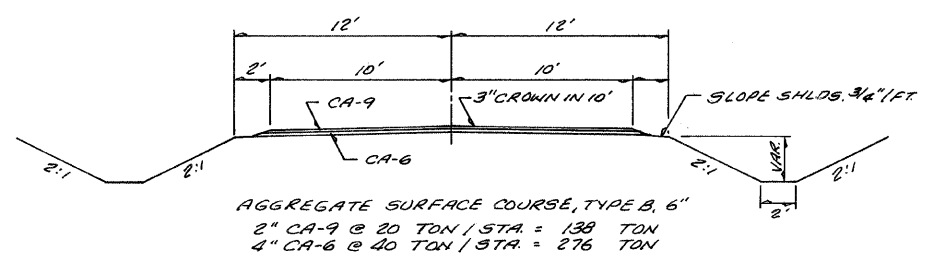
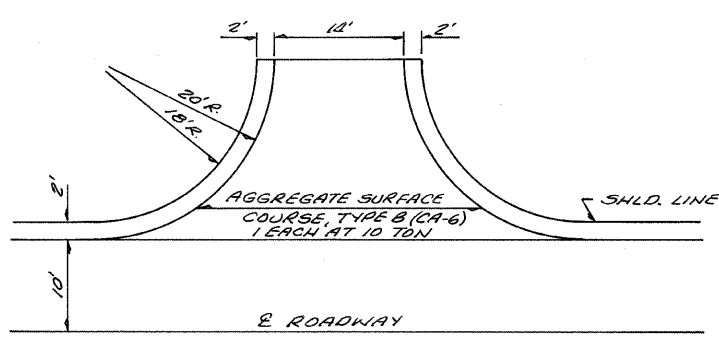
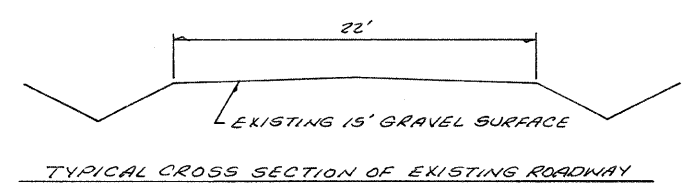


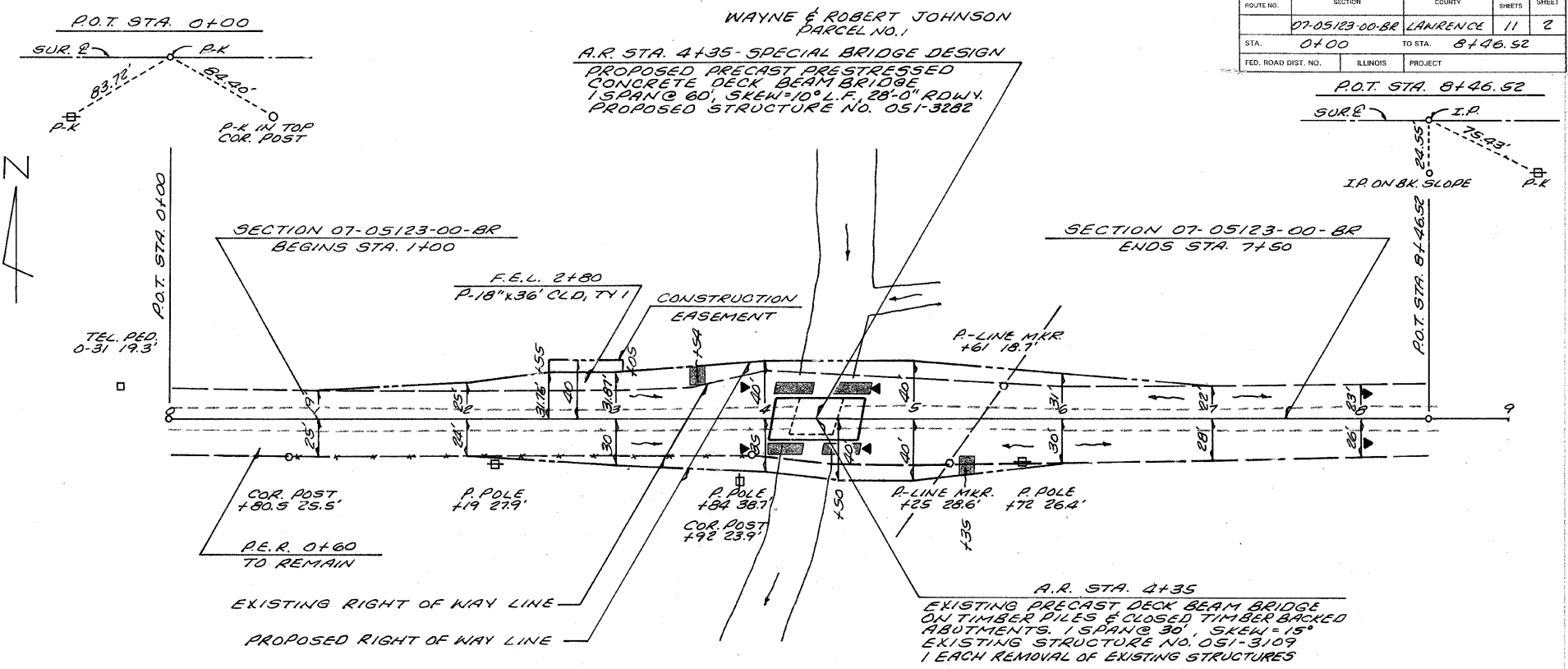
F.S. ROUTE NO.	SECTION	COUNTY	TOTAL SHEETS	SHEET
07-05123-00-BR	LANRENCE	11	2	
STA. 0+00	TO STA. 8+46.52	PROJECT		
FED. ROAD DIST. NO.	ILLINOIS	PROJECT		



TYPICAL CROSS SECTION OF PROPOSED IMPROVEMENT



DETAIL OF FIELD ENTRANCE



TEL. PED. 0-31 19.3'

COR. POST. +80.5 25.5'
P.E.R. 0+60 TO REMAIN

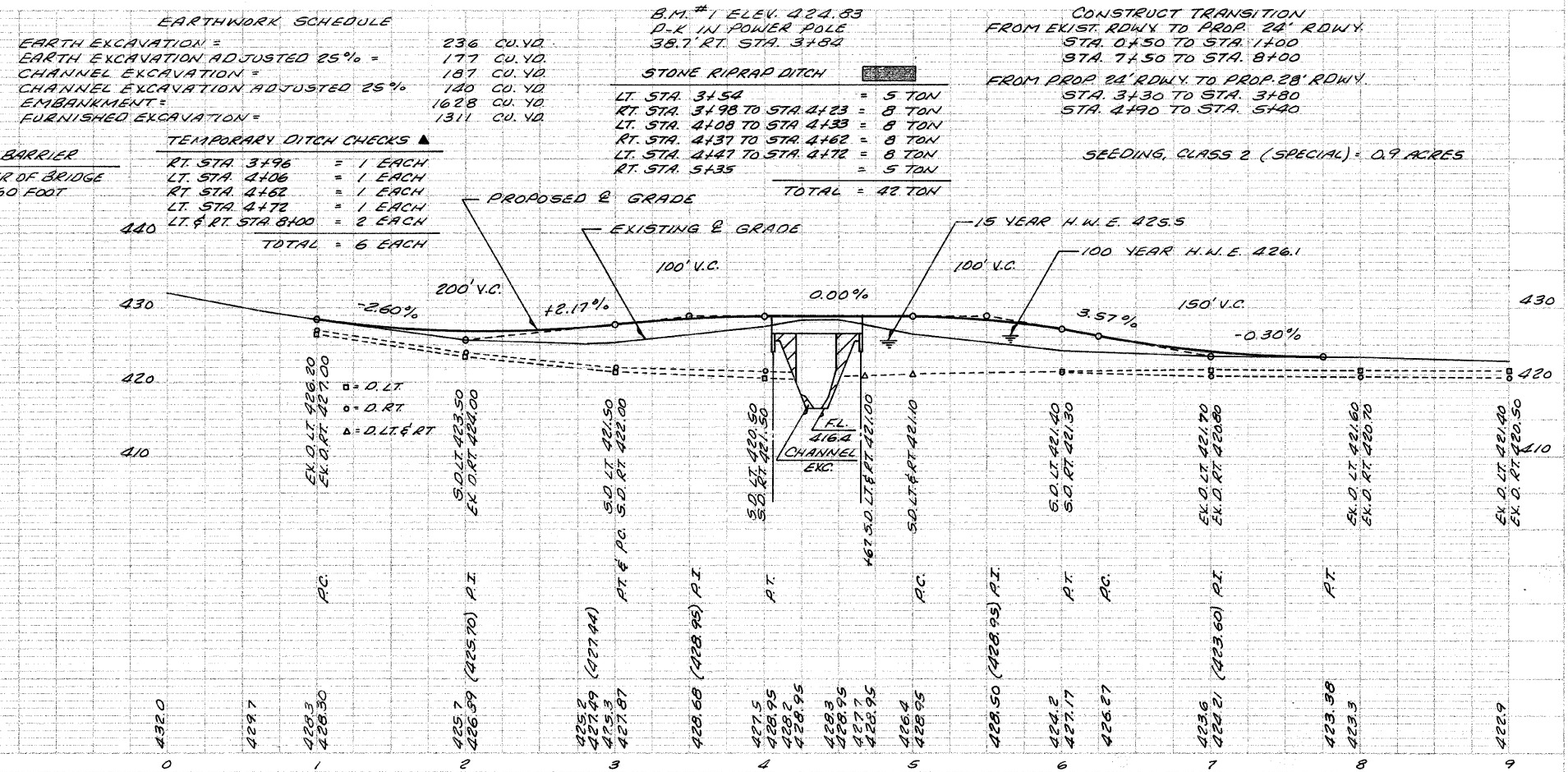
EXISTING RIGHT OF WAY LINE
PROPOSED RIGHT OF WAY LINE

WAYNE & ROBERT JOHNSON
PARCEL NO. 1
A.R. STA. 4+35- SPECIAL BRIDGE DESIGN
PROPOSED PRECAST PRESTRESSED
CONCRETE DECK BEAM BRIDGE
1 SPAN @ 60', SKEW=10° L.F. 28'-0\"/>

SECTION 07-05123-00-BR
ENDS STA. 7+50

A.R. STA. 4+35
EXISTING PRECAST DECK BEAM BRIDGE
ON TIMBER PILES & CLOSED TIMBER BACKED
ABUTMENTS. 1 SPAN @ 30', SKEW=15°
EXISTING STRUCTURE NO. 051-3109
1 EACH REMOVAL OF EXISTING STRUCTURES

RUSSEL & MURDITH SIMMS
PARCEL NO. 2



PERIMETER EROSION BARRIER
15 FOOT @ EACH CORNER OF BRIDGE
ON CHANNEL SLOPE = 60 FOOT

TEMPORARY DITCH CHECKS
RT. STA. 3+96 = 1 EACH
LT. STA. 4+06 = 1 EACH
RT. STA. 4+62 = 1 EACH
LT. STA. 4+72 = 1 EACH
LT. & RT. STA. 8+00 = 2 EACH
TOTAL = 6 EACH

B.M. #1 ELEV. 424.83
D-K IN POWER POLE
38.7' RT. STA. 3+84

STONE RIPRAP DITCH
LT. STA. 3+54 = 5 TON
RT. STA. 3+98 TO STA. 4+23 = 8 TON
LT. STA. 4+08 TO STA. 4+33 = 8 TON
RT. STA. 4+37 TO STA. 4+62 = 8 TON
LT. STA. 4+47 TO STA. 4+72 = 8 TON
RT. STA. 5+35 = 5 TON
TOTAL = 42 TON

CONSTRUCT TRANSITION
FROM EXIST. RDWY TO PROP. 28' RDWY
STA. 0+50 TO STA. 1+00
STA. 7+50 TO STA. 8+00
FROM PROP. 24' RDWY TO PROP. 28' RDWY
STA. 3+30 TO STA. 3+80
STA. 4+90 TO STA. 5+40

SEEDING, CLASS 2 (SPECIAL) = 0.9 ACRES

UTILITIES
ELECTRIC: NORRIS ELECTRIC COOP
8543 N. STATE HWY. 130
NEWTON, IL 62448
618-793-8765
TELEPHONE: VERIZON
225 E. CHESTNUT ST.
OLNEY, IL 62450
618-395-6189

PLAN
DATE: 10/15/10
DRAWN BY: J. H. HARRIS
CHECKED BY: J. H. HARRIS
SCALE: AS SHOWN
NOTE: SEE SHEET 07-05123-00-BR FOR
GENERAL NOTES AND SPECIFICATIONS
NO. 1

PLAN
DATE: 10/15/10
DRAWN BY: J. H. HARRIS
CHECKED BY: J. H. HARRIS
SCALE: AS SHOWN
NOTE: SEE SHEET 07-05123-00-BR FOR
GENERAL NOTES AND SPECIFICATIONS
NO. 1