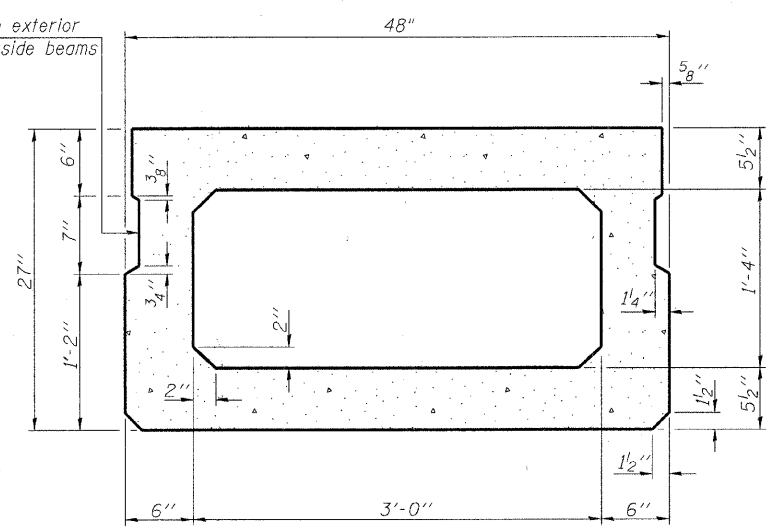
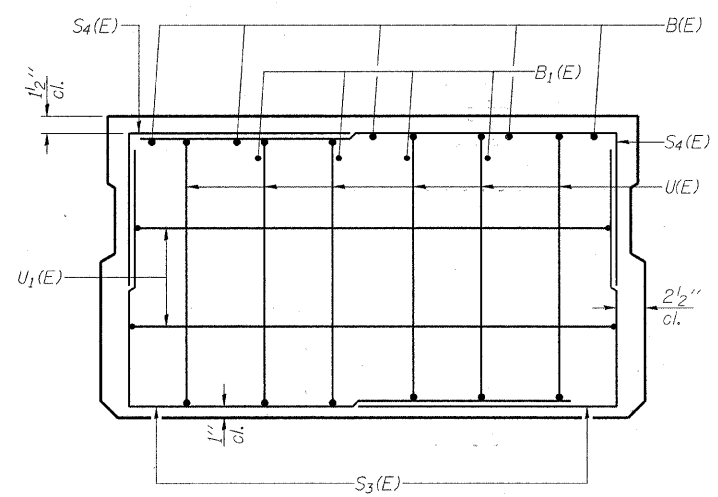


SECTION C-C

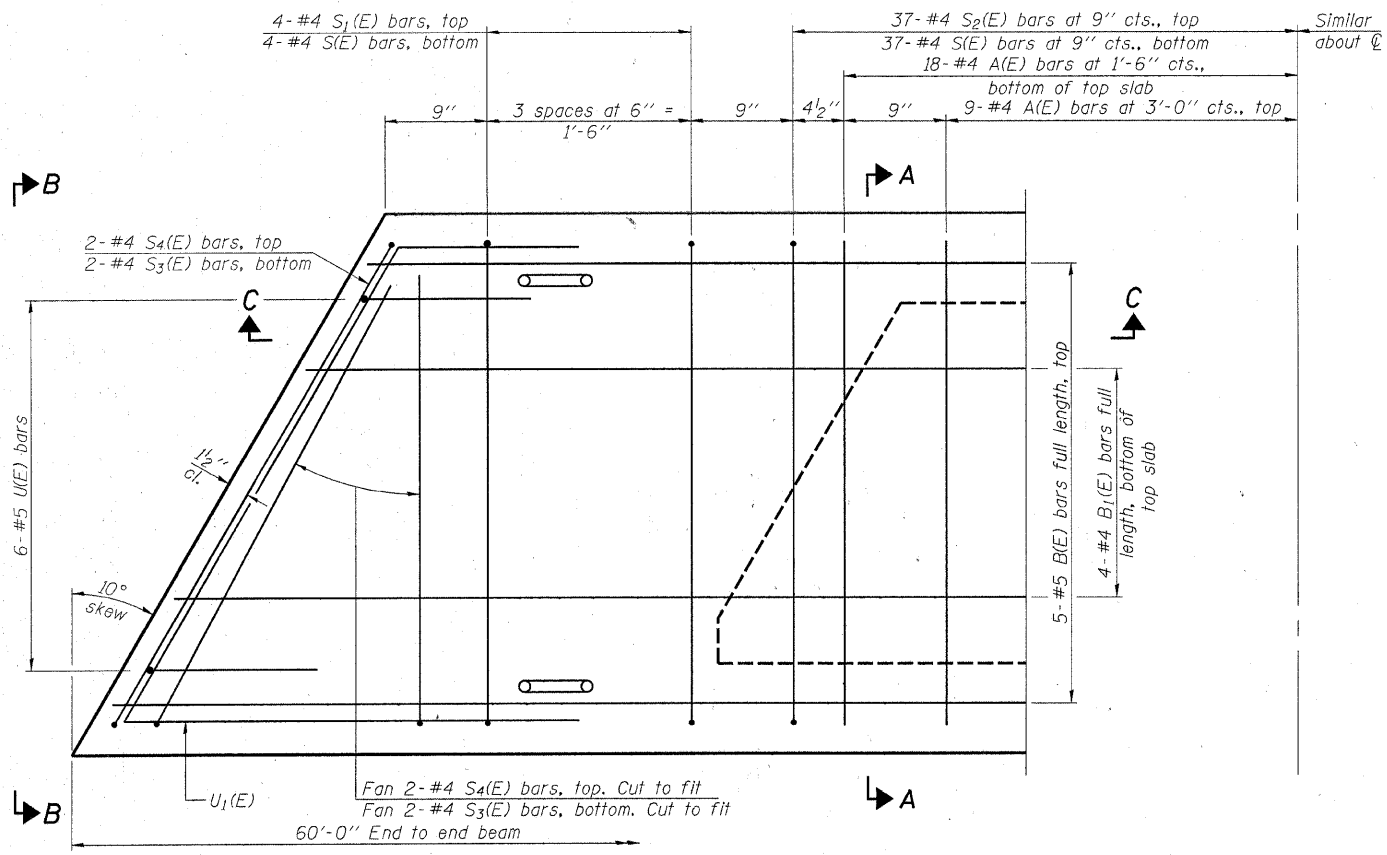
Omit key on exterior face of outside beams



SECTION A-A
(Showing dimensions)

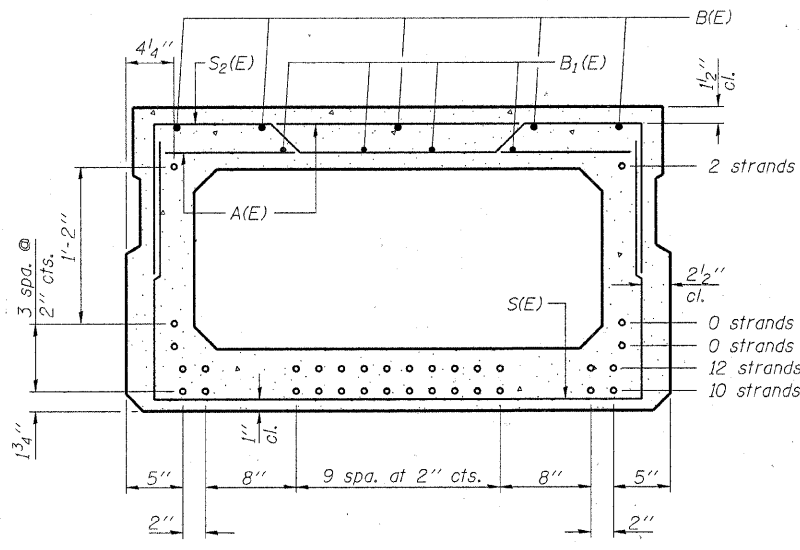


VIEW B-B



PLAN VIEW

Note: Spacing of S(E) and S2(E) bars may be adjusted up to 4" in the immediate area of the transverse tie diaphragms to miss the block outs for the transverse ties.



SECTION A-A
(Showing reinforcement and permissible strand locations)
Note: Place the number of strands specified in each row symmetrically about the centerline of beam in the permissible strand locations shown.

BAR LIST
ONE BEAM ONLY
(For information only)

Bar	No.	Size	Length	Shape
A(E)	54	#4	3'-7"	—
B(E)	5	#5	59'-8"	—
B1(E)	4	#4	59'-8"	—
S(E)	82	#4	7'-5"	┌
S1(E)	8	#4	7'-3"	┌
S2(E)	74	#4	7'-6"	┌
S3(E)	8	#4	5'-3"	┌
S4(E)	8	#4	5'-2"	┌
U(E)	12	#5	4'-6"	┌
U1(E)	4	#4	6'-9"	┌

Note: See sheet 3 of 8 for additional details and Bill of Material.

27" X 48" PPC DECK BEAM

HAMPTON, LENZINI & RENWICK, INC.
CIVIL & STRUCTURAL ENGINEERS
LAND SURVEYORS
3085 STEVENSON DRIVE, SUITE 201
SPRINGFIELD, ILLINOIS 62703
(217) 546-3400

ELGIN • SPRINGFIELD

PROJECT NUMBER: 08.0075.130 DATE: 04/18/08
DESIGNED: S.M.S. CHECKED: S.W.M. DRAWN: D.A.B.

SUPERSTRUCTURE
SECTION 07-05123-00-BR
DENISON ROAD DISTRICT
LAWRENCE COUNTY
STRUCTURE NO. 051-3282 / STATION 4+35