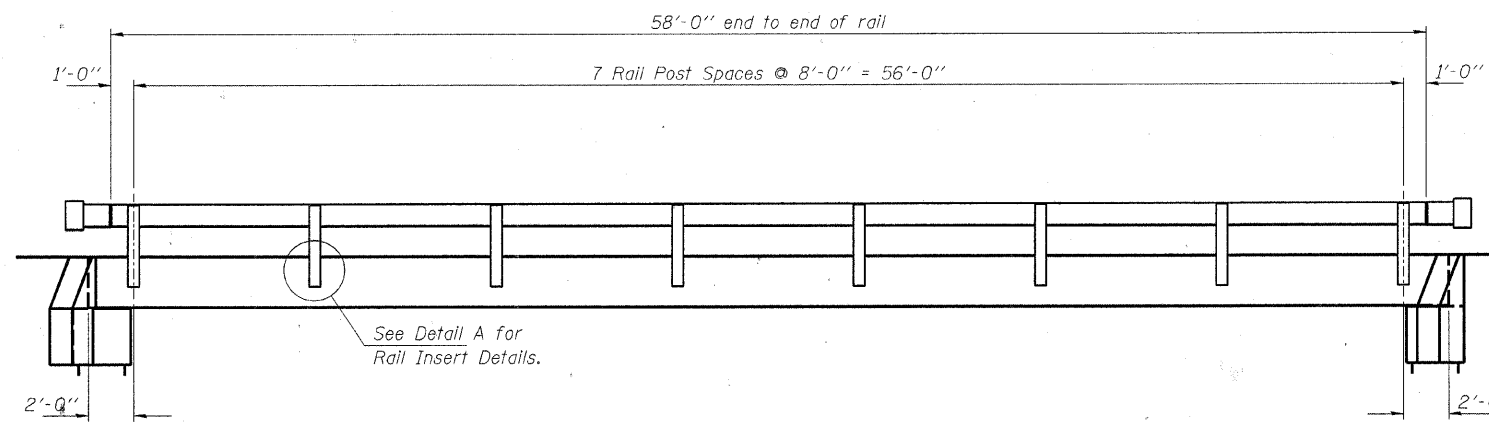


ROUTE NO.	SECTION	COUNTY	TOTAL SHEETS	SHEET NO.
T.R. 249	07-05123-00-BR	LAWRENCE	//	7
FED. ROAD DIST. NO.		ILLINOIS	CONTRACT NO. 95560	

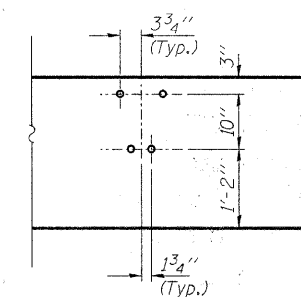
Sheet 4 of 8



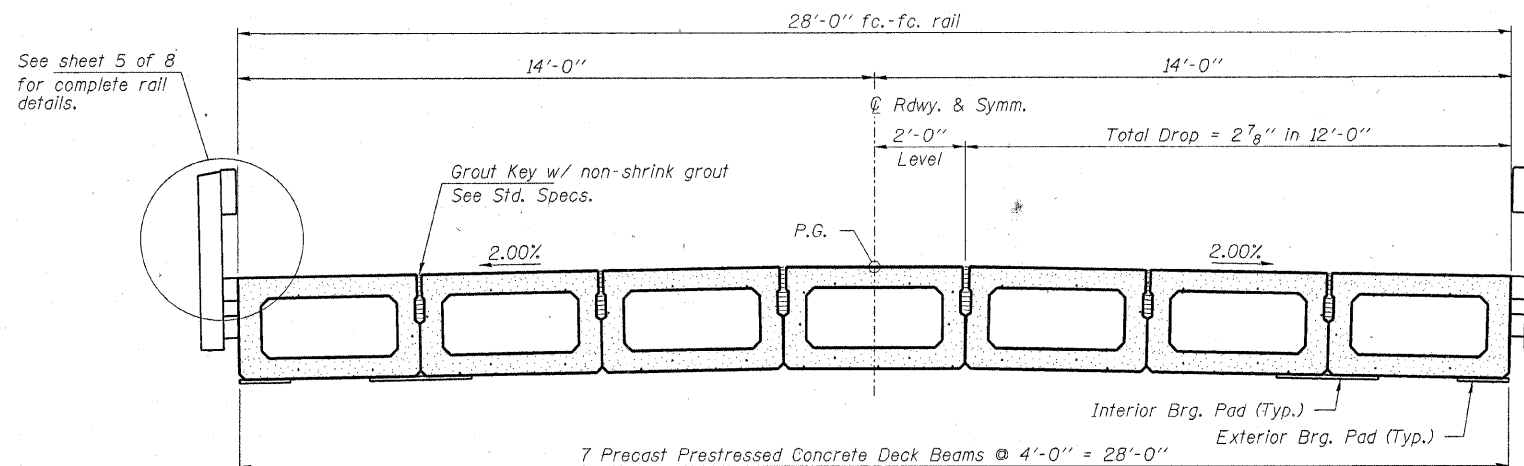
ELEVATION

Showing Rail Post Spaces

See sheet 5 of 8 for Railing Details.



DETAIL A



CROSS SECTION

See sheets 2 & 3 of 8 for Superstructure Details.

	HAMPTON, LENZINI & RENWICK, INC. CIVIL & STRUCTURAL ENGINEERS LAND SURVEYORS		SUPERSTRUCTURE SECTION 07-05123-00-BR DENISON ROAD DISTRICT LAWRENCE COUNTY STRUCTURE NO. 051-3282 / STATION 4+35
	3085 STEVENSON DRIVE, SUITE 201 SPRINGFIELD, ILLINOIS 62703 (217) 546-3400		
PROJECT NUMBER: 08 0075 130 DESIGNED: S.M.S.	DATE: 04/18/08 CHECKED: S.W.M.	ELGIN • SPRINGFIELD DRAWN: D.A.B.	