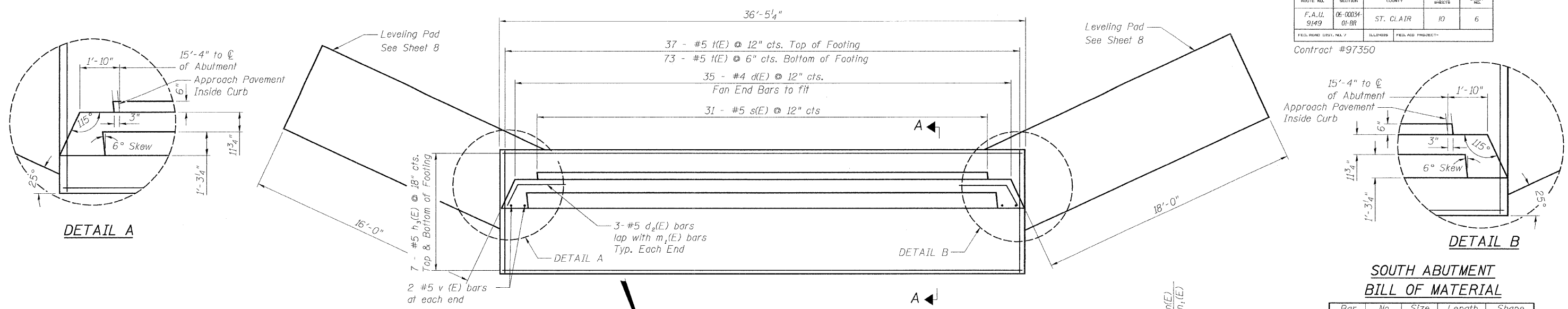
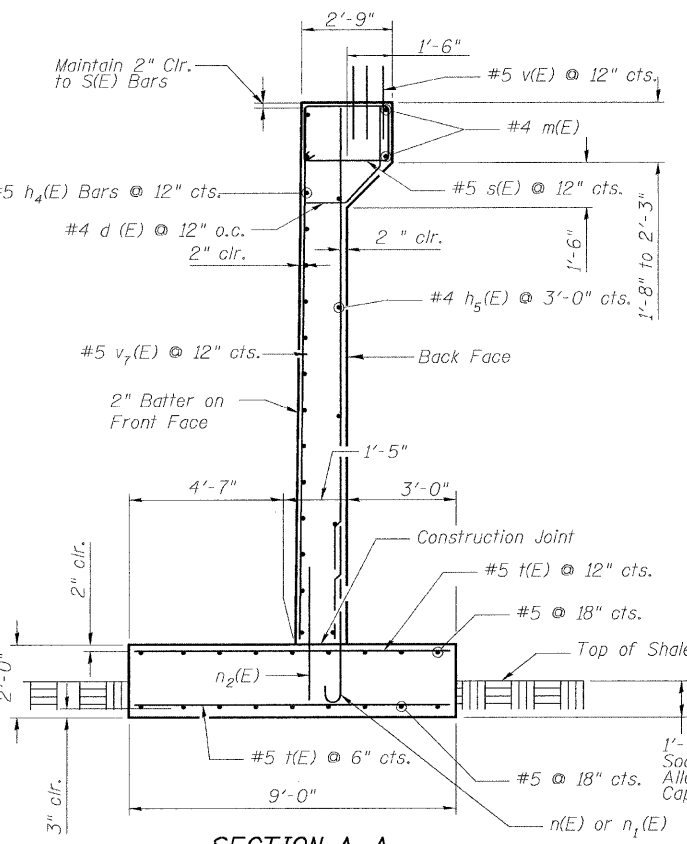


ROUTE NO.	SECTION	COUNTY	TOTAL SHEETS	SHEET NO.
F.A.U. 9149	06-00034-01-BR	ST. CLAIR	10	6

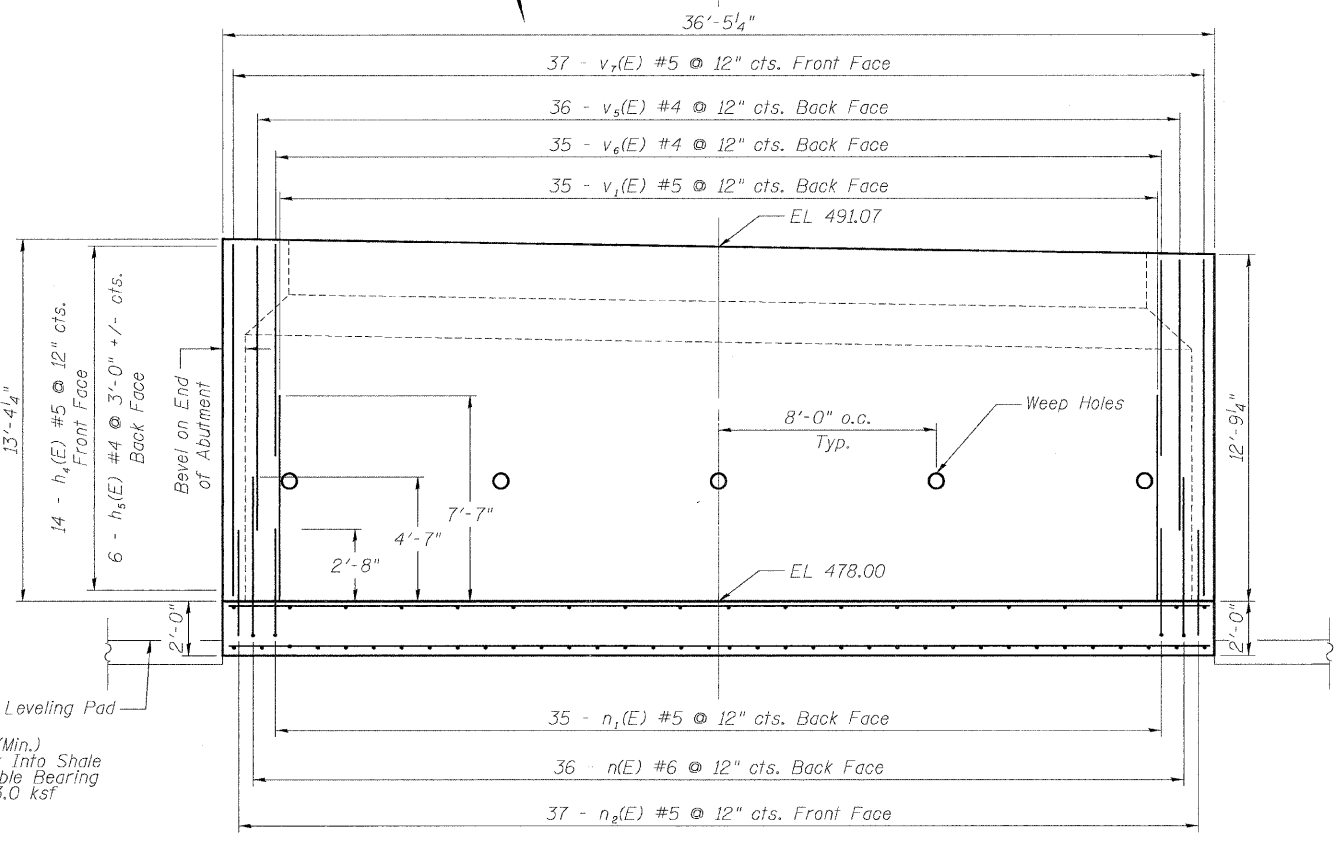
Contract #97350



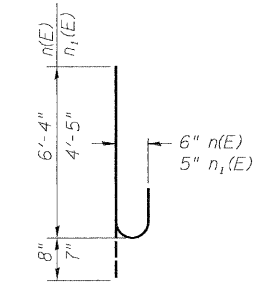
PLAN SOUTH ABUTMENT



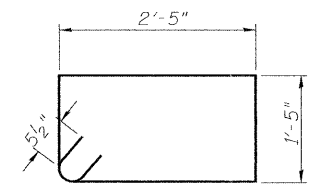
SECTION A-A



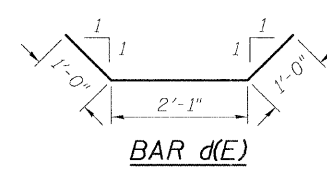
ELEVATION SOUTH ABUTMENT



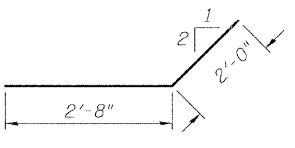
BAR n(E) and n1(E)



BAR s(E)



BAR d(E)



BAR d2(E)

MINIMUM BAR LAP

#4 (E) bar = 2'-0"
#5 (E) bar = 2'-8"

Notes: Upper bar laps increased to accommodate min 28" FRP deck thickness. Thinner deck will require adjustment of bar lengths.

Bill of material includes concrete and reinforcing for hatched area shown on sheet 7 of 11.

SOUTH ABUTMENT BILL OF MATERIAL

Bar	No.	Size	Length	Shape
d(E)	35	#4	4'-1"	
d2(E)	6	#5	4'-8"	
h3(E)	14	#5	36'-0"	
h4(E)	14	#5	35'-6"	
h5(E)	6	#5	34'-6"	
m(E)	2	#4	30'-4"	
m1(E)	6	#5	34'-0"	
n(E)	36	#6	7'-0"	
n1(E)	35	#6	5'-0"	
n2(E)	37	#6	5'-0"	
s(E)	31	#5	8'-7"	
t(E)	110	#5	8'-8"	
v(E)	101	#5	4'-0"	
v1(E)	35	#5	7'-7"	
v5(E)	36	#4	11'-1"	
v6(E)	36	#4	8'-0"	
v7(E)	37	#5	12'-7"	
Concrete Structures		Cu. Yd.	56.6	
Reinforcement Bars, Epoxy Coated		Pound	5470	
Structure Excavation		Cu. Yd.	154	
Rock Excavation for Structures		Cu. Yd.	12	
Porous Granular Embankment (special)		Cu. Yd.	98	

SOUTH ABUTMENT DETAILS
F.A.U. 9149 (PLEASANT RIDGE ROAD)
OVER LITTLE CANTEEN CREEK
SECTION 06-00034-01-BR
STATION 160+36
FAIRVIEW HEIGHTS
STRUCTURE NO. 082-6513

DESIGNED: K.C.M.
CHECKED: T.M.M.
DRAWN: E.J.R.
CHECKED: K.C.M.

McDonough-Whitlow, P.C.
Consulting Engineers & Land Surveyors
138 East Wood Street
Hillsboro, IL 62049
Phone: 217.532.9233
Fax: 217.532.6300
PROFESSIONAL DESIGN NO. 184-002754