

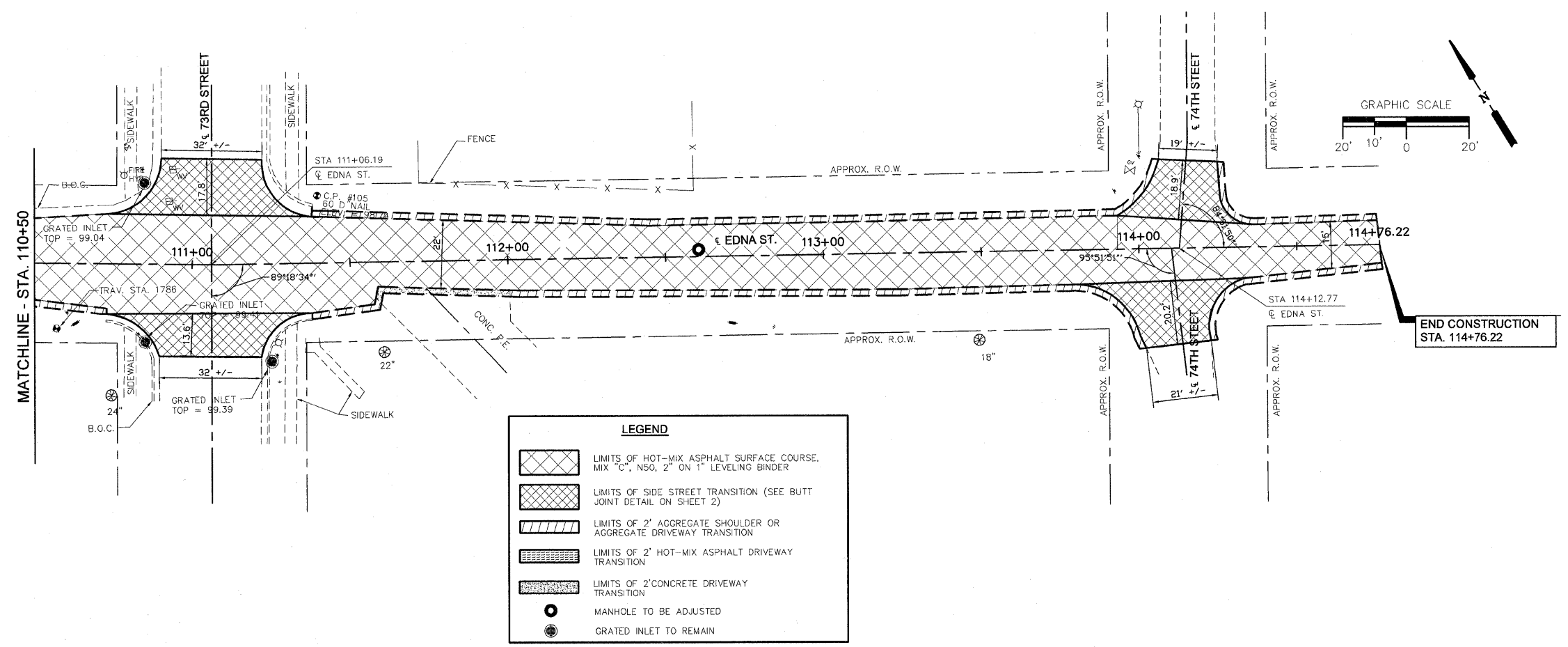
SIGNATURE _____
 DATE _____
 LICENSE EXPIRES _____

FEDERALLY FUNDED STREET RESURFACING
 CITY OF CENTREVILLE
 ST. CLAIR COUNTY, ILLINOIS
 SEC. 05-00015-00-RS

MARK	DATE	DESCRIPTION

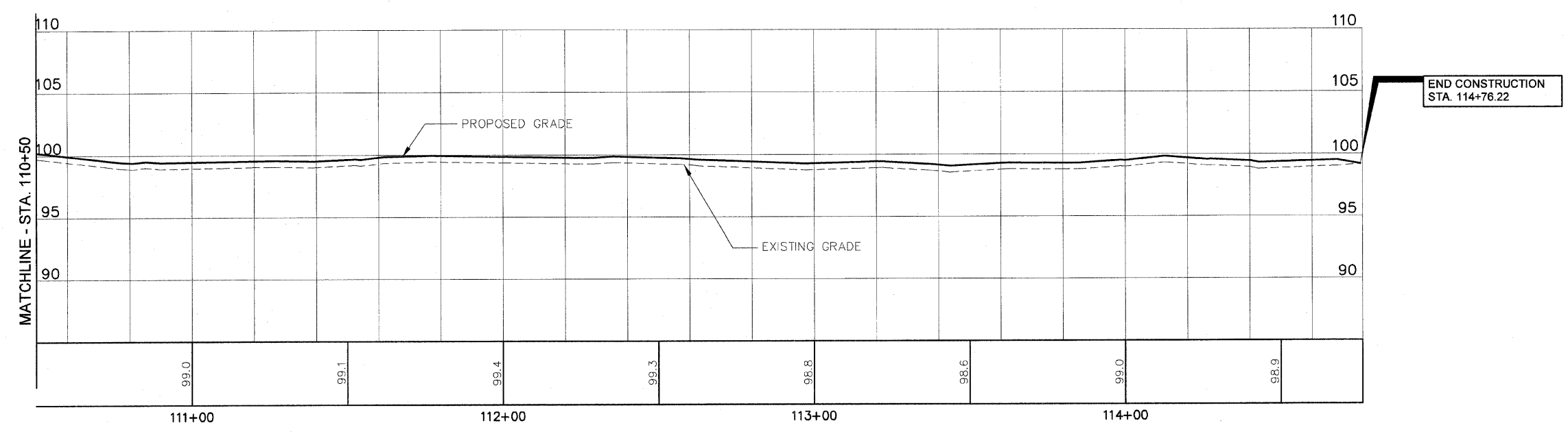
PROJECT NO: 210-1916
 DESIGN: CKA DRAWN: SDD CHECK: MRA

PLAN SHEET -
 EDNA STREET -
 ASH ST. TO
 120 FEET EAST OF
 74TH STREET



LEGEND

- LIMITS OF HOT-MIX ASPHALT SURFACE COURSE, MIX "C", N50, 2" ON 1" LEVELING BINDER
- LIMITS OF SIDE STREET TRANSITION (SEE BUTT JOINT DETAIL ON SHEET 2)
- LIMITS OF 2" AGGREGATE SHOULDER OR AGGREGATE DRIVEWAY TRANSITION
- LIMITS OF 2" HOT-MIX ASPHALT DRIVEWAY TRANSITION
- LIMITS OF 2" CONCRETE DRIVEWAY TRANSITION
- MANHOLE TO BE ADJUSTED
- GRATED INLET TO REMAIN



SCALE:
 1" = 20' HORIZ.
 1" = 5' VERT.