

| F.A.S. RTE. | SECTION        | COUNTY | TOTAL SHEETS | SHEET NO. |
|-------------|----------------|--------|--------------|-----------|
| 932         | (8,9,11)W,RS-1 | *      | 401          | 1         |

JOHNSON & POPE

D-99-032-98



LOCATION OF SECTION INDICATED THUS: —

STATE OF ILLINOIS  
DEPARTMENT OF TRANSPORTATION

DIVISION OF HIGHWAYS

**PROPOSED  
HIGHWAY PLANS**

FAS ROUTE 932 (IL 147)  
SECTION (8,9,11)W,RS-1  
PROJECT: ACRS-0932(190)  
JOHNSON & POPE COUNTY  
C-99-020-02

FOR INDEX OF SHEETS, SEE SHEET NO. 3

FOR SUMMARY OF QUANTITIES, SEE SHEET NO. 6 - 10

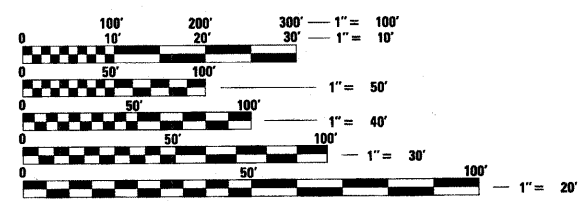
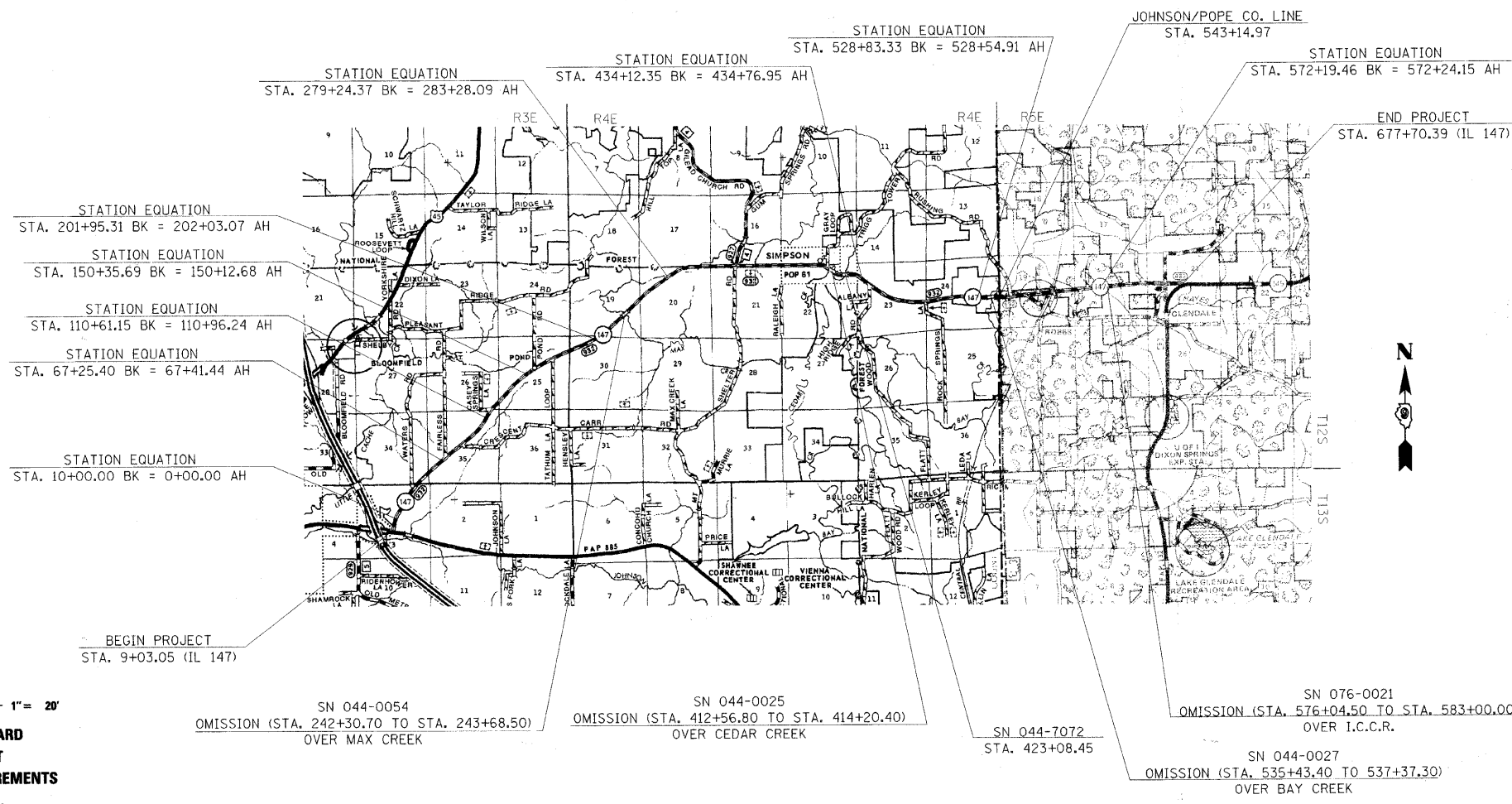
TOWNSHIPS: VIENNA, BLOOMFIELD, SIMPSON, & ALEXANDER

IL 147 (FAS 932)  
TRAFFIC DATA  
WEST OF SIMPSON

|      | (2005) | (2028) |
|------|--------|--------|
| PC=  | 1,420  | 1,995  |
| SU=  | 70     | 100    |
| MU=  | 10     | 15     |
| ADT= | 1,500  | 2,110  |

IL 147 (FAS 932)  
TRAFFIC DATA  
EAST OF SIMPSON

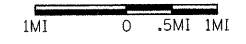
|      | (2005) | (2028) |
|------|--------|--------|
| PC=  | 550    | 780    |
| SU=  | 40     | 55     |
| MU=  | 10     | 15     |
| ADT= | 600    | 850    |



FULL SIZE PLANS HAVE BEEN PREPARED USING STANDARD ENGINEERING SCALES. REDUCED SIZED PLANS WILL NOT CONFORM TO STANDARD SCALES. IN MAKING MEASUREMENTS ON REDUCED PLANS, THE ABOVE SCALES MAY BE USED.

J.U.L.I.E.  
JOINT UTILITY LOCATION INFORMATION FOR EXCAVATION  
1-800-892-0123

CONTRACT NO. 98542



GROSS LENGTH OF PROJECT = 67,794.31 FEET (12.8 MILES)  
NET LENGTH OF PROJECT = 66,659.01 FEET (12.6 MILES)

STATE OF ILLINOIS  
DEPARTMENT OF TRANSPORTATION  
DIVISION OF HIGHWAYS

SUBMITTED Aug 5 20 08  
Max C. James  
DEPUTY DIRECTOR OF HIGHWAYS, REGION 5 ENGINEER

October 3, 20 08  
Eric E. Haral  
INTERIM ENGINEER OF DESIGN AND ENVIRONMENT

October 3, 20 08  
Christine M. Reed  
DIRECTOR OF HIGHWAYS, CHIEF ENGINEER

**PRINTED BY THE AUTHORITY  
OF THE STATE OF ILLINOIS**

PROJECT ENGINEER: CHARLES STEIN (618) 549-2171  
DESIGNER: VALERIE ROLLA (618) 549-2171