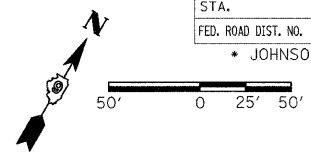


F.A.S. RTE.	SECTION	COUNTY	TOTAL SHEETS	SHEET NO.
932	(8,9,11)W,RS-1	*	401	58
STA.	TO STA.			
FED. ROAD DIST. NO.	ILLINOIS	FED. AID PROJECT	* JOHNSON & POPE	



EXIST. CURVE 9
 PI STA. = 218+25.27
 $\Delta = 21^\circ 43' 52''$ (LT)
 $D = 1^\circ 00' 00''$
 $R = 5,729.65'$
 $T = 1,099.78'$
 $L = 2,173.13'$
 $E = 104.59'$
 P.C. STA. = 207+25.49
 P.T. STA. = 228+88.63

PIPE CULVERT REMOVAL
 PIPE CULVERT
 CLASS D, TYPE 1, 15"
 END SECTIONS, 15"
 USFL 510.95
 DSFL 510.75

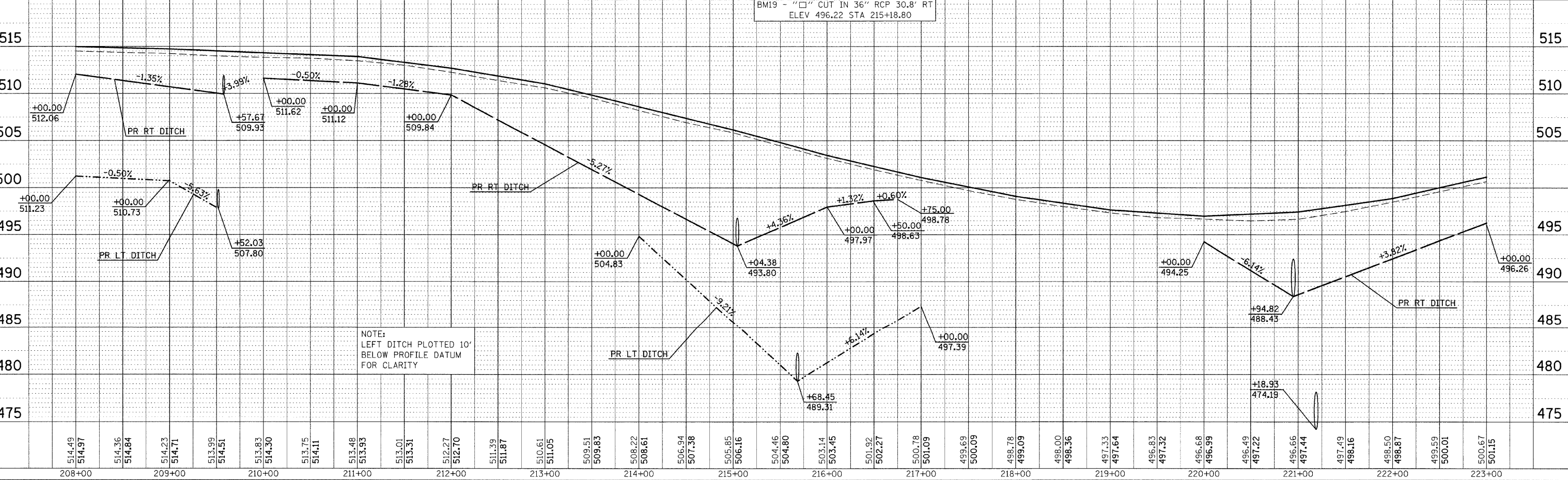
STA 209+55.05
 PIPE CULVERT REMOVAL
 EXTEND EXISTING PIPE CULVERT (24")
 PIPE CULVERT CLASS A, TYPE 1, 24"
 5° SKEW RT AHEAD
 CONCRETE COLLARS
 PRECAST FES 24"
 USFL 509.93
 DSFL 507.80

STA 215+35.64
 EXTEND EXISTING PIPE CULVERT (36")
 PIPE CULVERT CLASS A, TYPE 2, 36"
 30° SKEW LT AHEAD
 CONCRETE COLLARS
 PRECAST FES 36"
 USFL 493.80
 DSFL 489.31

STA 221+03.26
 PIPE CULVERT REMOVAL
 EXTEND EXISTING PIPE CULVERT (48")
 PIPE CULVERT
 CLASS A, TYPE 3, 48"
 11° SKEW LT AHEAD
 CONCRETE COLLARS
 PRECAST FES 48"
 USFL 488.43
 DSFL 474.19

PLAN	DATE	BY
REVISIONS		
NO.	DATE	DESCRIPTION

- TREE REMOVAL, ACRES
- TREE REMOVAL, UNIT
- EXISTING CONCRETE/BRICK DITCH CHECK TO BE REMOVED
- STONE DUMPED RIP RAP, CLASS A4
- CLASS D PATCHING



NOTE:
 LEFT DITCH PLOTTED 10'
 BELOW PROFILE DATUM
 FOR CLARITY

PLAN PROFILE SHEET STA 208+00 TO 223+00

PROFILE	DATE	BY
REVISIONS		
NO.	DATE	DESCRIPTION

DATE-TIME
 JOB-SPEC
 *REF-POBIS