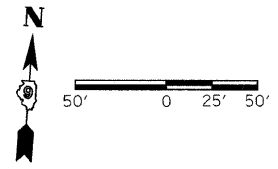


F.A.S. RTE.	SECTION	COUNTY	TOTAL SHEETS	SHEET NO.
932	(8,9,11)W,RS-1	*	401	85
STA.	TO STA.			
FED. ROAD DIST. NO.	ILLINOIS	FED. AID PROJECT	* JOHNSON & POPE	



STA 615+34.31
 EXTEND EXISTING 5'X4' RCBC
 WITH CAST-IN-PLACE WINGWALLS
 CONCRETE BOX CULVERT
 REINFORCEMENT BARS
 44.9° SKEW RT AHEAD
 (SEE STRUCTURAL DETAILS SHEETS NO. 183, 184)
 USFL 426.15
 DSFL 425.50

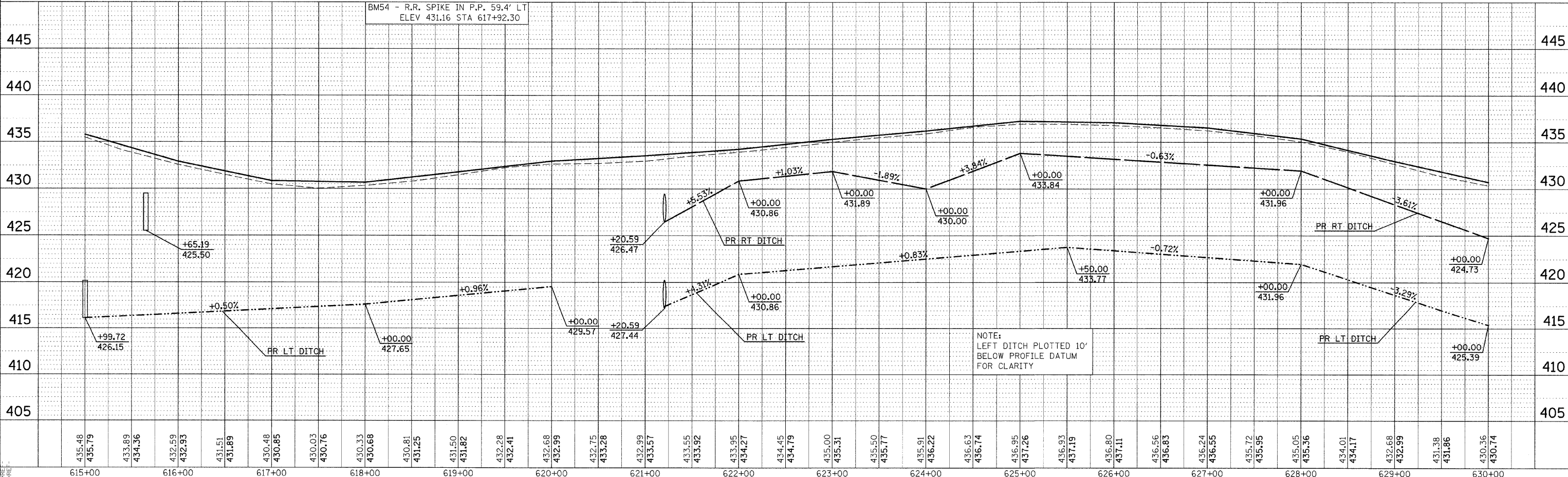
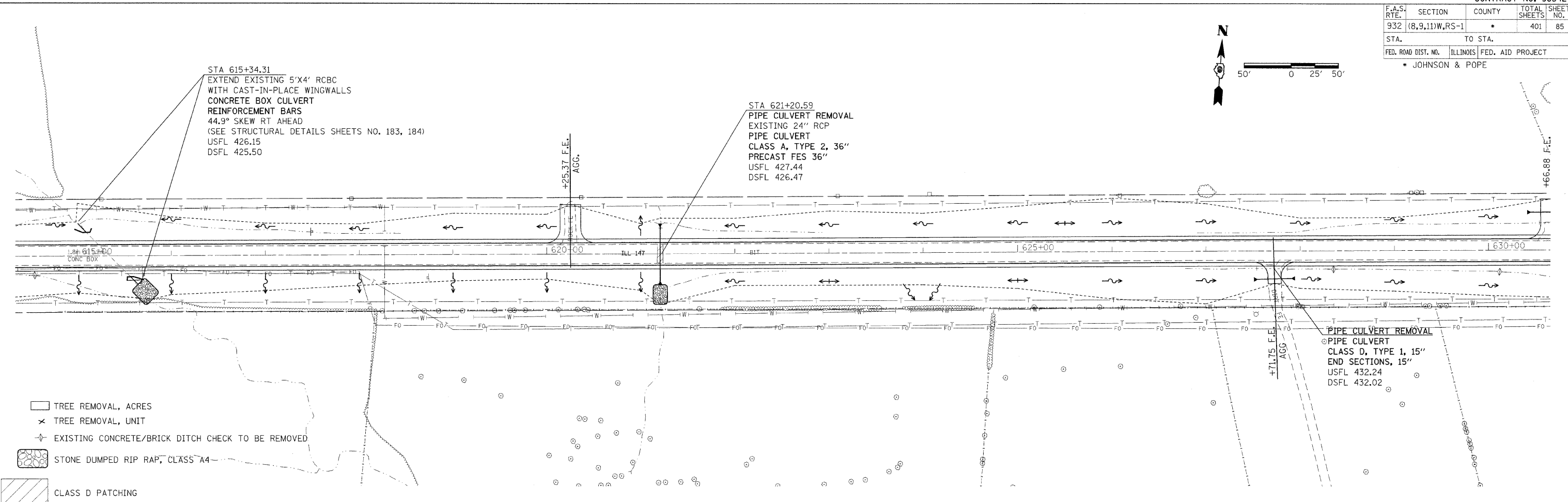
STA 621+20.59
 PIPE CULVERT REMOVAL
 EXISTING 24" RCP
 PIPE CULVERT
 CLASS A, TYPE 2, 36"
 PRECAST FES 36"
 USFL 427.44
 DSFL 426.47

PIPE CULVERT REMOVAL
 PIPE CULVERT
 CLASS D, TYPE 1, 15"
 END SECTIONS, 15"
 USFL 432.24
 DSFL 432.02

DATE	BY

DATE	BY

DATE-TIME
 *DON-SPEC
 *REF-TOPG42
 *REF-DT-GD-52



PLAN PROFILE SHEET STA 615+00 TO 630+00