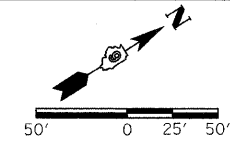
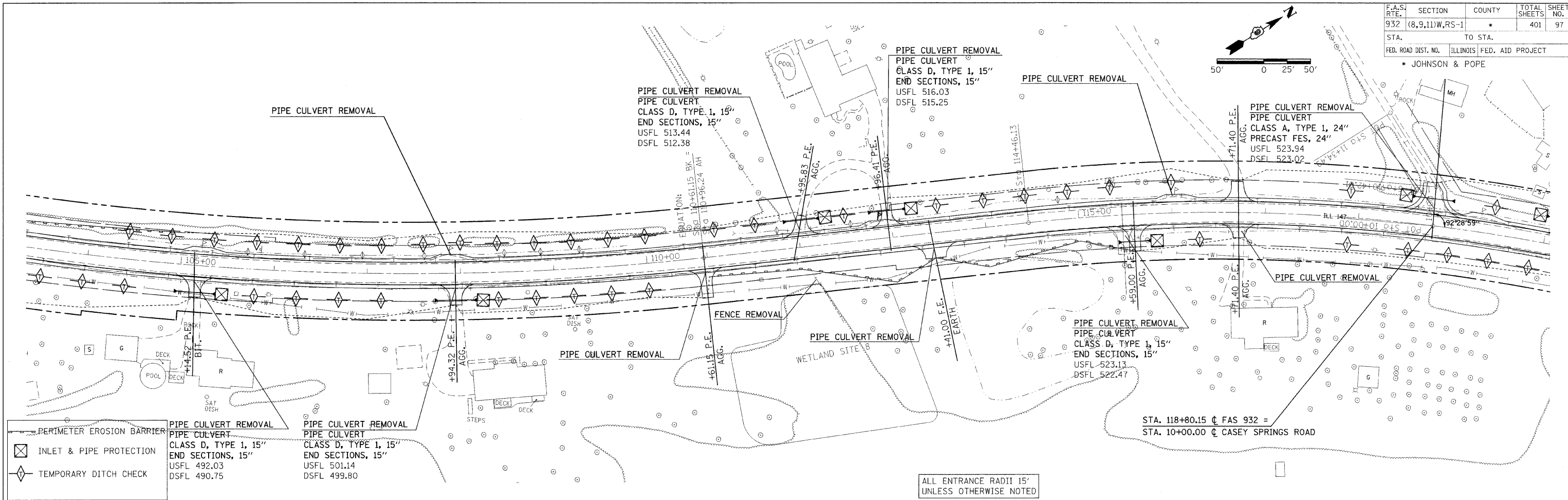


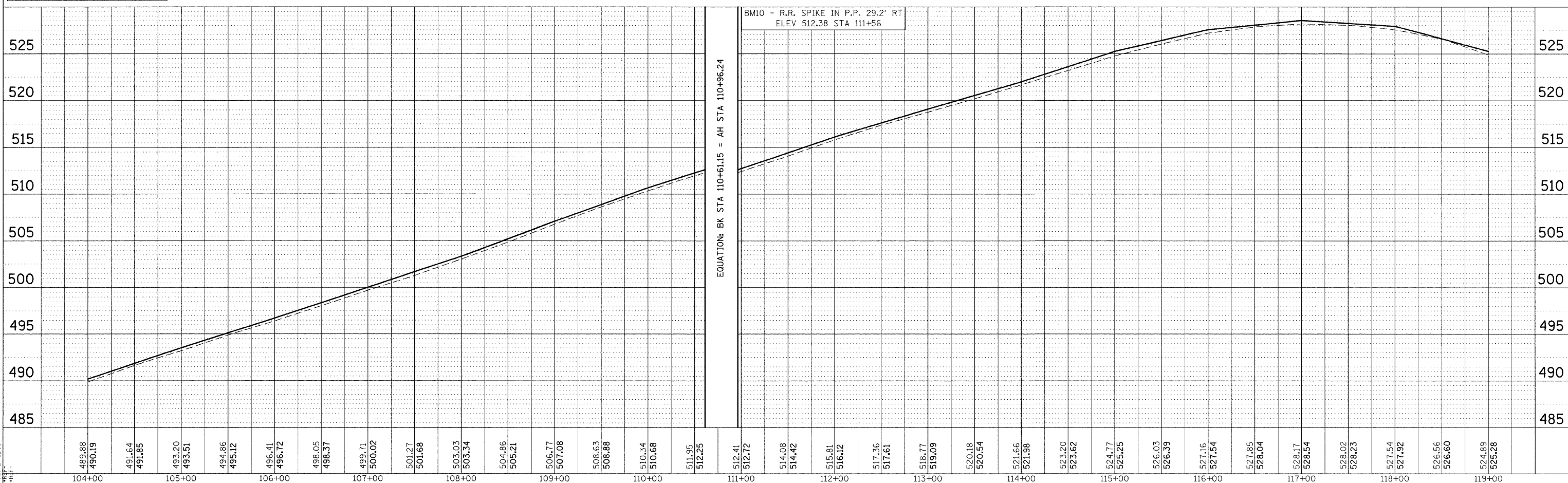
F.A.S. RTE.	SECTION	COUNTY	TOTAL SHEETS	SHEET NO.
932	(8,9,11)W,RS-1	*	401	97
STA.	TO STA.			
FED. ROAD DIST. NO.	ILLINOIS	FED. AID PROJECT	* JOHNSON & POPE	



PLAN	SURVEYED	BY	DATE
	ALIGNED		
	CHECKED		
	BY		
	NOTE BOOK		
	NO. OF PAGES		
	PAID FILE NAME		



PROFILE	SURVEYED	BY	DATE
	ALIGNED		
	CHECKED		
	BY		
	NOTE BOOK		
	NO. OF PAGES		
	PAID FILE NAME		



DATE: 11/15/08
 SCALE: 1"=40'
 DRAWN BY: JTP
 CHECKED BY: JTP
 REF: TDD-08
 REF: D-08