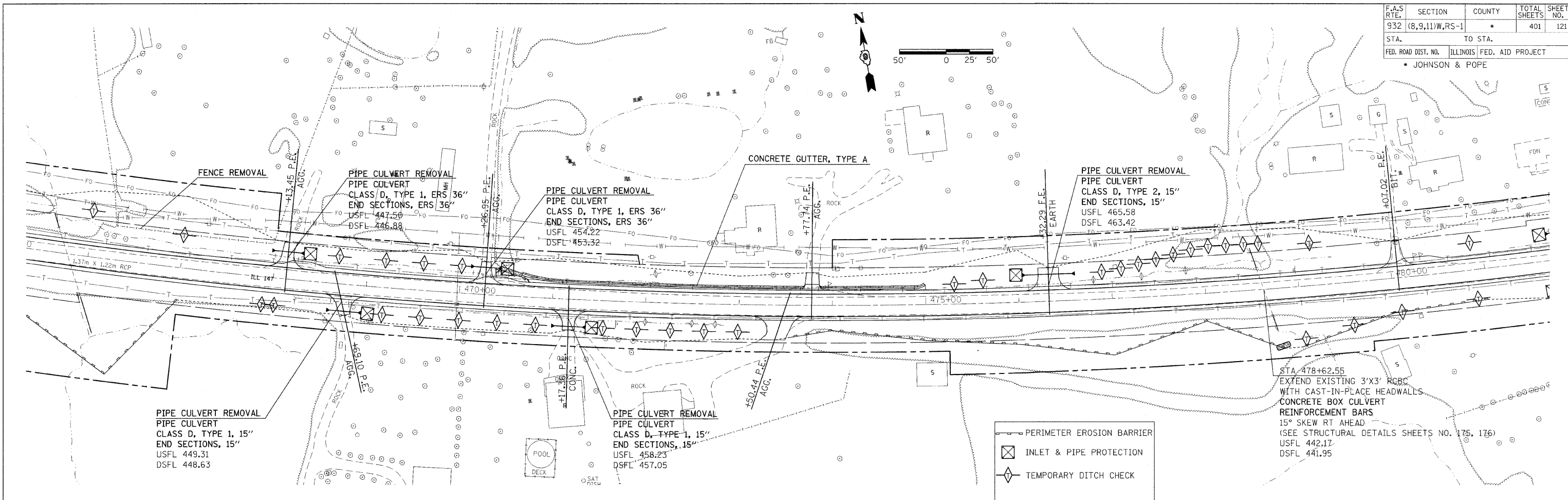
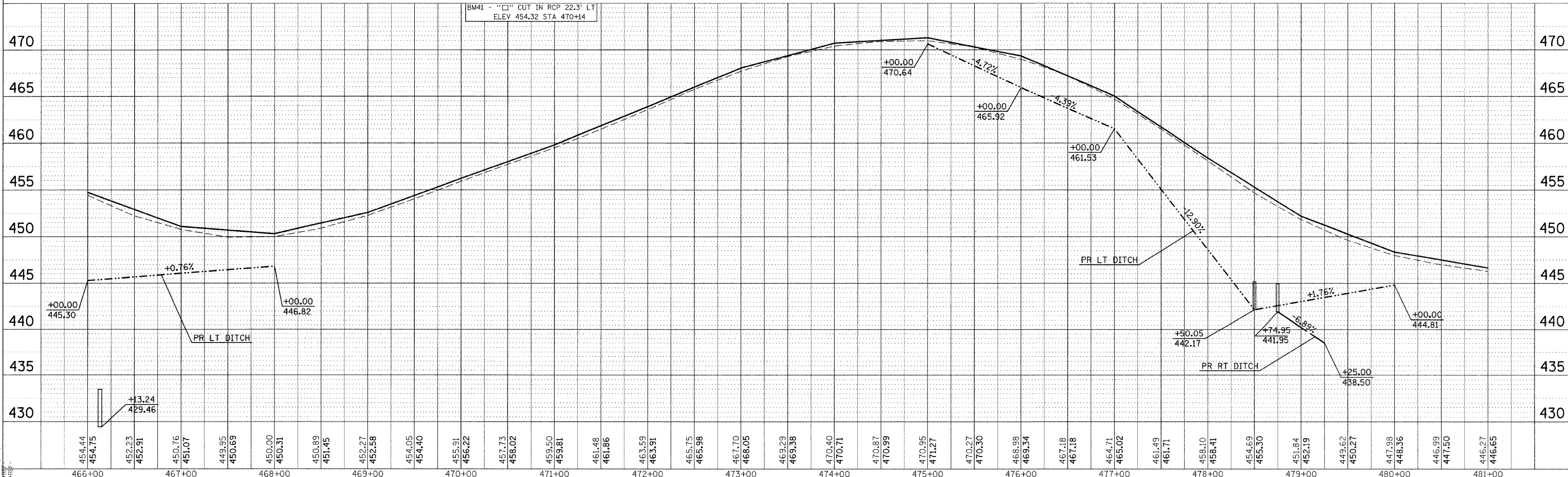


F.A.S. RTE.	SECTION	COUNTY	TOTAL SHEETS	SHEET NO.
932	(8,9,11)W,RS-1	*	401	121
STA.	TO STA.			
FED. ROAD DIST. NO.	ILLINOIS	FED. AID PROJECT		
* JOHNSON & POPE				

PLAIN	SURVEYED	BY	DATE
NOTE BOOK	ALIGNED		
NO.	RT. OF WAY		
	CHECKED		
	NO.		
	CAD FILE		
	NAME		



PROFILE	SURVEYED	BY	DATE
NOTE BOOK	ALIGNED		
NO.	RT. OF WAY		
	CHECKED		
	NO.		
	CAD FILE		
	NAME		



DATE TIME
 *CONS-SPEC
 *REF-10/03/32
 *REF-PR-02/32