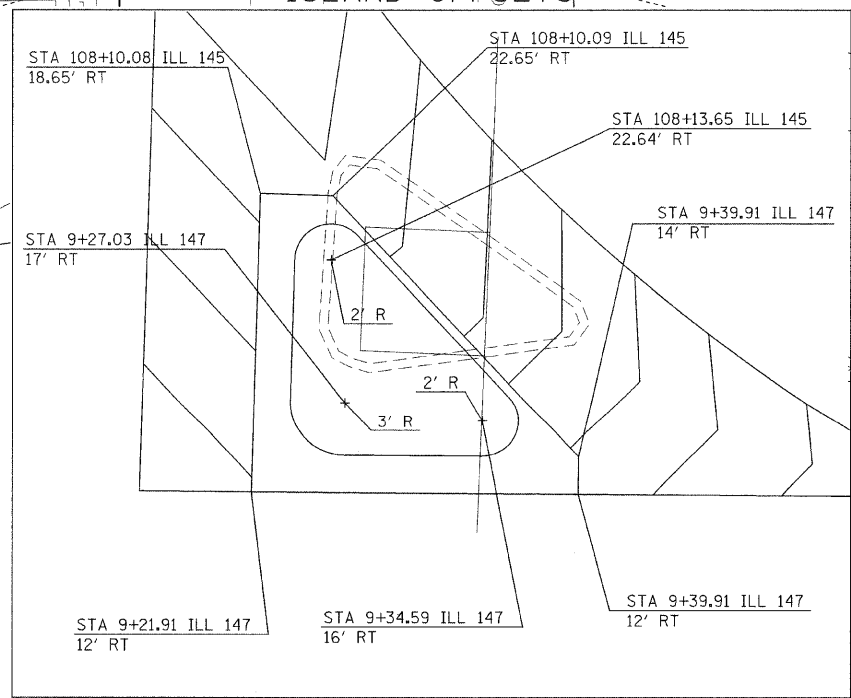
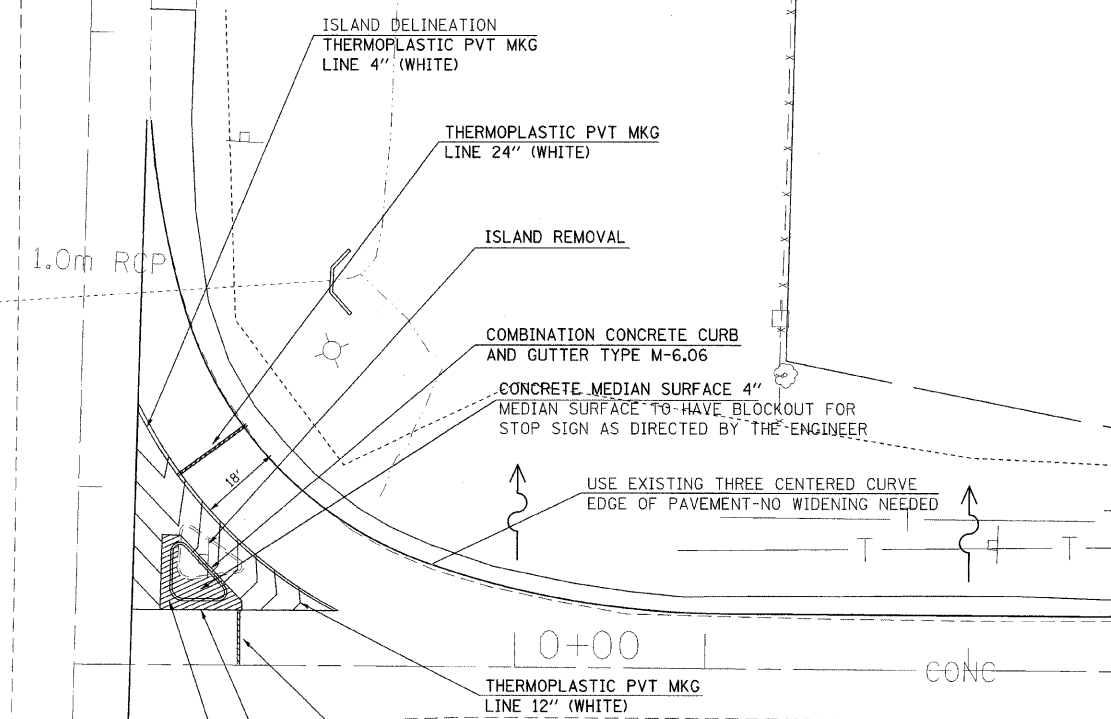


F.A.S. RTE	SECTION	COUNTY	TOTAL SHEETS	SHEET NO
932	(8,9,11)W,RS-1	*	401	159
STA.		TO STA.		
FED. ROAD DIST. NO. -		ILLINOIS	FED. AID PROJECT	
* JOHNSON & POPE				

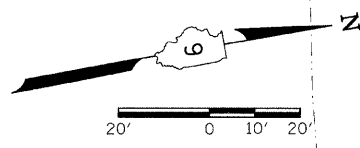
NORTHWEST QUADRANT

STATIONING ALONG ILL 146	OFFSET TO E.P.	STATIONING ALONG ILL 147	OFFSET TO E.P.	DISTANCE ALONG RADIUS
	FEET		FEET	
LT. 106+94.70	12.93 PC			10
LT. 107+04.70	12.93			10
LT. 107+14.69	13.44			10
LT. 107+24.64	14.44			10
LT. 107+34.52	15.93			10
LT. 107+44.32	17.92			10
LT. 107+54.01	20.40			5.26
LT. 107+59.05	21.89 PCC	LT. 9+26.58	79.5 PCC	4.74
LT. 107+63.54	23.43	LT. 9+28.02	74.98	10
LT. 107+72.68	27.47	LT. 9+31.87	65.76	10
LT. 107+81.28	32.55	LT. 9+36.78	57.06	10
LT. 107+89.23	38.61	LT. 9+42.68	48.98	10
LT. 107+96.41	45.56	LT. 9+49.48	41.66	10
LT. 108+02.73	53.31	LT. 9+57.09	35.19	10
LT. 108+08.09	61.74	LT. 9+65.41	29.65	10
LT. 108+12.43	70.74	LT. 9+74.33	25.13	7.16
LT. 108+14.87	77.47 PCC	LT. 9+81.00	22.55 PCC	2.84
		LT. 9+83.70	21.66	10
		LT. 9+93.29	18.83	10
		LT. 0+03.01	16.48	10
		LT. 0+12.83	14.62	10
		LT. 0+22.74	13.26	10
		LT. 0+32.70	12.39	10
		LT. 0+42.69	12.02	10
		LT. 0+45.11	12.00 PT	2.42

3 CENTERED CURVE
RADI = 200' - 85' - 200'
OFFSET = 6.068'
MATCH EXISTING RADIUS



2 CENTERED CURVE
RADI = 65' & 380'
OFFSET = 10'



NORTHEAST QUADRANT

STATIONING ALONG ILL 146	OFFSET TO E.P.	STATIONING ALONG ILL 147	OFFSET TO E.P.	DISTANCE ALONG RADIUS
	FEET		FEET	
LT. 109+24.51	12.37 PC			10
LT. 109+14.55	13.12			10
LT. 109+04.82	15.40			10
LT. 108+95.56	19.14			10
LT. 108+86.98	24.25			10
LT. 108+79.28	30.62			10
LT. 108+72.65	38.10			10
LT. 108+67.25	46.50			10
LT. 108+63.19	55.63			10
LT. 108+61.86	59.83 PCC	RT. 9+62.40	24.06 PCC	4.41
		RT. 9+67.82	22.71	5.59
		RT. 9+77.57	20.48	10
		RT. 9+87.37	18.51	10
		RT. 9+97.22	16.79	10
		RT. 0+07.12	15.34	10
		RT. 0+17.05	14.15	10
		RT. 0+27.00	13.22	10
		RT. 0+36.98	12.55	10
		RT. 0+46.97	12.14	10
		RT. 0+56.98	12.00 PT	10