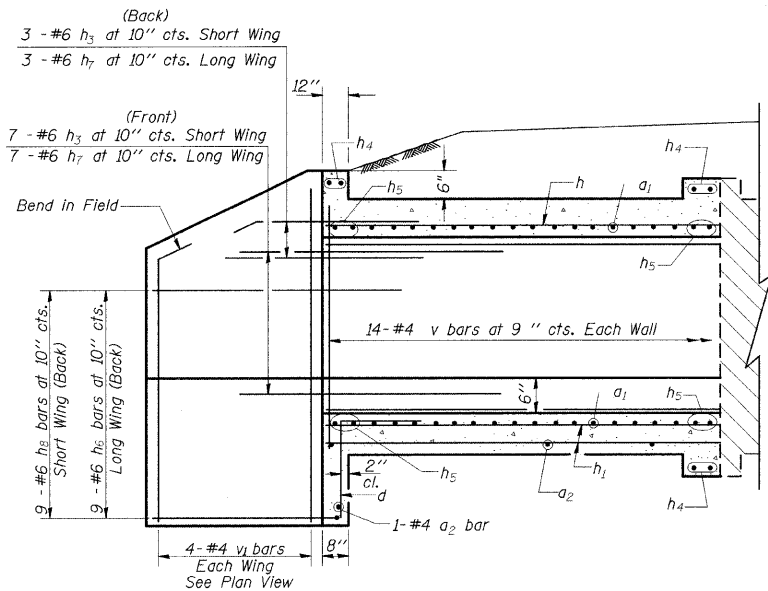
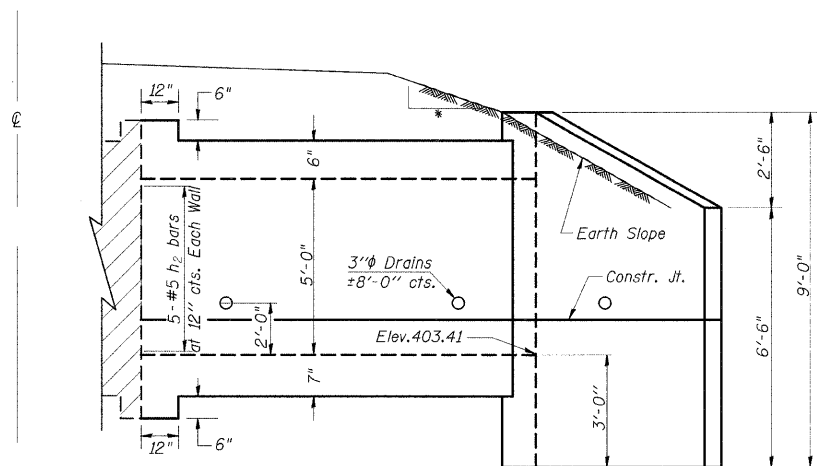


STATE OF ILLINOIS
DEPARTMENT OF TRANSPORTATION

F.A.S. RTE	SECTION	COUNTY	TOTAL SHEETS	SHEET NO.
932	(8,9,11)W,RS-1		401	171
STA.	TO STA.			
FED. ROAD DIST. NO.	ILLINOIS	FED. AID PROJECT		
JOHNSON/POPE				

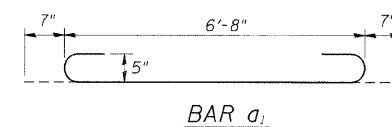
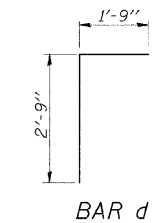
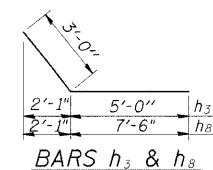


HALF LONG SECTION



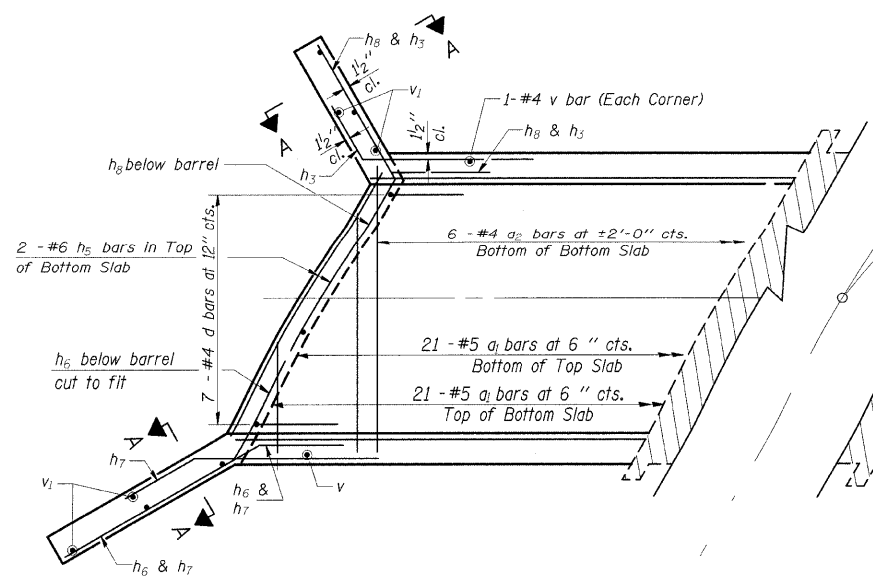
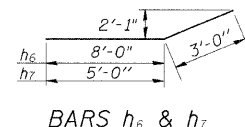
HALF ELEVATION

- 4:1 TO CLEAR ZONE
- 3:1 AFTER CLEAR ZONE



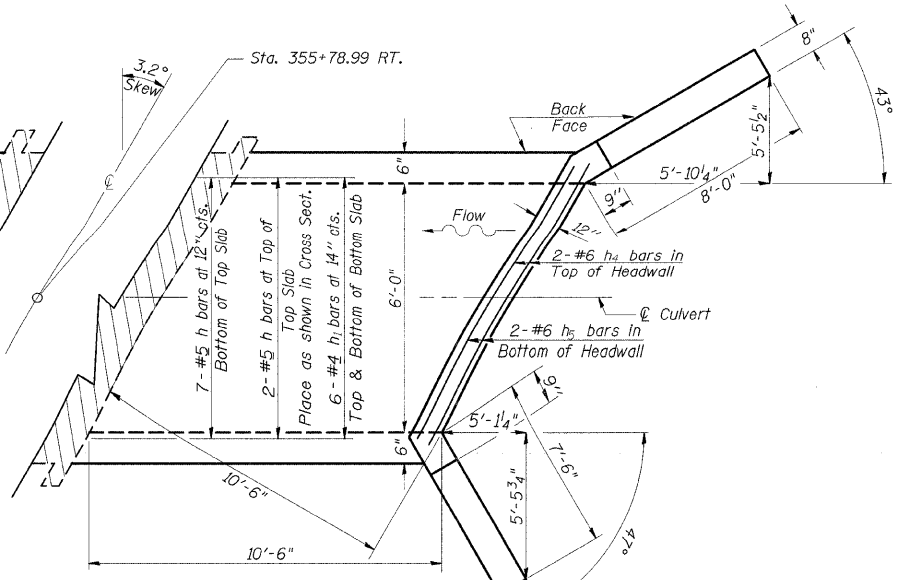
DESIGN STRESSES
 $f_y = 60,000$ psi
 $f'_c = 3,500$ psi

LOADING HS 20-44 & ALT.



SHOWING REINFORCEMENT

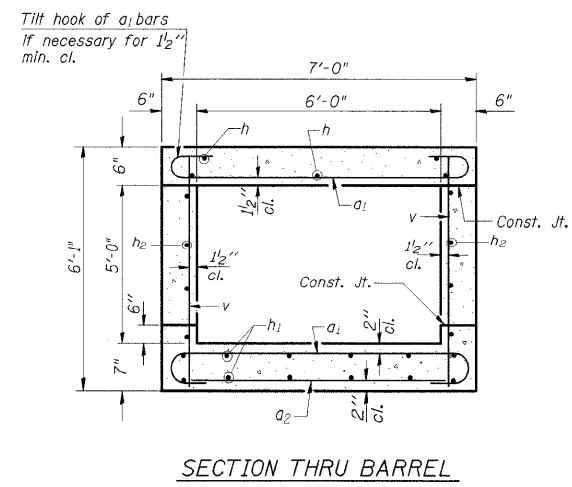
PLAN



SHOWING OUTLINES

NOTES

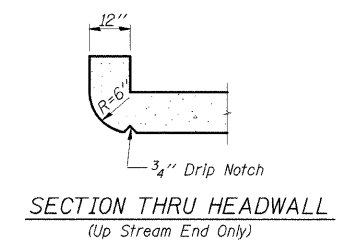
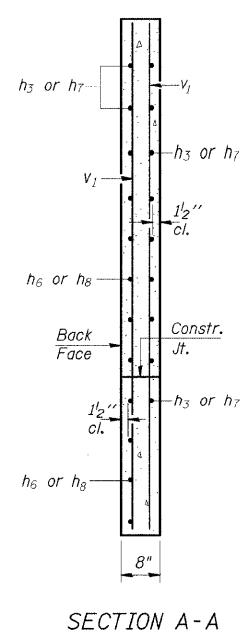
A distance of half the length of the wingwall but not less than six feet of the barrel shall be poured monolithically with the wingwalls.
Reinforcement Bars shall conform to the requirements of AASHTO M-31, M-42 or M-53, Grade 60.
Bars indicated thus 12 x 4-#5 etc. indicates 12 lines of bars with 4 lengths per line.
All construction joints shall be bonded.



BILL OF MATERIAL

Bar	No.	Size	Length	Shape
a_1	42	#5	7'-10"	
a_2	7	#4	6'-3"	
d	7	#4	4'-6"	
h	9	#5	10'-3"	
h_1	12	#4	10'-3"	
h_2	10	#5	10'-3"	
h_3	10	#6	8'-0"	
h_4	6	#6	6'-2"	
h_5	8	#6	6'-8"	
h_6	9	#6	11'-0"	
h_7	10	#6	8'-0"	
h_8	9	#6	10'-6"	
v	30	#4	5'-9"	
v_1	8	#4	8'-7"	
Expansion Bolts $\frac{3}{4}$ " Each 18				
Concrete Box Culverts Cu. Yd. 8.2				
Reinforcement Bars Pound 1510				

PRECAST OPTION NOT ALLOWED



ILLINOIS DEPARTMENT OF TRANSPORTATION
BOX CULVERT EXTENSION
STATION 355+78.99 RT.
6' X 5', SKEW 3.2° RT. AH.
EXTEND 10'-6"