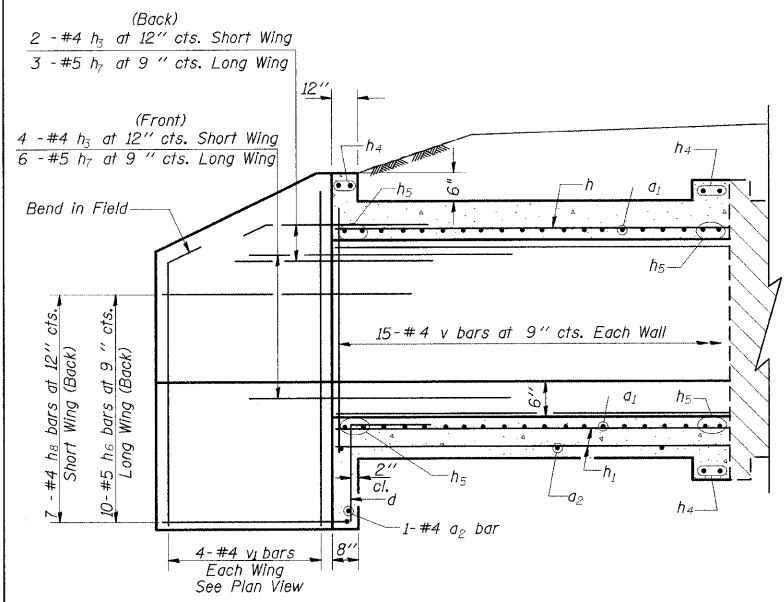
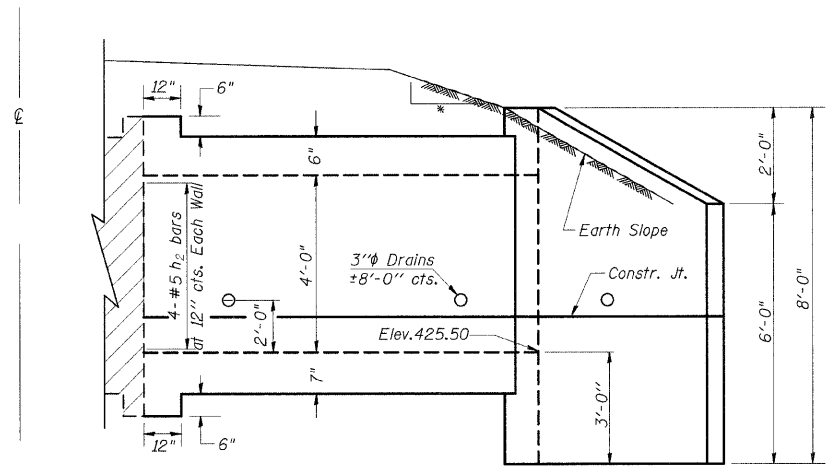


STATE OF ILLINOIS
DEPARTMENT OF TRANSPORTATION

| | | | | |
|---------------------|----------------|------------------|--------------|----------|
| F.A.S. RTE | SECTION | COUNTY | TOTAL SHEETS | SHEET NO |
| 932 | (8,9,11)W,RS-1 | * | 401 | 183 |
| STA. | TO STA. | | | |
| FED. ROAD DIST. NO. | ILLINOIS | FED. AID PROJECT | | |
| * JOHNSON/POPE | | | | |

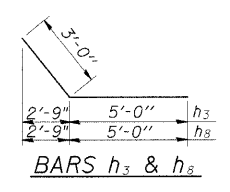


HALF LONG. SECTION

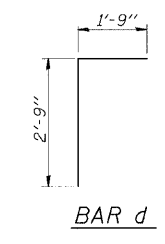


HALF ELEVATION

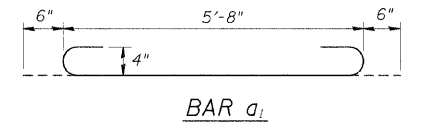
- 4:1 TO CLEAR ZONE
- 3:1 AFTER CLEAR ZONE



BARS h3 & h8



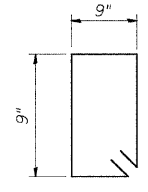
BAR d



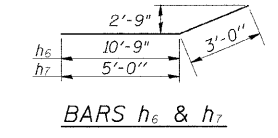
BAR a1

DESIGN STRESSES
fy = 60,000 psi
f'c = 3,500 psi

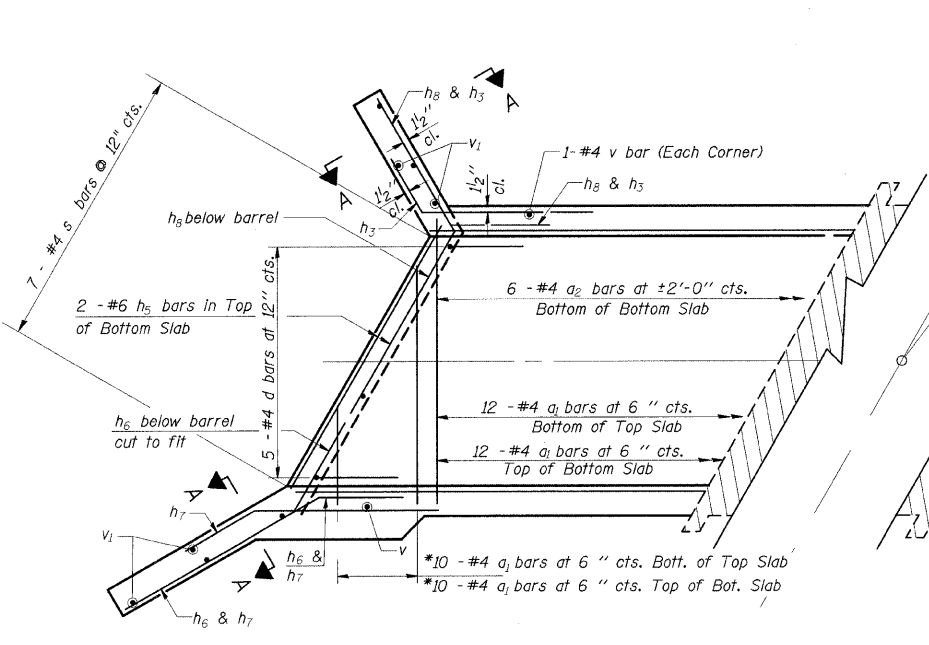
LOADING HS 20-44 & ALT.



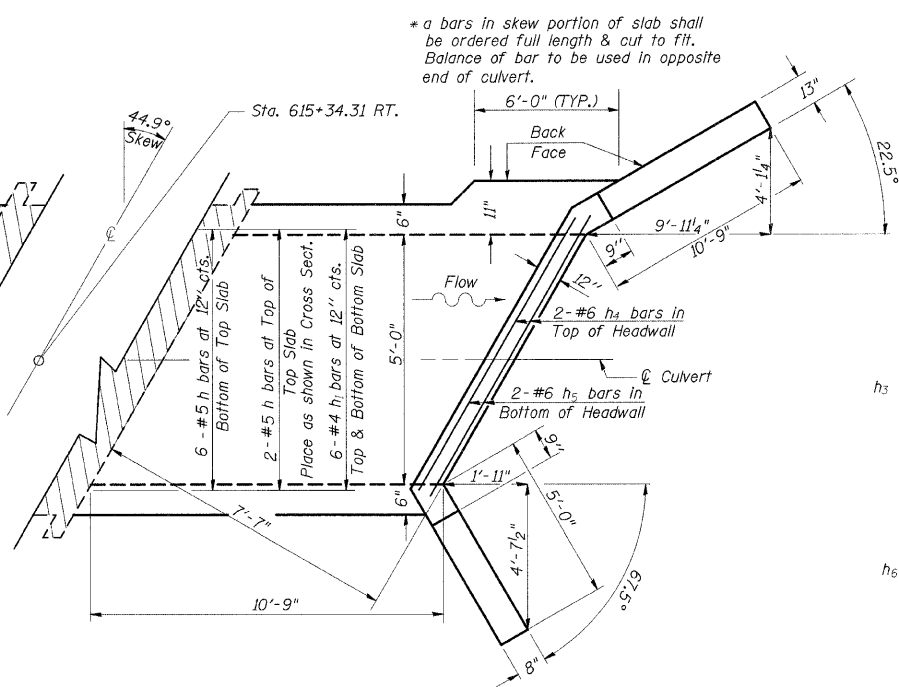
Bar s
(Downstream)



BARS h6 & h7



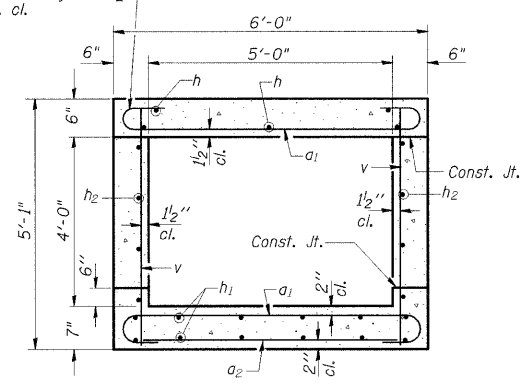
SHOWING REINFORCEMENT



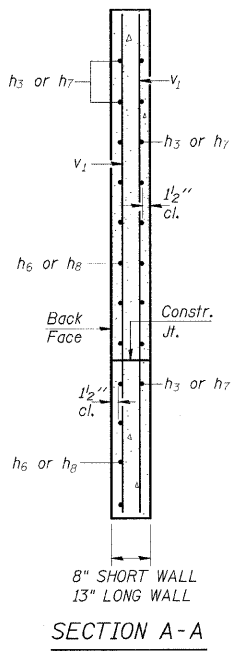
SHOWING OUTLINES

* a bars in skew portion of slab shall be ordered full length & cut to fit. Balance of bar to be used in opposite end of culvert.

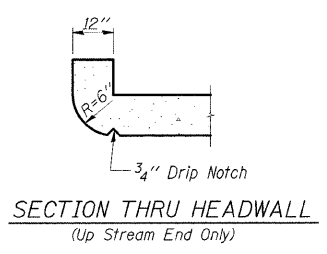
Tilt hook of a1 bars if necessary for 1/2 inch min. cl.



SECTION THRU BARREL



SECTION A-A



SECTION THRU HEADWALL
(Up Stream End Only)

BILL OF MATERIAL

| Bar | No. | Size | Length | Shape | |
|-----------------------|-----|------|--------|---------|------|
| a1 | 44 | #4 | 6'-8" | U | |
| a2 | 7 | #4 | 5'-3" | U | |
| d | 5 | #4 | 4'-6" | L | |
| h | 8 | #5 | 10'-6" | — | |
| h1 | 12 | #4 | 10'-6" | — | |
| h2 | 8 | #5 | 10'-6" | — | |
| h3 | 6 | #4 | 8'-0" | — | |
| h4 | 6 | #6 | 6'-5" | — | |
| h5 | 8 | #6 | 8'-2" | — | |
| h6 | 10 | #5 | 13'-9" | — | |
| h7 | 9 | #5 | 8'-0" | — | |
| h8 | 7 | #4 | 8'-0" | — | |
| v | 32 | #4 | 4'-9" | — | |
| v1 | 8 | #4 | 8'-7" | — | |
| s | 7 | #4 | 3'-9" | U | |
| Expansion Bolts 3/4" | | | | Each | 16 |
| Concrete Box Culverts | | | | Cu. Yd. | 9.2 |
| Reinforcement Bars | | | | Pound | 1110 |

PRECAST OPTION NOT ALLOWED

PLAN
NOTES

A distance of half the length of the wingwall but not less than six feet of the barrel shall be poured monolithically with the wingwalls.
Reinforcement Bars shall conform to the requirements of AASHTO M-31, M-42 or M-53, Grade 60.
Bars indicated thus 12 x 4-#5 etc. indicates 12 lines of bars with 4 lengths per line.
All construction joints shall be bonded.

ILLINOIS DEPARTMENT OF TRANSPORTATION
BOX CULVERT EXTENSION
STATION 615+34.31 RT.
5' X 4', SKEW 44.9° RT. AH.
EXTEND 10'-9"