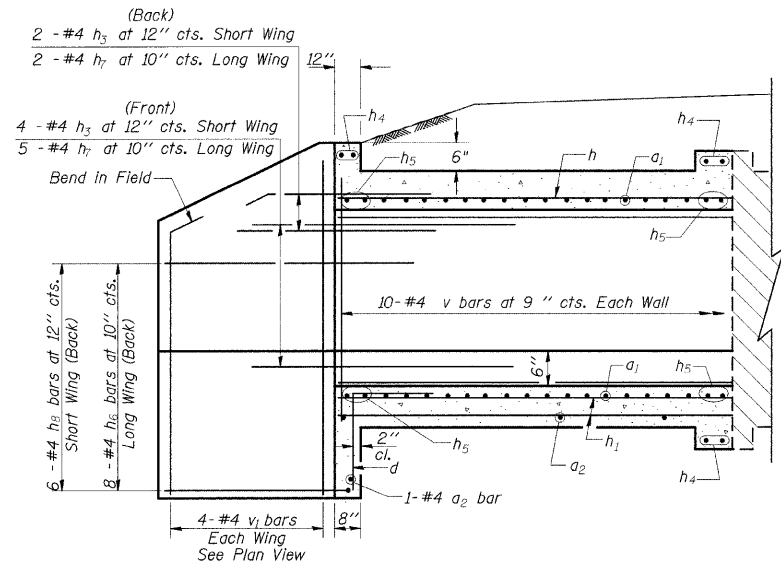
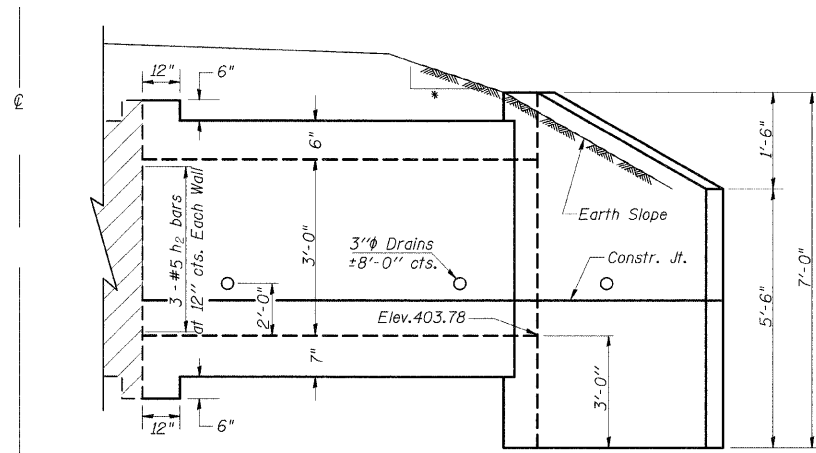


STATE OF ILLINOIS
DEPARTMENT OF TRANSPORTATION

F.A.S. RTE	SECTION	COUNTY	TOTAL SHEETS	SHEET NO
932	(8,9,11)W,RS-1		401	189
STA. TO STA.		ILLINOIS FED. AID PROJECT		
JOHNSON/POPE				

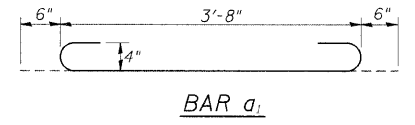
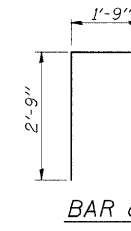
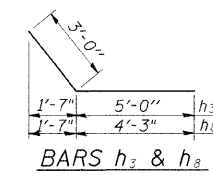


HALF LONG SECTION



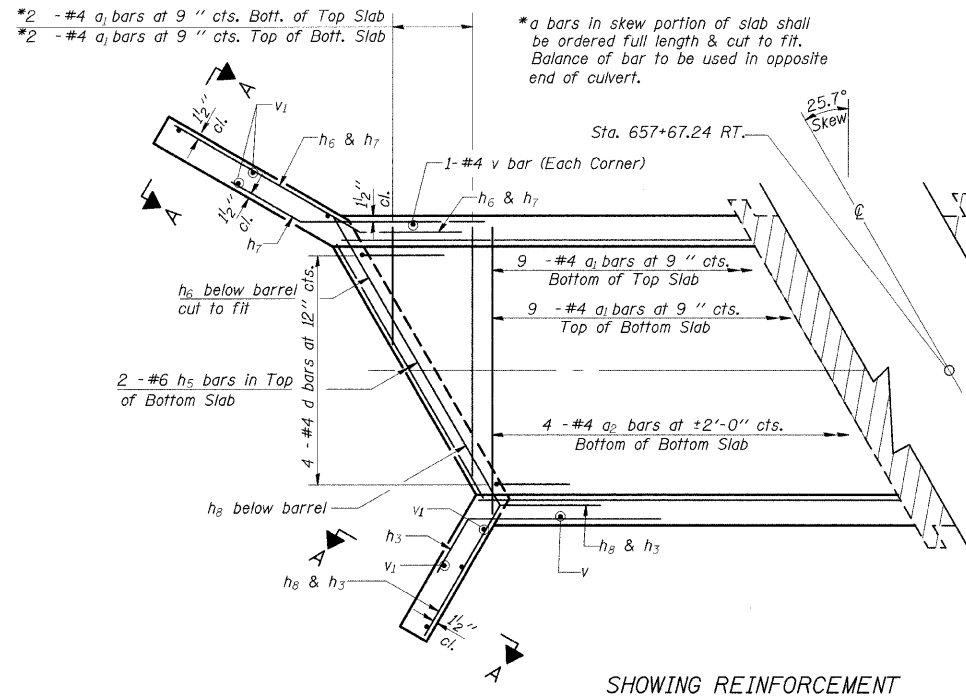
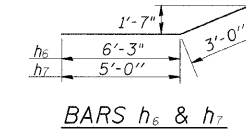
HALF ELEVATION

- 4:1 TO CLEAR ZONE
- 3:1 AFTER CLEAR ZONE

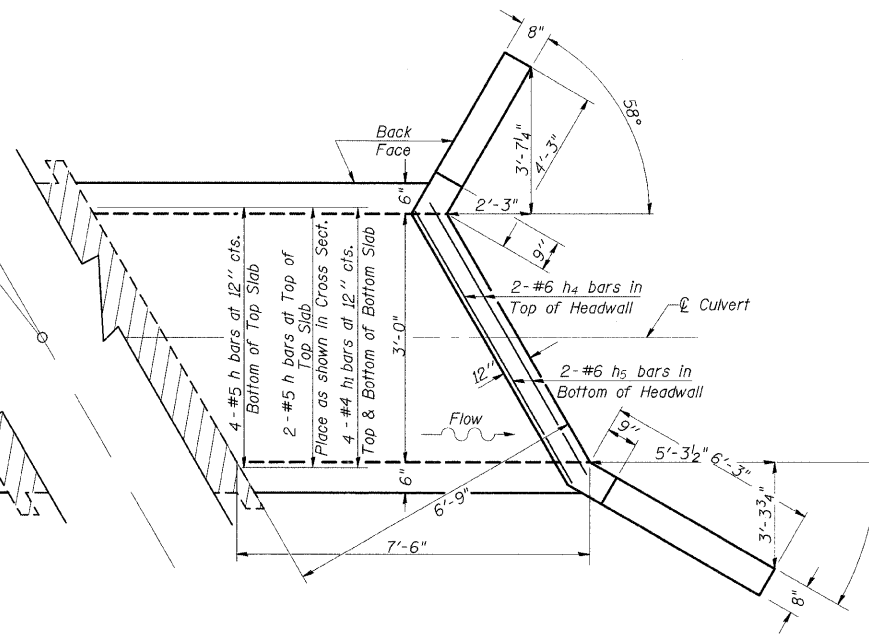


DESIGN STRESSES
 $f_y = 60,000$ psi
 $f'_c = 3,500$ psi

LOADING HS 20-44 & ALT.



SHOWING REINFORCEMENT

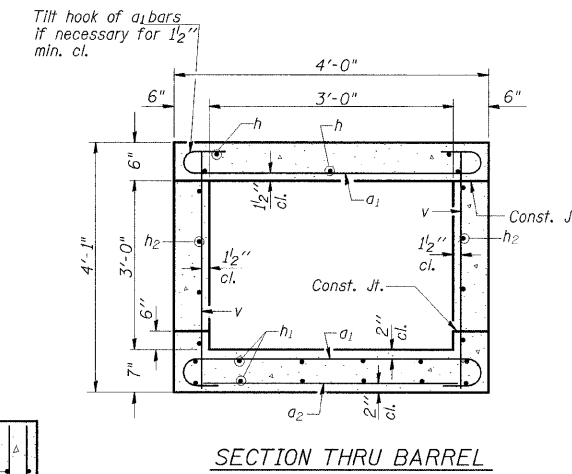


SHOWING OUTLINES

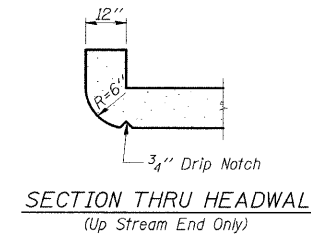
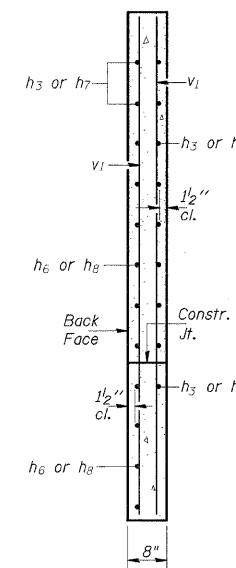
PLAN

NOTES

A distance of half the length of the wingwall but not less than six feet of the barrel shall be poured monolithically with the wingwalls.
Reinforcement Bars shall conform to the requirements of AASHTO M-31, M-42 or M-53, Grade 60.
Bars indicated thus 12 x 4-#5 etc. indicates 12 lines of bars with 4 lengths per line.
All construction joints shall be bonded.



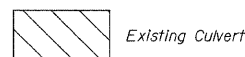
SECTION THRU BARREL



BILL OF MATERIAL

Bar	No.	Size	Length	Shape	
a_1	22	#4	4'-8"	U	
a_2	5	#4	3'-3"	—	
d	4	#4	4'-6"	L	
h	6	#5	7'-3"	—	
h_1	8	#4	7'-3"	—	
h_2	6	#5	7'-3"	—	
h_3	6	#4	8'-0"	—	
h_4	6	#6	3'-7"	—	
h_5	8	#6	4'-1"	—	
h_6	8	#4	9'-3"	—	
h_7	7	#4	8'-0"	—	
h_8	6	#4	7'-3"	—	
v	22	#4	3'-9"	—	
v_1	8	#4	6'-7"	—	
Expansion Bolts 3/4"				Each	10
Concrete Box Culverts				Cu. Yd.	4.0
Reinforcement Bars				Pound	540

LEGEND



ILLINOIS DEPARTMENT OF TRANSPORTATION
BOX CULVERT EXTENSION
STATION 657+67.24 RT.
3' X 3', SKEW 25.7° LT. AH.
EXTEND 7'-6"