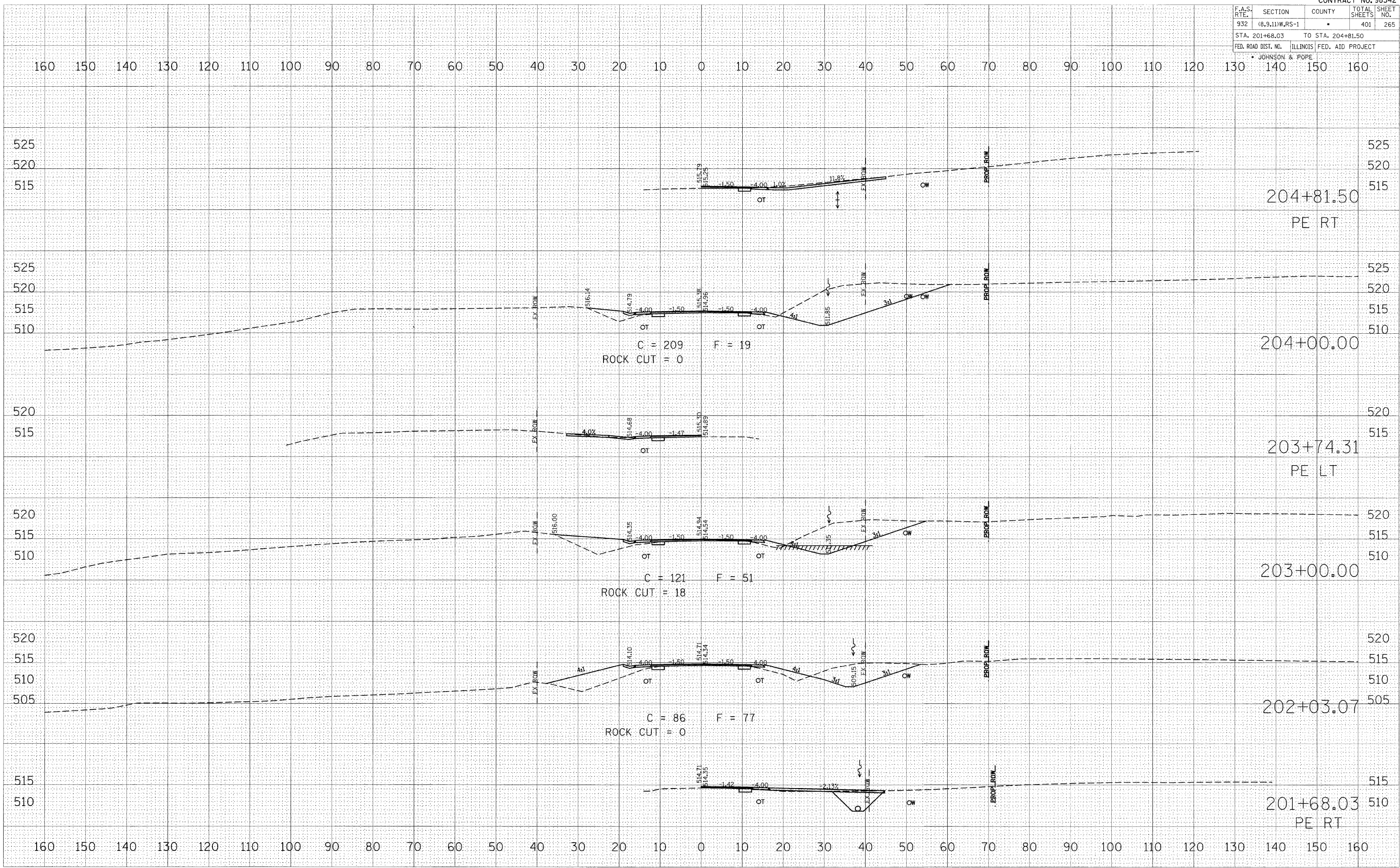


F.A.S. RTE.	SECTION	COUNTY	TOTAL SHEETS	SHEET NO.
932	(6,9,11)W,RS-1	*	401	265
STA. 201+68.03		TO STA. 204+81.50		
FED. ROAD DIST. NO.		ILLINOIS FED. AID PROJECT		
* JOHNSON & POPE				



BY	DATE

BY	DATE

ORIGINAL SURVEY	DATE

ORIGINAL SURVEY	DATE