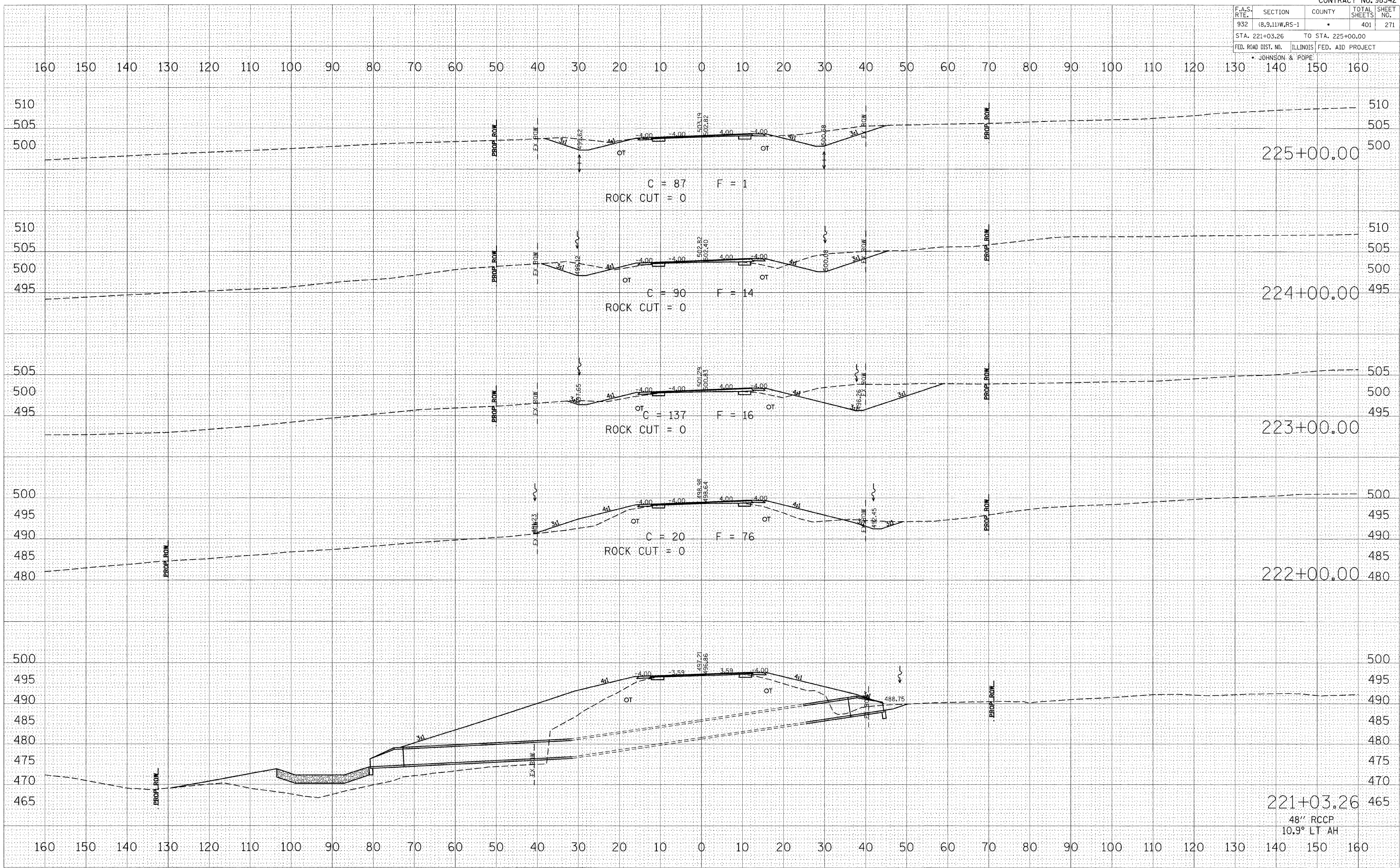


F.A.S. RTE.	SECTION	COUNTY	TOTAL SHEETS	SHEET NO.
932	(8,9,11)W,RS-1	*	401	271
STA. 221+03.26		TO STA. 225+00.00		
FED. ROAD DIST. NO.		ILLINOIS FED. AID PROJECT		
* JOHNSON & POPE				



DATE	
BY	
FINAL SURVEY	
FLIPPED	
TEMPLATE	
NOTE BOOK	
AREAS CHECKED	
NO.	

DATE	
BY	
ORIGINAL SURVEY	
FLIPPED	
TEMPLATE	
NOTE BOOK	
AREAS CHECKED	
NO.	

DATE	
BY	
SCALE	
USER NAME	