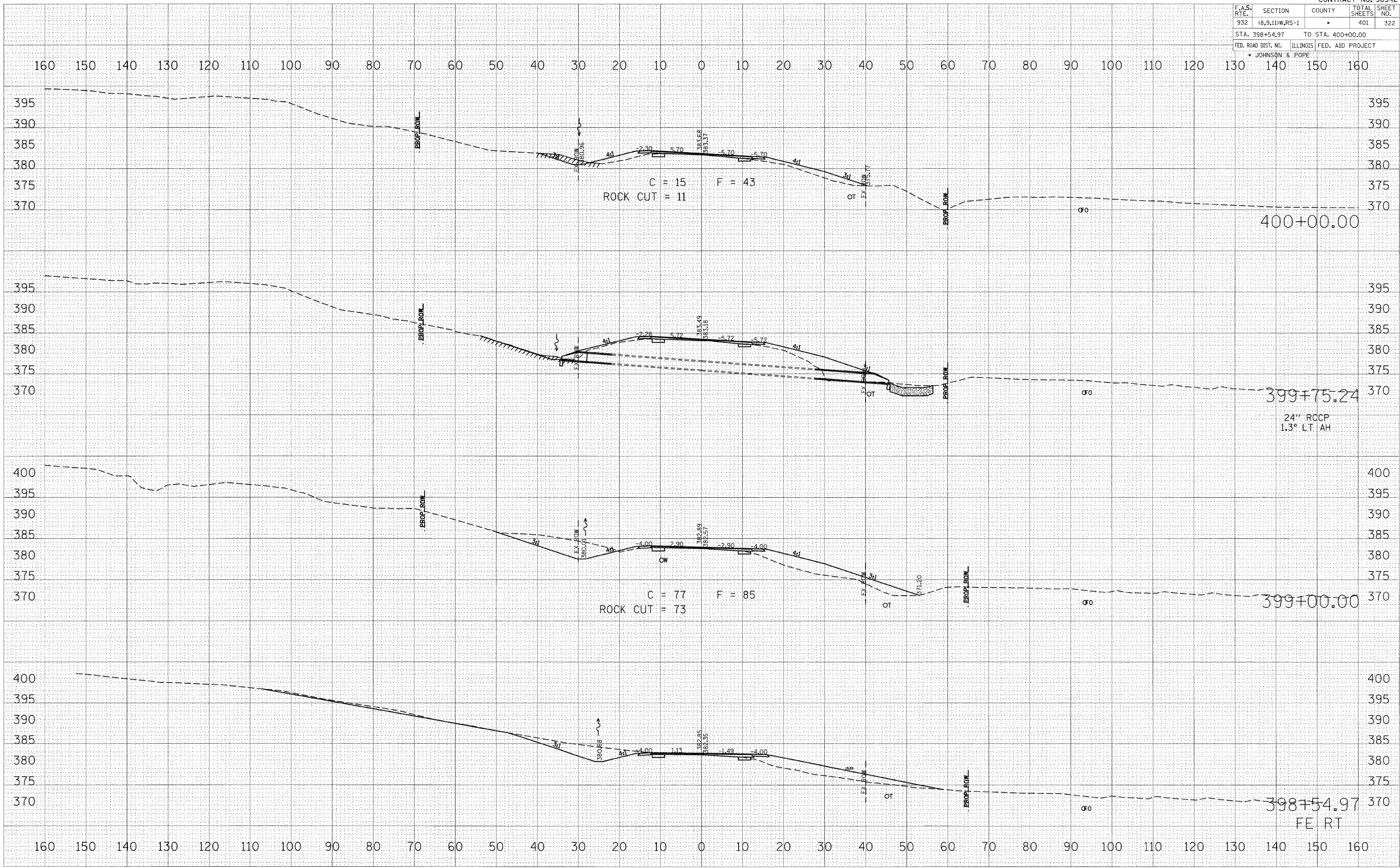


F.A.S. RTE.	SECTION	COUNTY	TOTAL SHEETS	SHEET NO.
932	(8,9,11)W,RS-1	*	401	322
STA. 398+54.97			TO STA. 400+00.00	
FED. ROAD DIST. NO. ILLINOIS FED. AID PROJECT				
* JOHNSON & POPE				



DATE	
BY	
FINAL SURVEYED	
SHEET PLOTTED	
NOTE BOOK	
TEMPLATE	
AREAS CHECKED	
NO.	

DATE	
BY	
ORIGINAL SURVEYED	
SHEET PLOTTED	
NOTE BOOK	
TEMPLATE	
AREAS CHECKED	
NO.	

DATE	
BY	
SCALE	
USER	

24" RCCP
1.3° LT. AH

FE RT