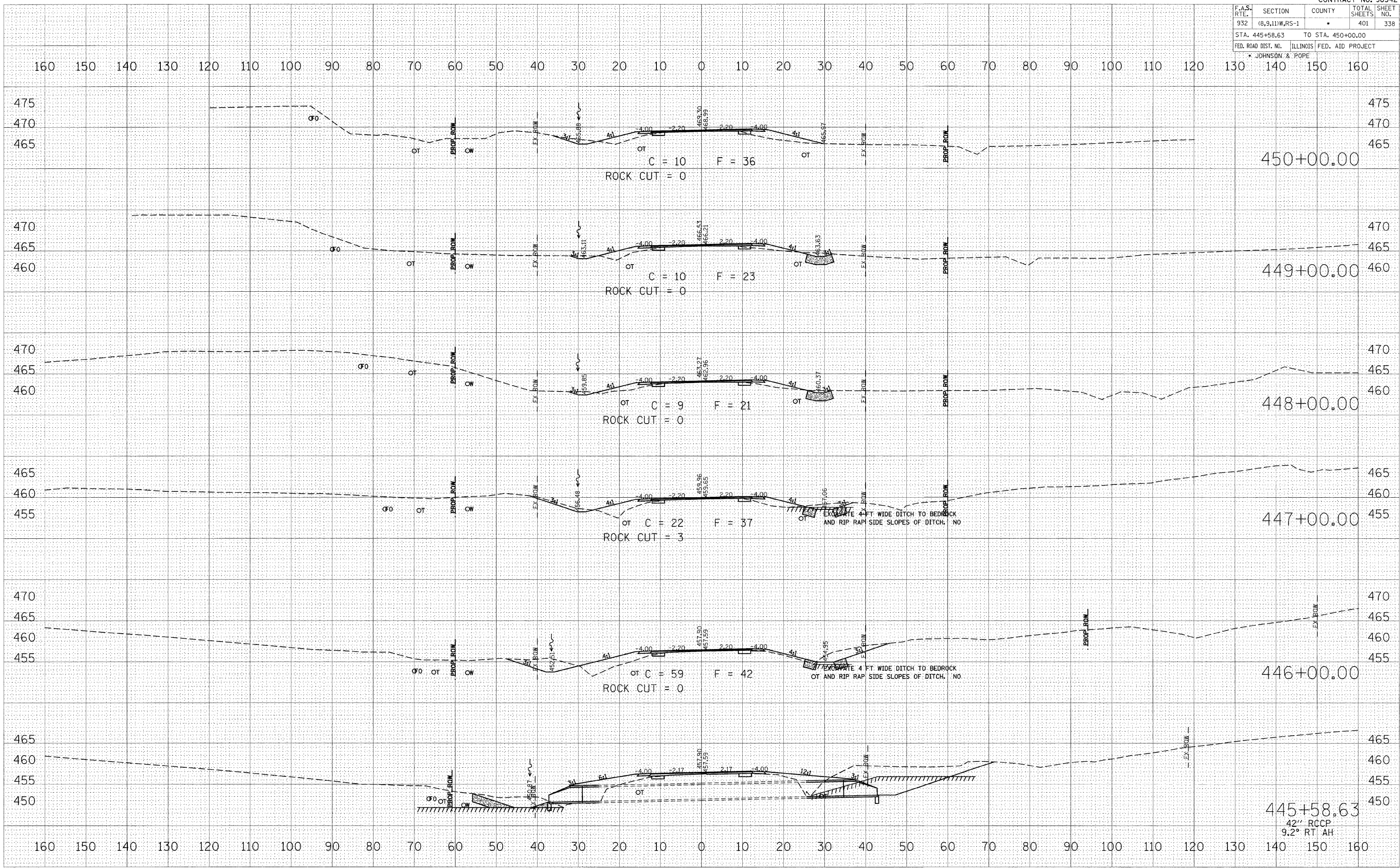


F.A.S. RTE.	SECTION	COUNTY	TOTAL SHEETS	SHEET NO.
932	(6,9,11)W,RS-1	*	401	338
STA. 445+58.63		TO STA. 450+00.00		
FED. ROAD DIST. NO.		ILLINOIS FED. AID PROJECT		
* JOHNSON & POPE				

BY	DATE

BY	DATE

PLOT DATE	# DATES



445+58.63
42" RCCP
9.2° RT AH