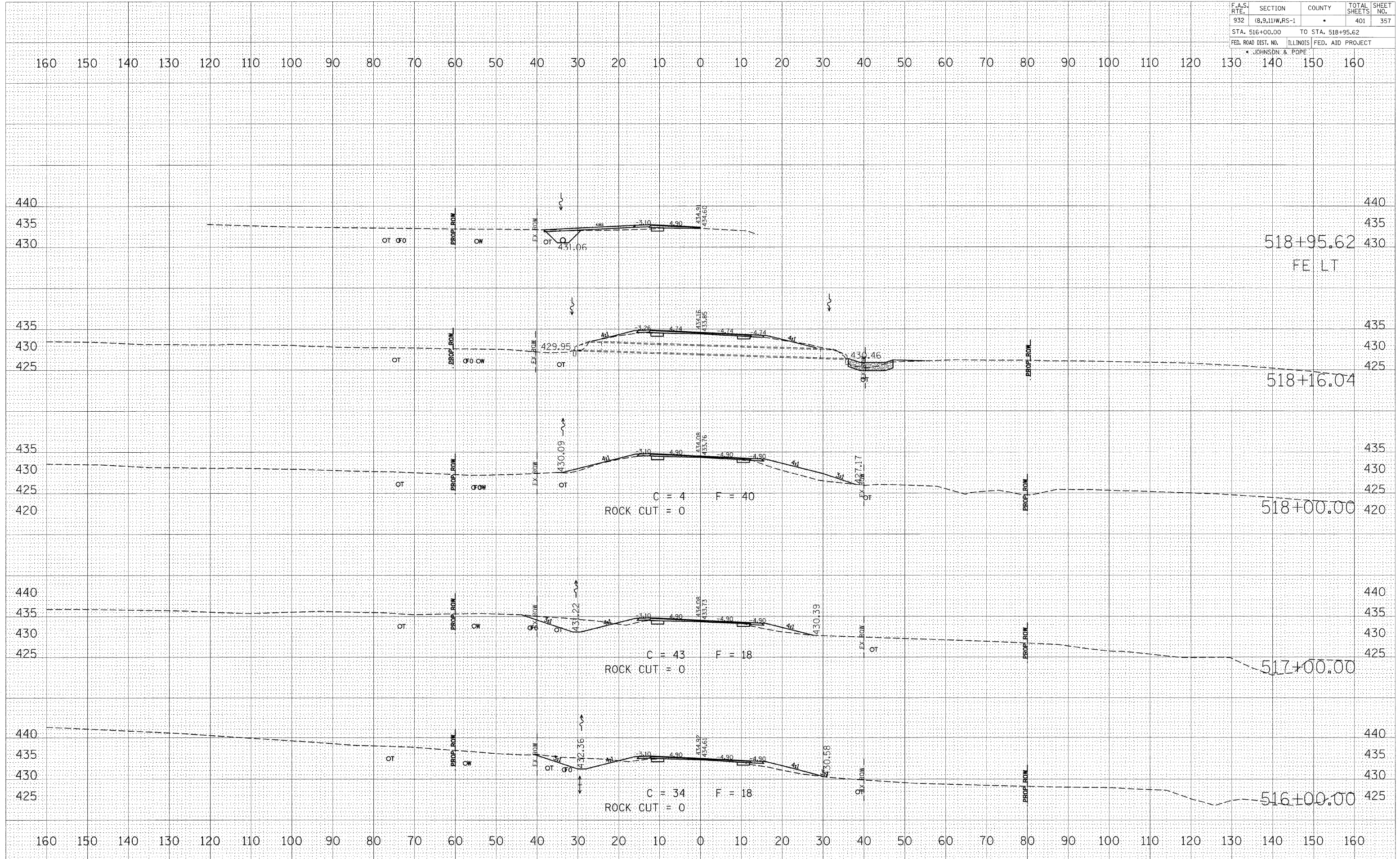


F.A.S. RTE.	SECTION	COUNTY	TOTAL SHEETS	SHEET NO.
932	(8,9,11)W,RS-1	•	401	357
STA. 516+00.00		TO STA. 518+95.62		
FED. ROAD DIST. NO.		ILLINOIS FED. AID PROJECT		
• JOHNSON & POPE				



FINAL SURVEY	CHECKED	DATE
NOTE BOOK	PLOTTED	
NO.	TEMPLATE	
	AREAS	
	CHECKED	

ORIGINAL SURVEY	CHECKED	DATE
NOTE BOOK	PLOTTED	
NO.	TEMPLATE	
	AREAS	
	CHECKED	

PLOT DATE = #DATE#
FILE NAME = #FILE#
PLOT SCALE = #SCALE#
USER NAME = #USER#