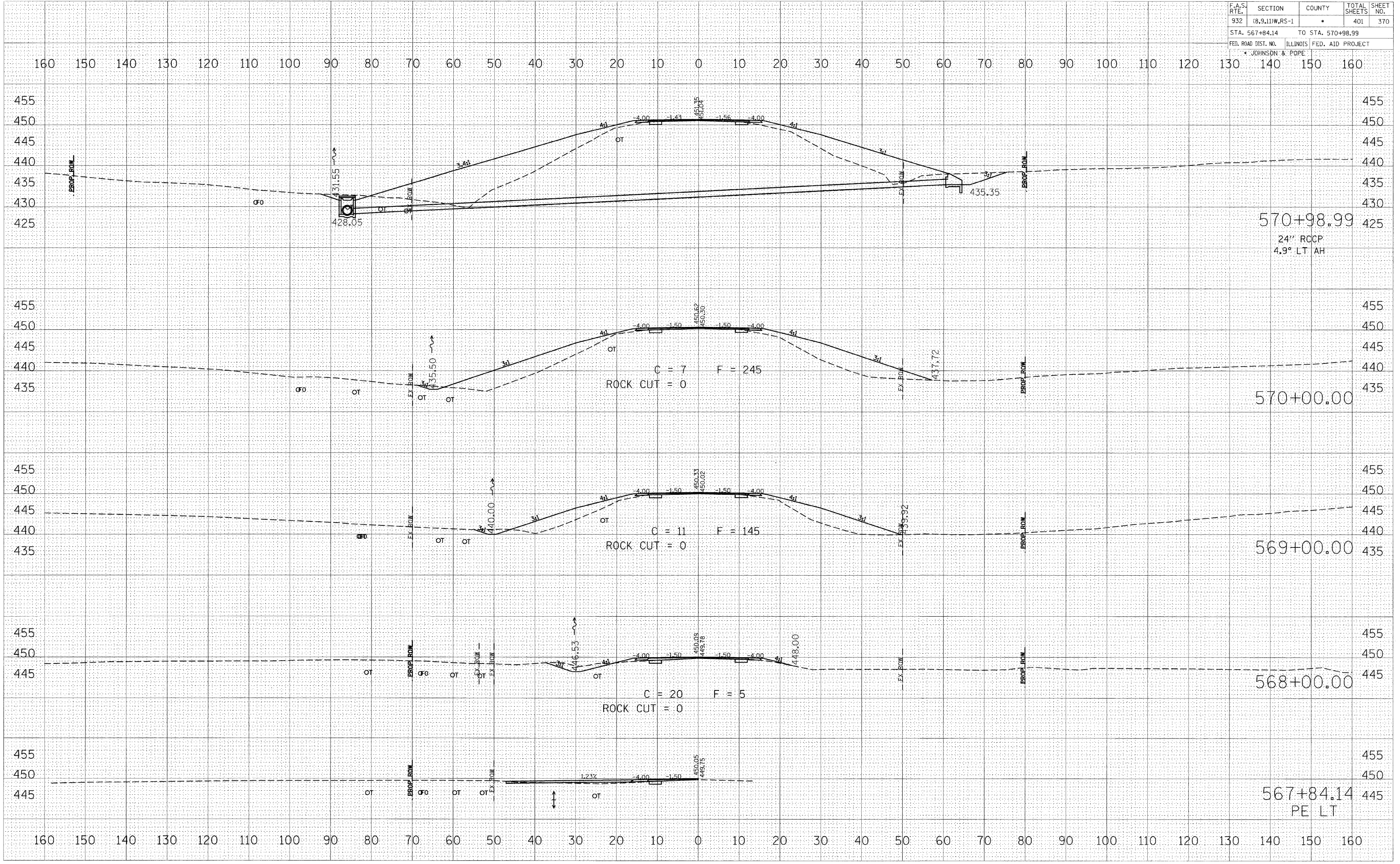


F.A.S. RTE.	SECTION	COUNTY	TOTAL SHEETS	SHEET NO.
932	(8,9,11)W,RS-1	*	401	370
STA. 567+84.14		TO STA. 570+98.99		
FED. ROAD DIST. NO.		ILLINOIS FED. AID PROJECT		
* JOHNSON & POPE				



BY: _____ DATE: _____
 SURVEYED _____
 PLOTTED _____
 TEMPLATE _____
 NO. _____

BY: _____ DATE: _____
 SURVEYED _____
 PLOTTED _____
 TEMPLATE _____
 NO. _____

BY: _____ DATE: _____
 SURVEYED _____
 PLOTTED _____
 TEMPLATE _____
 NO. _____

BY: _____ DATE: _____
 SURVEYED _____
 PLOTTED _____
 TEMPLATE _____
 NO. _____