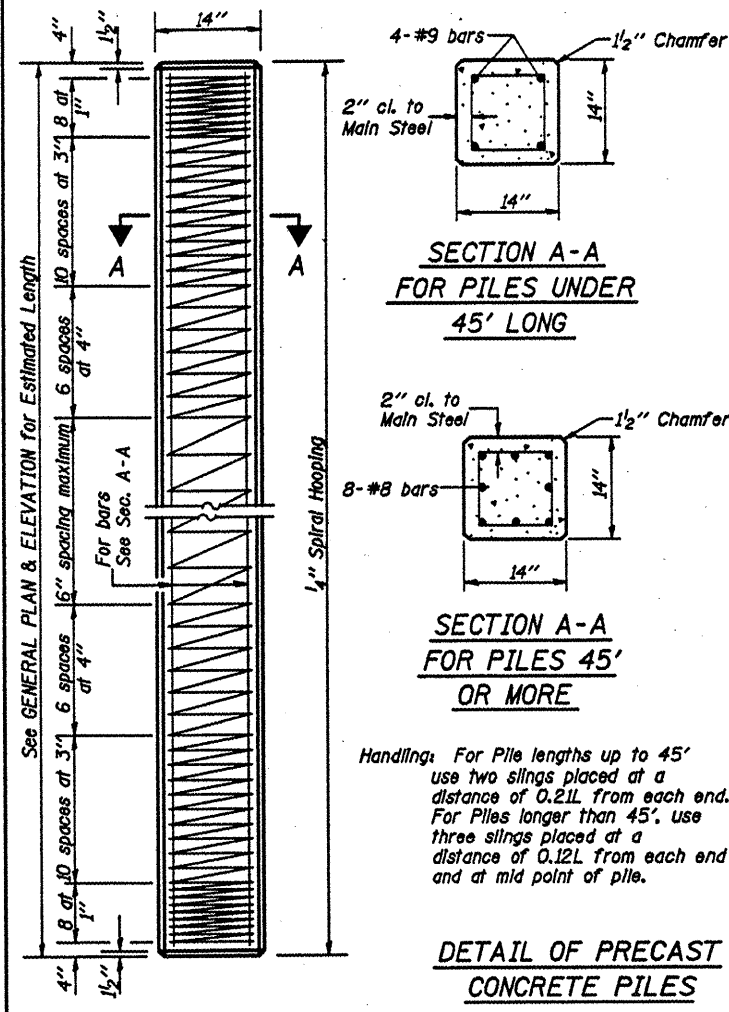
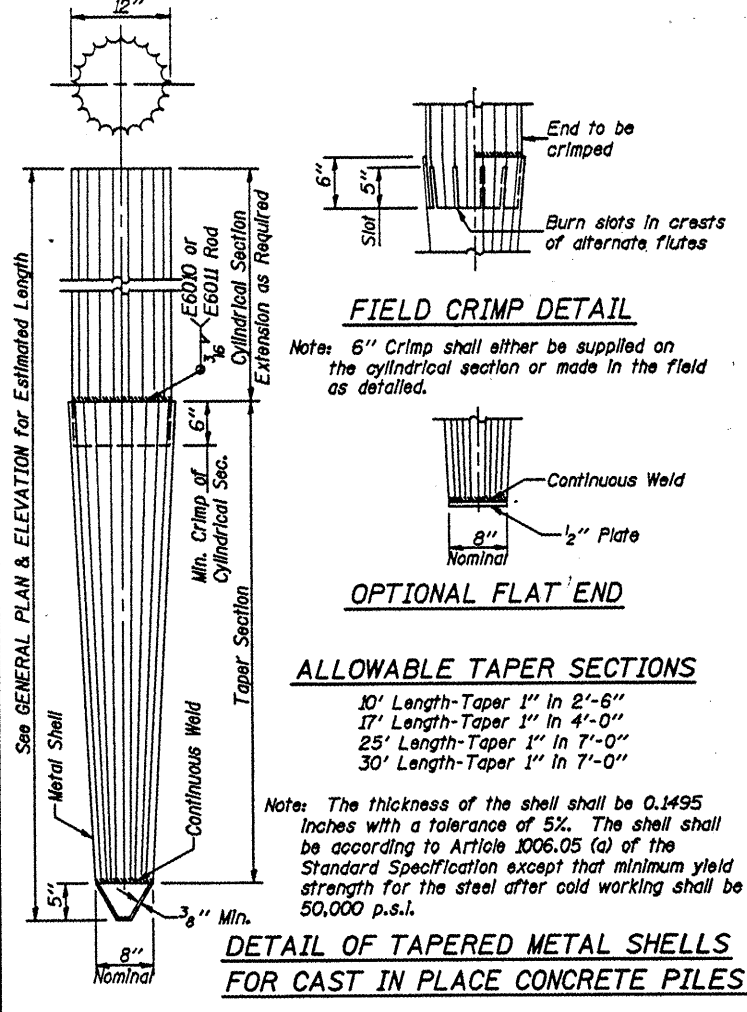


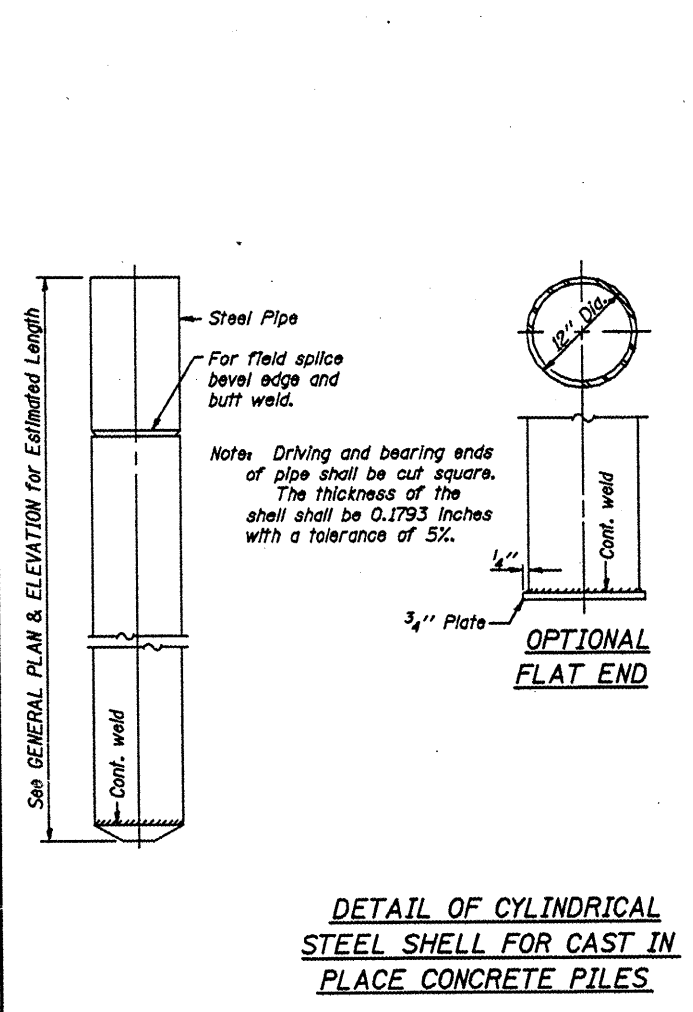
ROUTE	SECTION	COUNTY	TOTAL SHEETS	SHEET NO.
TR 265	04-01181-00-BR	UNION	10	9
PROJECT NO. BROS-181(25)		CONTRACT NO. 99316		



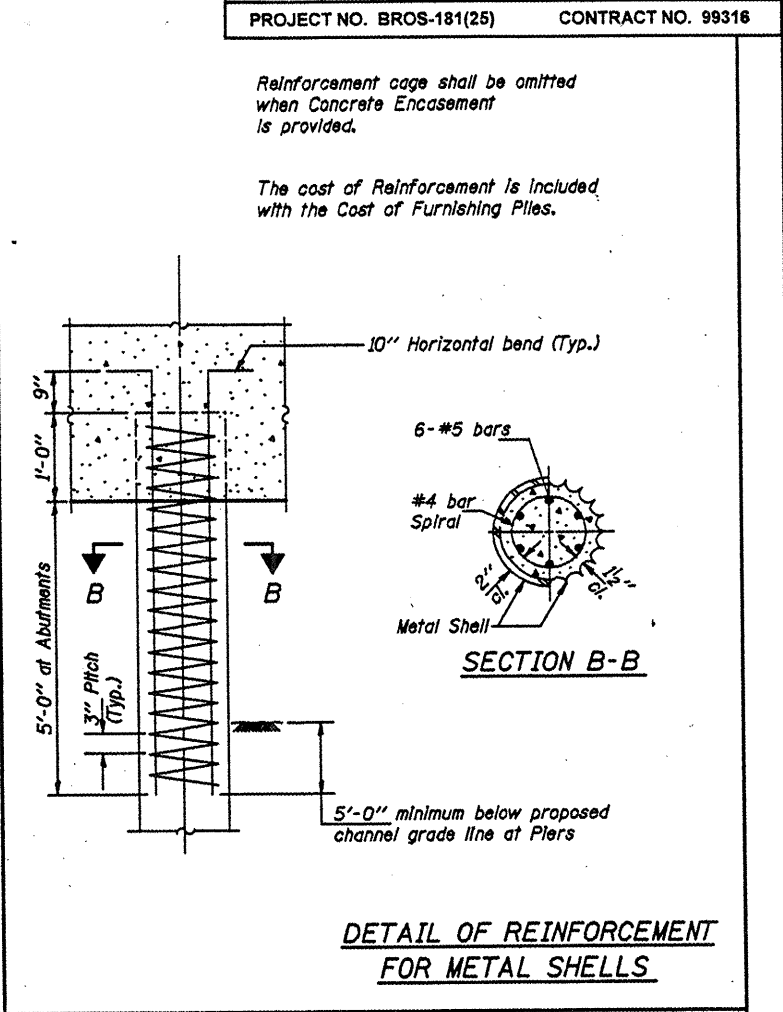
**DETAIL OF PRECAST CONCRETE PILES**



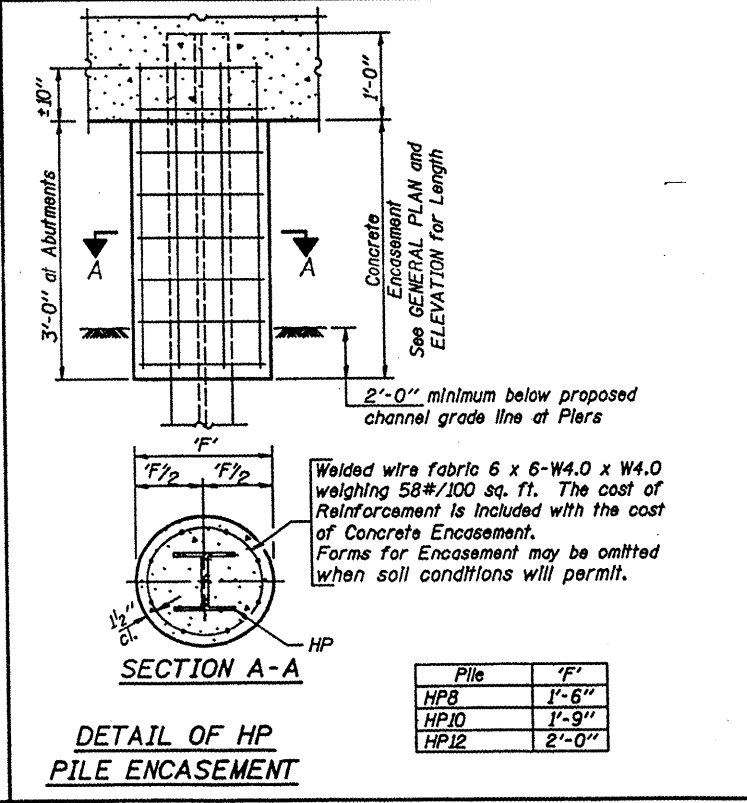
**DETAIL OF TAPERED METAL SHELLS FOR CAST IN PLACE CONCRETE PILES**



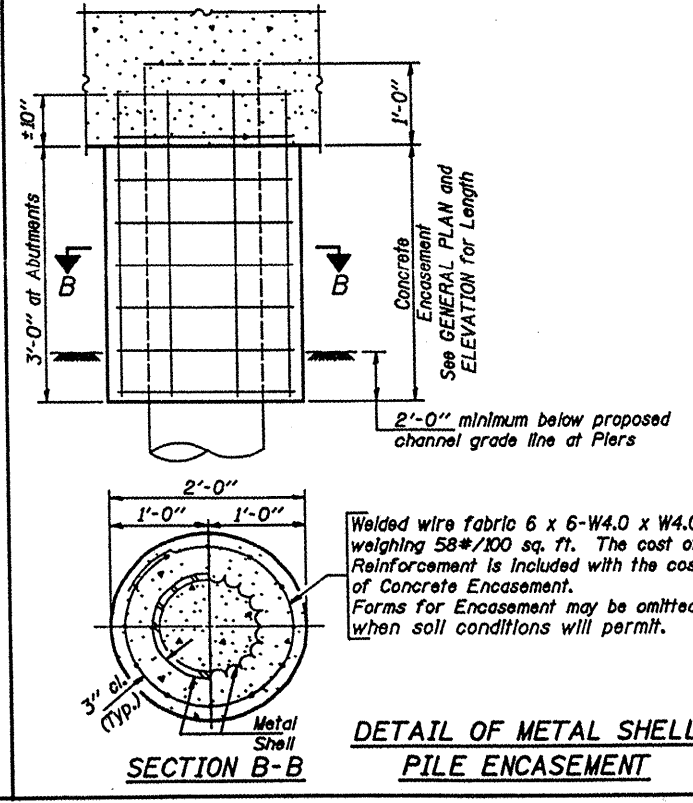
**DETAIL OF CYLINDRICAL STEEL SHELL FOR CAST IN PLACE CONCRETE PILES**



**DETAIL OF REINFORCEMENT FOR METAL SHELLS**



Pile	'F'
HP8	1'-6"
HP10	1'-9"
HP12	2'-0"



**QUANTITIES/FT. OF ENCASEMENT (STEEL PILES)**

Pile Size	Item	Quantity
HP8	Concrete Encasement	0.063 C.Y.
HP10	Concrete Encasement	0.086 C.Y.
HP12	Concrete Encasement	0.112 C.Y.

**(METAL SHELL PILES)**

Pile Size	Item	Quantity
12" Dia.	Concrete Encasement	0.087 C.Y.

<b>PILE DETAILS</b>	
<b>STANDARD CX-1</b>	

Illinois Department of Transportation  
 PASSED FEBRUARY 1, 2000  
 (Theresa J. Vassallo)  
 Engineer of Bridge Design  
 APPROVED FEBRUARY 1, 2000  
 (Robert E. Anderson)  
 Engineer of Bridges and Structures