

STATE OF ILLINOIS
DEPARTMENT OF TRANSPORTATION
**PROPOSED
HIGHWAY PLANS**

F.A.I. RTE.	SECTION	COUNTY	TOTAL SHEETS	SHEET NO.
57	(28-2-1)(I-3)RA	FRANKLIN	11	1
		ILLINOIS	CONTRACT NO. 78994	

FOR INDEX OF SHEETS, SEE SHEET NO. 3

FOR SUMMARY OF QUANTITIES, SEE SHEET NO. 4-5

TRAFFIC DATA

2024 ADT = 34,300
SU % = 4%
MU % = 45%

TOWNSHIPS

BENTON

DESIGN DESIGNATION : INTERSTATE

COORDINATE SYSTEM : ILLINOIS COORDINATE SYSTEM, WEST ZONE

POSTED SPEED : 70 MPH

ALL ELEVATIONS IN THE PLANS ARE BASED UPON THE NORTH AMERICAN VERTICAL DATUM OF 1988 (NAVD88)

PLANS PREPARED BY:



4940 Old Collinsville Road
Swansea, Illinois 62226
Tel: 618.624.4488
www.twm-inc.com
ILLINOIS • MISSOURI • TENNESSEE

Illinois Professional Design Firm
No. 184-001220
License Expires: 04/30/2023

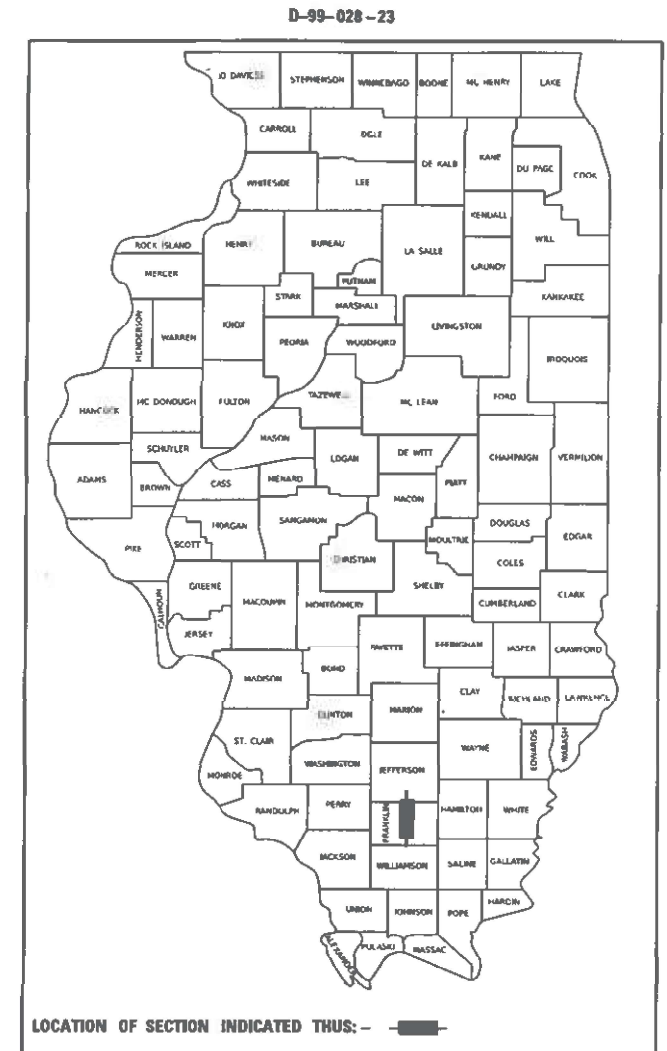
J.U.L.I.E.
JOINT UTILITY LOCATION INFORMATION FOR EXCAVATION
1-800-892-0123
OR 811

PROJECT ENGINEER: EHREN KIRBY

CONTRACT NO. 78994

F.A.I. ROUTE 57 (I-57)
SECTION (28-2-1)(I-3)RA
NB REND LAKE REST AREA SANITARY
SEWER FORCED MAIN REPAIR
FRANKLIN COUNTY

C-99-041-23



STATE OF ILLINOIS
DEPARTMENT OF TRANSPORTATION

SUBMITTED August 27 2025
Lora S. Reinman
REGION FIVE ENGINEER

October 3 2025
Scott E. [Signature]
ENGINEER OF DESIGN AND ENVIRONMENT

October 3 2025
[Signature]
DIRECTOR OF HIGHWAYS PROJECT IMPLEMENTATION



Timothy B. Padgett
TIMOTHY B. PADGETT, PE EXPIRATION DATE
LICENSE NO. 062-049162 11-30-2025

PRINTED BY THE AUTHORITY
OF THE STATE OF ILLINOIS

MODEL: Default
FILE NAME: P:\2021\10993D - Enns Lake Rest Area - Forred Main - Regional CADD - DWG\4.7 TranCADD Sheets\0978962.dwg
User: JCL



TWM, INC.
www.twm-inc.com
ILLINOIS DESIGN FIRM
LICENSE NO:
184-001220

USER NAME	= dlee
PLOT SCALE	= 40.0000" / 1"
PLOT DATE	= 8/13/2025

DESIGNED	= JCL
DRAWN	= JCL
CHECKED	= TBP
DATE	= DEC 2022

REVISED	=
REVISED	=
REVISED	=
REVISED	=

**STATE OF ILLINOIS
DEPARTMENT OF TRANSPORTATION**

SIGNATURE SHEET

SCALE: SHEET 1 OF 1 SHEETS STA. TO STA.

F.A.I. RTE.	SECTION	COUNTY	TOTAL SHEETS	SHEET NO.
57	(28-2-1)(I-3)RA	FRANKLIN	11	2
CONTRACT NO. 78994				
ILLINOIS FED. AID PROJECT				

Prepared By: *Susan Poe*
DISTRICT STUDIES & PLANS ENGINEER

Examined By: *Nancy Heil HPT*
DISTRICT LAND ACQUISITION ENGINEER

Examined By: *Carrie Nelson*
DISTRICT PROGRAM DEVELOPMENT ENGINEER

Examined By: *[Signature]*
DISTRICT OPERATIONS ENGINEER

Examined By: _____
DISTRICT PROJECT IMPLEMENTATION ENGINEER

Examined By: *Bernard*
DISTRICT CONSTRUCTION ENGINEER

Examined By: *Aam Wang*
DISTRICT MATERIALS ENGINEER

GENERAL NOTES

1. THE DISTRICT SHALL NOTIFY THE REST AREA VENDORS AND WORKSHOPS 30 DAYS IN ADVANCE OF THE PLANNED NB REND LAKE REST AREA CLOSURE DATE.
2. TWO CHANGEABLE MESSAGE SIGNS ARE PROVIDED ON THIS PROJECT. ONE FOR THE NB REND LAKE REST AREA CLOSURE AND ONE FOR THE DAILY SB FAI 57 LANE CLOSURES. CHANGEABLE MESSAGE SIGNS WILL BE PLACED PER THE ENGINEER. SEE SPECIAL PROVISIONS.
3. SEE SPECIAL PROVISIONS ABOUT THE CLOSURE OF NB REND LAKE REST AREA.
4. THE SB REND LAKE REST AREA SHALL REMAIN OPEN AT ALL TIMES.

COMMITMENTS

1. DUE TO THE POTENTIAL PRESENCE OF THE INDIANA BAT AND NORTHERN LONG-EARED BAT, TREE REMOVAL SHALL BE PROHIBITED FROM APRIL 1 THORUGH SEPTEMBER 30.
2. NO OTHER COMMITMENTS

INDEX OF SHEETS

- 1 COVER SHEET
- 2 SIGNATURE SHEET
- 3 GENERAL NOTES, INDEX OF SHEETS, HIGHWAY STANDARDS & COMMITMENTS
- 4-5 SUMMARY OF QUANTITIES
- 6 SCHEDULE OF QUANTITIES
- 7 LOCATION MAP
- 8 NORTH CULVERT EROSION REPAIR
- 9 SOUTH CULVERT EROSION REPAIR
- 10 TREE REMOVAL/SEEDING SHEET
- 11 DISTRICT 9 STANDARDS - SEEDING & MULCHING

HIGHWAY STANDARDS

- | | |
|-----------|--|
| 000001-08 | STANDARD SYMBOLS, ABBREVIATIONS AND PATTERNS |
| 001006 | DECIMAL OF AN INCH AND OF A FOOT |
| 280001-07 | TEMPORARY EROSION CONTROL SYSTEMS |
| 665001-02 | WOVEN WIRE FENCE |
| 701101-05 | OFF-RD OPERATIONS, MULTINELANE, 15' (4.5m) TO 24" (600mm) FROM PAVEMENT EDGE |
| 701106-02 | OFF-RD OPERATIONS, MULTILANE, MORE THAN 15' (4.5m) AWAY |
| 701400-12 | APPROACH TO LANE CLOSURE, FREEWAY/EXPRESSWAY |
| 701406-13 | LANE CLOSURE, FREEWAY/EXPRESSWAY, DAY OPERATIONS ONLY |
| 701428-01 | TRAFFIC CONTROL SETUP AND REMOVAL FREEWAY/EXPRESSWAY |
| 701451-05 | RAMP CLOSURE FREEWAY/EXPRESSWAY |
| 701901-10 | TRAFFIC CONTROL DEVICES |

**STATE OF ILLINOIS
DEPARTMENT OF TRANSPORTATION**

**GENERAL NOTES, INDEX OF SHEETS,
HIGHWAY STANDARDS & COMMITMENTS**

F.A.I. RTE.	SECTION	COUNTY	TOTAL SHEETS	SHEET NO.
57	(28-2-1)(I-3)RA	FRANKLIN	11	3
			CONTRACT NO. 78994	
		ILLINOIS	FED. AID PROJECT	

SCALE: SHEET 1 OF 1 SHEETS STA. TO STA.



TWM, INC.
www.twm-inc.com
IL DESIGN FIRM
LICENSE NO:
184-001220

USER NAME = dllee	DESIGNED - JCL	REVISED -
	DRAWN - JCL	REVISED -
PLOT SCALE = 100,0000 ' / in.	CHECKED - TBP	REVISED -
PLOT DATE = 8/13/2025	DATE - DEC 2022	REVISED -

0044

ROUTE:	FAI 57 (I-57)
COUNTY:	FRANKLIN
FUNDING:	100% STATE
LOCATION:	RURAL

CODE NO.	PAY ITEM	UNIT	TOTAL QUANTITY	OTHER
				0044
20100500	TREE REMOVAL, ACRES	ACRE	0.25	0.25
20700110	POROUS GRANULAR EMBANKMENT	TON	76	76
20800150	TRENCH BACKFILL	CU YD	5	5
25000200	SEEDING, CLASS 2	ACRE	0.20	0.20
25000400	NITROGEN FERTILIZER NUTRIENT	POUND	18.4	18.4
25000500	PHOSPHORUS FERTILIZER NUTRIENT	POUND	18.4	18.4
25000600	POTASSIUM FERTILIZER NUTRIENT	POUND	18.4	18.4
25000700	AGRICULTURAL GROUND LIMESTONE	TON	0.40	0.40
25100115	MULCH, METHOD 2	ACRE	0.20	0.20
28000400	PERIMETER EROSION BARRIER	FOOT	291	291
28100207	STONE RIPRAP, CLASS A4	TON	235	235
28200200	FILTER FABRIC	SQ YD	352	352
59300100	CONTROLLED LOW-STRENGTH MATERIAL	CU YD	18.0	18.0

REV - MS

MODEL: Default
FILE NAME: P:\2021\12\05\53\1D - Rend Lake Rest Area - Forcett Main Repair\1d CADP - DWG\17 Tran\CADD Sheets\078994-111-500.dgn



USER NAME = dllee	DESIGNED - JCL	REVISED -
PLOT SCALE = 1" = 40'	DRAWN - JCL	REVISED -
PLOT DATE = 8/13/2025	CHECKED - TBP	REVISED -
	DATE - DEC 2022	REVISED -

**STATE OF ILLINOIS
DEPARTMENT OF TRANSPORTATION**

SUMMARY OF QUANTITIES

SCALE: N.T.S. SHEET 1 OF 2 SHEETS STA. TO STA.

F.A.I. RTE.	SECTION	COUNTY	TOTAL SHEETS	SHEET NO.
57	(28-2-1)(I-3)RA	FRANKLIN	11	4
			CONTRACT NO. 78994	
		ILLINOIS	FED. AID PROJECT	

0044

ROUTE:	FAI 57 (I-57)
COUNTY:	FRANKLIN
FUNDING:	100% STATE
LOCATION:	RURAL

CODE NO.	PAY ITEM	UNIT	TOTAL QUANTITY	OTHER
66500105	WOVEN WIRE FENCE, 4'	FOOT	261	261
67100100	MOBILIZATION	L SUM	1	1
70100700	TRAFFIC CONTROL AND PROTECTION, STANDARD 701406	L SUM	1	1
70100820	TRAFFIC CONTROL AND PROTECTION, STANDARD 701451	L SUM	1	1
70107025	CHANGEABLE MESSAGE SIGNS	CAL DA	44	44
X5630213	ADJUSTING SANITARY SEWER SERVICE LINE	EACH	1	1
X6650202	WOVEN WIRE FENCE REMOVAL	FOOT	145	145

REV - MS

MODEL: Default
 FILE NAME: P:\2021\12\05\93\1D - Rend Lake Rest Area - Forcett Main Repair\14 CADD - DWG\14.7 Tran\CADD Sheets\078994-111-500.dgn



USER NAME = dllee	DESIGNED - JCL	REVISED -
PLOT SCALE = in.	DRAWN - JCL	REVISED -
PLOT DATE = 8/13/2025	CHECKED - TBP	REVISED -
	DATE - DEC 2022	REVISED -

**STATE OF ILLINOIS
DEPARTMENT OF TRANSPORTATION**

SUMMARY OF QUANTITIES

SCALE: N.T.S. SHEET 2 OF 2 SHEETS STA. TO STA.

F.A.I. RTE.	SECTION	COUNTY	TOTAL SHEETS	SHEET NO.
57	(28-2-1)(I-3)RA	FRANKLIN	11	5
			CONTRACT NO. 78994	
		ILLINOIS	FED. AID PROJECT	

SEEDING SCHEDULE						
LOCATION	SEEDING, CLASS 2	NITROGEN FERTILIZER NUTRIENT	PHOSPHORUS FERTILIZER NUTRIENT	POTASSIUM FERTILIZER NUTRIENT	AGRICULTURAL GROUND LIMESTONE	MULCH, METHOD 2
	ACRE	POUND	POUND	POUND	TON	ACRE
I-57 SB						
NORTH CULVERT	0.11	10.2	10.2	10.2	0.20	0.11
SOUTH CULVERT	0.09	8.2	8.2	8.2	0.20	0.09
TOTAL :	0.20	18.4	18.4	18.4	0.40	0.20
PAY TOTAL :	0.20	18.4	18.4	18.4	0.40	0.20

RIPRAP SCHEDULE		
LOCATION	STONE RIPRAP, CLASS A4	FILTER FABRIC
	TON	SQ YD
I-57 SB		
NORTH CULVERT	130	195
SOUTH CULVERT	105	157
TOTAL :	235	352

PERIMETER EROSION BARRIER SCHEDULE	
LOCATION	PERIMETER EROSION BARRIER
	FOOT
I-57 SB	
NORTH CULVERT	151.0
SOUTH CULVERT	140.0
TOTAL :	291

FENCE SCHEDULE		
LOCATION	WOVEN WIRE FENCE, 4'	WOVEN WIRE FENCE REMOVAL
	FOOT	FOOT
I-57 SB		
NORTH CULVERT	116.0	100.0
SOUTH CULVERT	145.0	45.0
TOTAL :	261	145

DITCH GRADING SCHEDULE		
LOCATION	POROUS GRANULAR EMBANKMENT	CONTROLLED LOW-STRENGTH MATERIAL
	TON	CU YD
I-57 SB		
SOUTH CULVERT	76.0	17.6
TOTAL :	76.0	17.6
PAY TOTAL :	76	18.0

TREE REMOVAL SCHEDULE	
LOCATION	TREE REMOVAL, ACRES
	ACRE
I-57 SB	
NORTH CULVERT	0.06
SOUTH CULVERT	0.07
TOTAL :	0.13
PAY TOTAL :	0.25

ADJUSTING SANITARY SEWER SCHEDULE		
LOCATION	ADJUSTING SANITARY SEWER SERVICE LINE	TRENCH BACKFILL
	EACH	CU YD
I-57 SB		
NORTH CULVERT	1	5.0
TOTAL :	1	5

MODEL: Default
 FILE NAME: P:\2021\12\05\93\1D - Rend Lake Rest Area - Forcett Main Repair\14 CADD - DWG\14.7 Tran\CADD Sheets\073965-shi-schedule.dwg

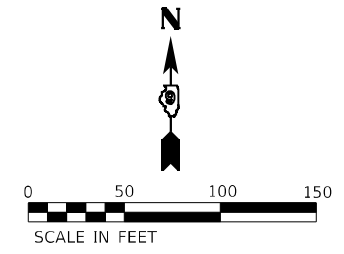


USER NAME = dllee	DESIGNED - JCL	REVISED -
PLOT SCALE = 2,000' / in.	DRAWN - JCL	REVISED -
PLOT DATE = 8/13/2025	CHECKED - TBP	REVISED -
	DATE - DEC 2022	REVISED -

**STATE OF ILLINOIS
DEPARTMENT OF TRANSPORTATION**

SCHEDULE OF QUANTITIES			
SCALE: NTS	SHEET 1	OF 1 SHEETS	STA. TO STA.

F.A.I. RTE.	SECTION	COUNTY	TOTAL SHEETS	SHEET NO.
57	(28-2-1)(I-3)RA	FRANKLIN	11	6
ILLINOIS FED. AID PROJECT			CONTRACT NO. 78994	



MODEL: Default
 FILE NAME: P:\2021\12\05\57\1D - Rend Lake Rest Area - Forced Main Repair\1d CAD - DWG\17 TranCAD - Sheets\078994-57\1d\locmap.dwg


TWM, INC.
 www.twm-inc.com
 IL DESIGN FIRM LICENSE NO: 184-001220

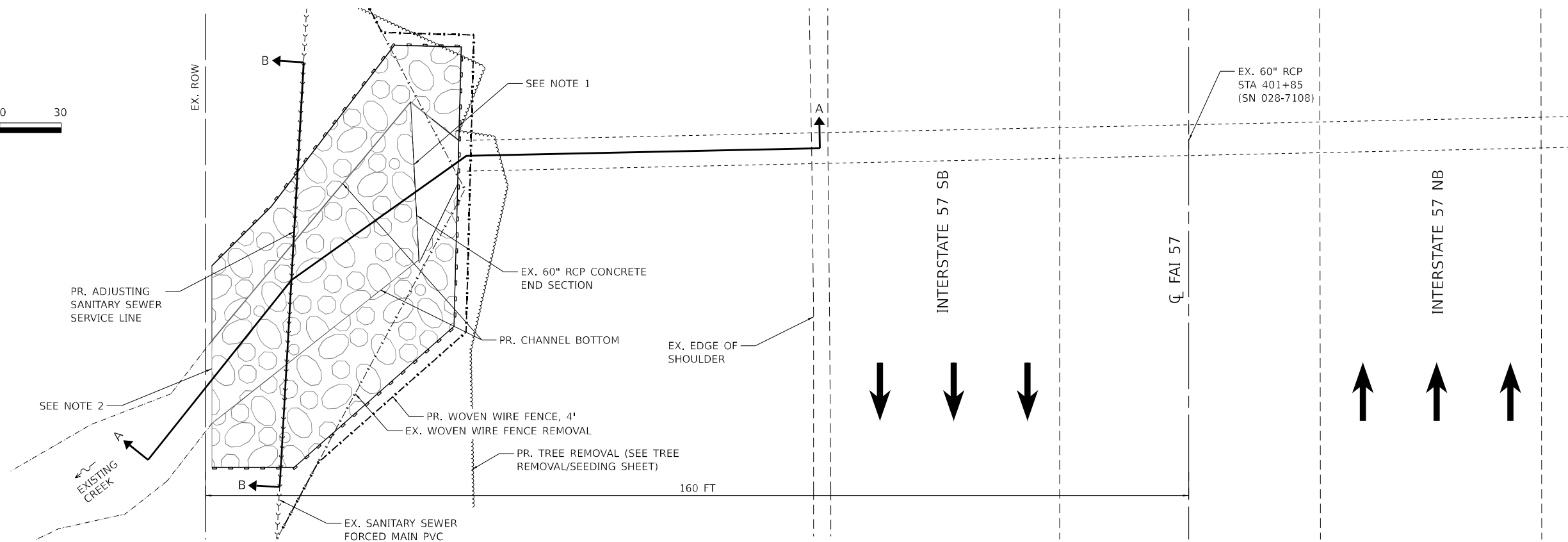
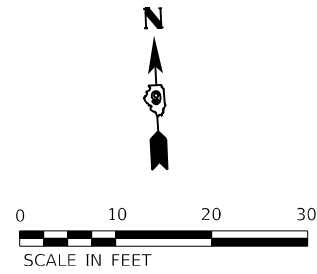
USER NAME = dllee	DESIGNED - JCL	REVISED -
	DRAWN - JCL	REVISED -
PLOT SCALE = 100,0000' / in.	CHECKED - TBP	REVISED -
PLOT DATE = 8/13/2025	DATE - DEC 2022	REVISED -

STATE OF ILLINOIS
DEPARTMENT OF TRANSPORTATION

LOCATION MAP

SCALE: SHEET 1 OF 1 SHEETS STA. TO STA.

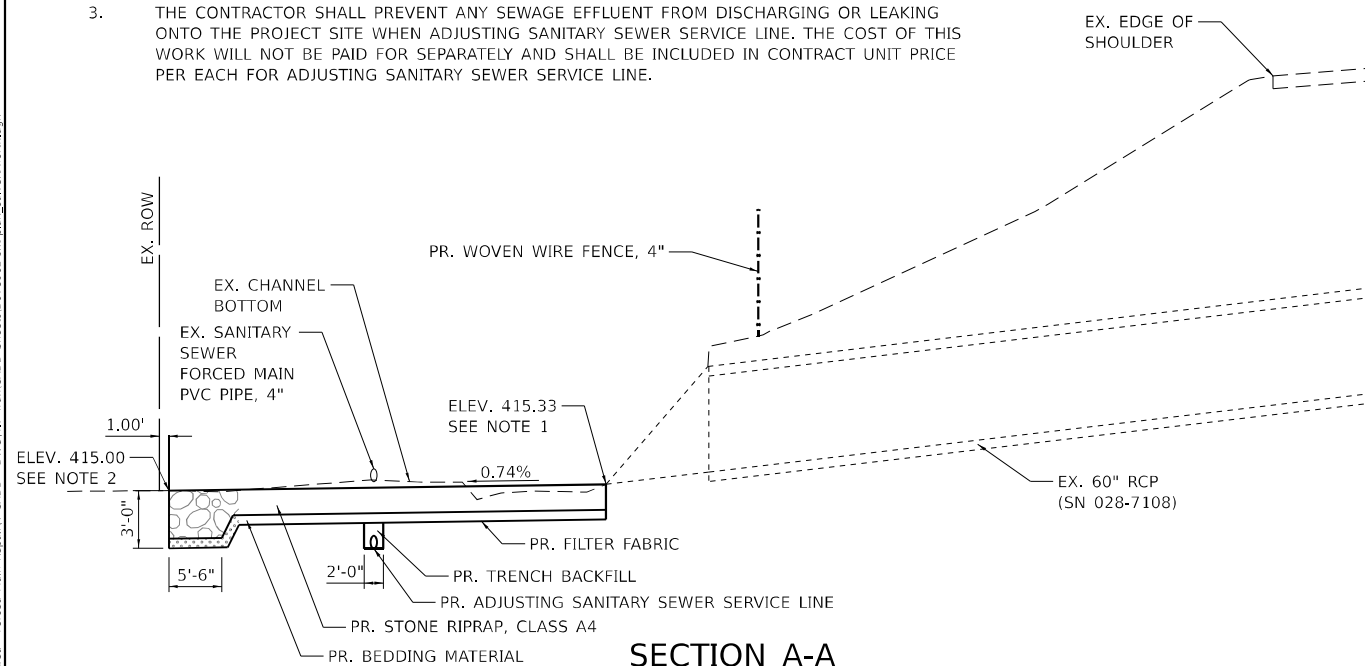
F.A.I. RTE.	SECTION	COUNTY	TOTAL SHEETS	SHEET NO.
57	(28-2-1)(I-3)RA	FRANKLIN	11	7
CONTRACT NO. 78994				
ILLINOIS FED. AID PROJECT				



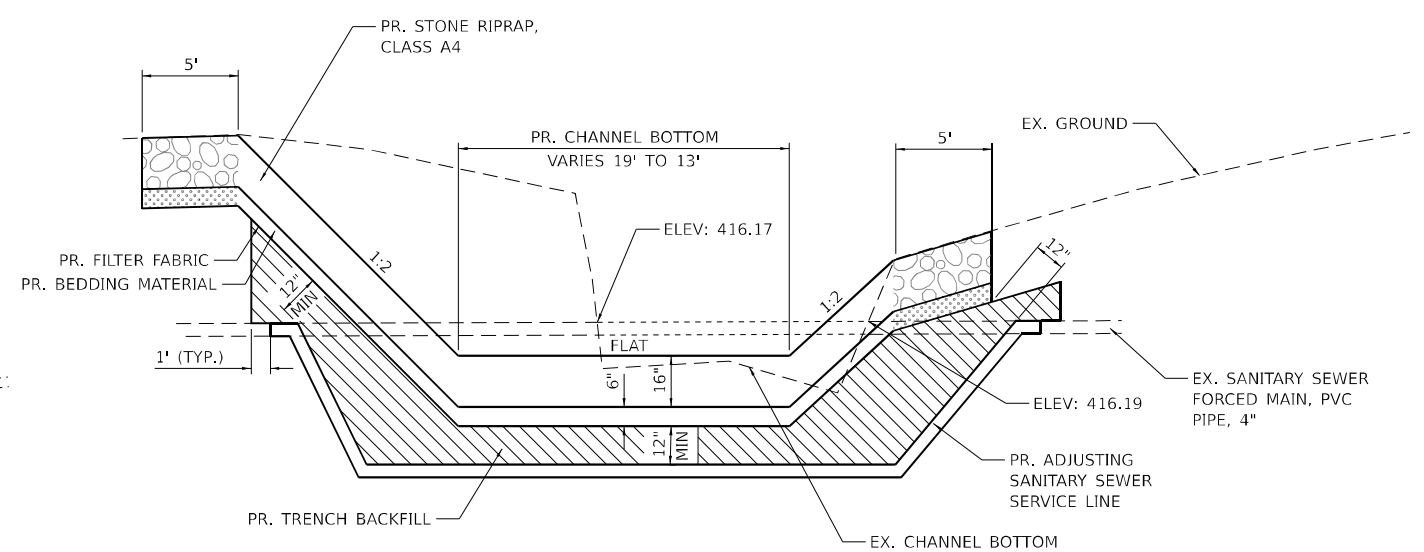
NOTES:

1. THE PROPOSED STONE RIPRAP CLASS A4 CHANNEL BOTTOM SHALL MATCH THE WIDTH AT THE EXISTING RCP CONCRETE END SECTION.
2. THE PROPOSED STONE RIPRAP CLASS A4 CHANNEL SHALL MATCH THE EXISTING CHANNEL.
3. THE CONTRACTOR SHALL PREVENT ANY SEWAGE EFFLUENT FROM DISCHARGING OR LEAKING ONTO THE PROJECT SITE WHEN ADJUSTING SANITARY SEWER SERVICE LINE. THE COST OF THIS WORK WILL NOT BE PAID FOR SEPARATELY AND SHALL BE INCLUDED IN CONTRACT UNIT PRICE PER EACH FOR ADJUSTING SANITARY SEWER SERVICE LINE.

PLAN VIEW



SECTION A-A
NTS



SECTION B-B
NTS

LEGEND

- SURVEYED EX SANITARY SEWER FORCED MAIN LOCATION
- ASSUMED EX SANITARY SEWER FORCED MAIN LOCATION
- PR. STONE RIPRAP, CLASS A4
- PR. BEDDING MATERIAL
- PR. TRENCH BACKFILL
- PR. PERIMETER EROSION BARRIER

**STATE OF ILLINOIS
DEPARTMENT OF TRANSPORTATION**

**PLAN SHEET
NORTH CULVERT EROSION REPAIR**

SCALE: SHEET 1 OF 1 SHEETS STA. TO STA.

F.A.I. RTE.	SECTION	COUNTY	TOTAL SHEETS	SHEET NO.
57	(28-2-1)(I-3)RA	FRANKLIN	11	8
CONTRACT NO. 78994				

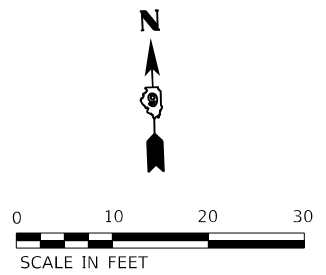
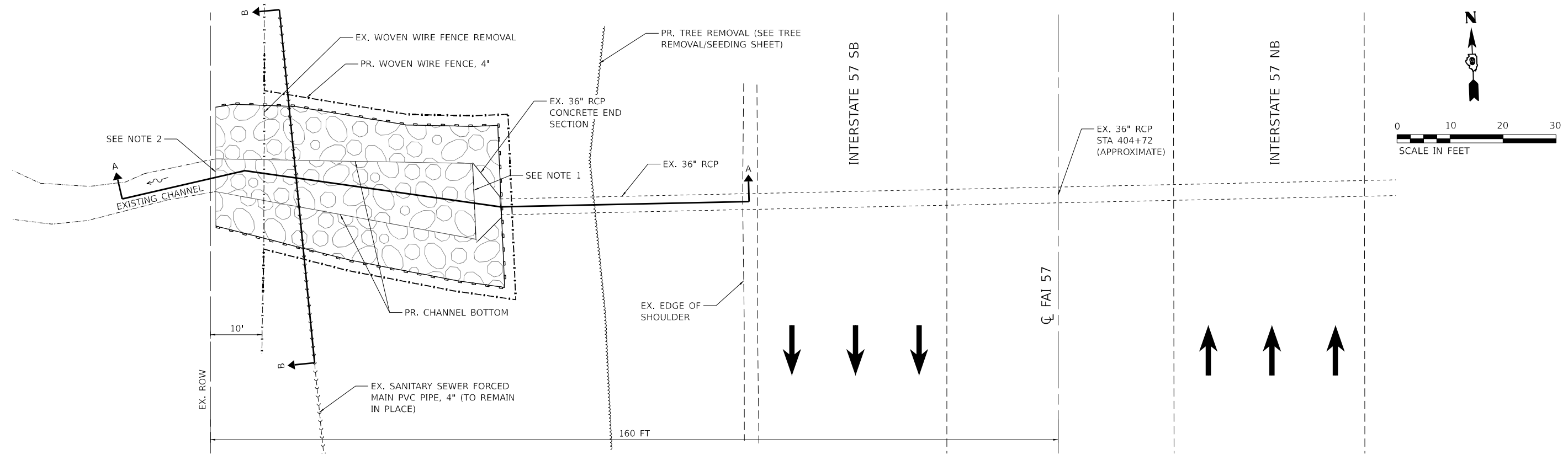
ILLINOIS FED. AID PROJECT

MODEL: Default
 FILE NAME: P:\2021\12\05\9310 - Rend Lake Rest Area - Forced Main Repair.dwg
 DWG: 12/05/2021 12:05:31
 USER: dllee
 PLOT SCALE = 20,0000 * / in.
 PLOT DATE = 8/13/2025

TWM
ENGINEERING
GEOSPATIAL SERVICES

TWM, INC.
www.twm-inc.com
IL DESIGN FIRM
LICENSE NO: 184-001220

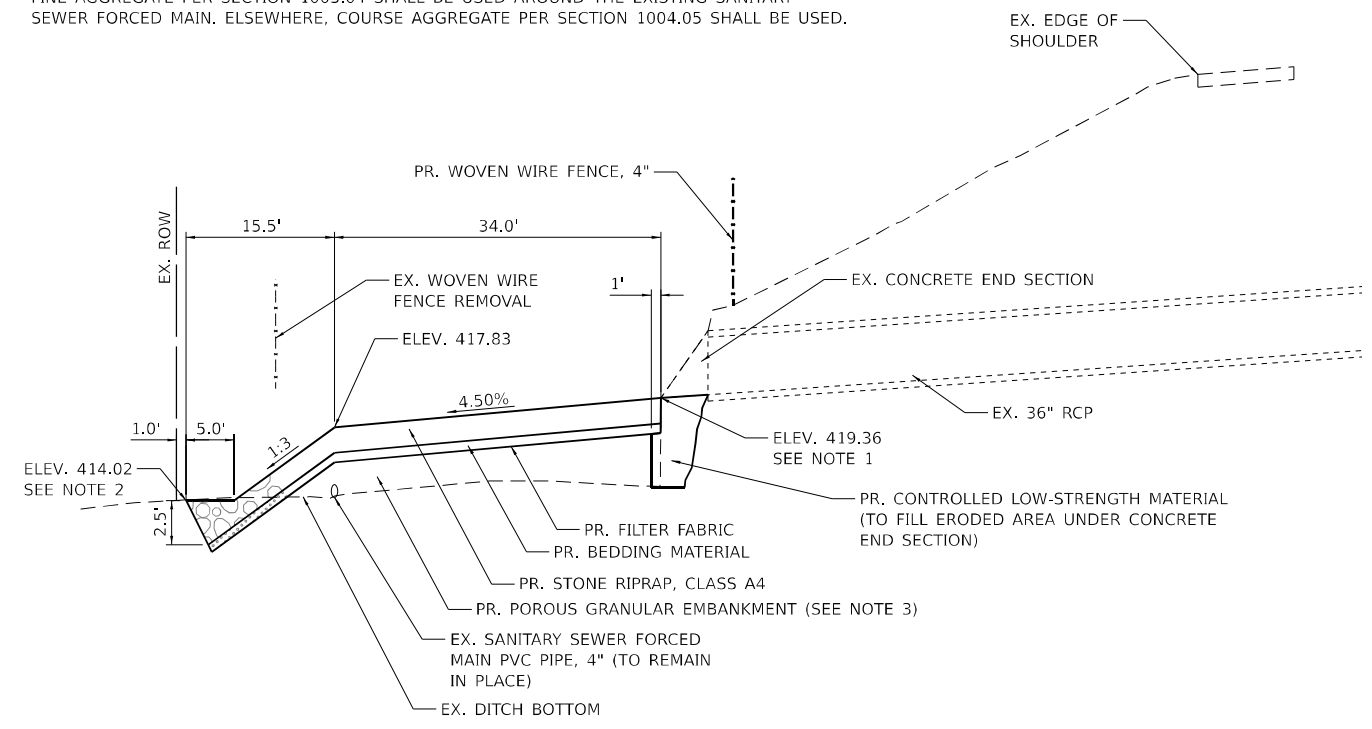
USER NAME = dllee	DESIGNED - JCL	REVISED -
PLOT SCALE = 20,0000 * / in.	DRAWN - JCL	REVISED -
PLOT DATE = 8/13/2025	CHECKED - TBP	REVISED -
	DATE - DEC 2022	REVISED -



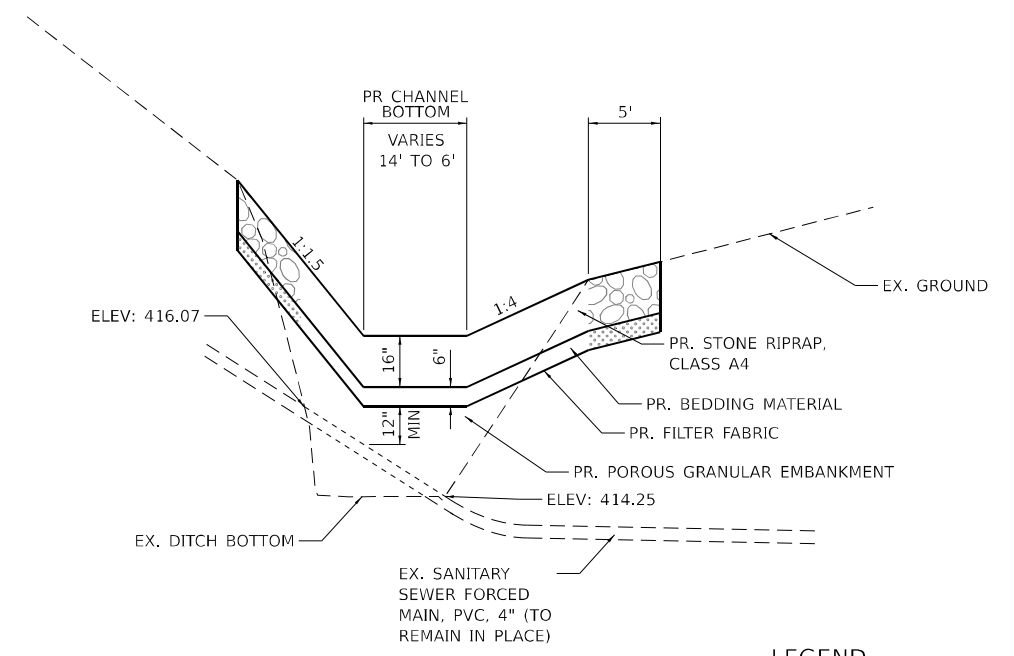
NOTES:

1. THE PROPOSED STONE RIPRAP CLASS A4 CHANNEL BOTTOM SHALL MATCH THE WIDTH AT THE EXISTING RCP CONCRETE END SECTION.
2. THE PROPOSED STONE RIPRAP CLASS A4 CHANNEL SHALL MATCH THE EXISTING CHANNEL.
3. FINE AGGREGATE PER SECTION 1003.04 SHALL BE USED AROUND THE EXISTING SANITARY SEWER FORCED MAIN. ELSEWHERE, COURSE AGGREGATE PER SECTION 1004.05 SHALL BE USED.

PLAN VIEW



SECTION A-A
NTS



SECTION B-B
NTS

LEGEND

- SURVEYED EX SANITARY SEWER FORCED MAIN LOCATION
- - - - - ASSUMED EX SANITARY SEWER FORCED MAIN LOCATION
- PR. STONE RIPRAP, CLASS A4
- PR. BEDDING MATERIAL
- PR. PERIMETER EROSION BARRIER

MODEL: Default; FILE NAME: P:\2021\12\05\9310 - Rend Lake Rest Area - Forc'd Main Repair\1.dwg - DWG; L7 Trim\CADD Sheets\078994-1\1-plan_e\1-plan_e.dwg

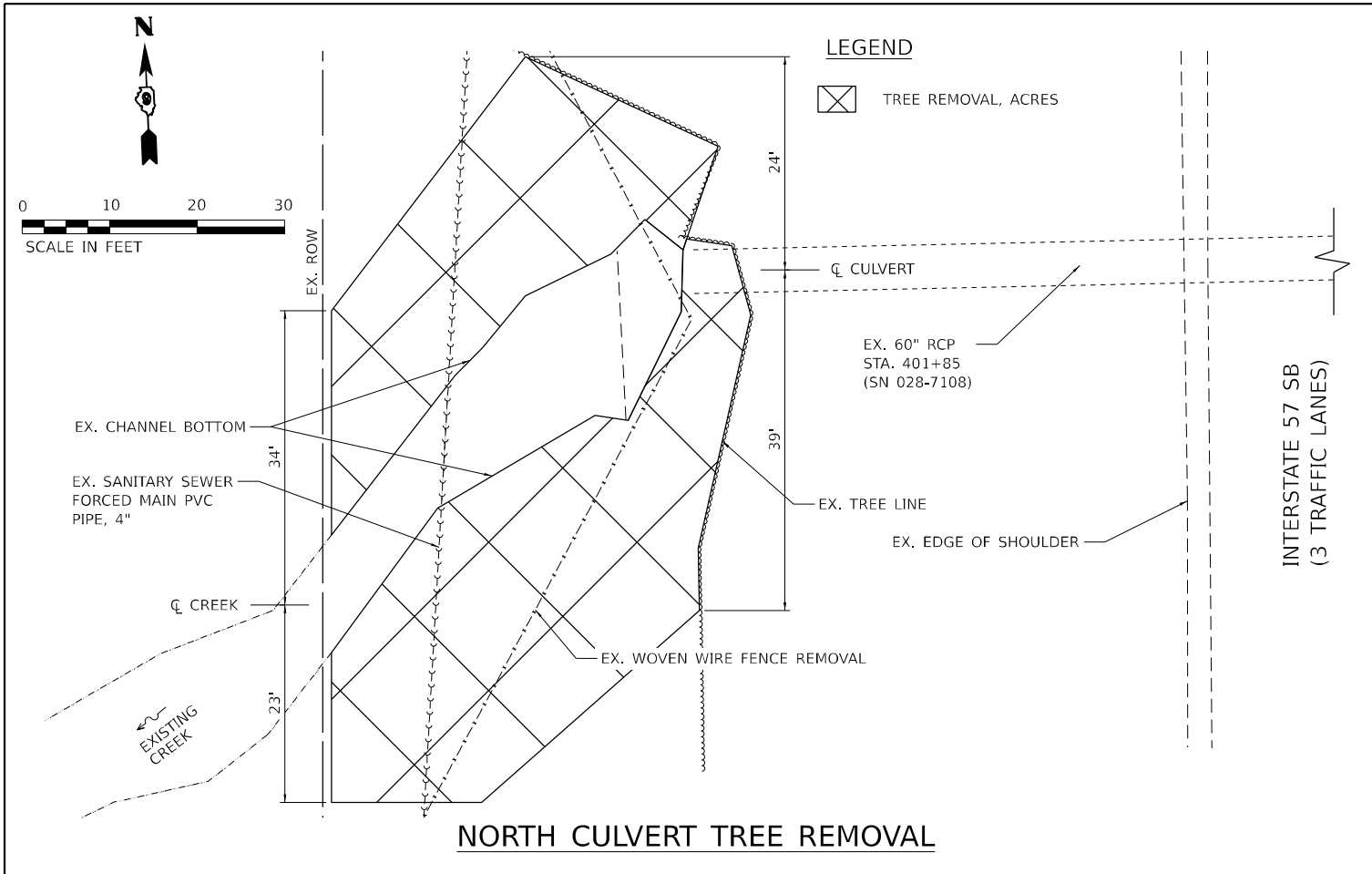


USER NAME = dllee	DESIGNED - JCL	REVISED -
PLOT SCALE = 20,0000 * / in.	DRAWN - JCL	REVISED -
PLOT DATE = 8/13/2025	CHECKED - TBP	REVISED -
	DATE - DEC 2022	REVISED -

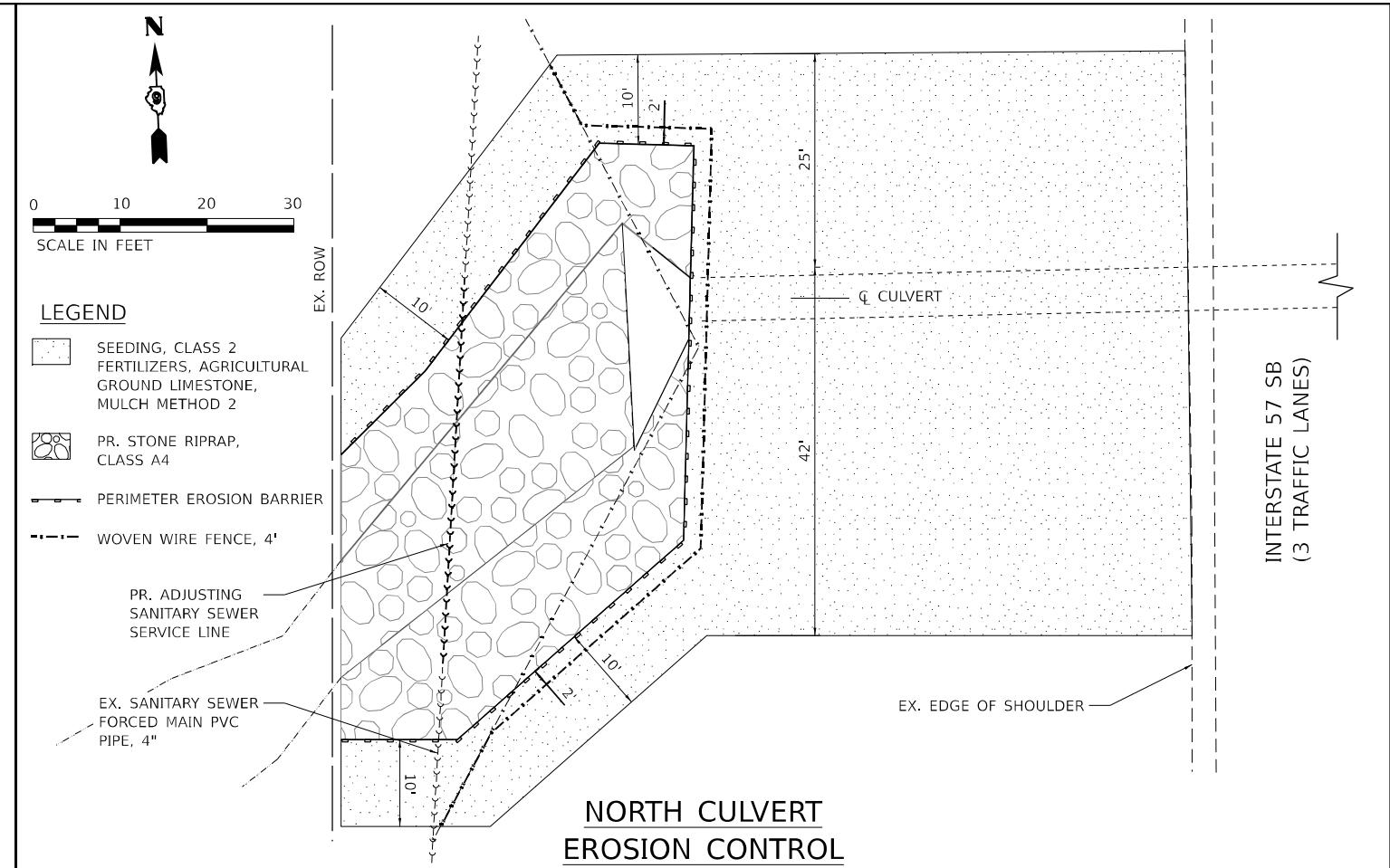
**STATE OF ILLINOIS
DEPARTMENT OF TRANSPORTATION**

PLAN SHEET	
SOUTH CULVERT EROSION REPAIR	
SCALE:	SHEET 1 OF 1 SHEETS STA. TO STA.

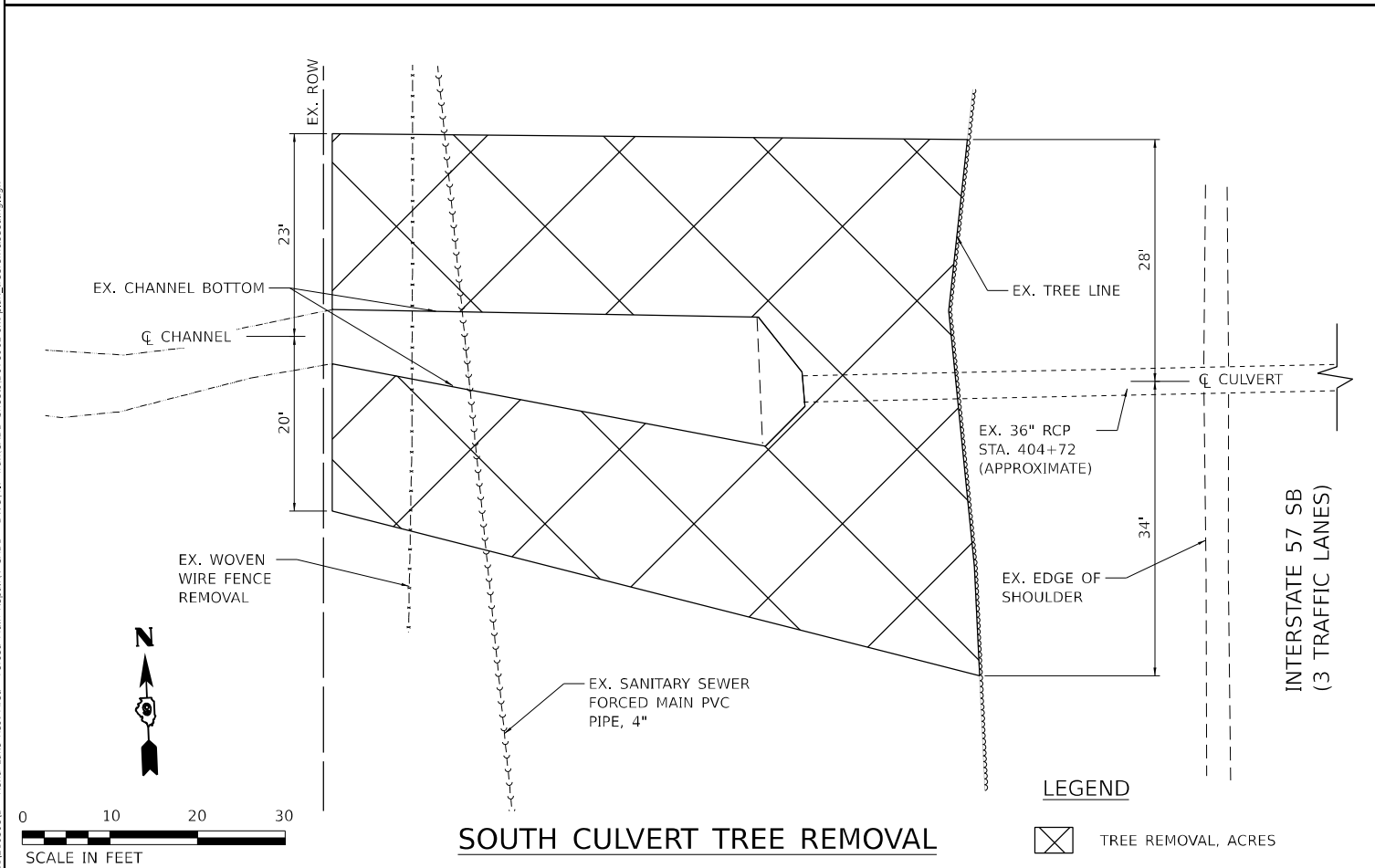
F.A.I. RTE.	SECTION	COUNTY	TOTAL SHEETS	SHEET NO.
57	(28-2-1)(I-3)RA	FRANKLIN	11	9
ILLINOIS FED. AID PROJECT			CONTRACT NO. 78994	



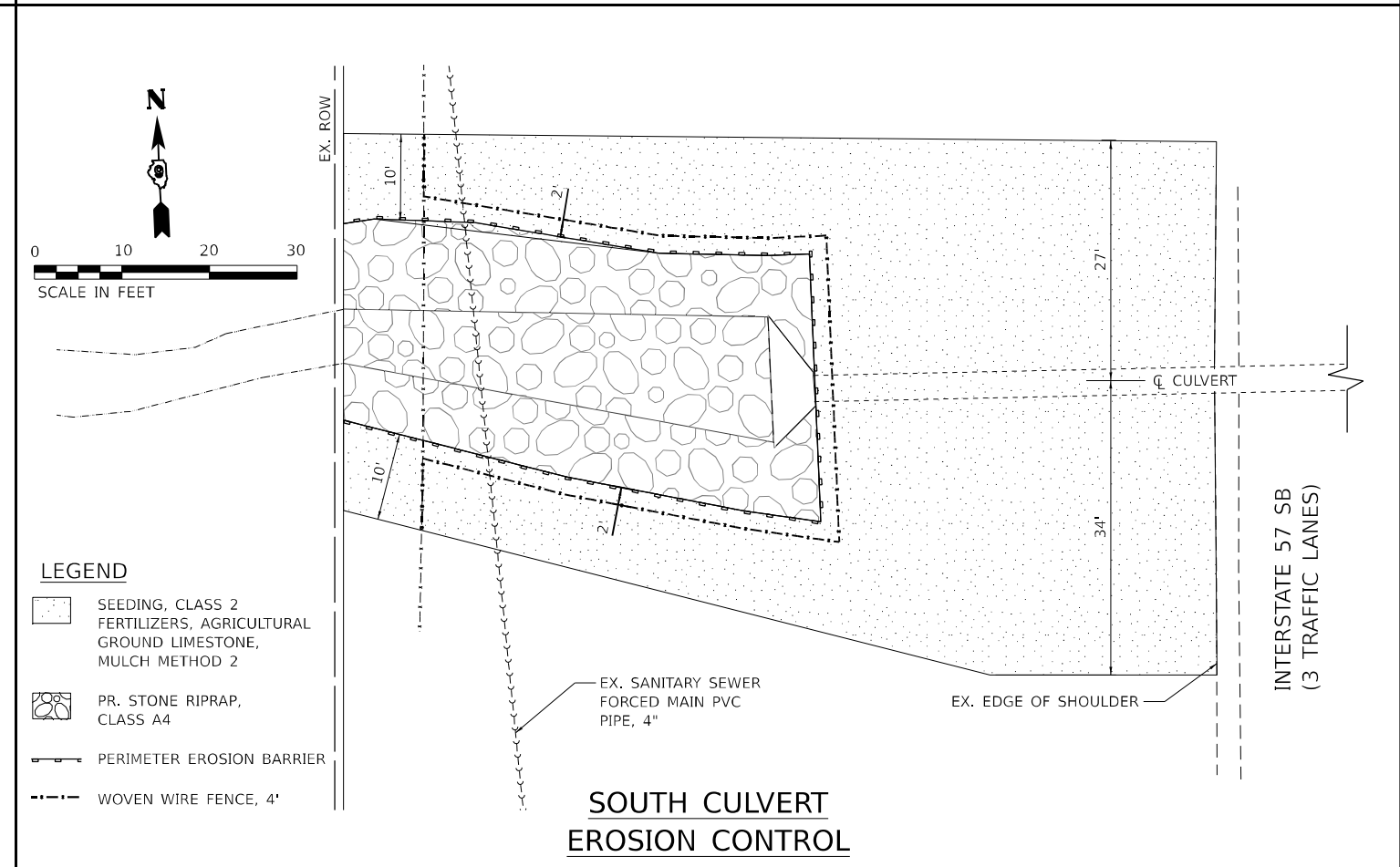
NORTH CULVERT TREE REMOVAL



NORTH CULVERT EROSION CONTROL



SOUTH CULVERT TREE REMOVAL



SOUTH CULVERT EROSION CONTROL

MODEL: Default
 FILE NAME: P:\2021\12\05\931D - Rend Lake Rest Area - Forc'd Main Repair\1.d CAD - DWG\1.7 TranCAD - Sheets\0728965-spl-plan_tree_removal_seeding.dwg



USER NAME = dllee	DESIGNED - JCL	REVISED -
DRAWN - JCL	REVISED -	
CHECKED - TBP	REVISED -	
DATE - DEC 2022	REVISED -	

PLOT SCALE = 20,0000' / in.
PLOT DATE = 8/13/2025

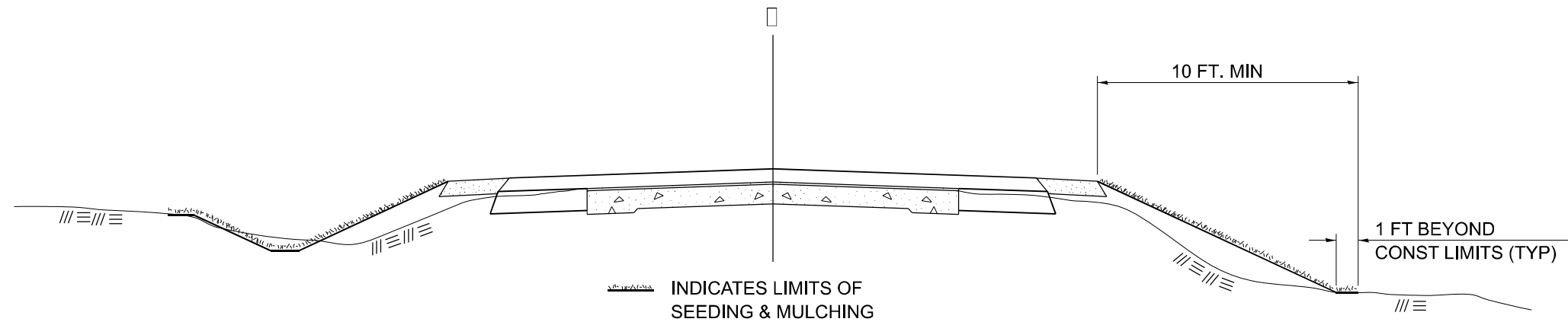
**STATE OF ILLINOIS
DEPARTMENT OF TRANSPORTATION**

**TREE REMOVAL / SEEDING SHEET
NORTH CULVERT / SOUTH CULVERT**

SCALE: SHEET 1 OF 1 SHEETS STA. TO STA.

F.A.I. RTE.	SECTION	COUNTY	TOTAL SHEETS	SHEET NO.
57	(28-2-1)(I-3)RA	FRANKLIN	11	10
CONTRACT NO. 78994				
ILLINOIS FED. AID PROJECT				

SEEDING & MULCHING



GENERAL NOTES

IN GENERAL, ALL EARTH SURFACES DISTURBED DURING CONSTRUCTION OPERATIONS SHALL BE SEEDED AND MULCHED UPON COMPLETION OF ALL GRADING OPERATIONS.

FERTILIZER NUTRIENTS SHALL BE APPLIED TO ALL SEEDED AREAS.
LIMESTONE SHALL BE APPLIED TO ALL AREAS OF FINAL SEEDING.

THE RATES OF APPLICATION OF FERTILIZER, MULCH AND LIMESTONE SHALL BE AS SPECIFIED IN THE SPECIAL PROVISIONS FOR ROAD AND BRIDGE CONSTRUCTION.

SECTIONS 250 AND 251 SHALL GOVERN THIS WORK EXCEPT AS SPECIFIED HEREIN OR AS NOTED IN THE SPECIAL PROVISIONS.

DRAWN	02-15-89
REVISED	03-27-08
REVISED	10-21-21
REVISED	05-27-22

STD. 9-19

MODEL: Default; FILE NAME: P:\2021\12\05\93\1D - Rend Lake Rest Area - Forcett Main Repair\14 CADD - DWG\14.7 Tran\CADD Sheets\078994_01-01.dwg

TWM
ENGINEERING
GEOSPATIAL SERVICES

TWM, INC.
www.twm-inc.com

IL DESIGN FIRM
LICENSE NO:
184-001220

USER NAME = dllee	DESIGNED - JCL	REVISED -
	DRAWN - JCL	REVISED -
PLOT SCALE = 50,0000 * / in.	CHECKED - TBP	REVISED -
PLOT DATE = 8/13/2025	DATE - DEC 2022	REVISED -

**STATE OF ILLINOIS
DEPARTMENT OF TRANSPORTATION**

**DISTRICT 9 STANDARDS
SEEDING & MULCHING**

SCALE: NTS SHEET 1 OF 1 SHEETS STA. TO STA.

F.A.I. RTE.	SECTION	COUNTY	TOTAL SHEETS	SHEET NO.
57	(28-2-1)(I-3)RA	FRANKLIN	11	11
CONTRACT NO. 78994				
ILLINOIS FED. AID PROJECT				