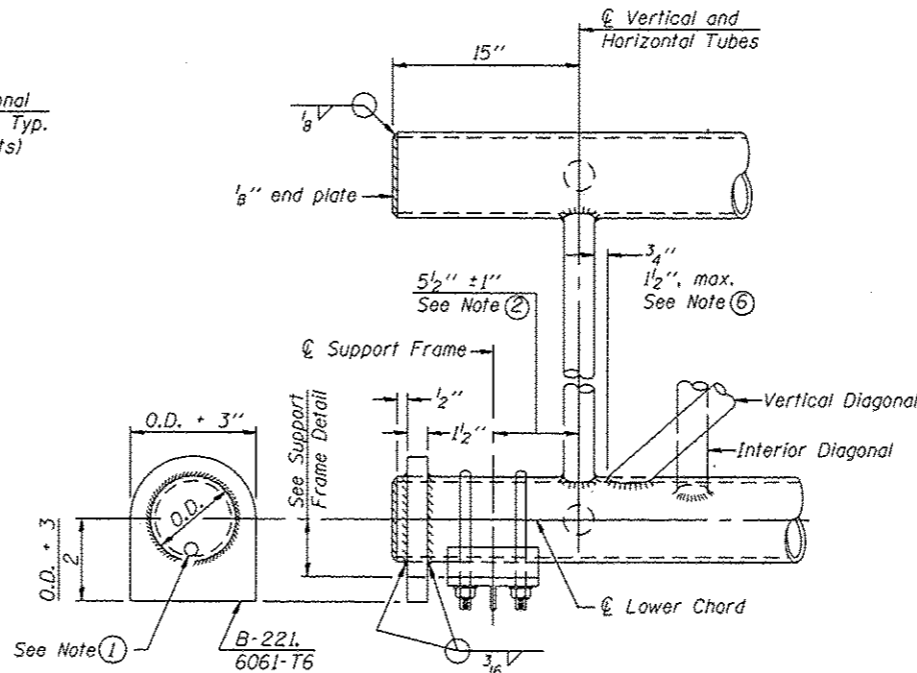
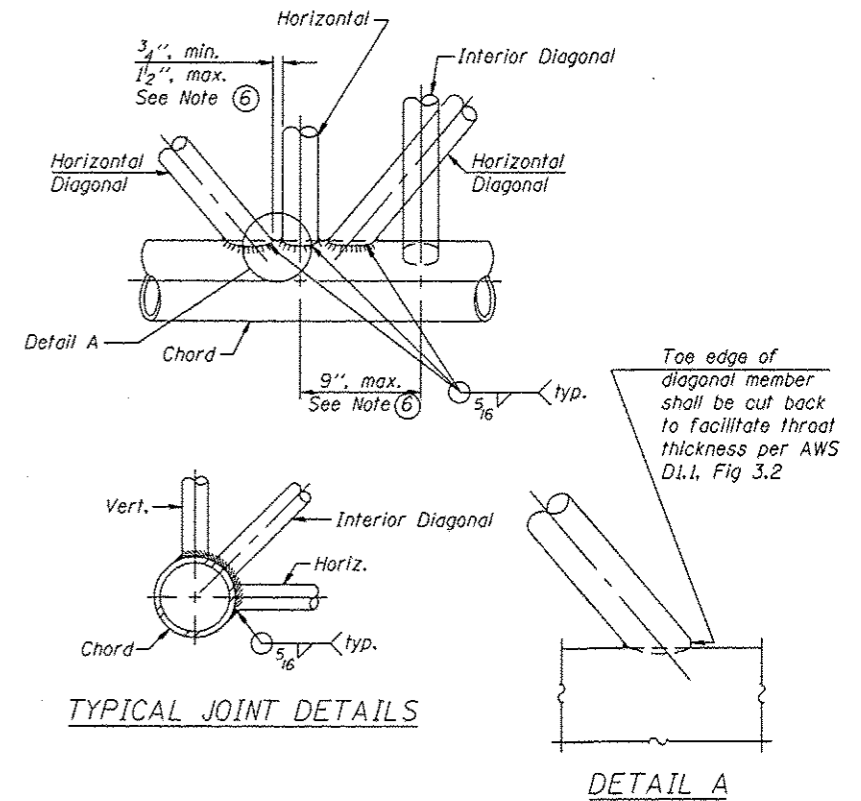


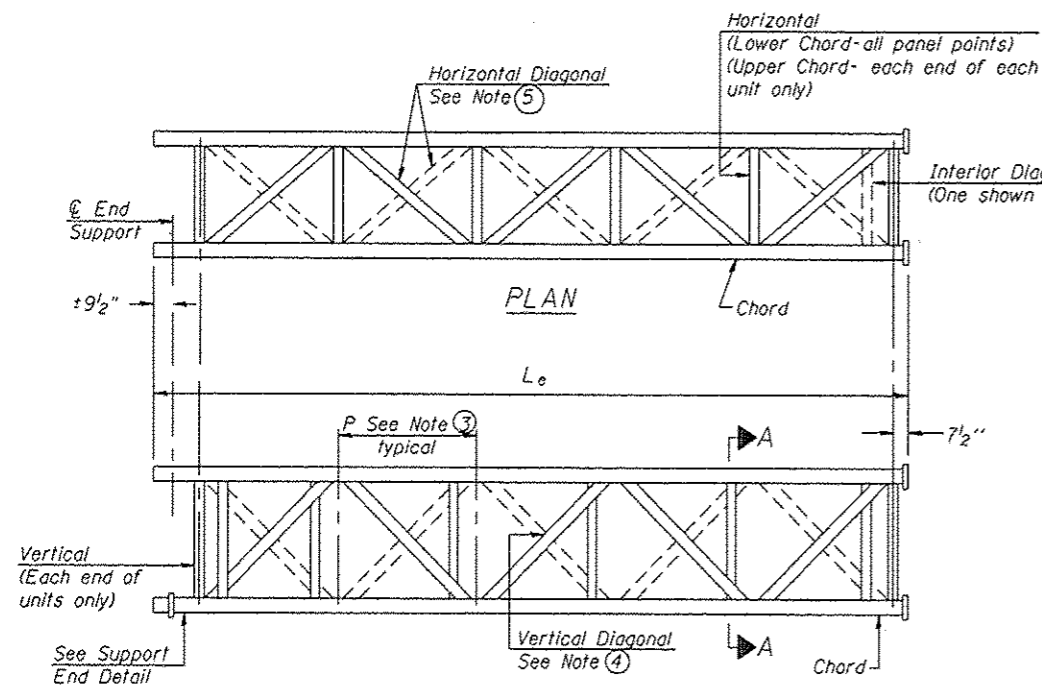
**ELEVATION
TYPICAL INTERIOR UNIT**
Even number of panels/interior unit required.



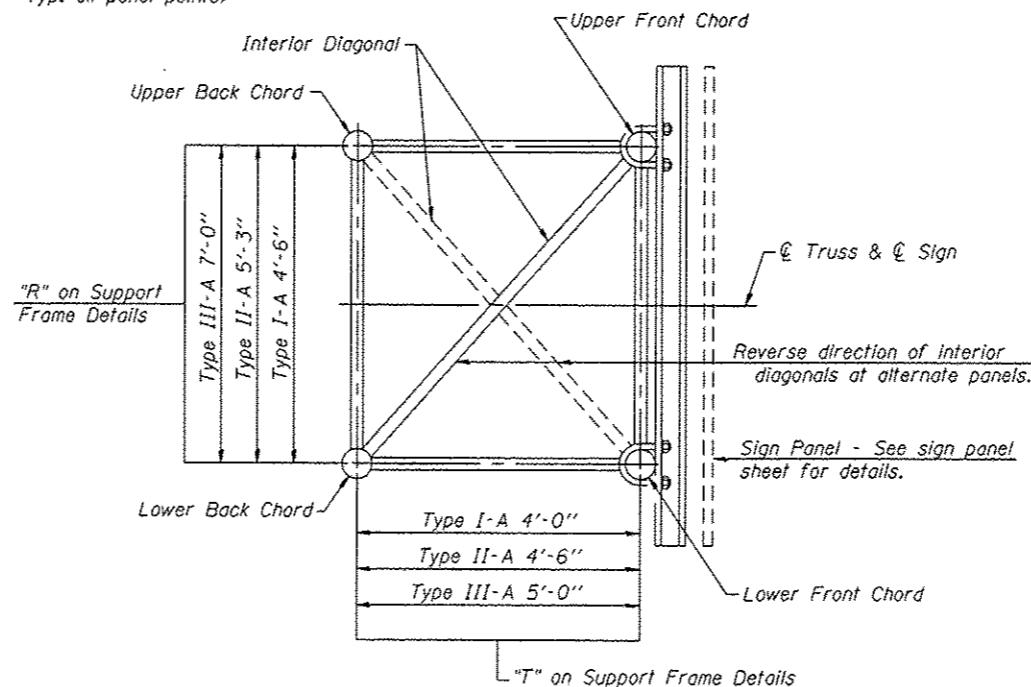
SUPPORT END DETAIL FOR EXTERIOR UNIT



TYPICAL JOINT DETAILS



**ELEVATION
TYPICAL EXTERIOR UNIT**
Even or odd number of panels/exterior units allowed.



SECTION A-A

NOTES

- ① Contractor may alternatively use standard aluminum drive-fit cap to close end. 1/2" ϕ drain hole in end plate/drive-fit cap. (Typ. at ends of all chords)
- ② 5 1/2" end dimension may vary by $\pm 1"$ to provide uniform panel spacing (P).
- ③ Panel spacing (P) shall be uniform for entire truss and between 4'-0" and 5'-0" for Type I-A or 4'-0" and 5'-6" for Types II-A and III-A.
- ④ Vertical Diagonals in front and back face shall alternate.
- ⑤ Hidden lines show wind bracing alternates direction between planes of top and bottom chords.
- ⑥ All diagonals shall be detailed for minimum offset from the panel point based on the following: Offset shall be such as to provide a 3/4" minimum to 1/2" maximum clearance between any diagonal and any horizontal or vertical member, and to provide clearance for U-bolt connections of signs or walkway brackets.

H:\Jobs\2011\20110302-44\CAD\Site\tdgn\00\4629f-s02spon-trussdet.dgn 8/1/2013 3:56:55 PM

GRAF 8501 W. Higgins Road, Suite 280
Chicago, Illinois 60631
(773) 399-0112

USER NAME #	DESIGNED -	REVISOR
PLOT SCALE #	CHECKED -	REVISOR
PLOT DATE #	DRAWN - 08/01/2013	REVISOR
	CHECKED -	REVISOR

**STATE OF ILLINOIS
DEPARTMENT OF TRANSPORTATION**

**ALUMINUM SPAN SIGN TRUSS; STEEL SUPPORTS
SPAN TRUSS DETAILS 1**

SHEET NO. 52 OF 28 SHEETS

F.A. RTE.	SECTION	COUNTY	TOTAL SHEETS	SHEET NO.
VAR. 01 QVD SIN STR REPL14-30		VARIOUS	47	11
			CONTRACT NO. 46291	
ILLINOIS FED. AID PROJECT				