

* Center of horizontal to center of splice dimension may vary. Verify before drilling holes in mounting tube.

PLAN DETAIL "A"
⊕ Span between Panel Points

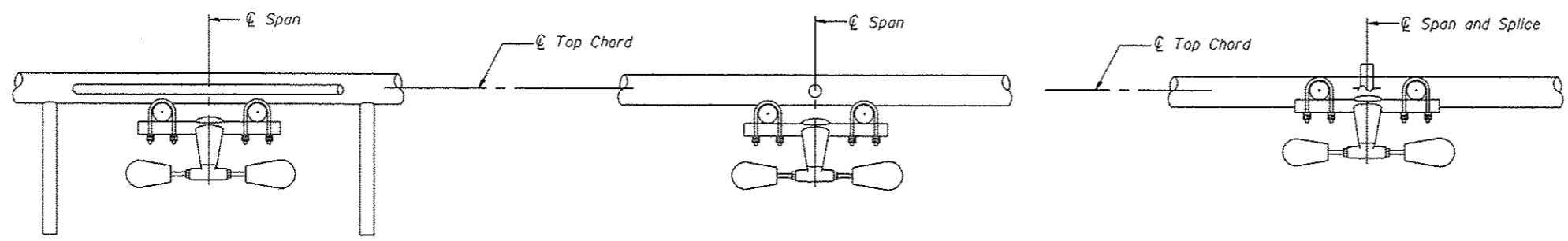
PLAN DETAIL "B"
⊕ Span at Panel Point

PLAN DETAIL "C"
⊕ Span at ⊕ Chord Splice

NOTES

Damper: One damper per truss. (31 lbs. minimum Stockbridge-Type Aluminum - 29" minimum between ends of weights) Cost included in Overhead Sign Structure...

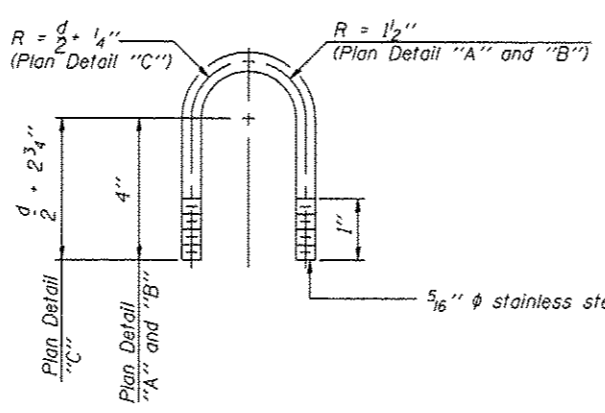
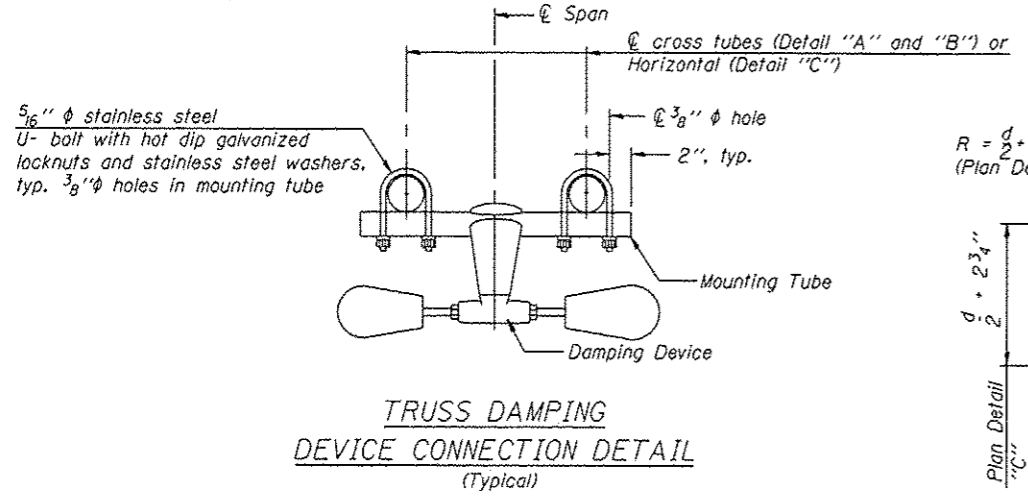
Materials: Materials: Aluminum tubes shall be ASTM B221 alloy 6061 temper T6. Cost included in Overhead Sign Structure...



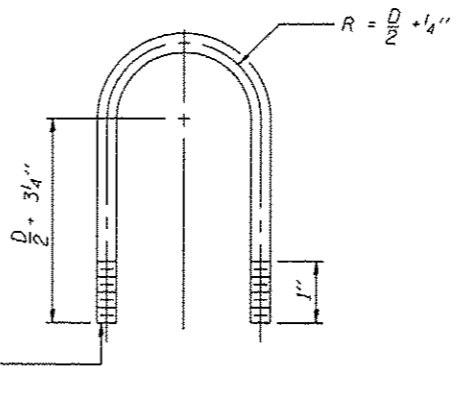
SECTION A-A

SECTION B-B

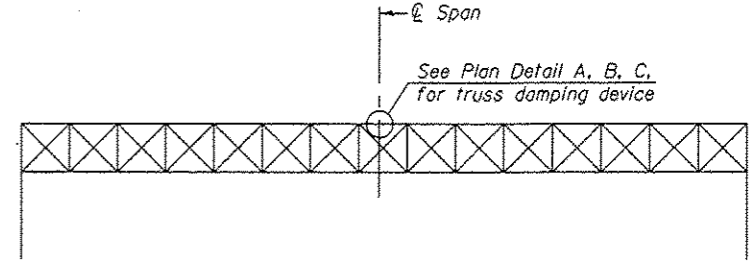
SECTION C-C



DAMPING DEVICE MOUNTING TUBE U-BOLT DETAIL
(Typical)



TOP CHORD TO CROSS TUBE U-BOLT DETAIL
(Typical - Detail "A" and "B")



ELEVATION
Aluminum Overhead Sign Truss

H:\Jobs\2011\2011012-44\CAD\Site\cogn\00\DH629-504span-trussdampdev.dgn 8/1/2013 3:51:02 PM

OS-A-D

6-1-12

GRAF
8501 N. Higgins Road, Suite 230
Chicago, Illinois 60631
(773) 399-0112

USER NAME :	DESIGNED -	REVISED
PLOT SCALE :	CHECKED -	REVISED
PLOT DATE :	DRAWN - 08/01/2013	REVISED
	CHECKED -	REVISED

STATE OF ILLINOIS
DEPARTMENT OF TRANSPORTATION

ALUMINUM SPAN SIGN TRUSS; STEEL SUPPORTS
SPAN TRUSS DAMPING DEVICE

F.A. RTE.	SECTION	COUNTY	TOTAL SHEETS	SHEET NO.
VAR.	DL OVD SIN STR REPL14-30	VARIOUS	47	13
CONTRACT NO. 46291			ILLINOIS FED. AID PROJECT	

SHEET NO. 54 OF 28 SHEETS