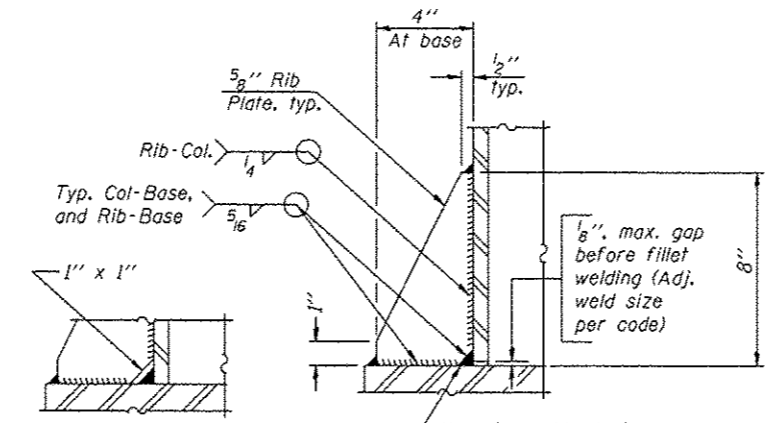


Hexagon locknut and washer (top), leveling nut and washer (bottom). Galvanize per AASHTO M232. Nuts shall each be tightened against base plate with 200 lb.-ft. minimum torque.

Ribs shall be cut to fit slope of pipe.

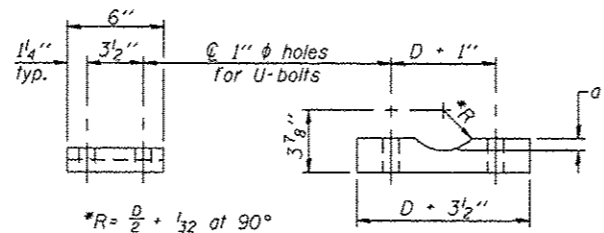
Metal Screen consists of Stainless Steel Standard Grade Wire Cloth, 3" wide, 1/4" maximum opening with a minimum wire diameter of AWG, No. 16 with a minimum 2" lap. Secure to base plate after erection with 3/4" stainless steel banding.

DETAIL B



\*\* Alternate detail if welding col. to base plate first, then snip inside corner of ribs. Terminate weld on rib 1/4" from snip.

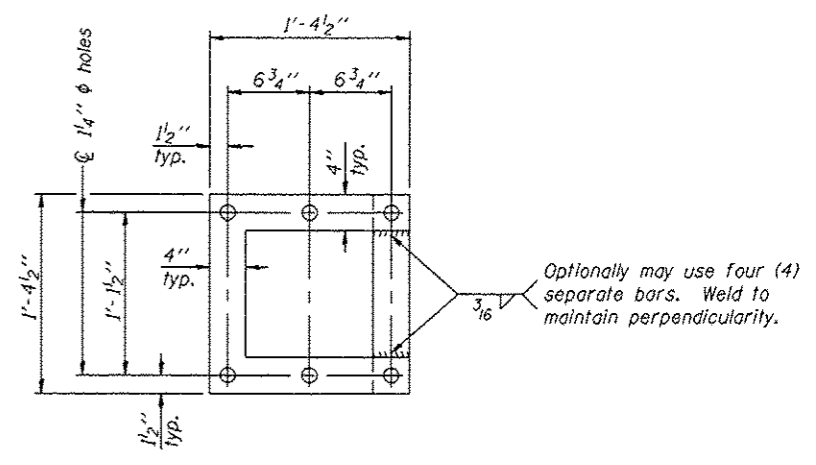
SECTION D-D



\*R =  $\frac{D}{2} + \frac{1}{32}$  at 90°  
D = Outside Diameter of Chord.

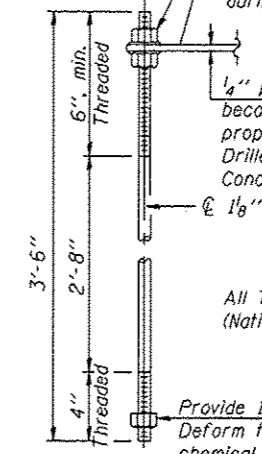
SADDLE SHIM DETAIL  
ASTM B26 Alloy 356-F  
or  
ASTM B209 Alloy 6061-T651  
(4 required per sign truss)

Truss Chord Nominal Dia.	a
5"	3/4"
5 1/2"	13/16"
6"	7/8"
6 1/2"	15/16"



POSITIONING PLATE(S)

At each location, provide 1/4" thick positioning plate(s) and six (6) additional nuts to be used with leveling nuts to maintain anchor bolts position during concrete placement.



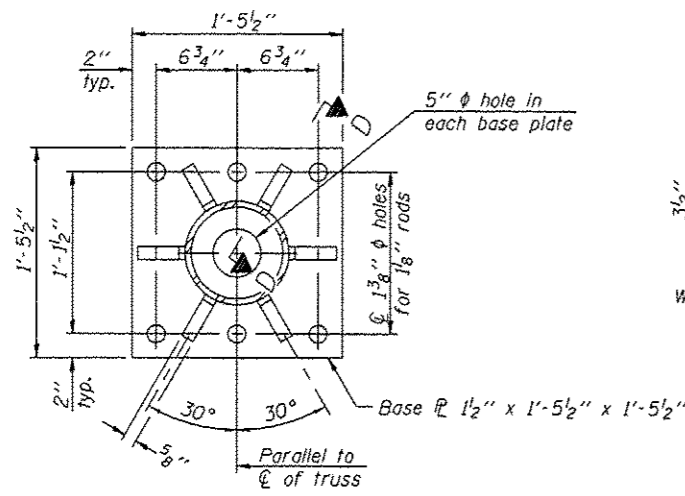
1/4" plate and extra nuts become Contractor's property. Cost included in Drilled Shaft Concrete Foundations.

All Thread = NC (National Coarse)

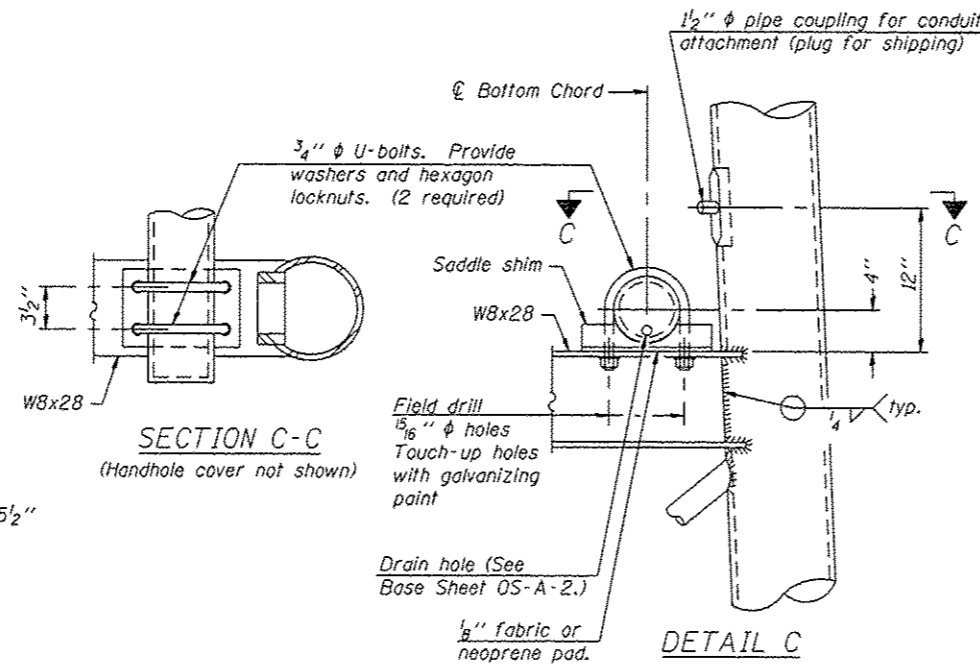
Provide 1 nut per rod. Deform thread or use chemical thread lock to secure.

ANCHOR ROD DETAIL  
Drilled Shaft Foundation

Anchor rods shall conform to ASTM F1554 Grade 105. Galvanize upper 12" minimum per AASHTO M232. No welding shall be permitted on rods.



SECTION B-B



SECTION C-C  
(Handhole cover not shown)

DETAIL C

R:\Jobs\2011\20130102-44\CAD\Site\egp\00\046291-s06span-framedet.dgn 8/1/2013 3:51:03 PM