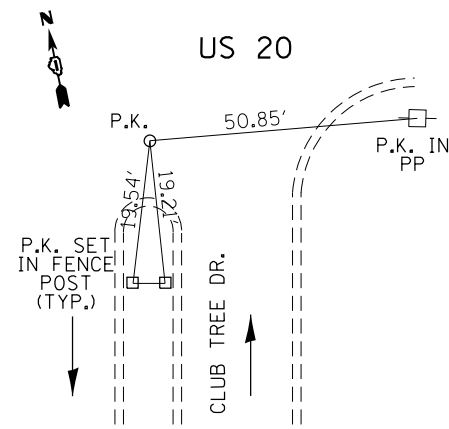
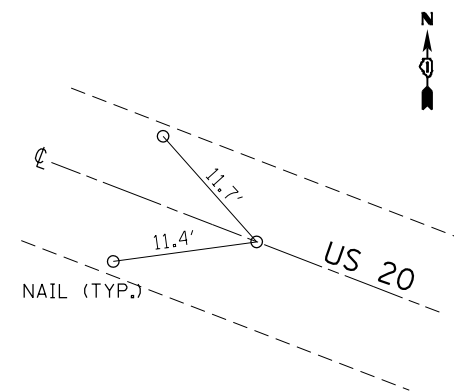


**CP #1**

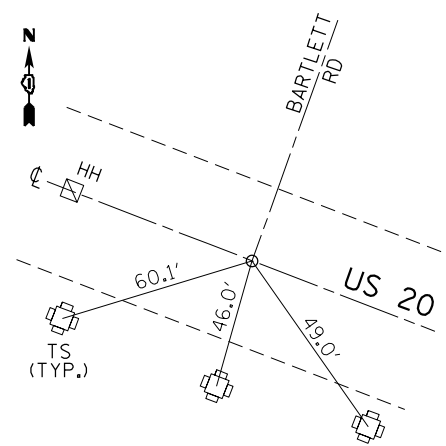


**CP #2**

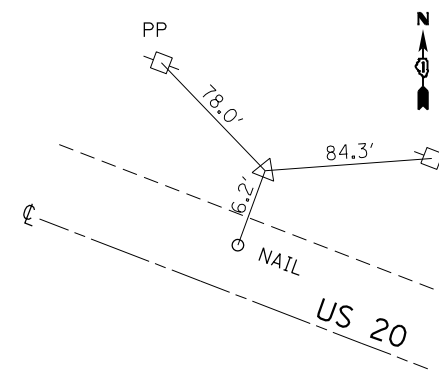
**TIES FROM EXTENDED SURVEY**



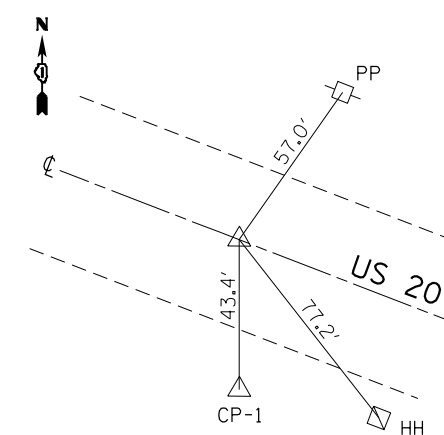
**PT #115**  
STA. 481+69.18



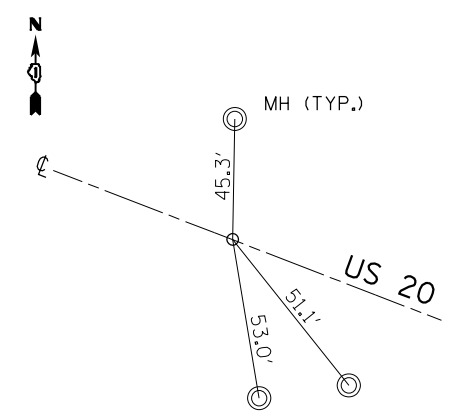
**PT #124**  
C-C



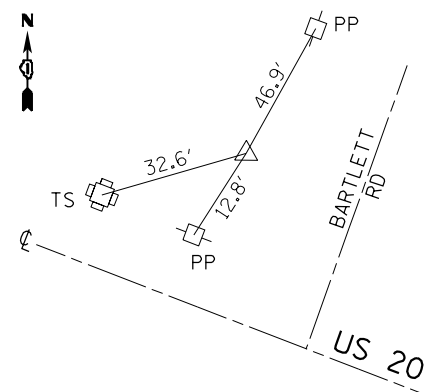
**PT #116**  
STA. 497+43.85



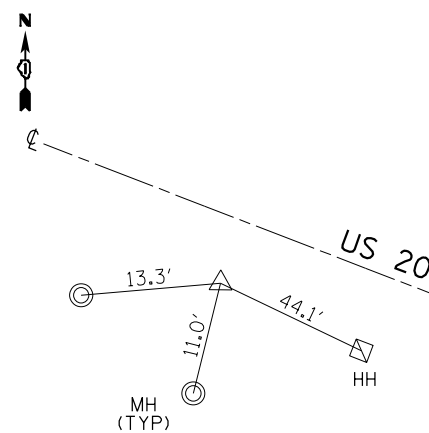
**PT #125**  
PI  
STA. 504+17.33



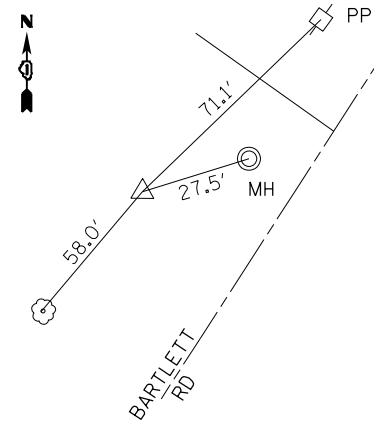
**PT #110**  
END POINT  
STA. 508+69.24



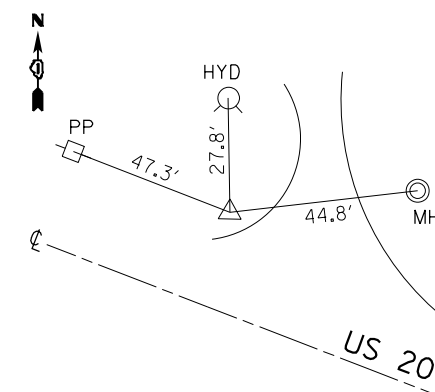
**CP-2**



**CP-1**



**CP-3**



**CP-4**

FILE NAME =	USER NAME = galbenjr	DESIGNED -	REVISED -
ct:\pw\work\p1\dot\galbenjr\d0304019\P157408-sht-ATB.dgn		DRAWN -	REVISED -
Default	PLOT SCALE = 400.0000' / in.	CHECKED -	REVISED -
	PLOT DATE = 4/3/2013	DATE -	REVISED -

**STATE OF ILLINOIS  
DEPARTMENT OF TRANSPORTATION**

**EXISTING ALIGNMENT TIES  
U.S. ROUTE 20 (LAKE ST.) OAK AVE. TO PARK AVE.**

SCALE: 1"=100' SHEET OF SHEETS STA. TO STA.

F.A.P. RTE.	SECTION	COUNTY	TOTAL SHEETS	SHEET NO.
345	7Y-WRS	COOK	97	17
CONTRACT NO. 60N18				
ILLINOIS FED. AID PROJECT				