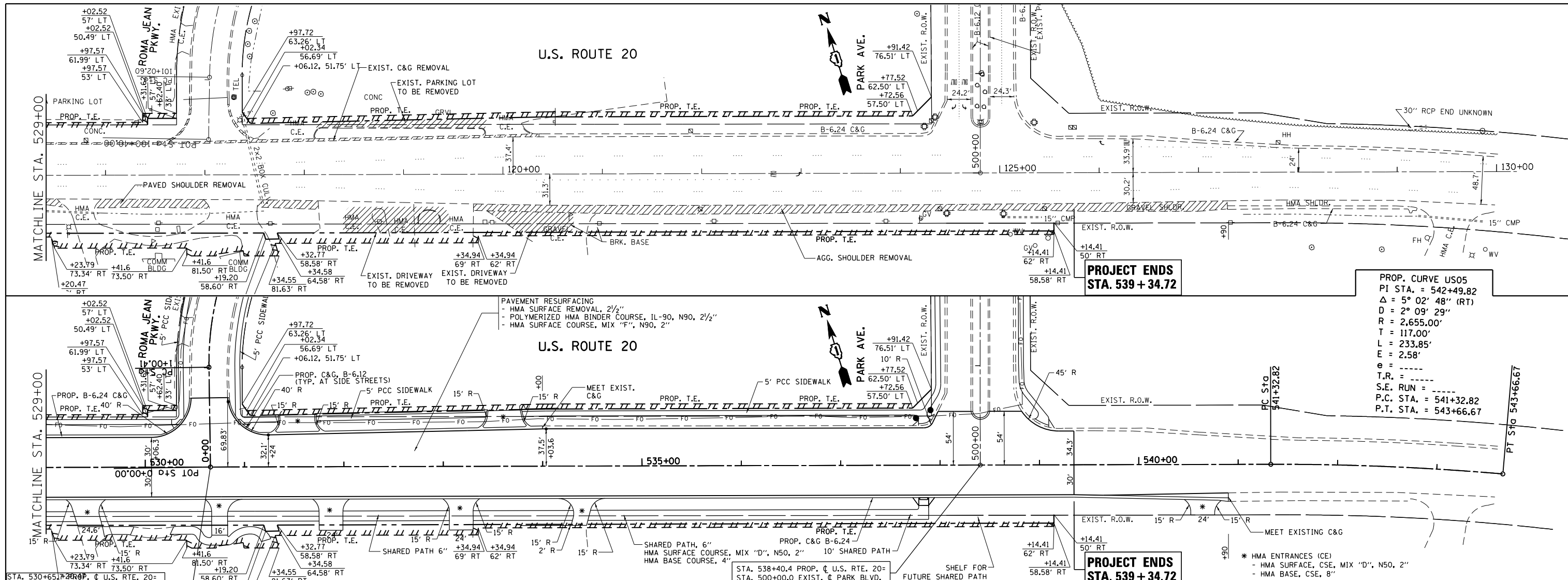
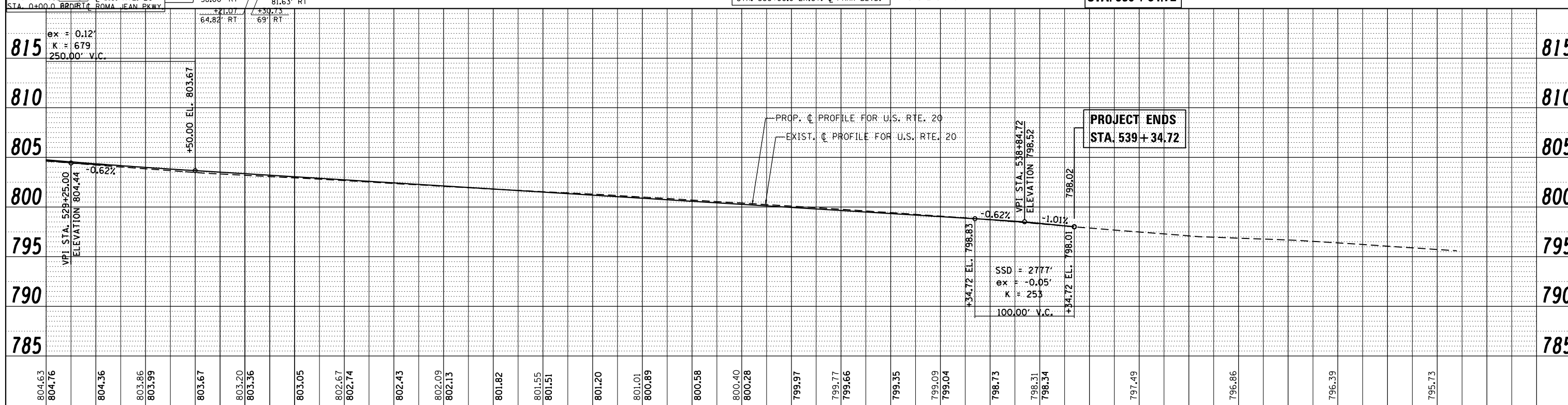


PLAN	SURVEYED	DATE
	PLOTTED	
	ALIGNED	
	CHECKED	
	FILED	
	NO.	

PROFILE	SURVEYED	DATE
	PLOTTED	
	GRADES	
	CHECKED	
	STRUCTURE	
	NOTATIONS	
	CPAD	
	NO.	



PROP. CURVE US05
 PI STA. = 542+49.82
 $\Delta = 5^\circ 02' 48''$ (RT)
 $D = 2^\circ 09' 29''$
 $R = 2,655.00'$
 $T = 117.00'$
 $L = 233.85'$
 $E = 2.58'$
 $e = \text{---}$
 $T.R. = \text{---}$
 $S.E. RUN = \text{---}$
 $P.C. STA. = 541+32.82$
 $P.T. STA. = 543+66.67$



815	810	805	800	795	790	785																														
804.63	804.76	804.36	803.86	803.99	803.67	803.20	803.36	803.05	802.67	802.74	802.43	802.09	802.13	801.82	801.55	801.51	801.20	801.01	800.89	800.58	800.40	800.28	799.97	799.77	799.66	799.35	799.09	799.04	798.73	798.31	798.34	797.49	796.86	796.39	795.73	
529+00	530+00	531+00	532+00	533+00	534+00	535+00	536+00	537+00	538+00	539+00	540+00	541+00	542+00	543+00																						

STATE OF ILLINOIS
 DEPARTMENT OF TRANSPORTATION

ROADWAY PLAN AND PROFILE
 U.S. ROUTE 20 (OAK AVE. - PARK AVE.)

SCALE: 1"=50' SHEET NO. OF SHEETS STA. 529+00 TO STA. 543+66.67

F.A.P. RTE.	SECTION	COUNTY	TOTAL SHEETS	SHEET NO.
345	7Y-WRS	COOK	97	19
CONTRACT NO. 60N18				
ILLINOIS FED. AID PROJECT				

FILE NAME =	USER NAME = galbenjr	DESIGNED -	REVISED -
c:\pwwork\pwwork\galbenjr\d0304019\PI57408-sht-plnprf.dgn		DRAWN -	REVISED -
		CHECKED -	REVISED -
		DATE -	REVISED -