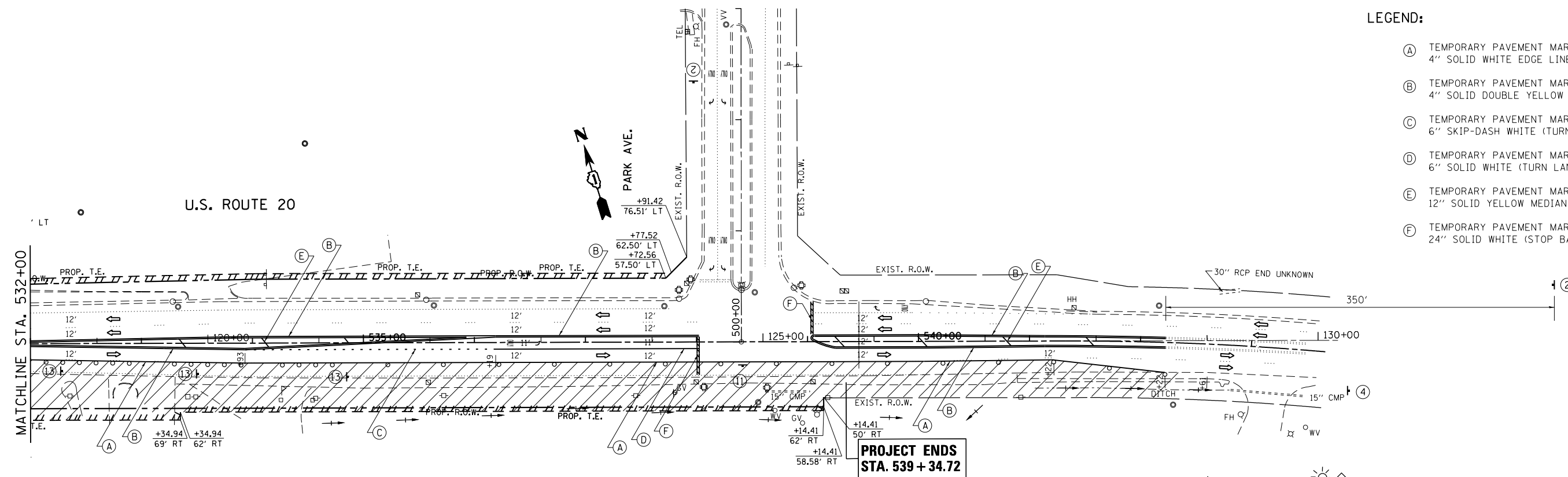
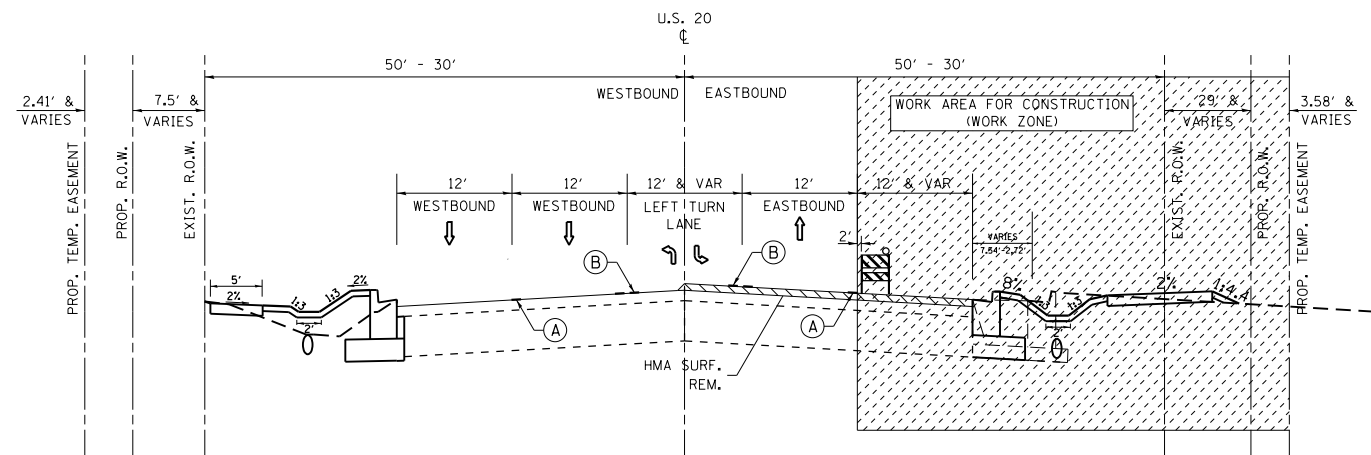
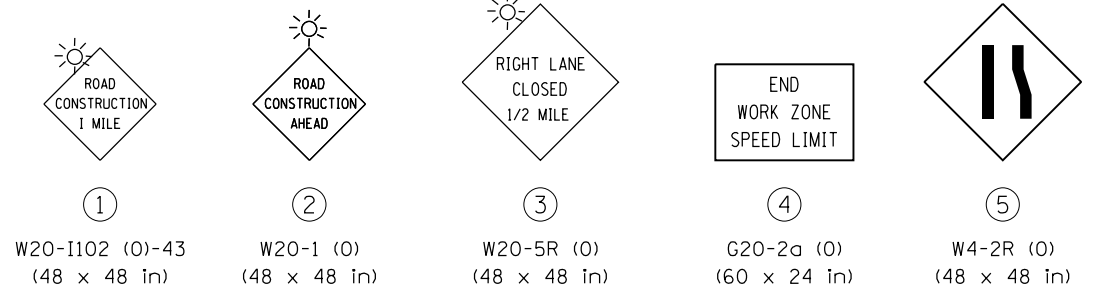


LEGEND:

- (A) TEMPORARY PAVEMENT MARKING, TYPE III
4" SOLID WHITE EDGE LINE
- (B) TEMPORARY PAVEMENT MARKING, TYPE III
4" SOLID DOUBLE YELLOW
- (C) TEMPORARY PAVEMENT MARKING, TYPE III
6" SKIP-DASH WHITE (TURN LANE)
- (D) TEMPORARY PAVEMENT MARKING, TYPE III
6" SOLID WHITE (TURN LANE)
- (E) TEMPORARY PAVEMENT MARKING, TYPE III
12" SOLID YELLOW MEDIAN DIAGONAL, 50' C-C
- (F) TEMPORARY PAVEMENT MARKING, TYPE III
24" SOLID WHITE (STOP BAR)



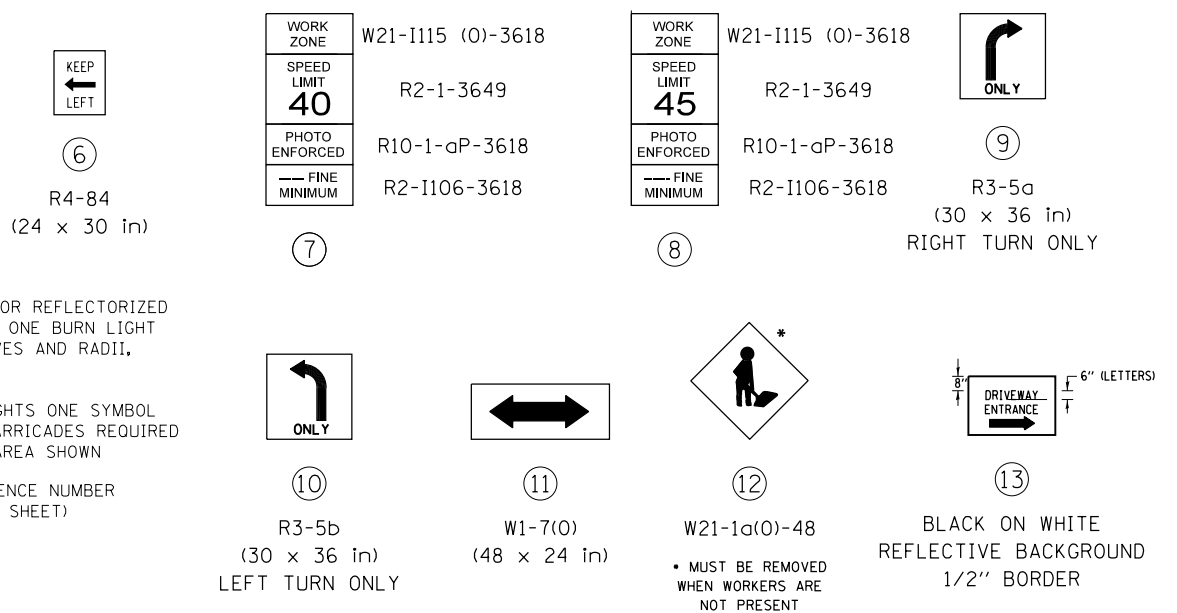
FOR WIDENING AND RESURFACING OPERATIONS THE SIGNING, BARRICADING AND LANE CLOSURE SHALL BE IN ACCORDANCE WITH STDS. 701602 AND 701606 IN ADDITION TO THE SIGNS SHOWN.



**U.S. 20 (LAKE STREET)
STAGE II CONSTRUCTION
STA. 515+78.66 TO STA. 539+34.72**

EASTBOUND: (WIDENING SECTION)
2" HMA SURFACE COURSE, MIX "F", N90
2-1/2" POLY. HMA BINDER COURSE, IL-19, N90
8" HMA BASE COURSE
12" AGG. SUBGRADE IMPROVEMENT

- BARRICADE TYPE I OR TYPE II OR REFLECTORIZED DRUM OR VERTICAL PANEL WITH ONE BURN LIGHT @ 50'C-C (TYP), 25'C-C IN CURVES AND RADII, AND 20'C-C IN TAPERS.
- ⊥ TYPE III BARRICADE WITH 2 LIGHTS ONE SYMBOL REPRESENTS ANY NUMBER OF BARRICADES REQUIRED TO ADEQUATELY PROTECT THE AREA SHOWN
- + CONSTRUCTION SIGN AND REFERENCE NUMBER (REFER TO SIGN DETAIL LEGEND SHEET)
- ↑ TRAFFIC LANE
- ➔ ARROW BOARD
- SHOULDER REMOVAL
- ▨ HMA SURF. REMOVAL
- ▩ WORK ZONE



TRAFFIC CONTROL SIGNS

FILE NAME = c:\p\work\p1dot\galbenj\d0304020\PI57	USER NAME = galbenj 408-sh-t-Design-staging2.dgn	DESIGNED -	REVISED -	STATE OF ILLINOIS DEPARTMENT OF TRANSPORTATION	SUGGESTED STAGING & TRAFFIC CONTROL PLAN, STAGE II U.S. 20 (OAK AVE. TO PARK AVE.)			F.A.P. RTE.	SECTION	COUNTY	TOTAL SHEETS	SHEET NO.
MODELNAME	PLOT DATE = 4/3/2013	DRAWN -	REVISED -					345	7Y-WRS	COOK	97	25
		CHECKED -	REVISED -		CONTRACT NO. 60N18							
		DATE -	REVISED -		ILLINOIS FED. AID PROJECT							