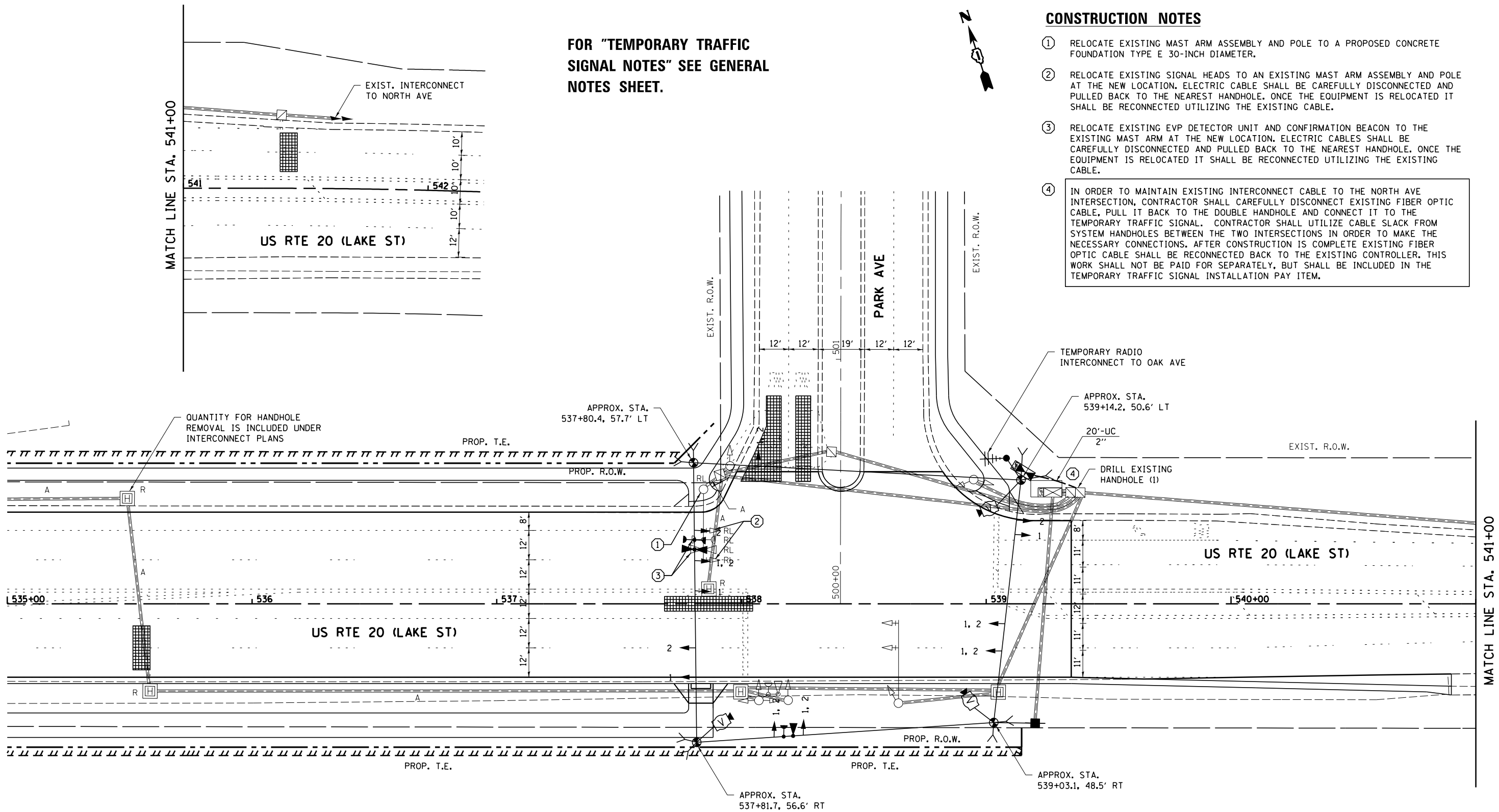


FOR "TEMPORARY TRAFFIC SIGNAL NOTES" SEE GENERAL NOTES SHEET.



**CONSTRUCTION NOTES**

- ① RELOCATE EXISTING MAST ARM ASSEMBLY AND POLE TO A PROPOSED CONCRETE FOUNDATION TYPE E 30-INCH DIAMETER.
- ② RELOCATE EXISTING SIGNAL HEADS TO AN EXISTING MAST ARM ASSEMBLY AND POLE AT THE NEW LOCATION. ELECTRIC CABLE SHALL BE CAREFULLY DISCONNECTED AND PULLED BACK TO THE NEAREST HANDHOLE. ONCE THE EQUIPMENT IS RELOCATED IT SHALL BE RECONNECTED UTILIZING THE EXISTING CABLE.
- ③ RELOCATE EXISTING EVP DETECTOR UNIT AND CONFIRMATION BEACON TO THE EXISTING MAST ARM AT THE NEW LOCATION. ELECTRIC CABLES SHALL BE CAREFULLY DISCONNECTED AND PULLED BACK TO THE NEAREST HANDHOLE. ONCE THE EQUIPMENT IS RELOCATED IT SHALL BE RECONNECTED UTILIZING THE EXISTING CABLE.
- ④ IN ORDER TO MAINTAIN EXISTING INTERCONNECT CABLE TO THE NORTH AVE INTERSECTION, CONTRACTOR SHALL CAREFULLY DISCONNECT EXISTING FIBER OPTIC CABLE, PULL IT BACK TO THE DOUBLE HANDHOLE AND CONNECT IT TO THE TEMPORARY TRAFFIC SIGNAL. CONTRACTOR SHALL UTILIZE CABLE SLACK FROM SYSTEM HANDHOLES BETWEEN THE TWO INTERSECTIONS IN ORDER TO MAKE THE NECESSARY CONNECTIONS. AFTER CONSTRUCTION IS COMPLETE EXISTING FIBER OPTIC CABLE SHALL BE RECONNECTED BACK TO THE EXISTING CONTROLLER. THIS WORK SHALL NOT BE PAID FOR SEPARATELY, BUT SHALL BE INCLUDED IN THE TEMPORARY TRAFFIC SIGNAL INSTALLATION PAY ITEM.



NOTE:  
THE TRAFFIC SIGNAL CONTROLLER EQUIPMENT FOR THIS PROJECT SHALL BE "EAGLE" TO MATCH THE EXISTING ADJACENT SYSTEM.

FILE NAME =	USER NAME = pocitechal	DESIGNED - LP	REVISED -	<b>STATE OF ILLINOIS DEPARTMENT OF TRANSPORTATION</b>	<b>TEMPORARY TRAFFIC SIGNAL INSTALLATION AND REMOVAL PLAN STAGE 1 AND 2 US RTE 20 (LAKE ST) AT PARK AVE</b>			F.A.P. RTE.	SECTION	COUNTY	TOTAL SHEETS	SHEET NO.
et:\pw_work\pocitechal\0318457\157408-TS.dgn		DRAWN - LP	REVISED -		345	7Y-WRS	COOK	97	54			
Default	PLOT SCALE = 40.0000' / in.	CHECKED - PB / SM	REVISED -		CONTRACT NO. 60N18							
	PLOT DATE = 1/3/2013	DATE - 01/03/2013	REVISED -		ILLINOIS FED. AID PROJECT							

TS#1330