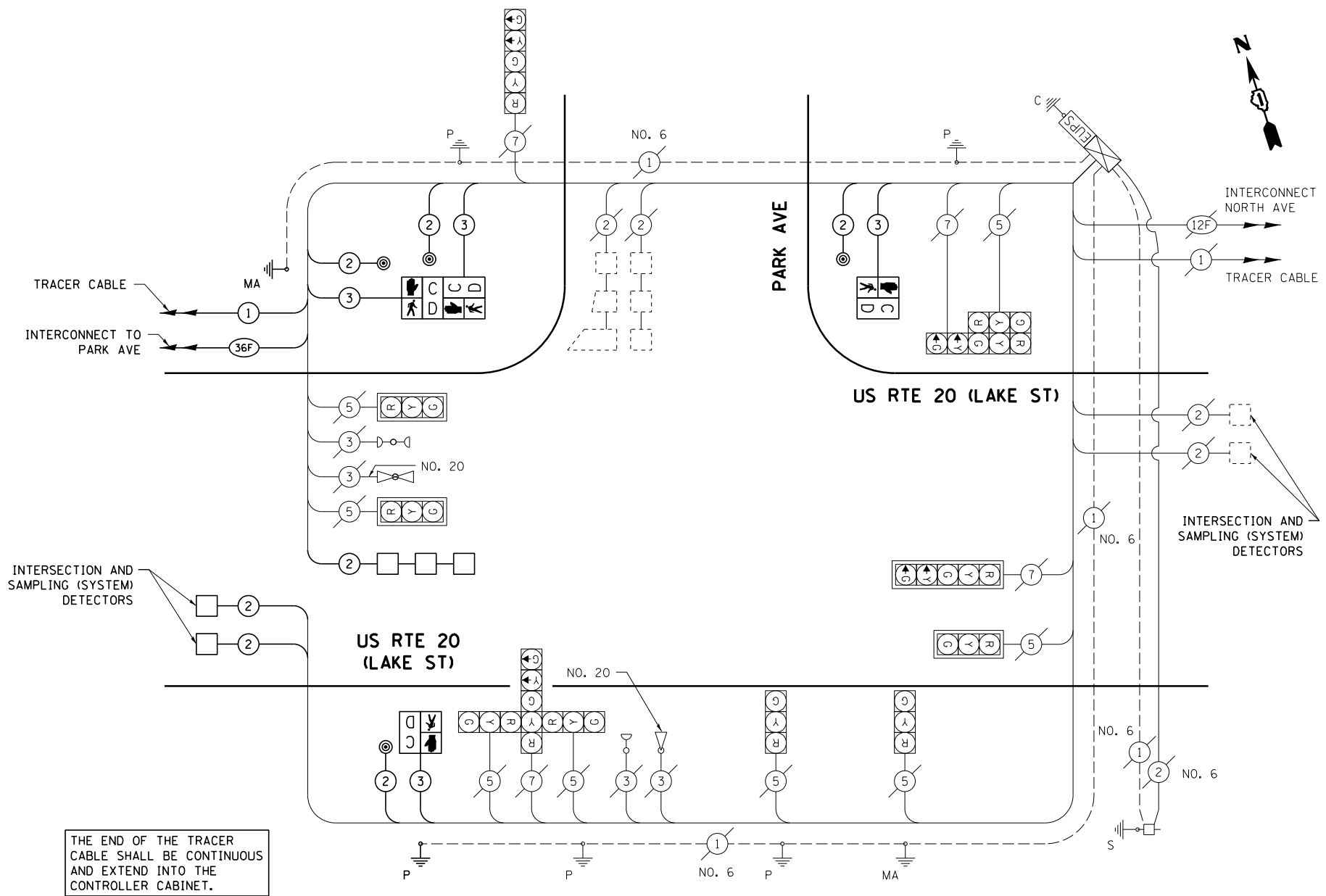


**SCHEDULE OF QUANTITIES**

ITEM DESCRIPTION	UNITS	TOTAL QTY.
REMOVE SIGN PANEL - TYPE 1	SO FT	6
RELOCATE SIGN PANEL - TYPE 1	SO FT	6
UNDERGROUND CONDUIT, GALVANIZED STEEL, 2" DIA.	FOOT	366
UNDERGROUND CONDUIT, GALVANIZED STEEL, 3" DIA.	FOOT	15
HANDHOLE	EACH	1
HEAVY-DUTY HANDHOLE	EACH	1
ELECTRIC CABLE IN CONDUIT, SIGNAL NO. 14 2C	FOOT	725
ELECTRIC CABLE IN CONDUIT, SIGNAL NO. 14 3C	FOOT	753
ELECTRIC CABLE IN CONDUIT, LEAD-IN, NO. 14 1 PAIR	FOOT	731
ELECTRIC CABLE IN CONDUIT, EQUIPMENT GROUNDING CONDUCTOR, NO. 6 1C	FOOT	68
TRAFFIC SIGNAL POST, GALVANIZED STEEL 10 FT.	EACH	1
CONCRETE FOUNDATION, TYPE A	FOOT	4
CONCRETE FOUNDATION, TYPE E 30-INCH DIAMETER	FOOT	14
DRILL EXISTING HANDHOLE	EACH	5
PEDESTRIAN SIGNAL HEAD, LED, 1-FACE, BRACKET MOUNTED WITH COUNTDOWN TIMER	EACH	2
PEDESTRIAN SIGNAL HEAD, LED, 2-FACE, BRACKET MOUNTED WITH COUNTDOWN TIMER	EACH	1
DETECTOR LOOP, TYPE I	FOOT	235
PEDESTRIAN PUSH-BUTTON	EACH	4
TEMPORARY TRAFFIC SIGNAL INSTALLATION	EACH	1
RELOCATE EXISTING SIGNAL HEAD	EACH	2
RELOCATE EXISTING MAST ARM ASSEMBLY AND POLE	EACH	1
RELOCATE EXISTING EMERGENCY VEHICLE PRIORITY SYSTEM, DETECTOR UNIT	EACH	1
MODIFY EXISTING CONTROLLER	EACH	1
MODIFY EXISTING CONTROLLER CABINET	EACH	1
REMOVE AND REINSTALL ELECTRIC CABLE FROM CONDUIT	FOOT	276
REBUILD EXISTING HANDHOLE	EACH	2
REMOVE EXISTING HANDHOLE	EACH	1
REMOVE EXISTING CONCRETE FOUNDATION	EACH	1
TEMPORARY TRAFFIC SIGNAL TIMING	EACH	1

\* 100% COST TO THE VILLAGE OF STREAMWOOD



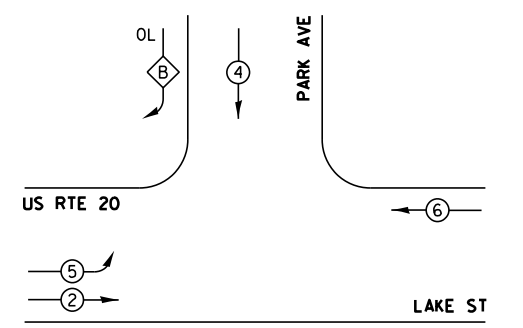
THE END OF THE TRACER CABLE SHALL BE CONTINUOUS AND EXTEND INTO THE CONTROLLER CABINET.

**CABLE PLAN**

I.D.O.T. TRAFFIC SIGNAL INSTALLATION ELECTRICAL SERVICE REQUIREMENTS					TOTAL WATTAGE
TYPE	NO. OF LAMPS	WATTAGE INCAND.	LED	% OPERATION	
SIGNAL (RED)	12		17	0.50	102.00
(YELLOW)	12		25	0.25	75.00
(GREEN)	12		15	0.25	45.00
ARROW	8		12	0.10	9.60
PED. SIGNAL	4		25	1.00	100.00
CONTROLLER	1		100	1.00	100.00
ILLUM. SIGN	-		25	0.05	-
VIDEO SYSTEM	-		150	1.00	-
FLASHER				0.50	
ENERGY COSTS TO:				TOTAL =	431.60

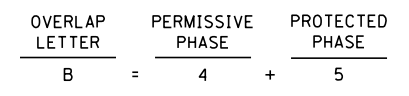
ILLINOIS DEPARTMENT OF TRANSPORTATION  
 DIVISION OF HIGHWAY/DISTRICT 1  
 201 WEST CENTER COURT/SCHAUMBURG, ILLINOIS 60196-1096  
 ENERGY SUPPLY: CONTACT: JOE STACHO  
 PHONE: (630) 424-5704  
 COMPANY: COMED

**EXISTING CONTROLLER SEQUENCE**



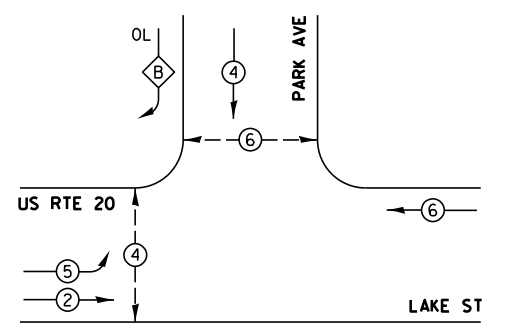
**EXIST. PHASE DESIGNATION DIAGRAM**

**EXISTING AND PROPOSED RIGHT TURN OVERLAP PHASE DESIGNATION**



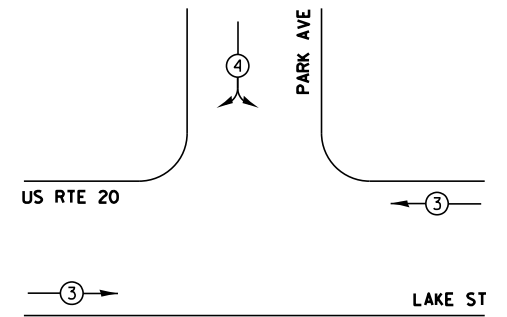
- LEGEND**
- ⊕ DUAL ENTRY PHASE
  - ⊕ SINGLE ENTRY PHASE
  - ⊕ OL OVERLAP
  - ⊕ PEDESTRIAN PHASE
  - \* NUMBER REFERS TO ASSOCIATED PHASE

**PROPOSED CONTROLLER SEQUENCE**



**PROP. PHASE DESIGNATION DIAGRAM**

**EXISTING AND PROPOSED EMERGENCY VEHICLE PREEMPTION SEQUENCE**



EMERGENCY VEHICLE PREEMPTORS		
EMERGENCY VEHICLE PREEMPTOR	3	4
MOVEMENT	← →	↖ ↗

FILE NAME =	USER NAME = poc1echn	DESIGNED - LP	REVISED -
et:\pw\work\p1dot\poc1echn\0318457\157408-TS.dgn		DRAWN - LP	REVISED -
Default	PLOT SCALE = 40.0000' / in.	CHECKED - PB / SM	REVISED -
	PLOT DATE = 1/3/2013	DATE - 01/03/2013	REVISED -

STATE OF ILLINOIS  
DEPARTMENT OF TRANSPORTATION

SCHEDULE OF QUANTITIES, CABLE PLAN, PHASE DESIGNATION DIAGRAM AND EMERGENCY VEHICLE PREEMPTION SEQUENCE  
 US RTE 20 (LAKE ST) AT PARK AVE  
 SCALE: NTS SHEET OF SHEETS STA. TO STA.

F.A.P. RTE.	SECTION	COUNTY	TOTAL SHEETS	SHEET NO.
345	7Y-WRS	COOK	97	57
CONTRACT NO. 60N18				
ILLINOIS FED. AID PROJECT				

TS#1330