

STATE OF ILLINOIS
DEPARTMENT OF TRANSPORTATION
DIVISION OF HIGHWAYS
PROPOSED
HIGHWAY PLANS

F.A.P. RTE.	SECTION	COUNTY	TOTAL SHEETS	SHEET NO.
•	2012-007 I	COOK/WILL	38	1
•	VARIOUS ROUTES	ILLINOIS	CONTRACT NO. 60T53	

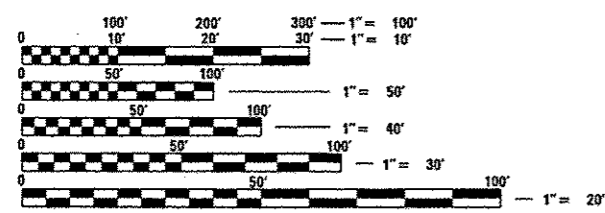
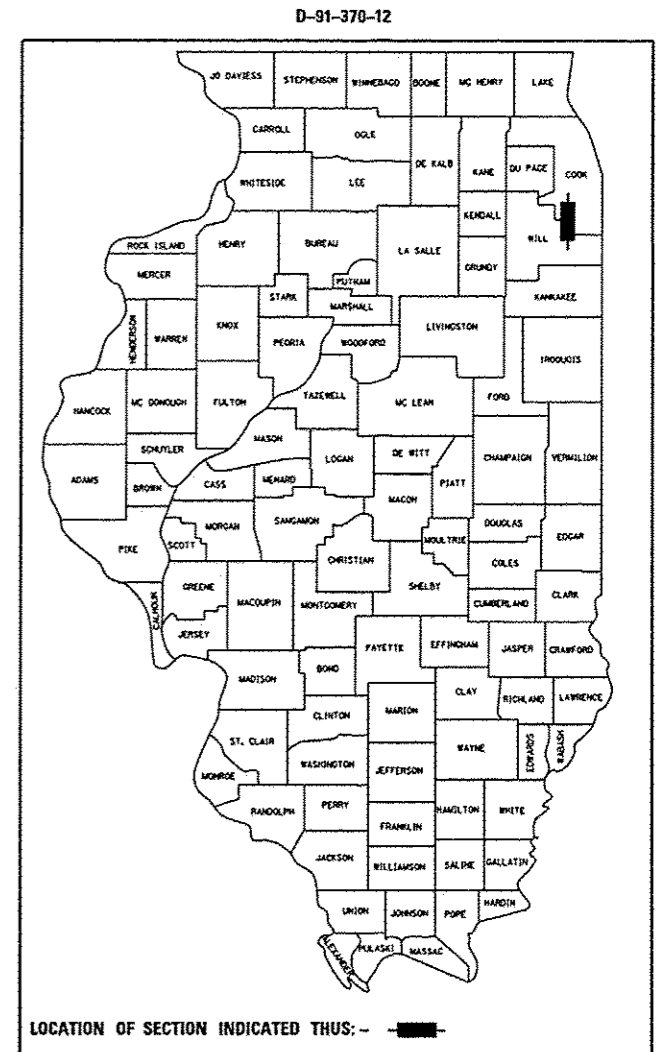
FOR INDEX OF SHEETS, SEE SHEET NO. 2

TRAFFIC DATA:

VINCENNES ROAD EXISTING ADT = 4,800 SPEED LIMIT = 35 MPH	IL 59 EXISTING ADT = 41,300 SPEED LIMIT = 45 MPH
IL 83 EXISTING ADT = 29,600 SPEED LIMIT = 35 MPH	IL 53 EXISTING ADT = 15,000 SPEED LIMIT = 40 MPH
GOVERNOR'S HIGHWAY EXISTING ADT = 18,600 SPEED LIMIT = 45 MPH	RAMP IL 113 EXISTING ADT = 200 SPEED LIMIT = 45 MPH
US 52 EXISTING ADT = 27,500 SPEED LIMIT = 40 MPH	I-57 EXISTING ADT = 30,600 SPEED LIMIT = 65 MPH

THIS PROJECT IS LOCATED IN THE VILLAGES OF GLENWOOD, MATTESON, PEOTONE, AND SHOREWOOD AND IN THE CITIES OF BRAIDWOOD, HARVEY, JOLIET, AND NAPERVILLE

VARIOUS ROUTES
SECTION 2012-007 I
AT VARIOUS SOUTH COOK & WILL COUNTY LOCATIONS
RIP RAP IMPROVEMENTS
COOK & WILL COUNTY
C-91-370-12



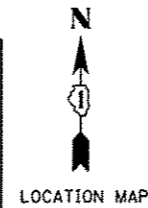
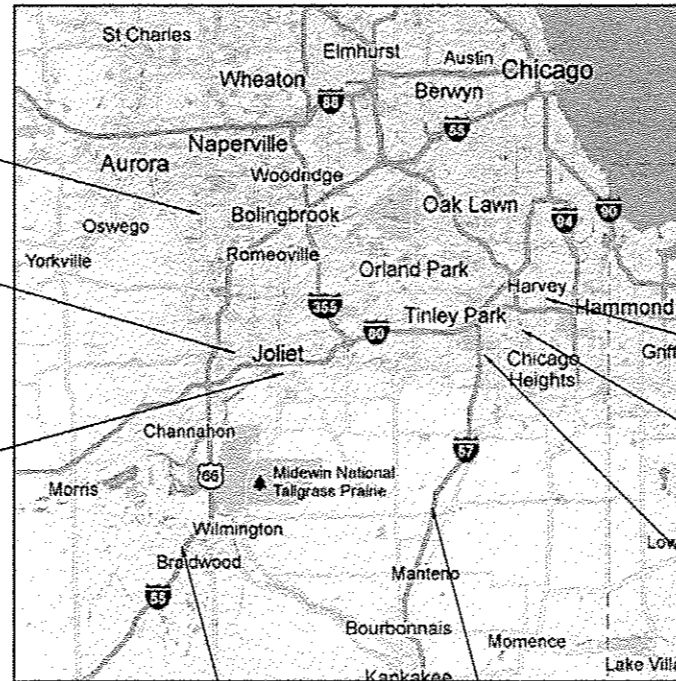
FULL SIZE PLANS HAVE BEEN PREPARED USING STANDARD ENGINEERING SCALES. REDUCED SIZED PLANS WILL NOT CONFORM TO STANDARD SCALES. IN MAKING MEASUREMENTS ON REDUCED PLANS, THE ABOVE SCALES MAY BE USED.

J.U.L.I.E.
 JOINT UTILITY LOCATION INFORMATION FOR EXCAVATION
 1-800-892-0123
 OR 811

LOCATION 8: SN 099-04618
 IL 59 AT CLOW CREEK

LOCATION 5: SN 099-0276
 US 52 OVER DUPAGE RIVER

LOCATION 6: SN 099-0295
 IL 53 AT SUGAR CREEK



LOCATION 2: SN 016-0954
 IL 83 AT LITTLE CALUMET RIVER

LOCATION 1: SN 016-0623
 VICENNES ROAD OVER THORN CREEK

LOCATION 3: SN 016-2505
 GOVERNOR'S HIGHWAY OVER BUTTERFIELD CREEK

LOCATION 7: SN 099-2001
 I-57 AT ROCK CREEK

LOCATION 4: SN 099-0241
 RAMP IL 113 TO I-55 SB
 OVER CLAY POOL CREEK

PROJECT ENGINEER: PETER JOHNSTON (GRAEF) 773-399-0112
PROJECT MANAGER: KEN ENG (IDOT) 847-705-4247

CONTRACT NO. 60T53

PROFESSIONAL ENGINEER'S SIGN & SEAL

 EXPIRES: 11-30-13

STATE OF ILLINOIS
 DEPARTMENT OF TRANSPORTATION
 DIVISION OF HIGHWAYS
 SUBMITTED March 15 2013

 DEPUTY DIRECTOR OF HIGHWAYS, REGION ENGINEER
April 26 2013

 ENGINEER OF DESIGN AND ENVIRONMENT
April 26 2013

 DIRECTOR OF HIGHWAYS, CHIEF ENGINEER

**PRINTED BY THE AUTHORITY
 OF THE STATE OF ILLINOIS**

BLOOM, DUPAGE, PEOTONE, REED, RICH, THORNTON, TROY AND WHEATLAND