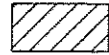


**LEGEND**



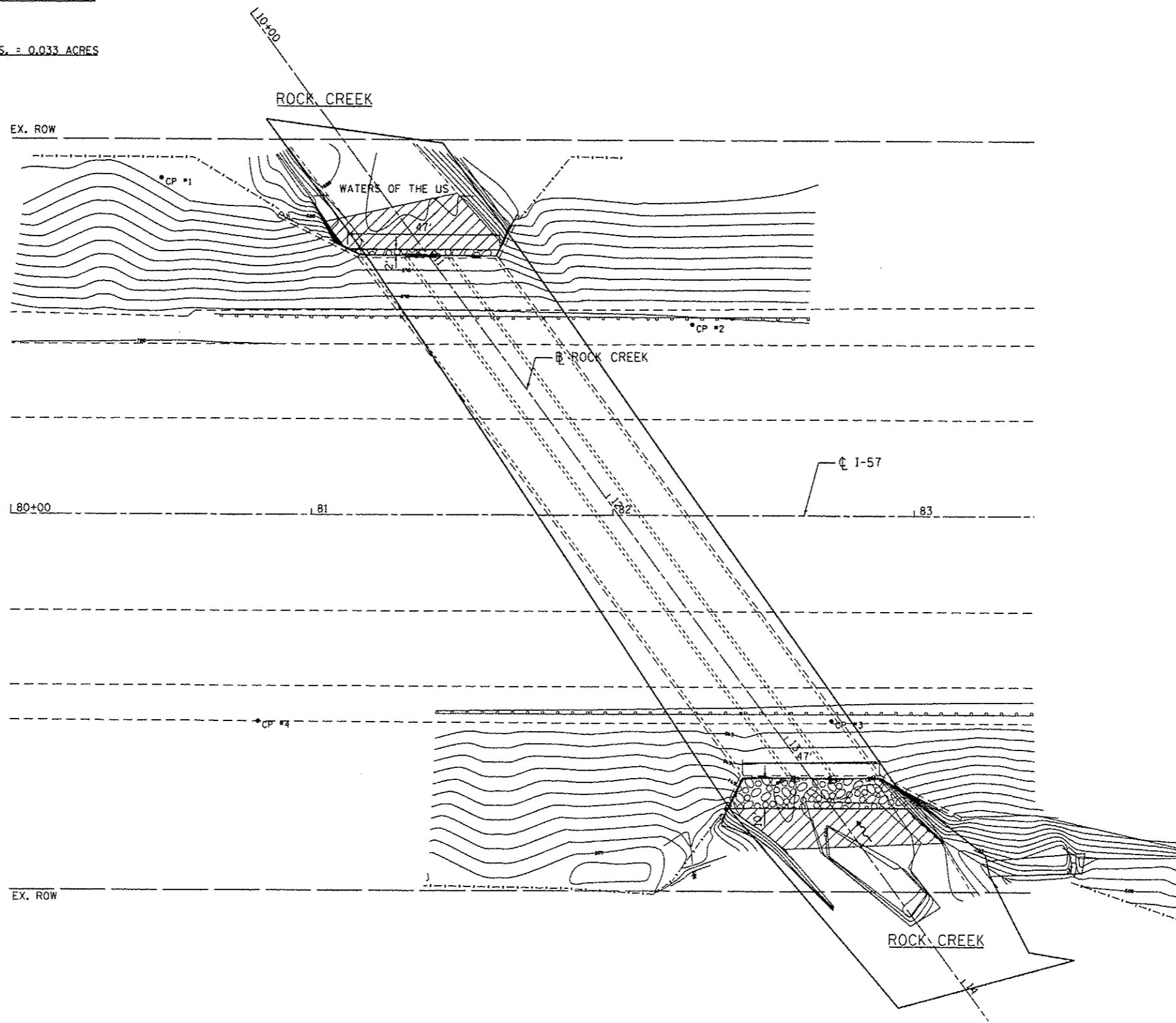
PERMANENT IMPACTS TO THE WATERS OF THE U.S. = 0.015 ACRES  
STONE RIPRAP, CLASS A4 (2' THICK) - 92 TONS



TEMPORARY IMPACTS TO THE WATERS OF THE U.S. = 0.033 ACRES



- CP 1 - SET REBAR IN SOUTH OF ROCK CREEK
- CP 2 - SET PK NAIL IN HMA SHOULDER WEST SIDE OF IL 57  
ELEV. = 699.31
- CP 3 - SET PK NAIL IN HMA SHOULDER EAST OF C IL 57  
ELEV. = 698.68
- CP 4 - SET PK NAIL IN HMA SHOULDER EAST OF C IL 57 SOUTH OF ROCK CREEK



3/12/2013 8:24:38 AM

**GRAEF** 8501 N. Higgins Road, Suite 200  
Chicago, Illinois 60631  
773.399.0112

USER NAME = 1485	DESIGNED -	REVISED -
PLOT SCALE = 48.0000' / 1" =	DRAWN -	REVISED -
PLOT DATE = 3/12/2013	CHECKED -	REVISED -
	DATE = 03/20/2013	REVISED -

STATE OF ILLINOIS  
DEPARTMENT OF TRANSPORTATION

COOK & WILL COUNTY RIP RAP IMPROVEMENTS  
SN 099-2001 I-57 AT ROCK CREEK - EROSION PLAN  
SCALE: 1"=20' SHEET 2 OF 2 SHEETS STA. TO STA.

F.A. RTE.	SECTION	COUNTY	TOTAL SHEETS	SHEET NO.
•	2012-007 I	COOK/WILL	38	27
• VARIOUS ROUTES			CONTRACT NO. 60T53	
ILLINOIS FED. AID PROJECT				