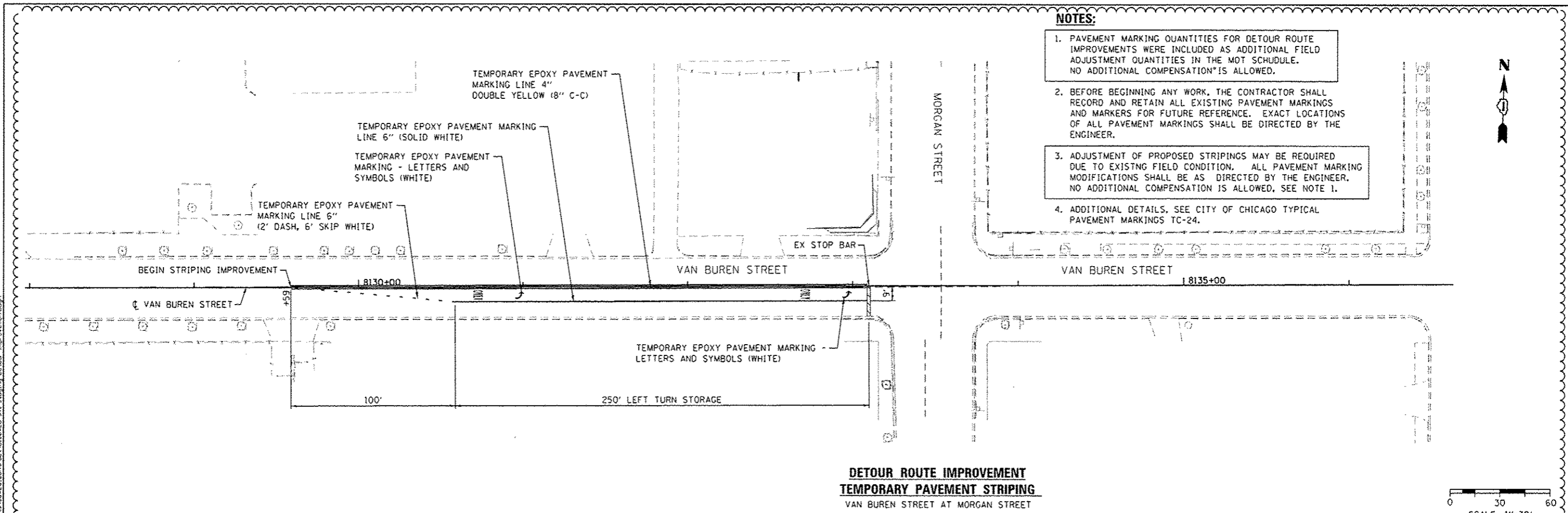
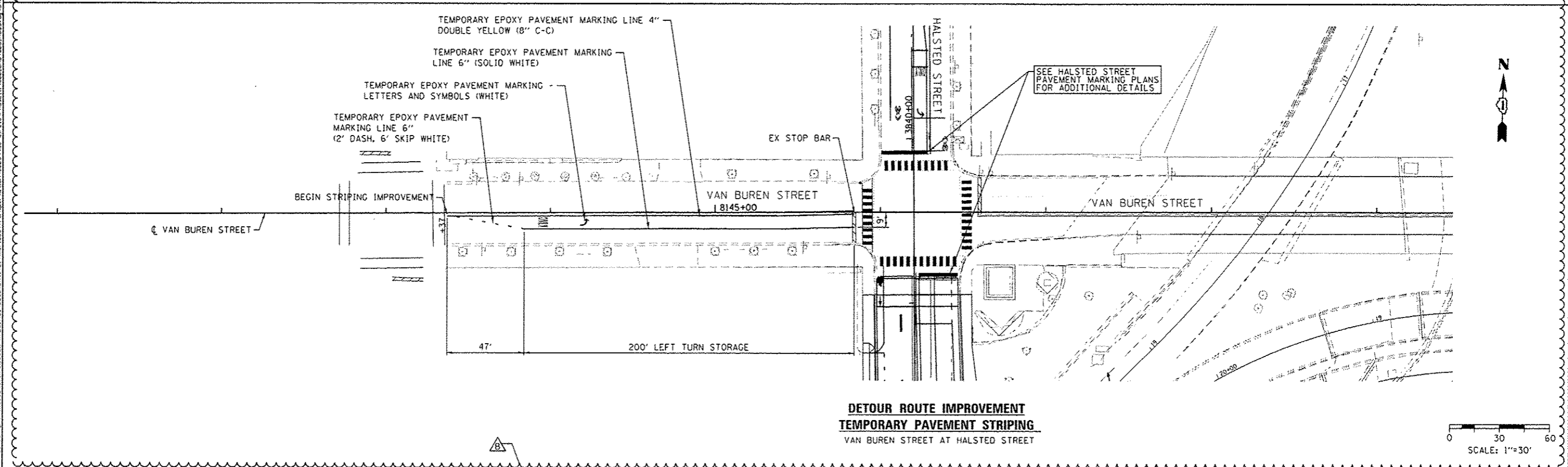
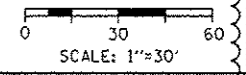


NOTES:

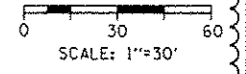
1. PAVEMENT MARKING QUANTITIES FOR DETOUR ROUTE IMPROVEMENTS WERE INCLUDED AS ADDITIONAL FIELD ADJUSTMENT QUANTITIES IN THE MOT SCHEDULE. NO ADDITIONAL COMPENSATION IS ALLOWED.
2. BEFORE BEGINNING ANY WORK, THE CONTRACTOR SHALL RECORD AND RETAIN ALL EXISTING PAVEMENT MARKINGS AND MARKERS FOR FUTURE REFERENCE. EXACT LOCATIONS OF ALL PAVEMENT MARKINGS SHALL BE DIRECTED BY THE ENGINEER.
3. ADJUSTMENT OF PROPOSED STRIPINGS MAY BE REQUIRED DUE TO EXISTING FIELD CONDITION. ALL PAVEMENT MARKING MODIFICATIONS SHALL BE AS DIRECTED BY THE ENGINEER. NO ADDITIONAL COMPENSATION IS ALLOWED, SEE NOTE 1.
4. ADDITIONAL DETAILS, SEE CITY OF CHICAGO TYPICAL PAVEMENT MARKINGS TC-24.



**DETOUR ROUTE IMPROVEMENT
TEMPORARY PAVEMENT STRIPING**
VAN BUREN STREET AT MORGAN STREET



**DETOUR ROUTE IMPROVEMENT
TEMPORARY PAVEMENT STRIPING**
VAN BUREN STREET AT HALSTED STREET



FILE PATH: p:\1\388231-p\unt\lansett\online\local\p\4500008\Documents\01_America\17\emp\ca\lucan\682699738_Circle\Phase 1\1003_C001_026_Road-By-Street\162726_Contract\1016126-Strategic Detour-Improvement.dgn



0160426-Strategic Detour-Improvement.dgn
 USER NAME: pmserna
 PLOT SCALE: 60.0000 / 1 in.
 PLOT DATE: 10/25/2013

DESIGNED - OPS	REVISED - 10/24/2013
DRAWN - OPS	REVISED -
CHECKED - DBM	REVISED -
DATE - 9/15/13	REVISED -

STATE OF ILLINOIS
 DEPARTMENT OF TRANSPORTATION

SCALE: 1"=30'	SHEET 1 OF 1 SHEETS	STA. TO STA.
---------------	---------------------	--------------

F.A.I. RTE.	SECTION	COUNTY	TOTAL SHEETS	SHEET NO.
90/94/290	2013-008R	COOK	559	70A
CONTRACT NO. 60W26				
ILLINOIS FED. AID PROJECT				