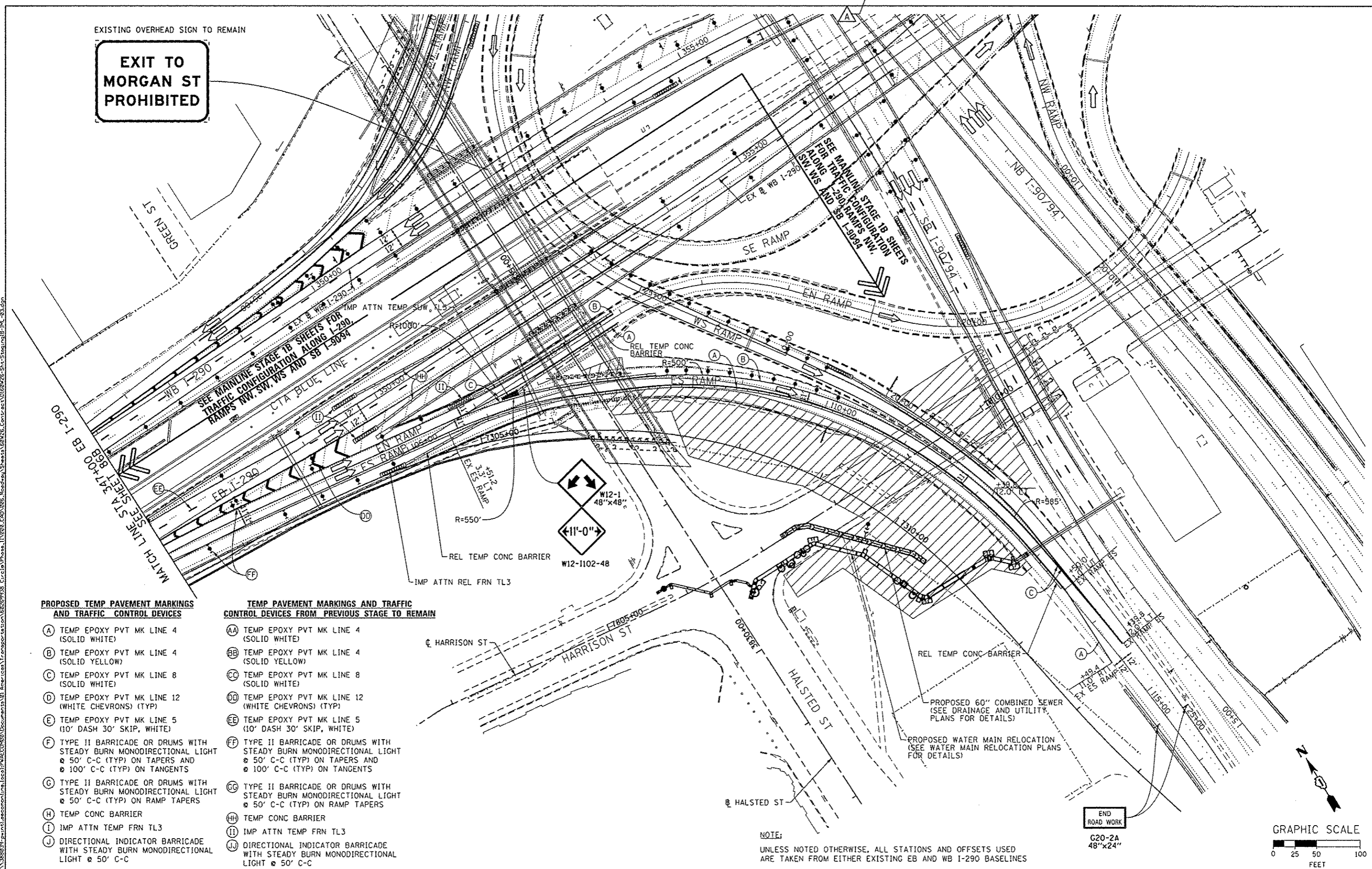


EXISTING OVERHEAD SIGN TO REMAIN

**EXIT TO
MORGAN ST
PROHIBITED**



PROPOSED TEMP PAVEMENT MARKINGS AND TRAFFIC CONTROL DEVICES

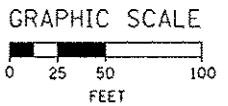
- (A) TEMP EPOXY PVT MK LINE 4 (SOLID WHITE)
- (B) TEMP EPOXY PVT MK LINE 4 (SOLID YELLOW)
- (C) TEMP EPOXY PVT MK LINE 8 (SOLID WHITE)
- (D) TEMP EPOXY PVT MK LINE 12 (WHITE CHEVRONS) (TYP)
- (E) TEMP EPOXY PVT MK LINE 5 (10' DASH 30' SKIP, WHITE)
- (F) TYPE II BARRICADE OR DRUMS WITH STEADY BURN MONODIRECTIONAL LIGHT @ 50' C-C (TYP) ON TAPERS AND @ 100' C-C (TYP) ON TANGENTS
- (G) TYPE II BARRICADE OR DRUMS WITH STEADY BURN MONODIRECTIONAL LIGHT @ 50' C-C (TYP) ON RAMP TAPERS
- (H) TEMP CONC BARRIER
- (I) IMP ATTN TEMP FRN TL3
- (J) DIRECTIONAL INDICATOR BARRICADE WITH STEADY BURN MONODIRECTIONAL LIGHT @ 50' C-C

TEMP PAVEMENT MARKINGS AND TRAFFIC CONTROL DEVICES FROM PREVIOUS STAGE TO REMAIN

- (AA) TEMP EPOXY PVT MK LINE 4 (SOLID WHITE)
- (BB) TEMP EPOXY PVT MK LINE 4 (SOLID YELLOW)
- (CC) TEMP EPOXY PVT MK LINE 8 (SOLID WHITE)
- (DD) TEMP EPOXY PVT MK LINE 12 (WHITE CHEVRONS) (TYP)
- (EE) TEMP EPOXY PVT MK LINE 5 (10' DASH 30' SKIP, WHITE)
- (FF) TYPE II BARRICADE OR DRUMS WITH STEADY BURN MONODIRECTIONAL LIGHT @ 50' C-C (TYP) ON TAPERS AND @ 100' C-C (TYP) ON TANGENTS
- (GG) TYPE II BARRICADE OR DRUMS WITH STEADY BURN MONODIRECTIONAL LIGHT @ 50' C-C (TYP) ON RAMP TAPERS
- (HH) TEMP CONC BARRIER
- (II) IMP ATTN TEMP FRN TL3
- (JJ) DIRECTIONAL INDICATOR BARRICADE WITH STEADY BURN MONODIRECTIONAL LIGHT @ 50' C-C

NOTE:
UNLESS NOTED OTHERWISE, ALL STATIONS AND OFFSETS USED ARE TAKEN FROM EITHER EXISTING EB AND WB I-290 BASELINES

END ROAD WORK
G20-2A
48"x24"



D:\6026-Sht-Staging1B-1ML-03.dgn
USER NAME = pmsarno
PLOT SCALE = 50.0000 / in.
PLOT DATE = 10/14/2013

DESIGNED - OPS	REVISED - 10/15/2013
DRAWN - OPS	REVISED -
CHECKED - DBM	REVISED -
DATE - 9/15/13	REVISED -

STATE OF ILLINOIS
DEPARTMENT OF TRANSPORTATION

SUGGESTED STAGES OF CONSTRUCTION AND TRAFFIC CONTROL	
MAINLINE STAGING 1B-1	
SCALE: 1" = 50'	SHEET 3 OF 3 SHEETS
STA.	TO STA.

F.A.I. RTE.	SECTION	COUNTY	TOTAL SHEETS	SHEET NO.
90/94/290	2013-008R	COOK	559	86C
CONTRACT NO. 60W26				
ILLINOIS FED. AID PROJECT				