

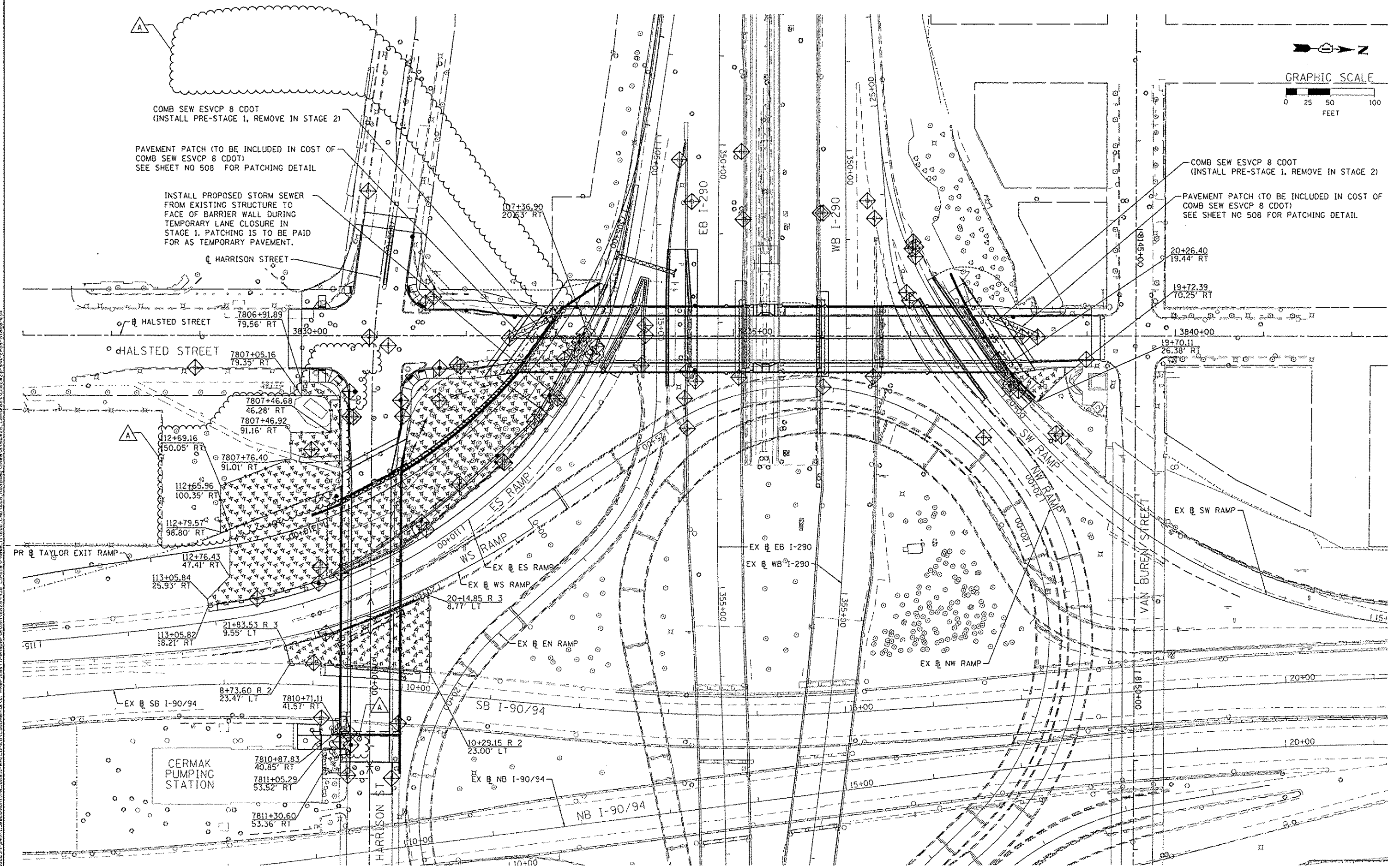
COMB SEW ESVCP 8 CDOT  
(INSTALL PRE-STAGE 1, REMOVE IN STAGE 2)

PAVEMENT PATCH (TO BE INCLUDED IN COST OF COMB SEW ESVCP 8 CDOT)  
SEE SHEET NO 508 FOR PATCHING DETAIL

COMB SEW ESVCP 8 CDOT  
(INSTALL PRE-STAGE 1, REMOVE IN STAGE 2)

PAVEMENT PATCH (TO BE INCLUDED IN COST OF COMB SEW ESVCP 8 CDOT)  
SEE SHEET NO 508 FOR PATCHING DETAIL

INSTALL PROPOSED STORM SEWER FROM EXISTING STRUCTURE TO FACE OF BARRIER WALL DURING TEMPORARY LANE CLOSURE IN STAGE 1. PATCHING IS TO BE PAID FOR AS TEMPORARY PAVEMENT.



FILE PATH: \\s011388239-02\int\lecomonline\local\AECOM\2013\Documents\11\0800\_CAD\306\_Roadway\Sheet\26-Eros-Stage-01A

<b>AECOM</b> TransSystems	0168026-sh1-Eros-Stage-01A	DESIGNED - AFC	REVISED - $\Delta$ 10/15/2013	<b>STATE OF ILLINOIS</b> <b>DEPARTMENT OF TRANSPORTATION</b>	<b>EROSION AND SEDIMENTATION CONTROL PLAN</b> <b>STAGE 1A</b>	F.A.I. RTE.	SECTION	COUNTY	TOTAL SHEETS	SHEET NO.
	USER NAME = jslavonne	DRAWN - AFC	REVISED -			90/94/290	2013-008R	COOK	559	124
	PLOT SCALE = 5/8" = 1' / in.	CHECKED - DBM	REVISED -		SCALE: 1"=50'	SHEET 1 OF 5 SHEETS STA. TO STA.		CONTRACT NO. 60W26		
	PLOT DATE = 10/14/2013	DATE - 9/15/13	REVISED -			ILLINOIS FED. AID PROJECT				