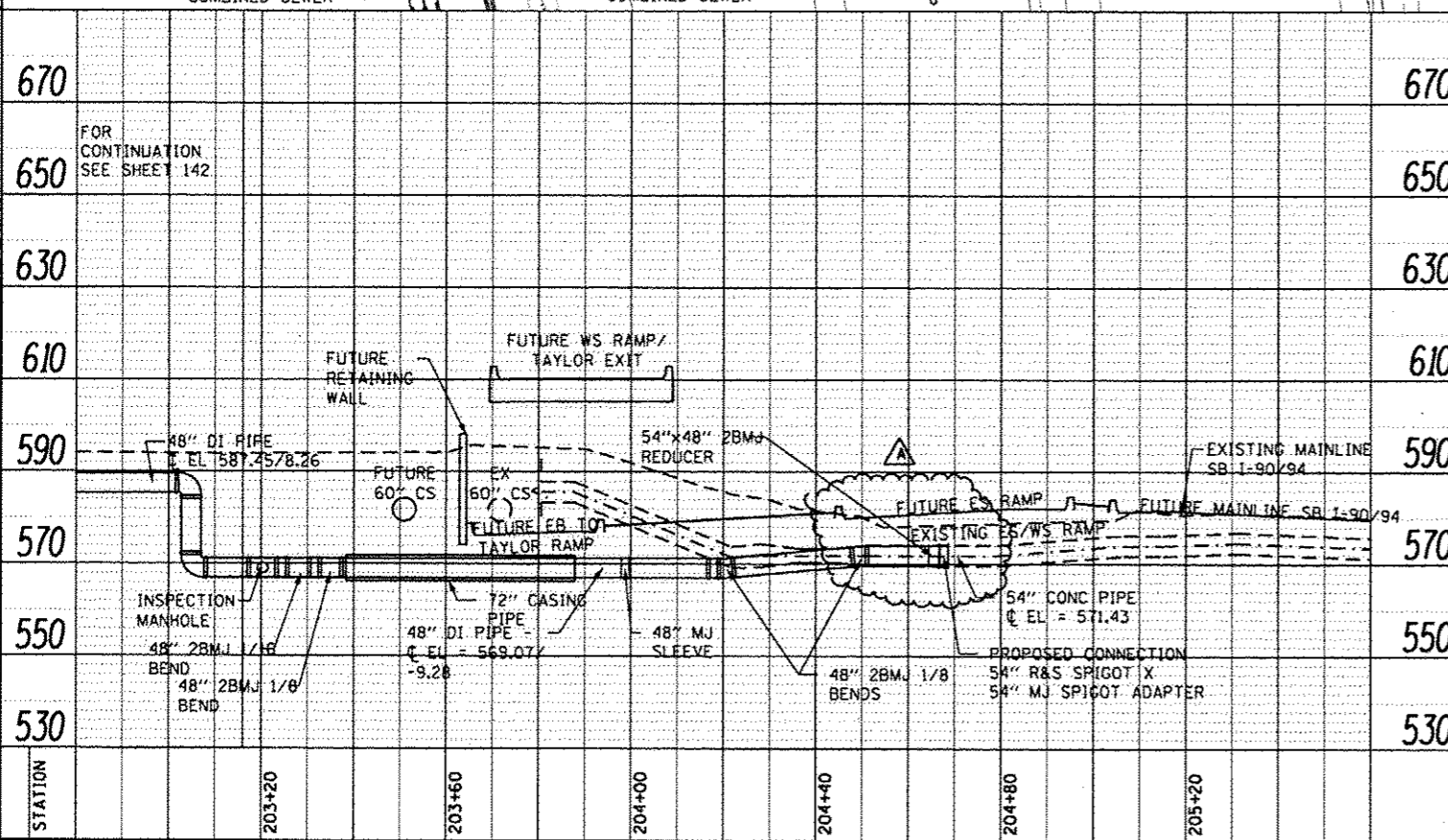
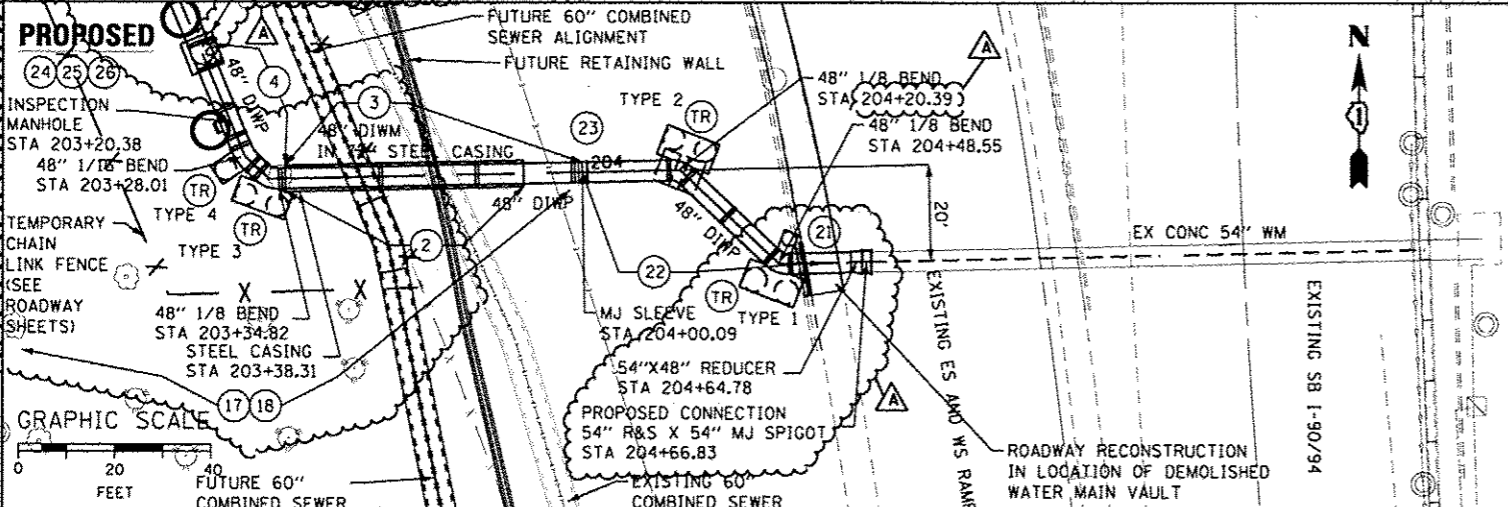
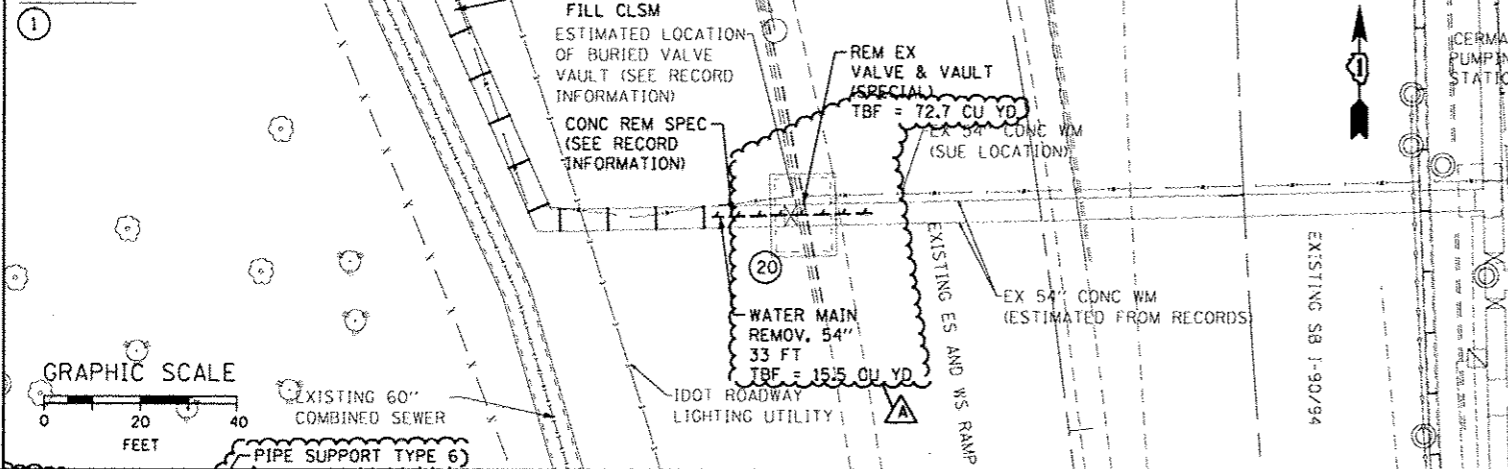


EXISTING



CONSTRUCTION/SEQUENCING NOTES:

THE LIMITS FOR REMOVAL AND ABANDONMENT OF EXISTING WATER MAIN PIPES MUST BE DETERMINED AS PART OF STAGING REQUIREMENTS AND CONSTRUCTION LIMITS FOR SEWER AND WATER MAIN CONSTRUCTION.

EXISTING THRUST RESTRAINTS NOT SHOWN FOR CLARITY. SEE RECORD INFORMATION FOR ANTICIPATED THRUST RESTRAINT LOCATIONS AND DIMENSIONS.

1. CONTACT CDWM FOR SHUTDOWN OF WATER MAIN (312-744-5070). DEWATER EXISTING PIPELINE.
2. INSTALL 72" STEEL CASING PIPE UNDER LOCATION OF EXISTING 60" COMBINED SEWER, FUTURE RETAINING WALL, AND FUTURE 60" COMBINED SEWER.
3. INSTALL 48" CARRIER PIPE IN CASING PIPE. TEMPORARILY PLUG OR CAP, AND BRACE EAST END AND INSTALL A 2" TAP FOR PRESSURE TESTING.
4. INSTALL 1-48" X 1/8" HORIZONTAL BEND, 1-48" X 1/16" HORIZONTAL BEND, 1-48" X 24" TEE WITH MJ PLUG FOR INSPECTION MANHOLE AND 2-48" X 1/4" VERTICAL BENDS AS SHOWN TO ADJUST GRADE AND ALIGNMENT OF PIPELINE. SEE SHEETS 142-143 FOR ADDITIONAL NOTES
17. CLOSE 48" BUTTERFLY VALVE AND PRESSURE TEST NEW 48" AND 24" WATER MAIN SEGMENTS TO 100 PSI IN ACCORDANCE WITH THE CONTRACT DOCUMENTS.
18. AFTER APPROVAL OF PRESSURE TEST, DEWATER THE NEW WATER MAIN IN PREPARATION FOR MAKING THE FINAL CONNECTIONS. SEE SHEETS 142-143 FOR ADDITIONAL NOTES
20. DEMOLISH THE EXISTING 36" VALVE AND VAULT. REMOVE 54" X 36" CONCRETE REDUCER EAST OF THE VAULT. DEMOLITION WORK MAY NEED TO BE COMPLETED AT MULTIPLE TIMES DUE TO TRAFFIC STAGING ON ADJACENT RAMP.
21. CONNECT TO EXISTING 54" WATER MAIN WITH 54" R&S SPIGOT X 54" MJ SPIGOT ADAPTER AND 54" X 48" 2BMJ REDUCER. FIELD WELD THE ADAPTER TO THE EXISTING PIPE AND THE REDUCER TO PROVIDE BOTH A RESTRAINED JOINT AND WATERTIGHT SEAL. FOLLOW THE PIPE MANUFACTURER'S RECOMMENDED FIELD WELDING PROCEDURES.
22. INSTALL 48" PIPE AND 2-48" X 1/8" BENDS TO THE WEST AS SHOWN TO ADJUST GRADE AND ALIGNMENT OF PIPELINE.
23. CONNECT TO 48" PIPE WITH 1-48" MJ SLEEVE.
24. CONTACT CDWM TO OPERATE VALVES FOR FILLING AND FLUSHING WATER MAIN.
25. THOROUGHLY FLUSH WATER MAIN USING FIRE HYDRANT AND 2" TAPS. DISINFECT PER THE CONTRACT DOCUMENTS. AFTER APPROVAL OF DISINFECTION, WATER MAIN MAY BE PUT INTO SERVICE.
26. RESTORE ALL WATER MAIN TRENCHES PER THE DETAILED DRAWING.

(TR) = THRUST RESTRAINT PER THRUST RESTRAINT DETAIL SHEETS FOR THRUST RESTRAINT TYPES AND DETAILS, SEE SHEETS 147 THROUGH 149.

| | |
|-------------|--|
| DATE | |
| BY | |
| REVISION | |
| NO. | |
| DESCRIPTION | |
| DATE | |
| BY | |
| REVISION | |
| NO. | |
| DESCRIPTION | |
| DATE | |
| BY | |
| REVISION | |
| NO. | |
| DESCRIPTION | |

| | |
|-------------|--|
| DATE | |
| BY | |
| REVISION | |
| NO. | |
| DESCRIPTION | |
| DATE | |
| BY | |
| REVISION | |
| NO. | |
| DESCRIPTION | |
| DATE | |
| BY | |
| REVISION | |
| NO. | |
| DESCRIPTION | |



| | |
|------------------------|----------------------|
| DESIGNED - HHC | REVISED - 10/15/2013 |
| USER NAME - Cooper-M2 | REVISED - |
| DRAWN - HHC | REVISED - |
| CHECKED - RBB | REVISED - |
| DATE - 8/20/13 | REVISED - |
| PLOT DATE - 10/15/2013 | |

STATE OF ILLINOIS
DEPARTMENT OF TRANSPORTATION

WATER MAIN
PLAN AND PROFILE

SCALE: SHEET OF SHEETS STA. TO STA.

| | | | | |
|---------------------------|-----------|--------|--------------|-----------|
| F.A.I. RTE. | SECTION | COUNTY | TOTAL SHEETS | SHEET NO. |
| 90/94/290 | 2013-007R | COOK | 559 | 141 |
| CONTRACT NO. 60W26 | | | | |
| ILLINOIS FED. AID PROJECT | | | | |