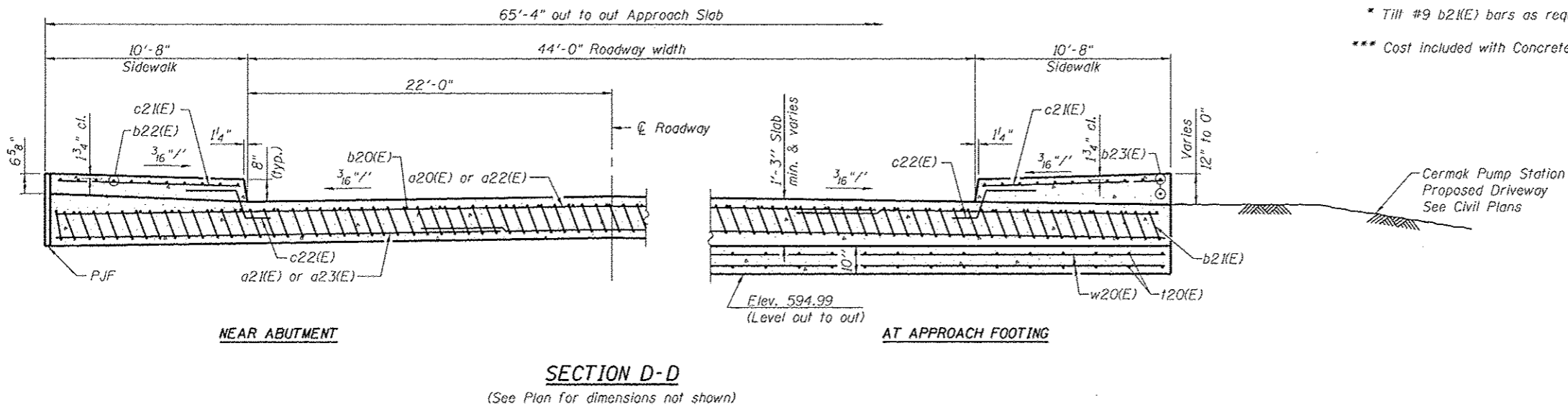
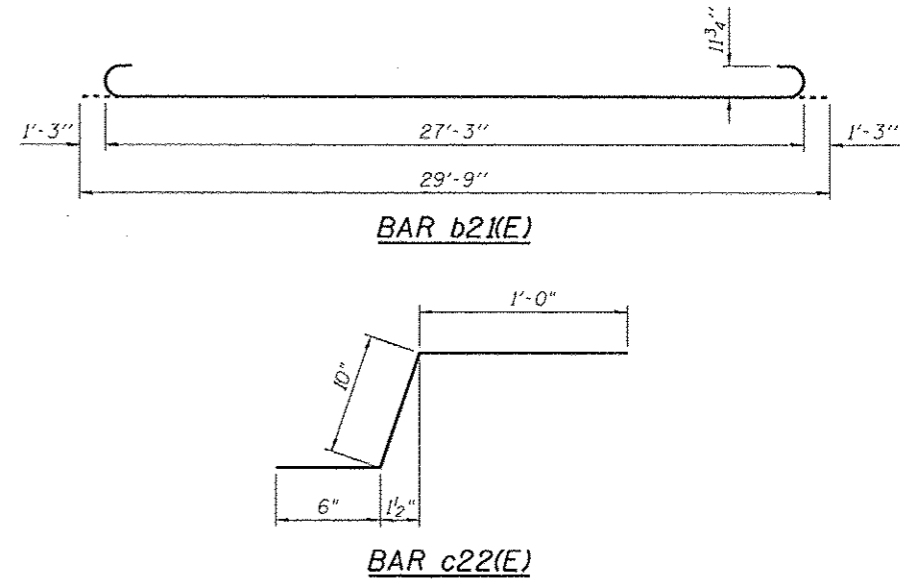
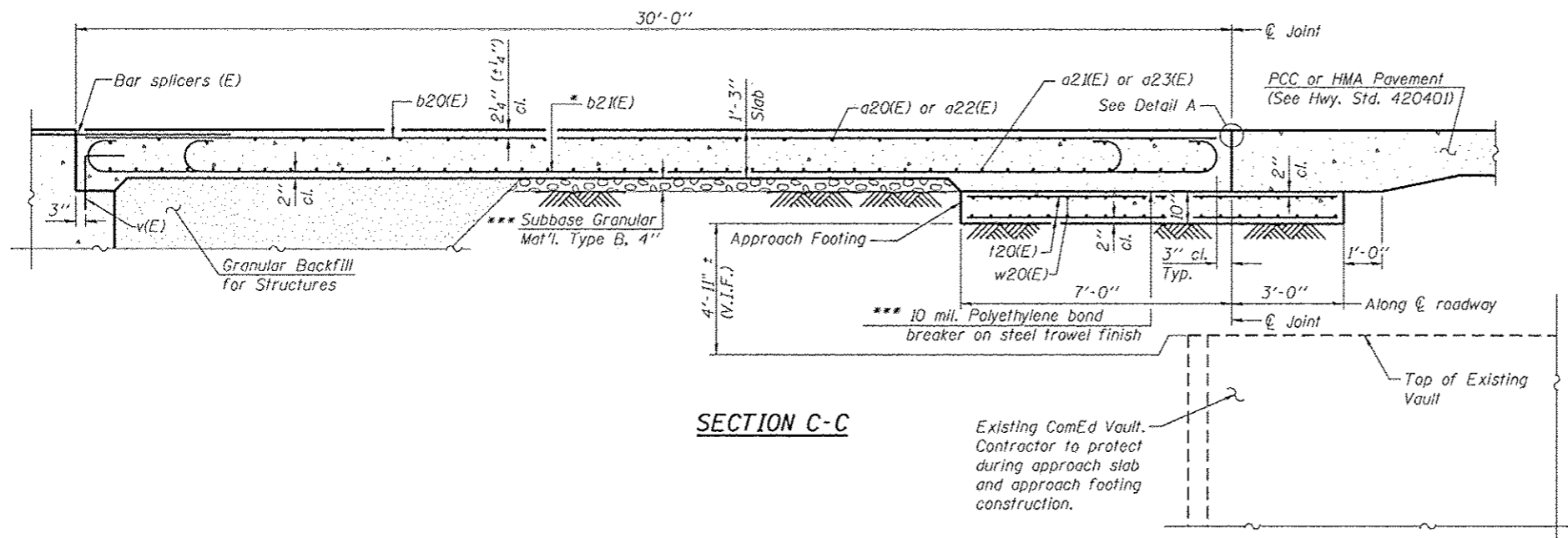


NOTES:

See sheet S1-25 of S1-48 for Detail A.
 Approach slab concrete shall be paid for as Concrete Superstructure.
 Approach footing concrete shall be paid for as Concrete Structures.
 Reinforcement shall be paid for as Reinforcement Bars, Epoxy Coated.
 For v(E) bar details, see sheet S1-39.
 The approach footing maximum applied service bearing pressure (Qmax) = 2.0 ksf.
 For bar splicer details, see sheet S1-45.
 Cost of excavation for approach footing included with Concrete Structures.
 For Granular Backfill for Structures details, see sheet S1-03.
 V.I.F. = Contractor to verify in field.



* Till #9 b21(E) bars as required to maintain clearance.
 *** Cost included with Concrete Superstructure.

BILL OF MATERIAL

Bar	No.	Size	Length	Shape
a20(E)	25	#4	10'-0"	—
a21(E)	46	#5	28'-3"	—
a22(E)	25	#4	27'-7"	—
a23(E)	46	#5	10'-0"	—
a24(E)	16	#5	3'-6"	—
b20(E)	53	#4	29'-8"	—
b21(E)	157	#9	29'-9"	U
b22(E)	11	#5	29'-8"	—
b23(E)	12	#5	11'-5"	—
c21(E)	44	#5	10'-4"	—
c22(E)	44	#5	2'-4"	J
120(E)	132	#4	9'-8"	—
w20(E)	80	#5	34'-2"	—
Concrete Superstructure		Cu. Yd.	103	
Concrete Structures		Cu. Yd.	21	
Reinforcement Bars, Epoxy Coated		Pound	26170	
Protective Coat		Sq. Yd.	205	
Bridge Deck Grooving		Sq. Yd.	159	

0161713-60W26-526-Appr-S1cb



USER NAME = kr11zm	DESIGNED - EJO	REVISED - 10/15/2013 EJO, MRK
PLOT SCALE = N.T.S.	CHECKED - ATB	REVISED
PLOT DATE = 9/15/2013	DRAWN - BRD	REVISED
	CHECKED - EJO	REVISED

STATE OF ILLINOIS
 DEPARTMENT OF TRANSPORTATION

EAST APPROACH SLAB DETAILS
 STRUCTURE NO. 016-1713

SHEET NO. S1-26 OF S1-48 SHEETS

F.A.I. RTE.	SECTION	COUNTY	TOTAL SHEETS	SHEET NO.
90/94/290	2013-00BR	COOK	559	276
CONTRACT NO. 60W26			ILLINOIS FED. AID PROJECT	