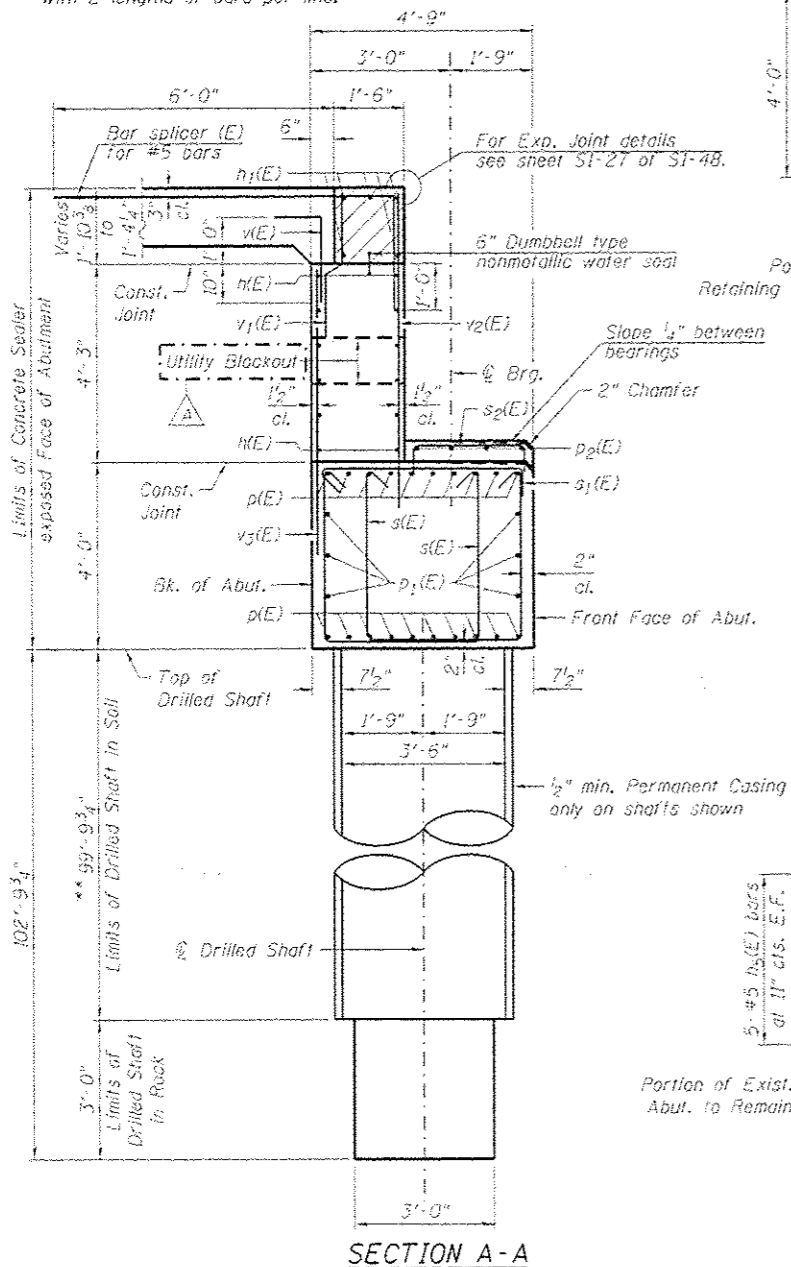
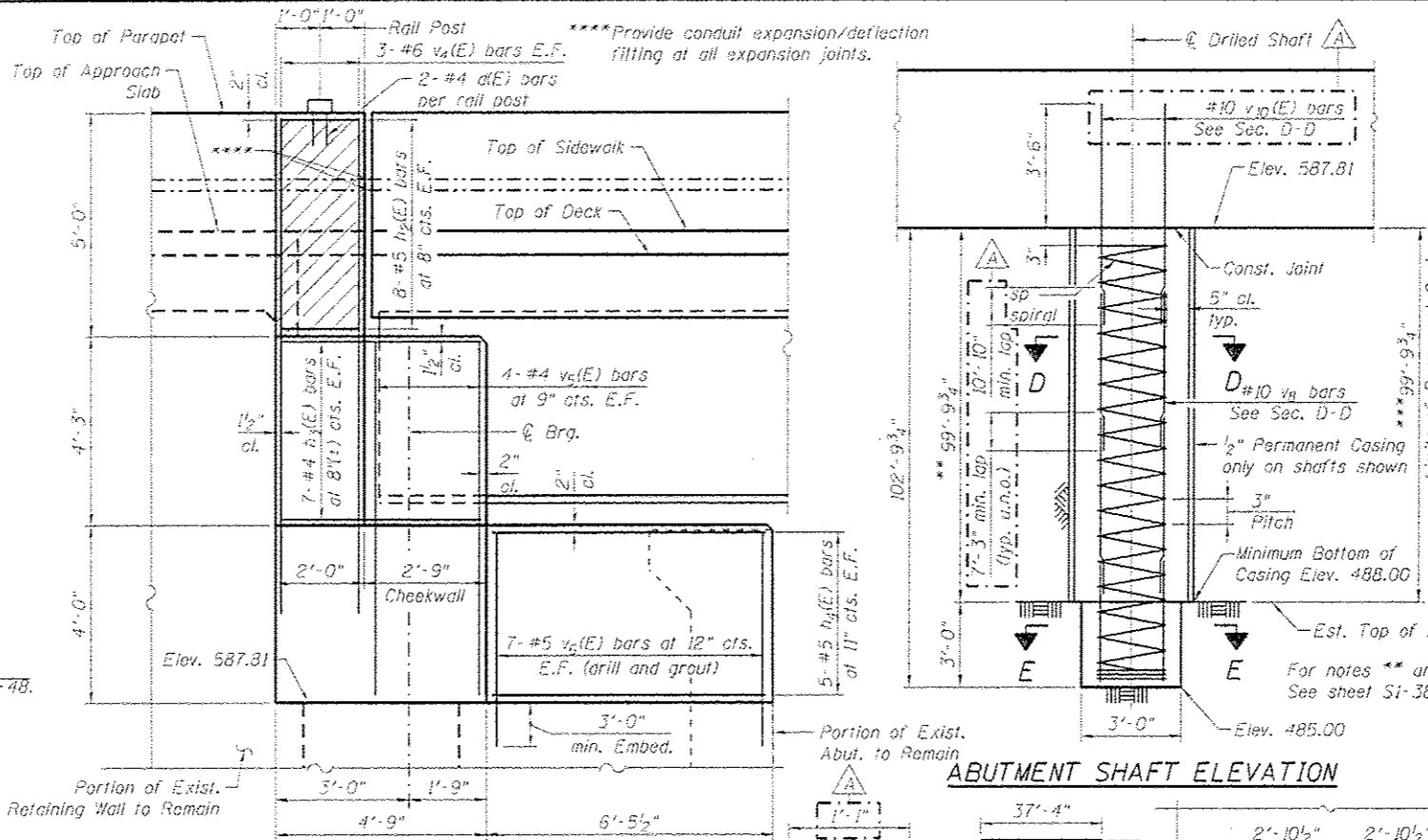


NOTES:

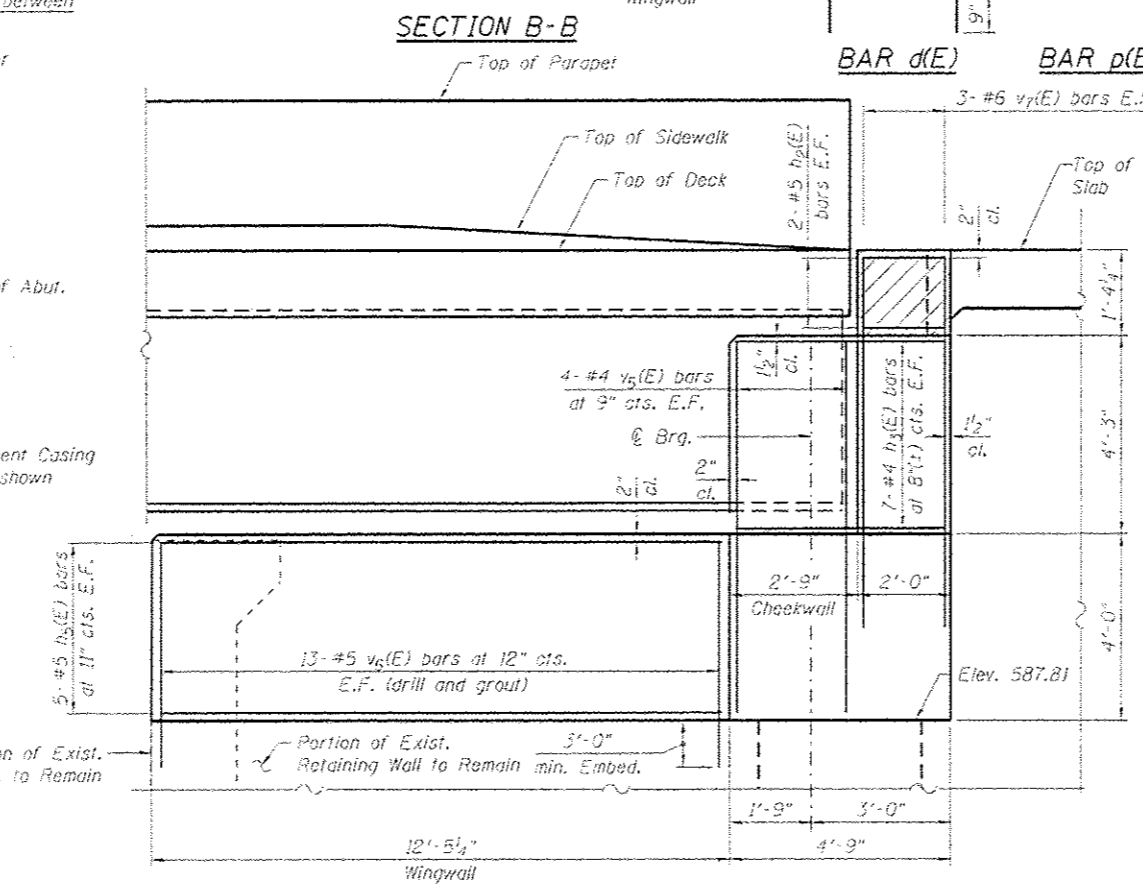
- Hatched area to be poured after superstructure false work has been removed. Quantity of concrete included with Concrete Superstructure.
- Concrete Sealer shall be applied to abutment backwall, bearing seats and exposed faces of abutment cap, cheekwalls and wingwalls.
- When splicing spiral reinforcement is necessary, the spiral shall be provided with 1/2 extra turns at the ends to be spliced. These additional turns shall either be welded together according to AWS D1.4 or shall both terminate with a 135° standard hook.
- E.F. = Each Face
- Drilling and grouting of v6(E) bars are included with Reinforcement Bars, Epoxy Coated pay item.
- For Pipe Underdrain detail see sheet S1-03.
- Bars noted thus, 3x2-#5 indicates 3 lines of bars with 2 lengths of bars per line.



SECTION A-A

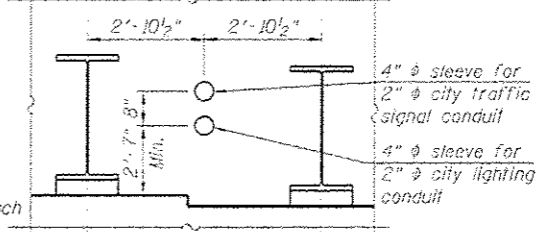


ABUTMENT SHAFT ELEVATION

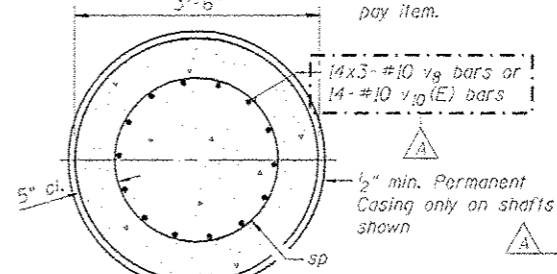


SECTION B-B

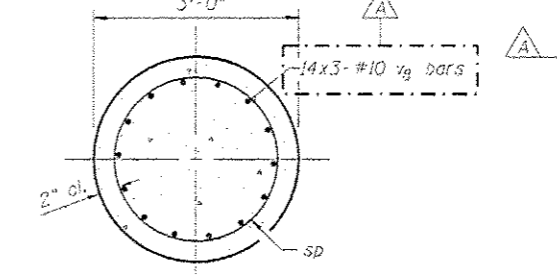
SECTION C-C



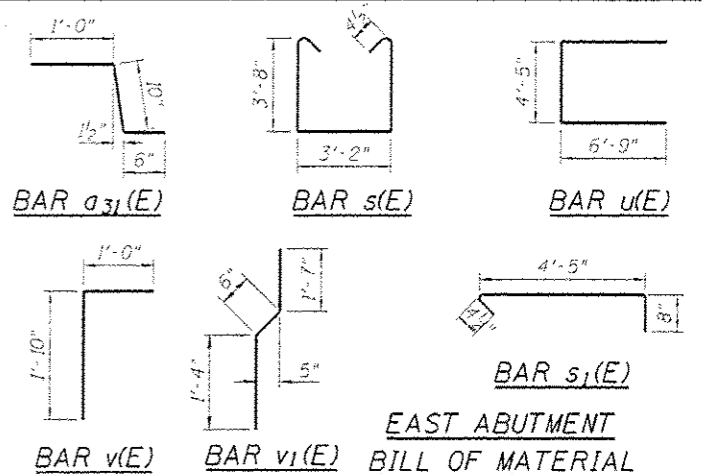
DETAIL 5



SECTION D-D



SECTION E-E



EAST ABUTMENT
BILL OF MATERIAL

Bar	No.	Size	Length	Shape
a30(E)	2	#5	10'-4"	
a31(E)	2	#5	2'-4"	
b30(E)	11	#5	3'-10"	
d(E)	2	#4	2'-7"	
h(E)	36	#5	24'-10"	
h1(E)	10	#6	35'-11"	
h2(E)	20	#5	1'-8"	
h3(E)	28	#4	4'-5"	
h4(E)	10	#5	6'-1"	
h5(E)	10	#5	12'-1"	
h6(E)	24	#5	9'-6"	
h7(E)	8	#5	5'-0"	
p(E)	40	#8	38'-8"	
p1(E)	12	#8	37'-5"	
p2(E)	4	#5	22'-8"	
s(E)	178	#4	11'-3"	
s1(E)	89	#4	5'-5 1/2"	
s2(E)	23	#4	3'-9"	
sp	6	#5	102'-6"	
u(E)	10	#8	17'-11"	
v(E)	66	#5	2'-10"	
v1(E)	66	#5	3'-5"	
v2(E)	66	#6	7'-1"	
v3(E)	66	#6	6'-3"	
v4(E)	6	#6	11'-2"	
v5(E)	16	#4	7'-11"	
v6(E)	40	#5	7'-0"	
v7(E)	5	#6	7'-6"	
v8	252	#10	32'-1"	
v9(E)	24	#5	3'-0"	
v10(E)	84	#10	35'-8"	
Granular Backfill for Structures		Cu. Yd.	145	
Structure Excavation		Cu. Yd.	492	
Concrete Structures		Cu. Yd.	78	
Concrete Superstructure		Cu. Yd.	6	
Reinforcement Bars		Pound	65690	
Reinforcement Bars, Epoxy Coated		Pound	25020	
Permanent Casing		Foot	200	
Drilled Shaft in Soil		Cu. Yd.	214	
Drilled Shaft in Rock		Cu. Yd.	5	
Concrete Sealer		Sq. Ft.	817	
Geocomposite Wall Drain		Sq. Yd.	62	
Pipe Underdrain for Structures 4"		Foot	77	
Crosshole Sonic Logging		Each	1	

For details of Bar Splicers, see sheet S1-45.
* Length is height of spiral.