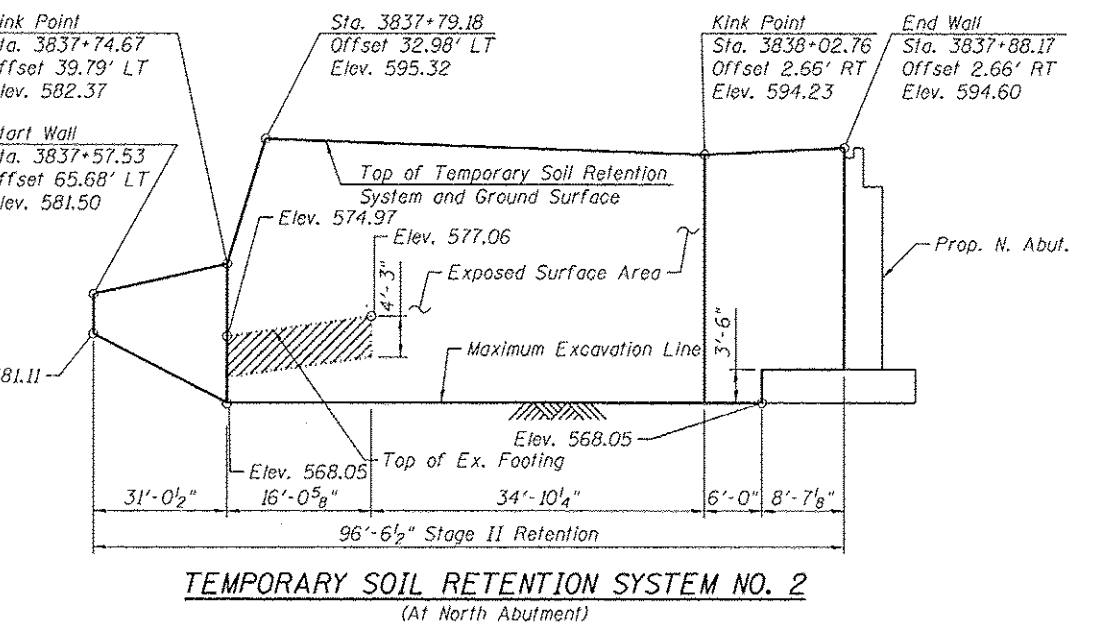
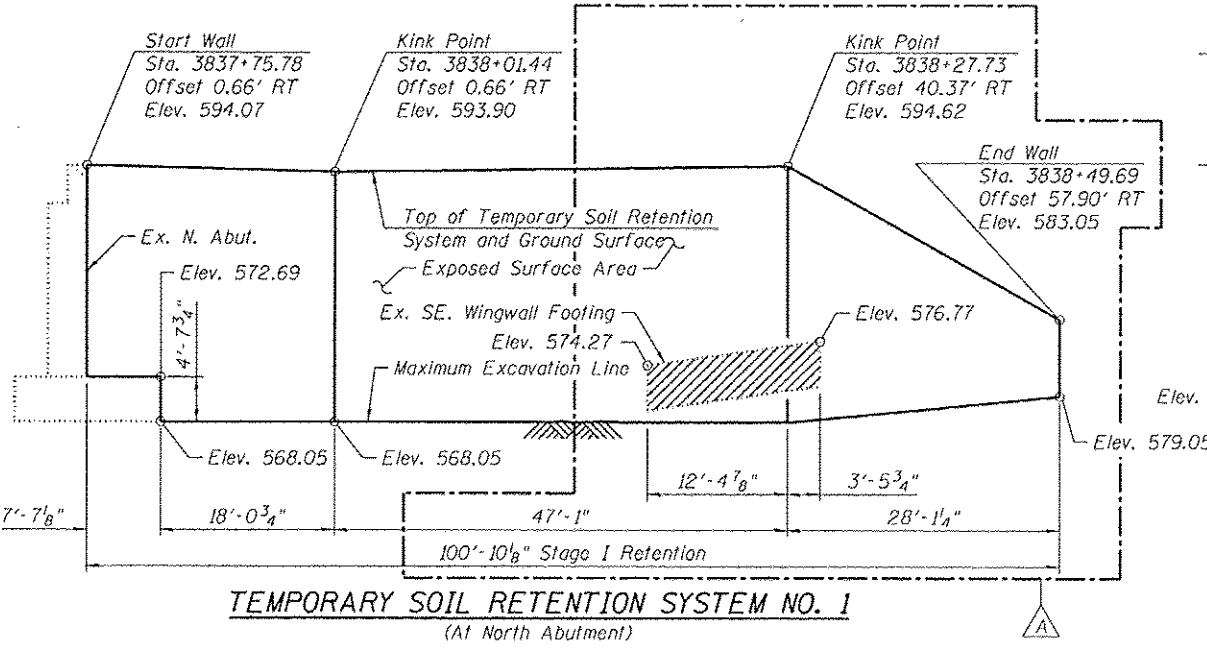


**FOUNDATION LAYOUT**

**LEGEND:**

- Combined Sewer
- Storm Sewer
- ITS Fiber Optic
- Water Line
- Soil Boring
- Bulkhead and area filled with grout

**Notes:**  
 Removal of existing structures shall be in accordance with Section 501 of the Standard Specifications. This item shall include complete removal of the concrete bridge rails, concrete deck and superstructure. This item also includes partial removal of the abutment wall and wingwall down to a minimum of 1'-0" below proposed finished grade or specified depth indicated on plans.  
 Driving piles and temporary sheet piling is not allowed. A cantilevered sheet piling design does not appear feasible and additional members or other retention systems may be necessary.  
 The Contractor shall submit a temporary soil retention system design including plan details and calculations for review and acceptance by the Engineer.  
 See the Utility Plan on sheet S2-03 of S2-81 for existing utilities. The maximum allowable excavation slope is 1:2 (V:H).  
 For additional Temporary Soil Retention System details see sheets S2-05 thru S2-07 of S2-81.  
 For Soil Retention System details see sheet S2-08 of S2-81.



**BILL OF MATERIAL**

Item	Unit	Quantity
Temporary Soil Retention System	Sq. Ft.	4246

12/11/04 PM 05:17:15 - 60W26-S004-SubStruct-Foundation.dgn



USER NAME = BAWitort	DESIGNED - JRM	REVISION 10/15/2013 KAH
PLOT SCALE = 20:0.0023 1" / 10'	CHECKED - MDS	REVISION
PLOT DATE = 10/14/2013	DRAWN - RLS	REVISION
	CHECKED - MDS	REVISION

STATE OF ILLINOIS  
DEPARTMENT OF TRANSPORTATION

FOUNDATION LAYOUT  
STRUCTURE NO. 016-1716

SHEET NO. S2-04 OF S2-81 SHEETS

F.A.U. RTE.	SECTION	COUNTY	TOTAL SHEETS	SHEET NO.
3730	2013-008R	COOK	559	364
CONTRACT NO. 60W26			ILLINOIS FED. AID PROJECT	