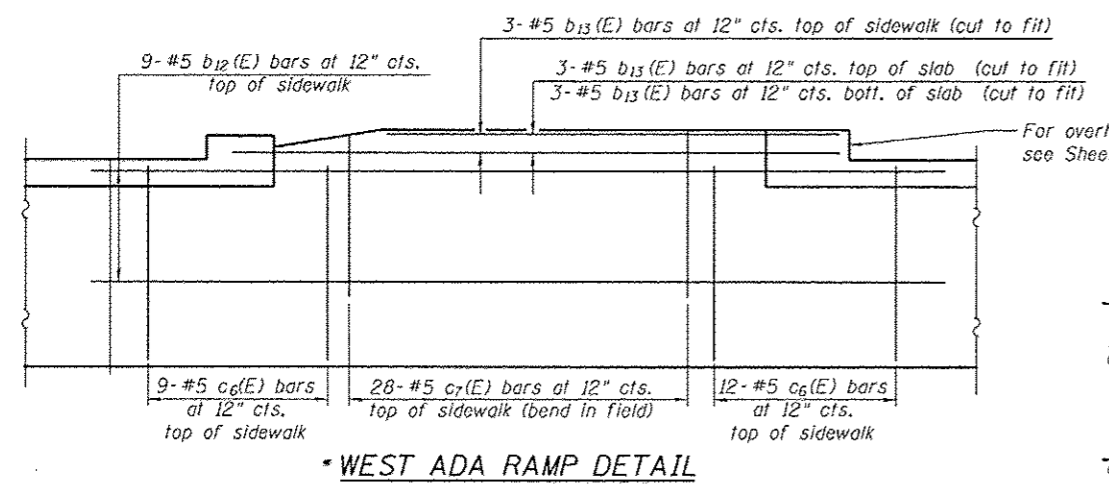


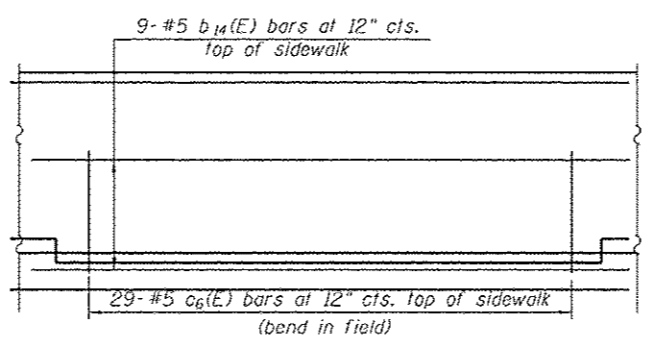
NEAR MIDSPAN

CROSS SECTION
(Looking North)

NEAR PIER

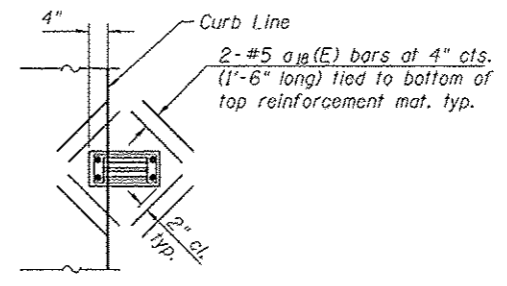


WEST ADA RAMP DETAIL



EAST ADA RAMP DETAIL

* See Roadway Plans for ADA Ramp slope and ADA Ramp layout



SCUPPER PLAN

Note:
Cut longitudinal reinforcement to clear drainage scuppers.

Notes:

See Sheet S2-30 of S2-81 for Bill of Material.
See Sheet S2-32 of S2-81 for parapet reinforcement.
For Scupper locations see Sheet S2-03 of S2-81.

Proposed conduit support system is shown for information only on sheets 441A thru 441C. The concrete inserts will be provided to the Contractor by ComEd. The Contractor is responsible for placing inserts per layout details and ComEd direction. ComEd may elect to provide support to Contractor for final insert placement in advance of pouring concrete. There is no separate payment for the placement of inserts. The work involved in placing inserts is included within Concrete Superstructure. The cost of expansion anchors/inserts at the east sidewalk is included in the cost of Reinforcement Bars, Epoxy Coated.

For ITS conduit layout, see ITS Plans.
For traffic signal conduit layout, see ATS Plans.

22/11/14 PM 0181116-60R26-S029-Deck_Section3.dgn



USER NAME = DAWitort	DESIGNED - DJG	REVISED	10/15/2013 WJC
	CHECKED - NVW	REVISED	
PLOT SCALE = 10:8.0000 1" / 8'	DRAWN - RLS	REVISED	
PLOT DATE = 10/14/2013	CHECKED - DJG/WJC	REVISED	

STATE OF ILLINOIS
DEPARTMENT OF TRANSPORTATION

DECK PLAN AND CROSS SECTION 3
STRUCTURE NO. 016-1716

SHEET NO. S2-29 OF S2-81 SHEETS

F.A.U. RTE.	SECTION	COUNTY	TOTAL SHEETS	SHEET NO.
3730	2013-00BR	COOK	559	389
CONTRACT NO.			60W26	
ILLINOIS FED. AID PROJECT				