

Bench Mark: Cut square on southwest parapet wall over I-90 on west end, ±2.5 A/G. Elevation 598.65.

Existing Structure: None.

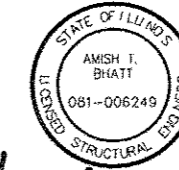
DESIGN SPECIFICATIONS
2012 AASHTO LRFD Bridge Design Specifications,
6th Edition with 2013 Interim Revisions

APPROVED
For Structural Adequacy Only

D. Carl Runey, P.E.
Engineer of Bridges & Structures

DESIGN STRESSES

FIELD UNITS
f'c = 3,500 psi
f'c = 7,000 psi (Drilled Shaft - see Gen. Note 7)
fy = 60,000 psi (Reinforcement)



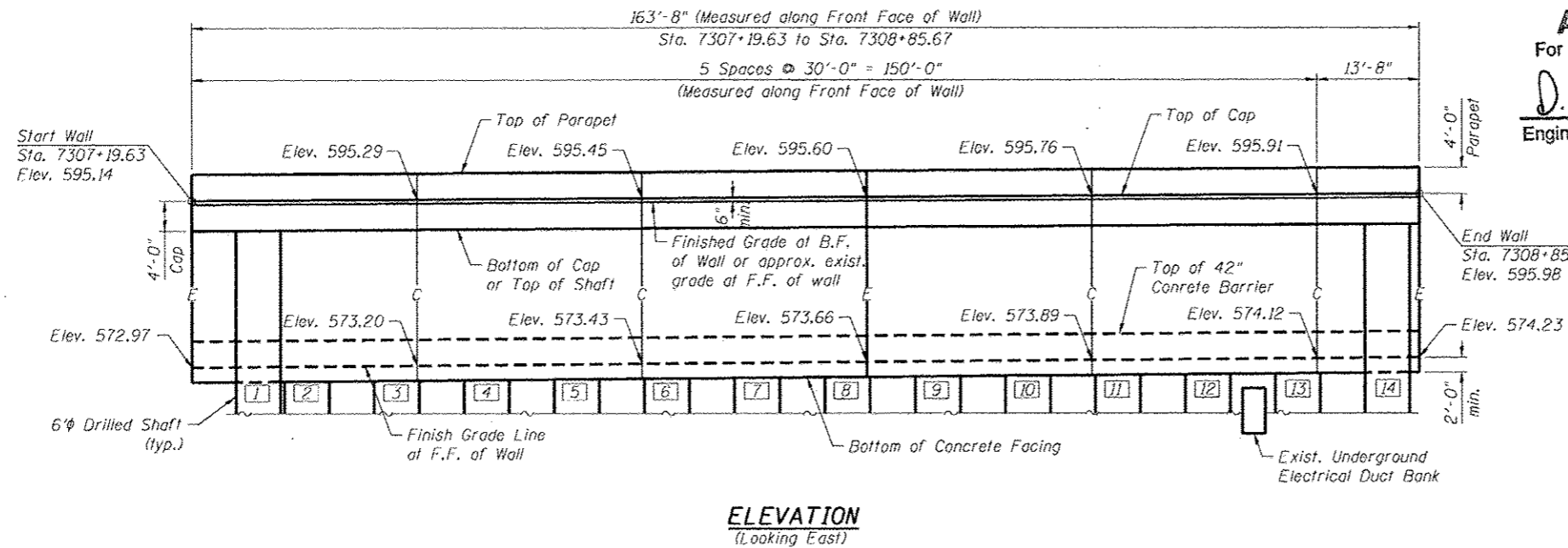
Amish T. Bhatt
AMISH T. BHATT
LICENSE EXPIRES 11/30/2014

LEGEND:

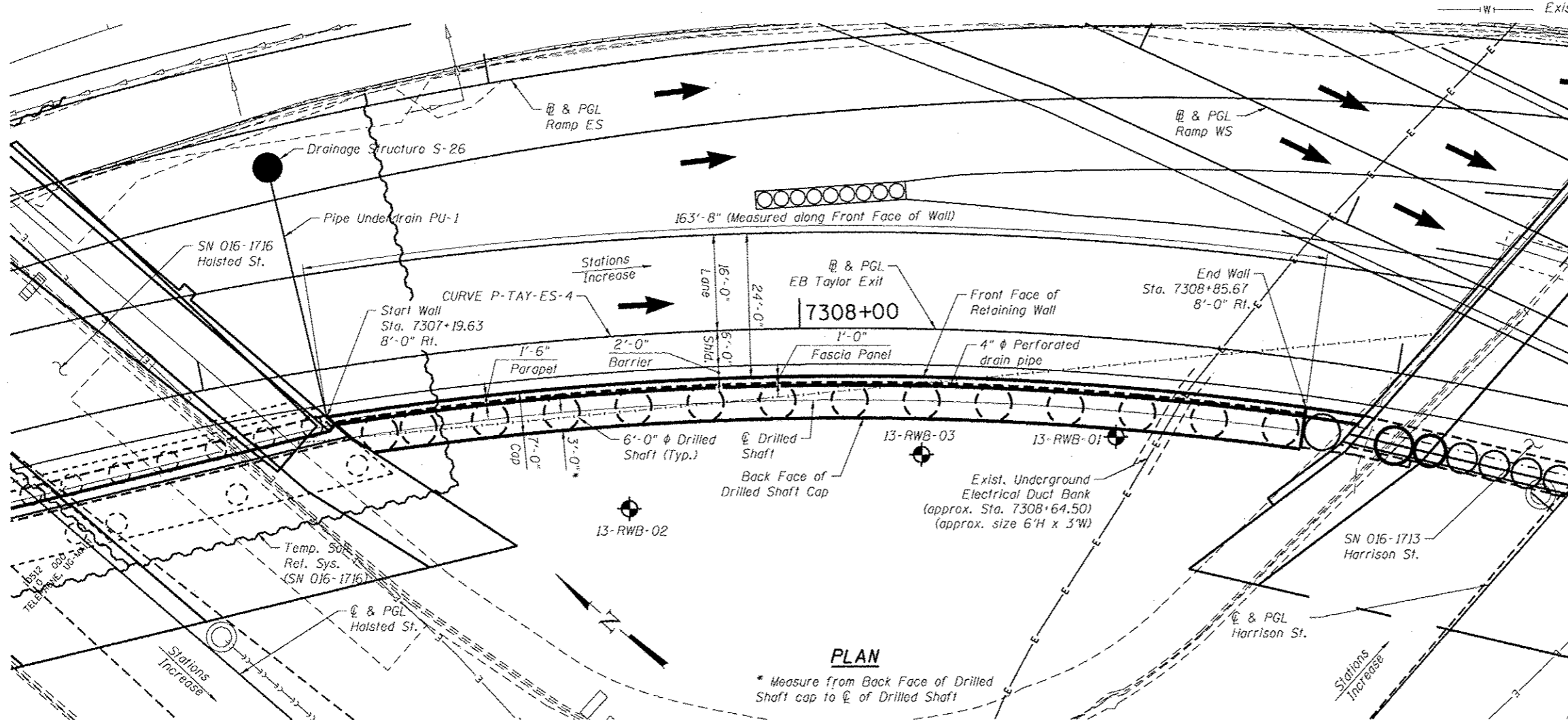
- C = Construction Joint
- E = Expansion Joint
- F.F. = Front Face
- B.F. = Back Face
- [] = Drilled Shaft Number
- [] = Soil Boring Locations
- [] = Exist. Underground Electric
- [] = Exist. Underground Water

CURVE DATA

(EB Taylor Exit)
Prop. Curve P-TAY-ES-4
P.I. Sta. = 7309+22.03
Δ = 43° 22' 59" (RT)
D = 10° 13' 53"
R = 560.00'
T = 222.76'
L = 424.02'
E = 42.68'
e = 5.8%
T.R. = NA
S.E. Run = 150'
P.C. Sta. = 7306+99.28
P.T. Sta. = 7311+23.30

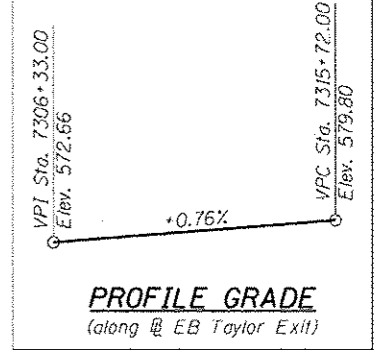


ELEVATION
(Looking East)



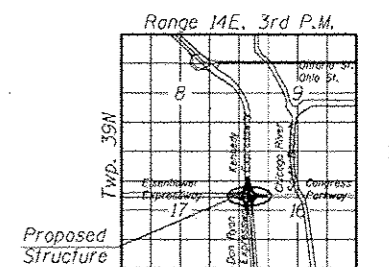
PLAN

* Measure from Back Face of Drilled Shaft cap to C of Drilled Shaft



PROFILE GRADE
(along EB Taylor Exit)

For Information Only
Part of Future Contract



LOCATION SKETCH

GENERAL PLAN & ELEVATION
F.A.I. RTE. SB 90/94
(DAN RYAN EXPRESSWAY)
F.A.I. RTE. 90/94 - SECTION 2013-008R
COOK COUNTY
STATION 7307+19.63 TO STATION 7308+85.67
STRUCTURE NO. 016-1802

Entire Sheet Revised



USER NAME = dunkerloyb
DESIGNED - DD
CHECKED - ATB
DRAWN - BRD
CHECKED - ATB
PLOT SCALE = N.T.S.
PLOT DATE = 9/15/2013

DESIGNED - DD
CHECKED - ATB
DRAWN - BRD
CHECKED - ATB

REVISIONS
10/15/2013 A.T.B.
REVISIONS
REVISIONS

STATE OF ILLINOIS
DEPARTMENT OF TRANSPORTATION

GENERAL PLAN AND ELEVATION
STRUCTURE NO. 016-1802

SHEET NO. RW-01 OF RW-08 SHEETS

F.A.I. RTE.	SECTION	COUNTY	TOTAL SHEETS	SHEET NO.
90/94/290	2013-008R	COOK	559	453
CONTRACT NO.			60W26	
ILLINOIS FED. AID PROJECT				

0161802-60W26-SCI-CPE