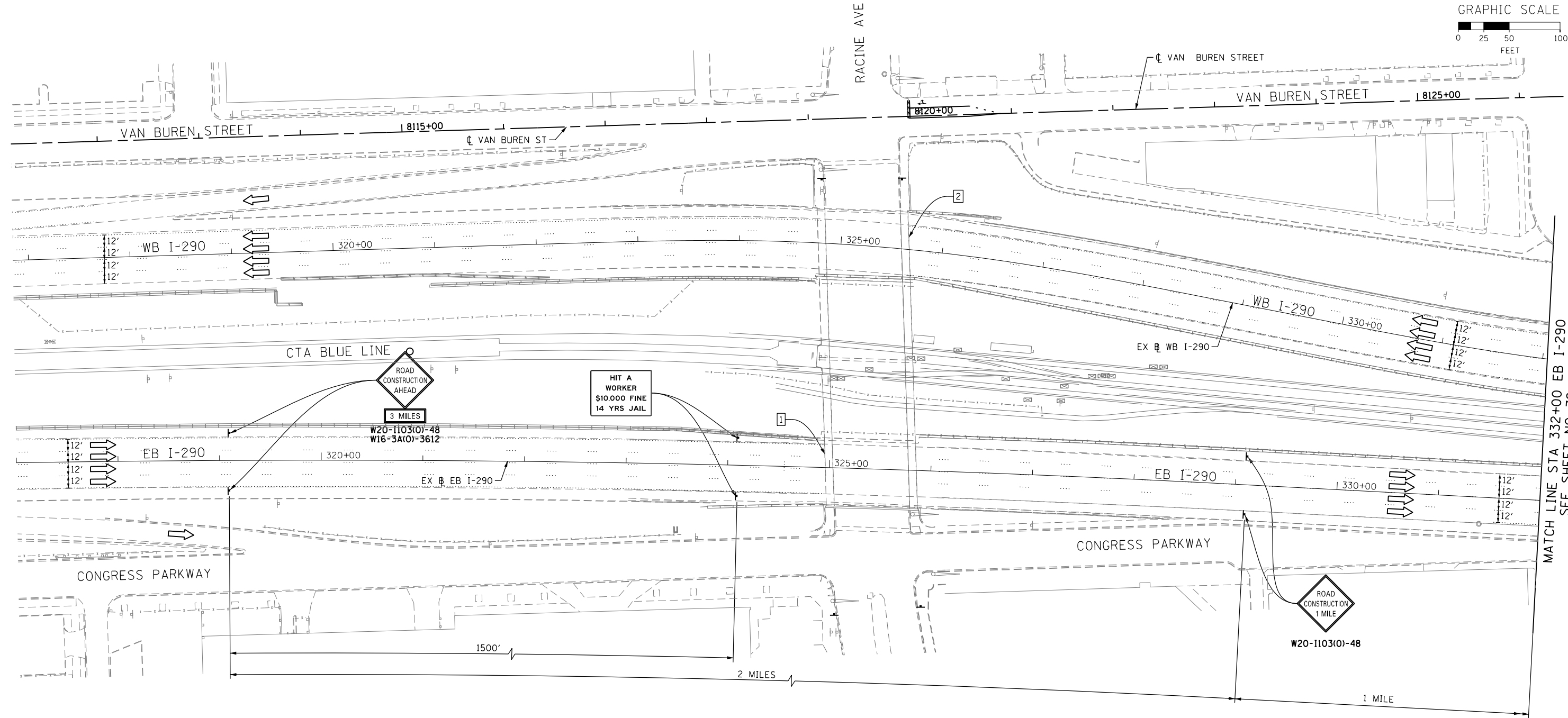
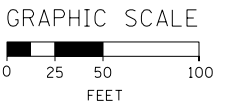


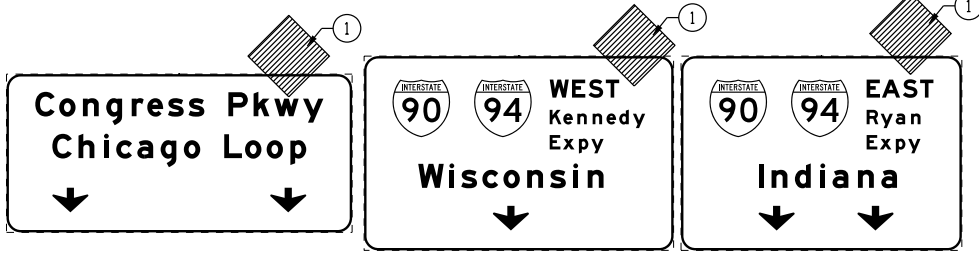
NOTE:

- UNLESS NOTED OTHERWISE, ALL STATIONS AND OFFSETS USED ARE TAKEN FROM EXISTING EB AND WB I-290 BASELINES.
- FOR LEGEND SEE SHEET NO. 65

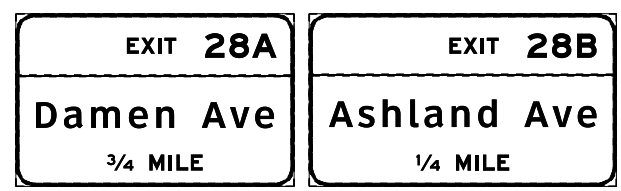


MATCH LINE STA 332+00 EB I-290
SEE SHEET NO. 72

1 EXISTING OVERHEAD SIGNS TO REMAIN



2 EXISTING OVERHEAD SIGNS TO REMAIN



D160W26-Sht-StagingIA-ML-01
USER NAME = pimsarno
PLOT SCALE = 50.0000' / in.
PLOT DATE = 9/15/2013

DESIGNED - OPS	REVISED -
DRAWN - PHP	REVISED -
CHECKED - DBM	REVISED -
DATE - 9/15/13	REVISED -

STATE OF ILLINOIS
DEPARTMENT OF TRANSPORTATION

SUGGESTED STAGES OF CONSTRUCTION AND TRAFFIC CONTROL PLAN
MAINLINE STAGING 1A
SCALE: 1" = 50' SHEET 1 OF 8 SHEETS STA. TO STA.

F.A.I. RTE. 90/94/290	SECTION 2013-008R	COUNTY COOK	TOTAL SHEETS 559	SHEET NO. 71
CONTRACT NO. 60W26			ILLINOIS FED. AID PROJECT	

FILE PATH = p:\388035-p\m\l\escom\line\local\p\w\ec\0\0\Documents\01_Americas\Transportation\60269938_Circle\Phase_1\1000_CAD\006_Roadway\Sheets\60W26-Sht-StagingIA-ML-01