

INSTALL PROPOSED STORM SEWER FROM EXISTING STRUCTURE TO FACE OF BARRIER WALL DURING TEMPORARY LANE CLOSURE IN STAGE 1. PATCHING IS TO BE PAID FOR AS TEMPORARY PAVEMENT.

COMB SEW ESVCP 8 CDOT (INSTALL PRE-STAGE 1, REMOVE IN STAGE 2)

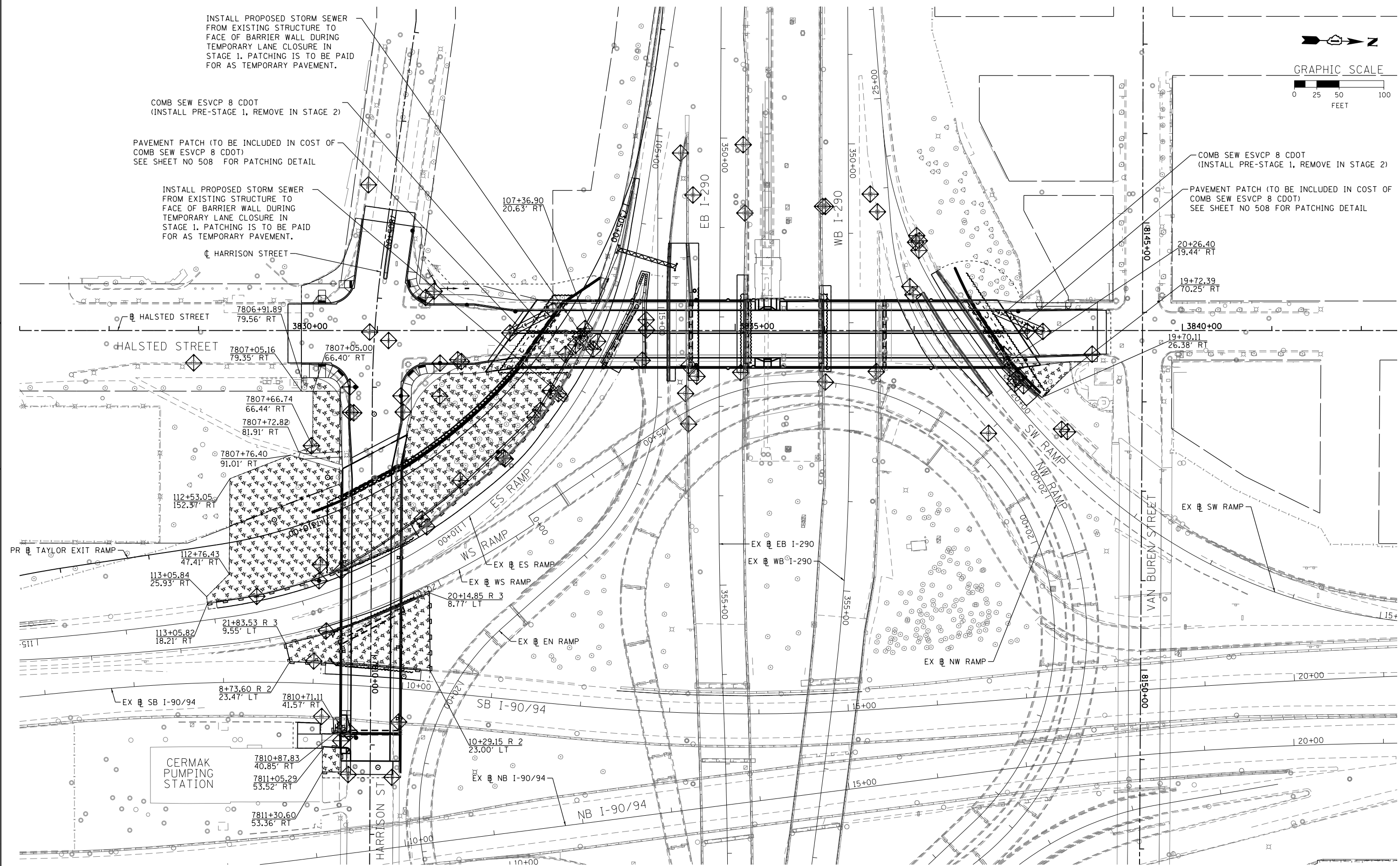
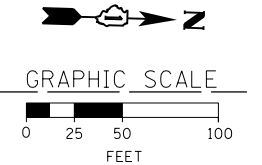
PAVEMENT PATCH (TO BE INCLUDED IN COST OF COMB SEW ESVCP 8 CDOT) SEE SHEET NO 508 FOR PATCHING DETAIL

INSTALL PROPOSED STORM SEWER FROM EXISTING STRUCTURE TO FACE OF BARRIER WALL DURING TEMPORARY LANE CLOSURE IN STAGE 1. PATCHING IS TO BE PAID FOR AS TEMPORARY PAVEMENT.

HARRISON STREET

COMB SEW ESVCP 8 CDOT (INSTALL PRE-STAGE 1, REMOVE IN STAGE 2)

PAVEMENT PATCH (TO BE INCLUDED IN COST OF COMB SEW ESVCP 8 CDOT) SEE SHEET NO 508 FOR PATCHING DETAIL



FILE PATH = p:\388035-par\1\escomon\me\local\p\AEC\000\Documents\01_Americas\Transportation\60269938_Circle Phase 1\000_CAD\005_Roadway_Sheets\60W26-Contract\0160W26-sht-Eros-Stage-01A



D160W26-sht-Eros-Stage-01A
 USER NAME = chiuA
 PLOT SCALE = 50.0000' / in.
 PLOT DATE = 9/11/2013

DESIGNED - AFC	REVISED -
DRAWN - AFC	REVISED -
CHECKED - DBM	REVISED -
DATE - 9/15/13	REVISED -

**STATE OF ILLINOIS
 DEPARTMENT OF TRANSPORTATION**

**EROSION AND SEDIMENTATION CONTROL PLAN
 STAGE 1A**

SCALE: 1"=50' SHEET 1 OF 5 SHEETS STA. TO STA.

F.A.I. RTE. 90/94/290	SECTION 2013-008R	COUNTY COOK	TOTAL SHEETS 559	SHEET NO. 124
CONTRACT NO. 60W26				
ILLINOIS FED. AID PROJECT				