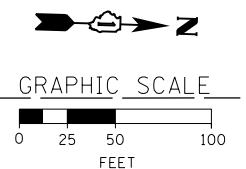
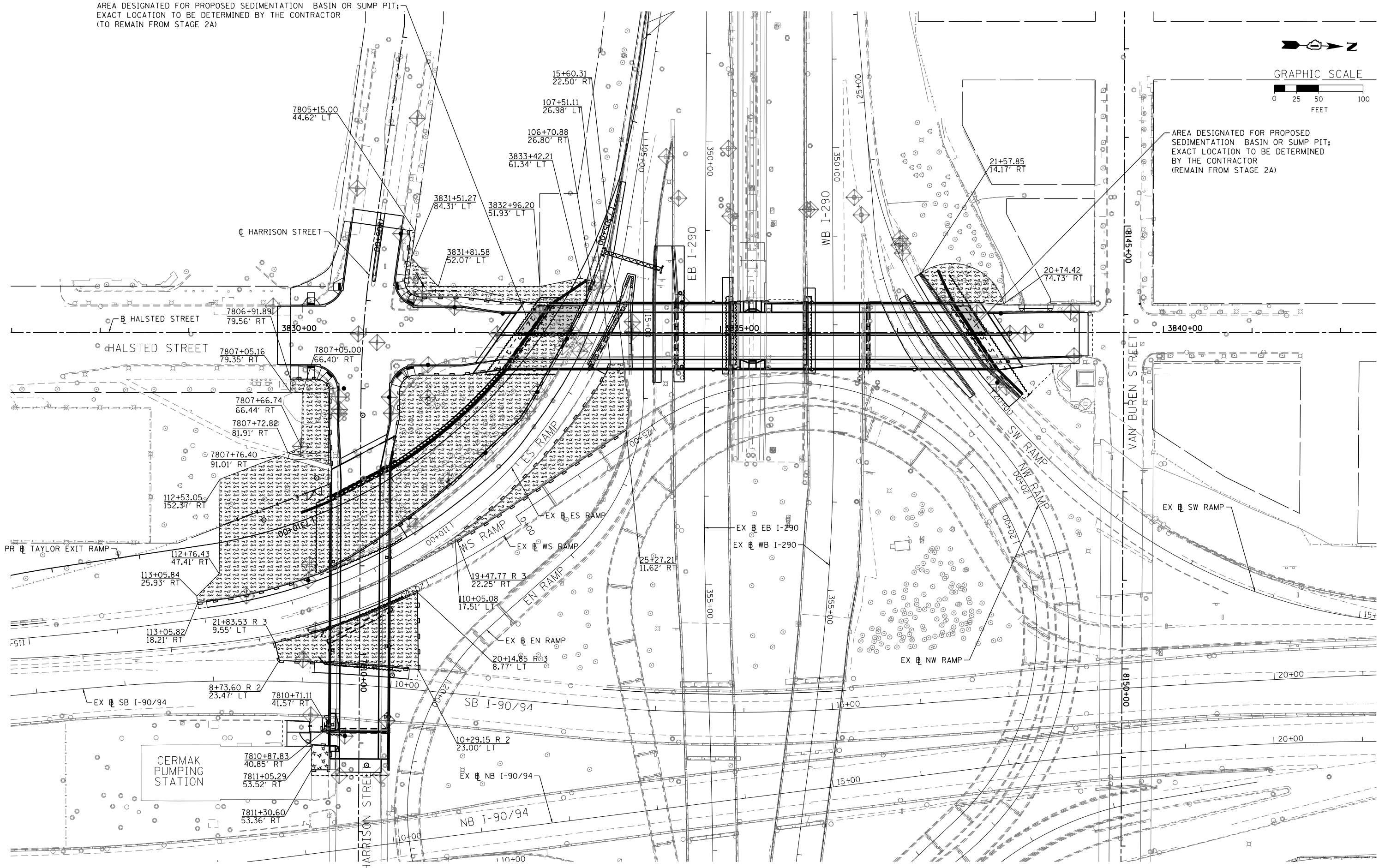


AREA DESIGNATED FOR PROPOSED SEDIMENTATION BASIN OR SUMP PIT;
EXACT LOCATION TO BE DETERMINED BY THE CONTRACTOR
(TO REMAIN FROM STAGE 2A)



AREA DESIGNATED FOR PROPOSED
SEDIMENTATION BASIN OR SUMP PIT;
EXACT LOCATION TO BE DETERMINED
BY THE CONTRACTOR
(REMAIN FROM STAGE 2A)

FILE PATH = p:\388035-par\1\escom\1\local\p\AEC\000\Documents\01_Americas\Transportation\60269938_Circle\Phase\1\000_CAD\005_Roadway\Sheets\60W26-sh1-Eros-Stage-02B



D160W26-sh1-Eros-Stage-02B
USER NAME = chiu
PLOT SCALE = 50.0000' / in.
PLOT DATE = 9/15/2013

DESIGNED - AFC	REVISED -
DRAWN - AFC	REVISED -
CHECKED - DBM	REVISED -
DATE - 9/15/13	REVISED -

**STATE OF ILLINOIS
DEPARTMENT OF TRANSPORTATION**

**EROSION AND SEDIMENTATION CONTROL PLAN
STAGE 2B**

SCALE: 1"=50' SHEET 4 OF 5 SHEETS STA. TO STA.

F.A.I. RTE. 90/94/290	SECTION 2013-008R	COUNTY COOK	TOTAL SHEETS 559	SHEET NO. 127
CONTRACT NO. 60W26			ILLINOIS FED. AID PROJECT	