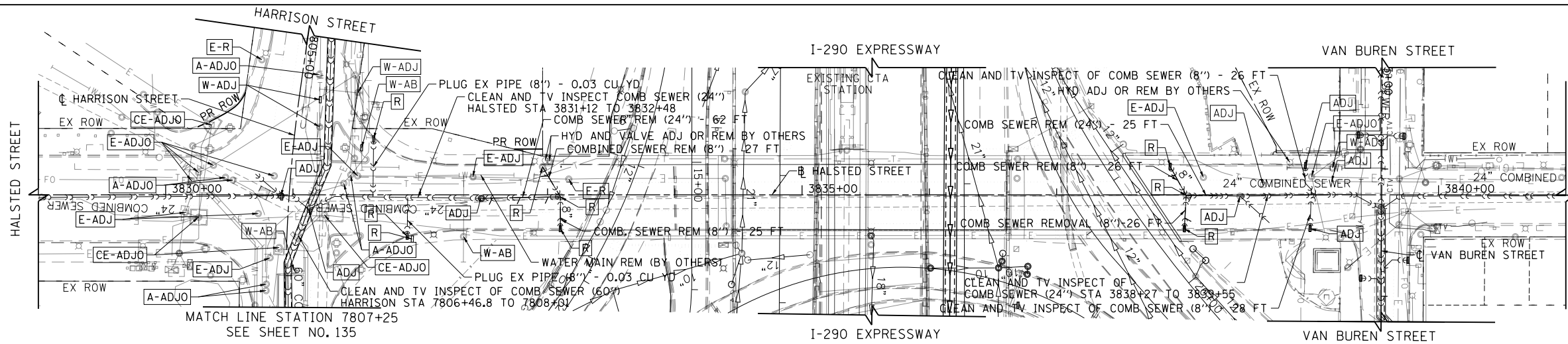


DATE	
BY	
FILE	
PLANNING	
DESIGN	
CONSTRUCTION	
AS-BUILT	

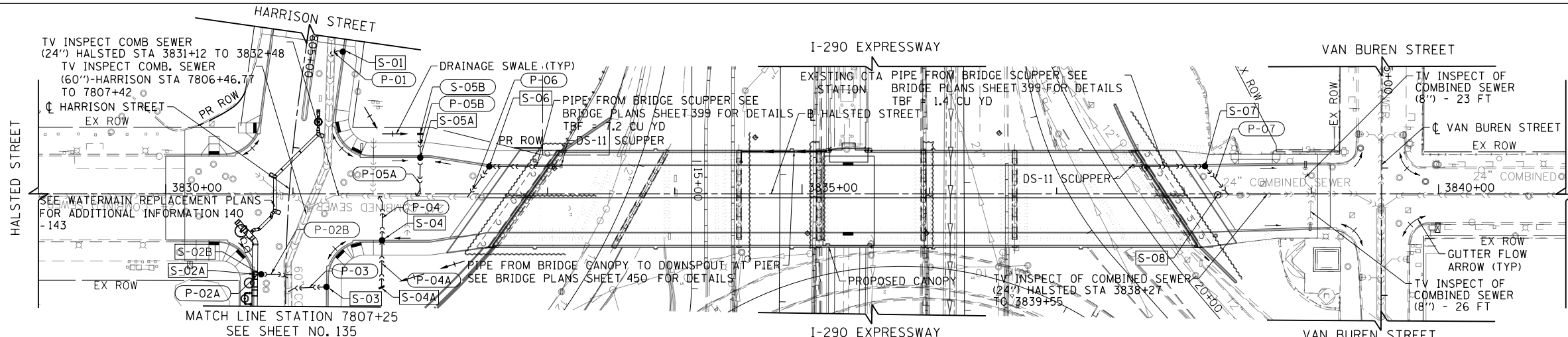
DATE	
BY	
PROFILE	
GRADES	
STRUCTURE	
NOTATIONS	
CHKD	

FILE PATH = p:\388039-pant\escomon\me\local\p\AECD000\Documents\01_Americas\Transportation\62629938_Circle\Phase 1\000_CAD\006_Roadway\Sheets\60W26-Sht-D-01.dgn



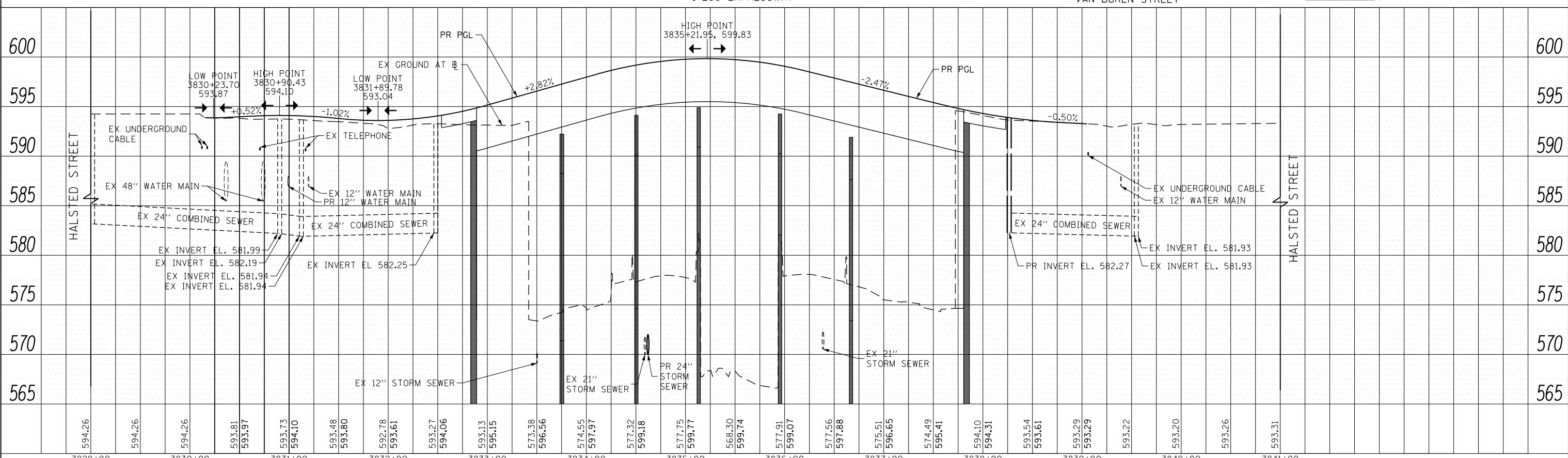
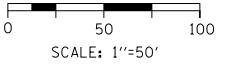
- ### ADJUSTMENT AND REMOVAL LEGEND
- A-ADJO ATT ADJUST BY OTHERS
 - CE-ADJO COMED ADJUST BY OTHERS
 - E-ADJ CITY ELECTRIC ADJUST
 - E-R CITY ELECTRIC REMOVE
 - W-ADJ CITY WATER ADJUST
 - W-AB CITY WATER ABANDON
 - ADJ ADJUST BY CONTRACTOR
 - R REMOVAL BY CONTRACTOR

EXISTING



- ### NOTES:
- REFER TO DRAWINGS 38 TO 43 FOR DRAINAGE STRUCTURE AND PIPE SCHEDULES.
 - SEE SHEET 131 TO 134 FOR I-290 DRAINAGE AND REMOVALS.
 - SEE STRUCTURAL SHEETS FOR DS-11 SCUPPER DETAILS.

PROPOSED



		D160W26-Sht-Drain-01.dgn USER NAME = jslavanne PLOT SCALE = 50.0000' / in. PLOT DATE = 9/13/2013	DESIGNED - JSL DRAWN - BAW CHECKED - JWC DATE - 9/15/13	REVISED - REVISED - REVISED - REVISED -	STATE OF ILLINOIS DEPARTMENT OF TRANSPORTATION		DRAINAGE AND UTILITY PLAN AND PROFILE HALSTED STREET		F.A.I. R.E. = 90/94/290 SECTION = 2013-008R COUNTY = COOK ILLINOIS FED. AID PROJECT	TOTAL SHEETS = 559 SHEET NO. = 130 CONTRACT NO. = 60W26
SCALE: 1"=50' SHEET 1 OF 10 SHEETS STA. 3829+00 TO STA. 3841+00										