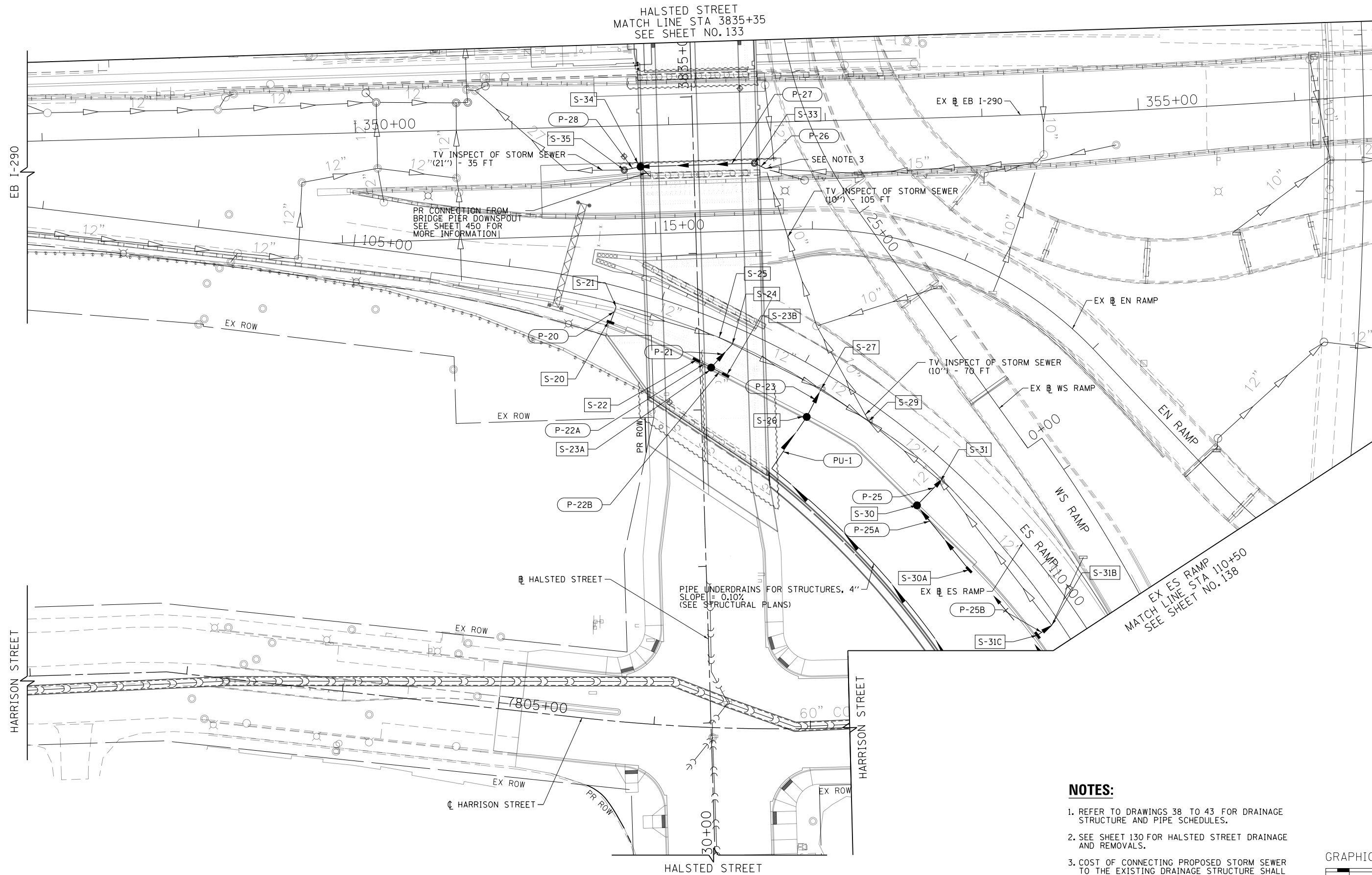


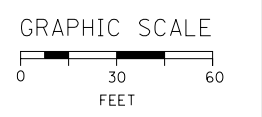


HALSTED STREET  
MATCH LINE STA 3835+35  
SEE SHEET NO. 133



**NOTES:**

1. REFER TO DRAWINGS 38 TO 43 FOR DRAINAGE STRUCTURE AND PIPE SCHEDULES.
2. SEE SHEET 130 FOR HALSTED STREET DRAINAGE AND REMOVALS.
3. COST OF CONNECTING PROPOSED STORM SEWER TO THE EXISTING DRAINAGE STRUCTURE SHALL BE INCLUDED IN THE COST OF THE PROPOSED STORM SEWER.



FILE PATH = p:\388035\p\m\l\esc\mon\me\local\p\w\ec\00\Documents\01\_Americas\Transportation\60269938\_Circle\Phase\_1\1000\_CAD\006\_Roadway\Sheets\60W26-Sht-Drain-05.DGN



D160W26-Sht-Drain-05.DGN  
USER NAME = jslavanne  
PLOT SCALE = 30.0000' / in.  
PLOT DATE = 9/13/2013

DESIGNED - JSL	REVISED -
DRAWN - BAW	REVISED -
CHECKED - JWC	REVISED -
DATE - 9/15/13	REVISED -

**STATE OF ILLINOIS  
DEPARTMENT OF TRANSPORTATION**

**DRAINAGE PLAN  
I-290**

SCALE: 1"=30' SHEET 5 OF 10 SHEETS STA. TO STA.

F.A.I. RTE.	SECTION	COUNTY	TOTAL SHEETS	SHEET NO.
90/94/290	2013-008R	COOK	559	134
CONTRACT NO. 60W26				
ILLINOIS FED. AID PROJECT				