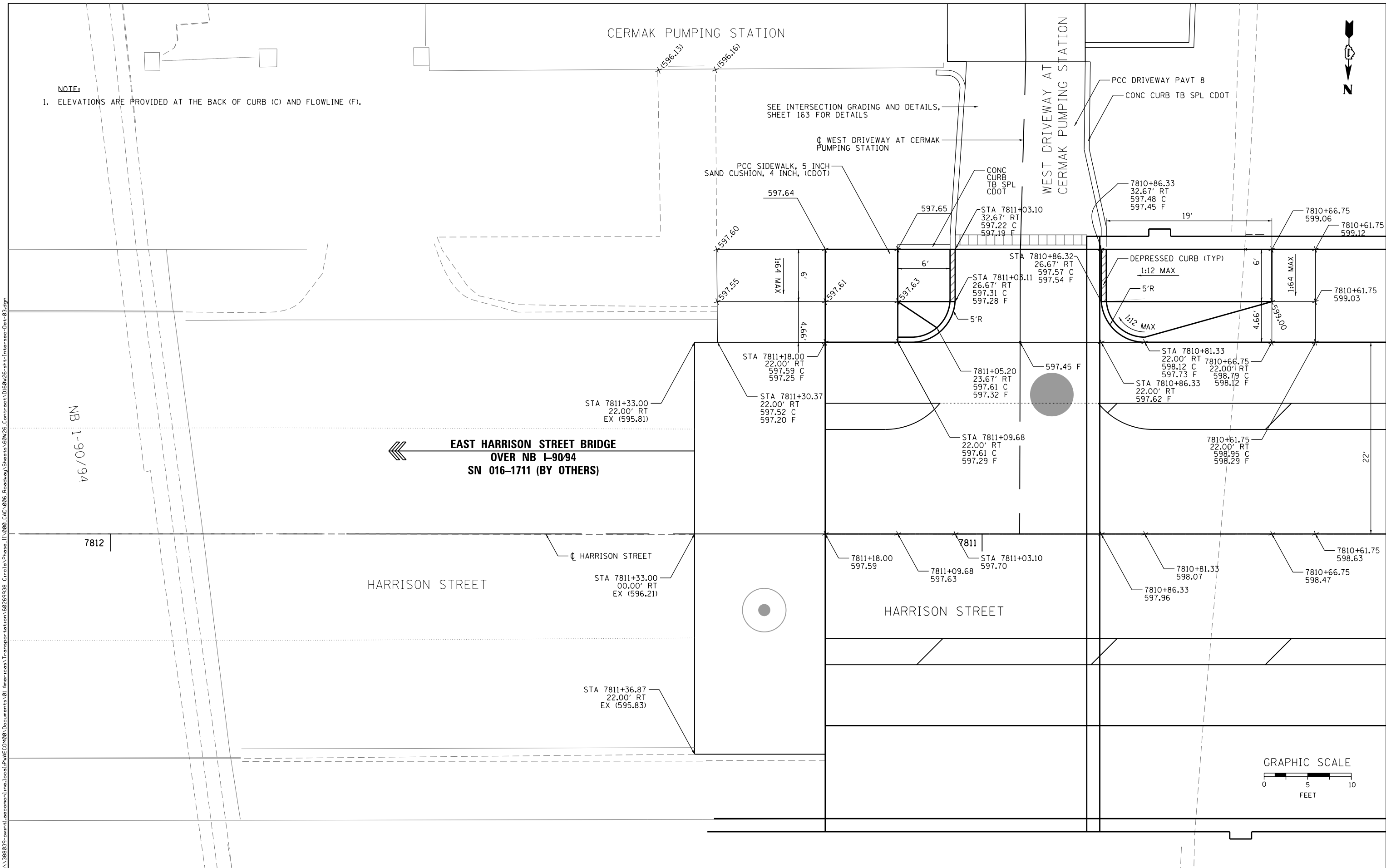




**NOTE:**  
1. ELEVATIONS ARE PROVIDED AT THE BACK OF CURB (C) AND FLOWLINE (F).

CERMAK PUMPING STATION

WEST DRIVEWAY AT CERMAK PUMPING STATION



FILE PATH = p:\388035\pmt\aecon\line\local\p\AECOM\0\Documents\01\_Americas\Transportation\6269938\_Circle\Phase\I\000\_CAD\006\_Roadway\Sheets\60W26\_sht-Intersec-Det-03.dgn



D160W26-sht-Intersec-Det-03.dgn  
 USER NAME = auyeungh  
 PLOT SCALE = 5.0000' / 1" / in.  
 PLOT DATE = 8/18/2013

DESIGNED - JWM	REVISED -
DRAWN - JWM	REVISED -
CHECKED - DBM	REVISED -
DATE - 8/20/13	REVISED -

STATE OF ILLINOIS  
DEPARTMENT OF TRANSPORTATION

<b>CURB RAMP DETAILS</b>			
<b>WEST DRIVEWAY AT CERMAK PUMPING STATION</b>			
SCALE: 1" = 5'	SHEET 3	OF 3 SHEETS	STA. TO STA.

F.A.I. RTE.	SECTION	COUNTY	TOTAL SHEETS	SHEET NO.
90/94/290	2013-008R	COOK	559	166
CONTRACT NO. 60W26				
ILLINOIS FED. AID PROJECT				